



STUDIO APARTMENT, 5020 SALZBURG

Renovated apartment in the heart of Salzburg (21)

Object number: FEFE1

[View and rent online](#)

Period	20/12/2025 - 20/01/2026
Number of persons	2
Total incl. VAT.	€ 1.308,69
Security deposit	€ 1.000,00

A newly renovated and beautiful apartment awaits you in the heart of Salzburg. Best suited for two people, it can also be used by three people with a sofa bed.



Living space

25m²



Maximum occupancy

3 Persons



Complete accommodation [?]

1 Private bathroom 1 Living-Sleepingroom



2. floor



Check-in

15:00 - 23:59 Clock



Check-out

08:00 - 12:00 Clock

Sleeping options

Living and sleeping



1x Double bed (1,80 m x 2 m)



1x Sofa bed (1 person)

Description of accommodation

The apartment is located in the city centre surrounded by restaurants, bars and a full spectrum of museums. You are very central but you will be not disturbed by the outside volume. Just a little walk away you can find cultural sights, the festival house, university and a lot of shops.

Equipment & Features



Basic equipment

- Internet/Wifi
- Community washing machine
- Bedclothes
- Private toilet
- TV
- Community dryer
- Towels
- Hairdryer



First supply

- Toilet paper
- Nespresso capsules
- Soap



Kitchen

- Private kitchen
- Glasses/Tableware
- Dishwasher
- Cooking utensils
- Espresso machine

Informations

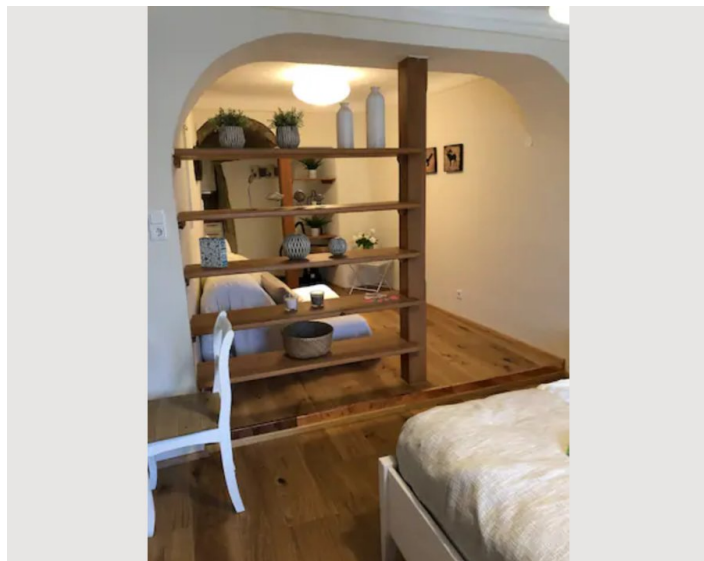
- Suitable for construction workers
- Smoking not allowed
- Pets forbidden
- Suitable for children
- Short-term parking zone subject to a charge
- Regular cleaning at extra cost

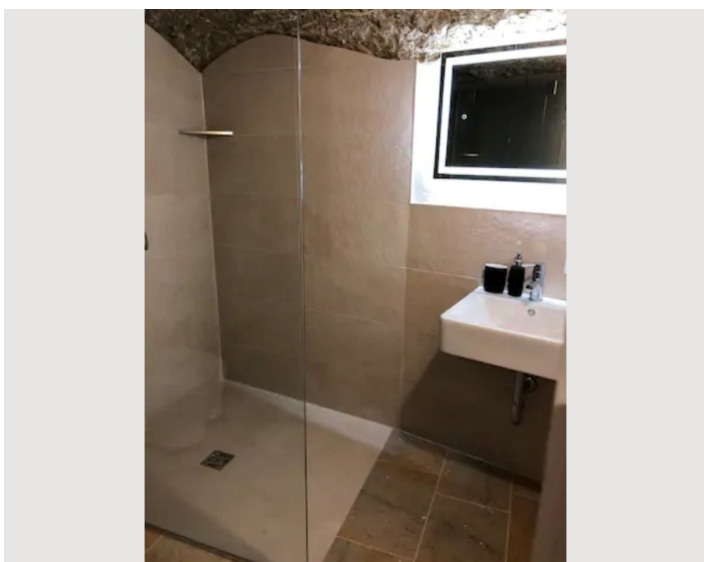
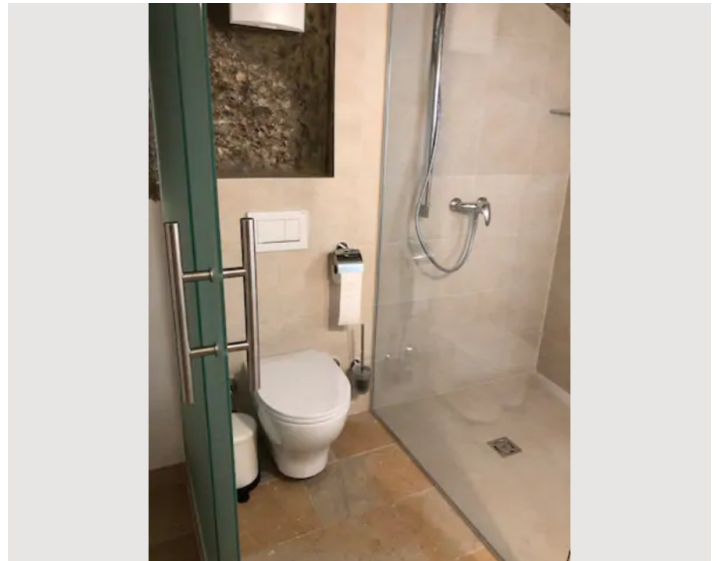
Additional services

- Weekly linen and towel service (€ 20,00)

All prices are gross per month - billing is done directly with the lessor.

Picture gallery





Infrastructure



The "Mönchsbergaufzug" bus stop is right outside the front door, other central bus stops are just a few minutes' walk away.



Just a few minutes' walk.



A 20-minute walk away.



Just a few minutes' walk.

All major amenities are in the immediate vicinity. Grocery stores < 500 m, cafes/bars/restaurants < 100 m, bakery < 50 m, pharmacy < 1 km.

Bus stops in various directions are in the immediate vicinity. If you are traveling from the main train station, take bus no. 1 towards the center and get off at the "Mönchsbergaufzug" stop. This is located directly in front of the building entrance.

In 100 meters you are directly at the Salzach and can take a long walk from there with a perfect view of the city.

Location

