



2 ROOM APARTMENT, 1120 VIENNA

Apartment Philadelphia ORANGE

Object number: LAUN4

[View and rent online](#)

Period	12/01/ - 12/02/2026
Number of persons	2
Total incl. VAT.	€ 2.664,32
Security deposit	€ 2.000,00

Apartment location very calm, despite perfect connection to public transportation. A flat for families or 2 colleagues who want separate rooms



Living space

88m²



Maximum occupancy

4 Persons



Complete accommodation [?]

1 Private bathroom 2 Separated bedrooms



3. floor

Elevator available



Check-in

16:00 - 18:00 Clock



Check-out

07:00 - 10:00 Clock

Sleeping options

Bedroom 1



1x Double bed (1,80 m x 2 m)

Bedroom 2



2x Single bed

Descripton of accommodation

The flat has a spacious anteroom with large cupboards and a working desk, a comfortable kitchen with all things you may need, also dining table, a toilet separated from bath (shower) and two large rooms, both with beds and seatings. All rooms accessible separately.

Equipment & Features



Basic equipment

- Internet/Wifi
- Community washing machine
- Bedclothes
- Private toilet
- Vacuum cleaner
- Cleaning utensils
- TV
- Community dryer
- Towels
- Garage
- Iron & ironing board
- Hairdryer



First supply

- Toilet paper
- Soap
- Fridge filling on request
- shampoo
- Nespresso capsules



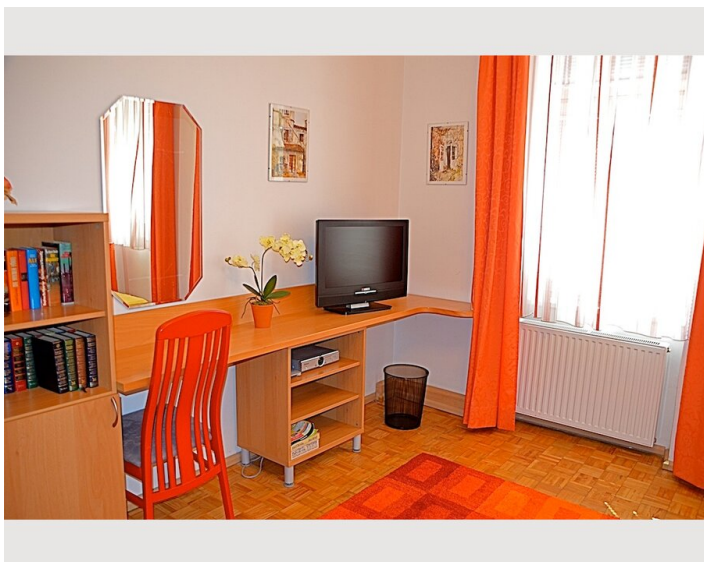
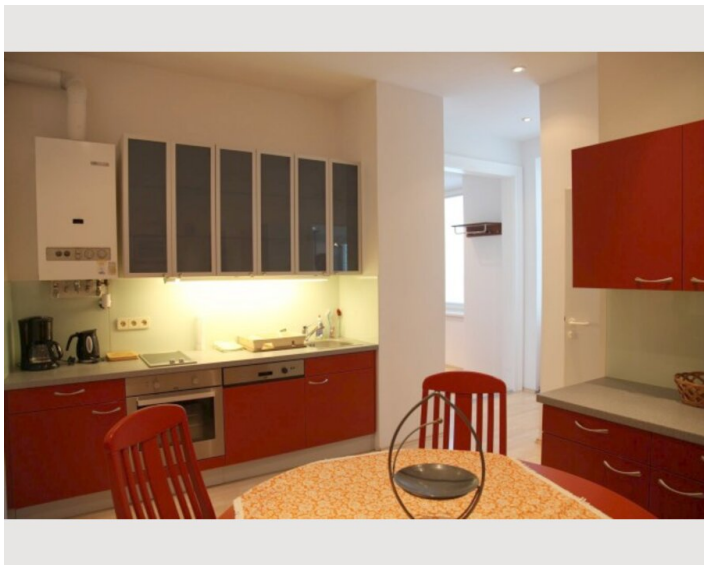
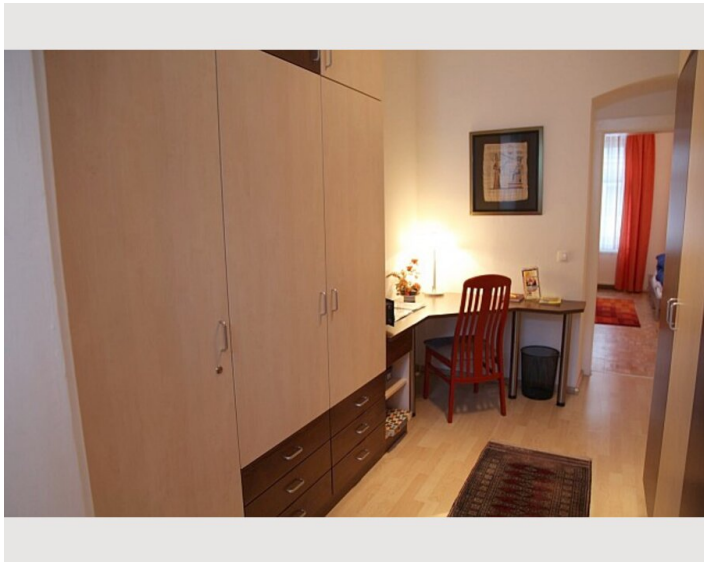
Kitchen

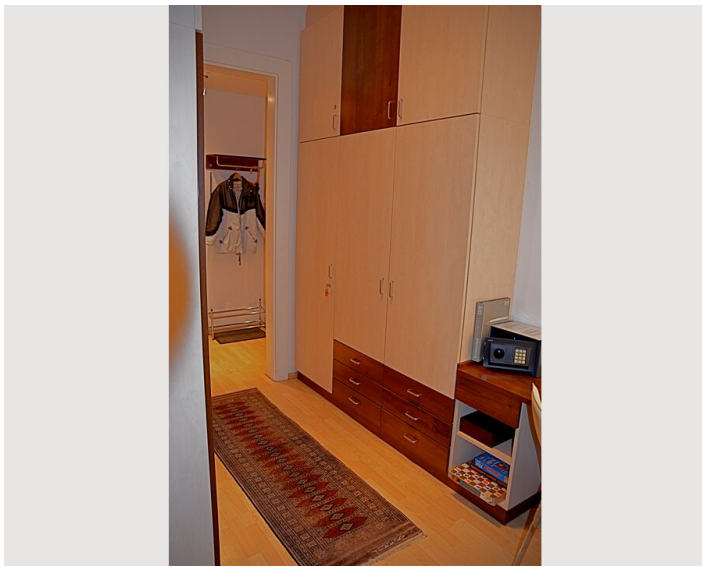
- Private kitchen
- Glasses/Tableware
- Filter coffee
- Microwave
- Cooking utensils
- Espresso machine
- Dishwasher

Informations






- Suitable for children
- Short-term parking zone subject to a charge
- Private entrance
- Regular cleaning at extra cost
- Smoking not allowed
- Desk/Workplace
- Pets on request
- Bicycle room free of charge

Picture gallery





Infrastructure

- | | |
|---|--|
|  2 minutes walking distance |  approx. 20km distance, taxi or train to station "Bahnhof Meidling" |
|  also tube station, walking distance 5-10 minutes |  about 5 min. walking |
|  15-20 minutes with bus, tram or underground | |

Within about 5-10 minutes you are in a pedestrian shopping street. There you have all shops (supermarkets, pharmacies, banks, coffeeshops, bakeries, ...). Also you have bus, tram, underground, trains reachable within a few minutes walking. Although our apartment is located in a small, calm side street the access to public transportation is perfect.

Location

