



2 ROOM APARTMENT, 8990 BAD AUSSEE

Spacious apartment in beautiful Salzkammergut

Object number: SQSE1

[View and rent online](#)

Large, cosy flat on a farm in a quiet south-facing location, furnished in a traditional, rural style. The 78 m² flat offers high-quality furnishings, with a direct view of green meadows and the Dachstein glacier.

Period	02/05/ - 02/06/2026
Number of persons	2
Total incl. VAT.	€ 2.200,55
Security deposit	€ 1.600,00



Living space

78m²



Maximum occupancy

2 Persons



Complete accommodation [?]

1 Private bathroom 1 Separated bedroom 1 Living-Sleepingroom



Ground floor



Check-in

15:00 - 19:00 Clock



Check-out

08:00 - 10:00 Clock

Sleeping options

Sleeping room



1x Double bed (1,80 m x 2 m)

Living & Sleeping



2x Sofa bed (1 person)

Descripton of accommodation

Sleeping

The very large bedroom has a comfortable four-poster bed and a spacious desk. The room offers an unobstructed view of the Dachstein glacier and the surrounding meadows and forests.

Living room

The living room has an L-shaped couch with two single beds integrated into it - ideal for overnight guests. There is also a flat-screen TV. The adjoining conservatory has a cosy coffee corner, a small desk and offers a sweeping view of the surrounding countryside.

Dining

The separate kitchen is fully equipped with dishwasher, large fridge with freezer compartment, oven, filter coffee machine, pad coffee machine, toaster, blender and hand blender. A dining table provides space for meals.

Bathroom & WC

The large bathroom has a WC and plenty of space. There is a spacious wardrobe with plenty of storage space in the anteroom.

Shared use

There is a communal garden with seating and deckchairs. There is also a washing machine, tumble dryer, iron and ironing board for communal use.

Equipment & Features



Basic equipment

- Winter garden
- Internet/Wifi
- Community washing machine
- Bedclothes
- Private toilet
- Vacuum cleaner
- Hairdryer
- Garden sharing
- TV
- Community dryer
- Towels
- Private parking space
- Iron & ironing board



First supply

- Toilet paper
- Soap



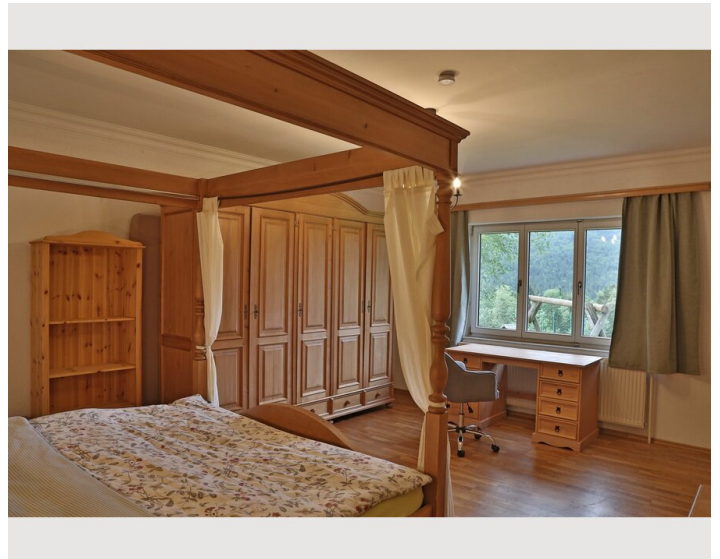
Kitchen

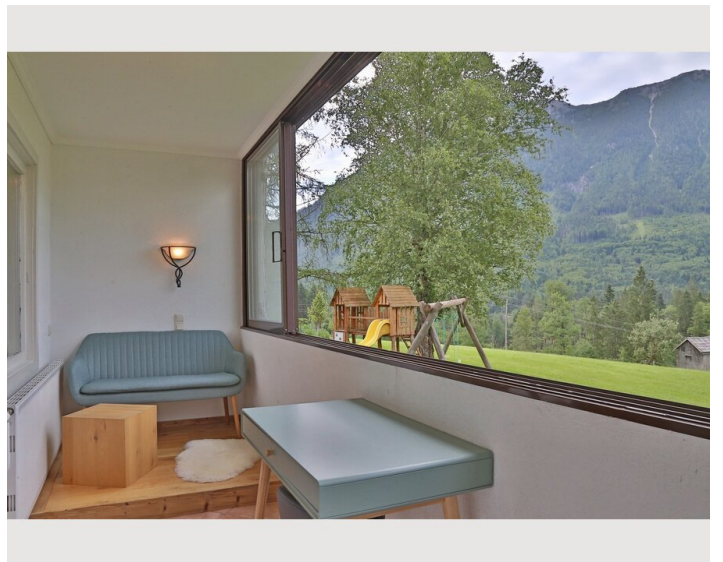
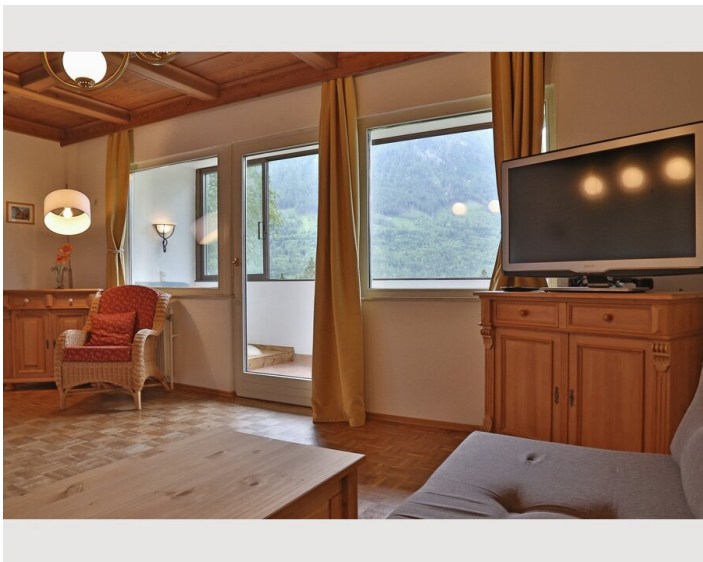
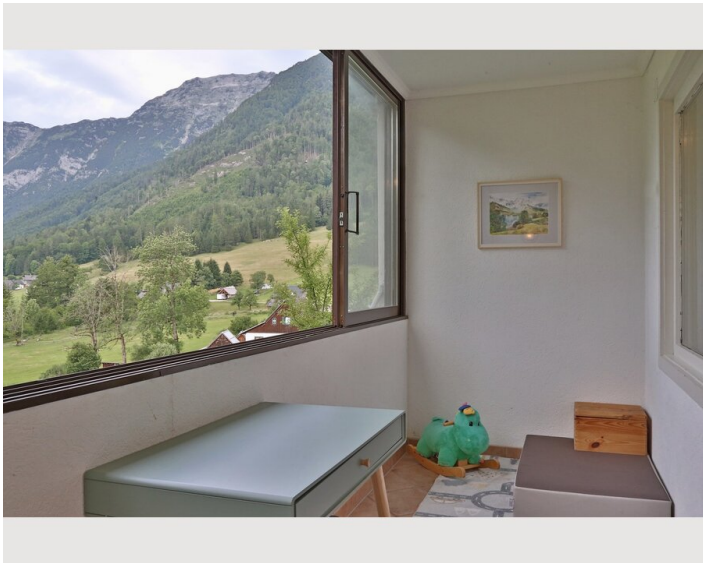
- Private kitchen
- Glasses/Tableware
- Dishwasher
- Cooking utensils
- Filter coffee

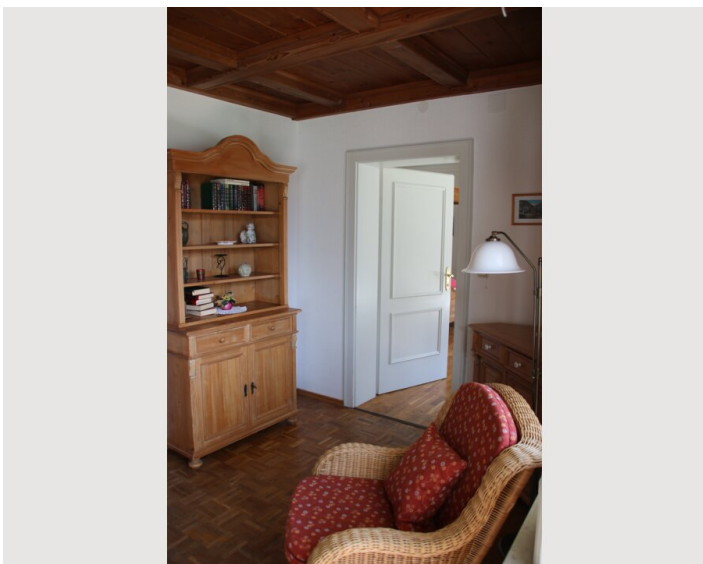
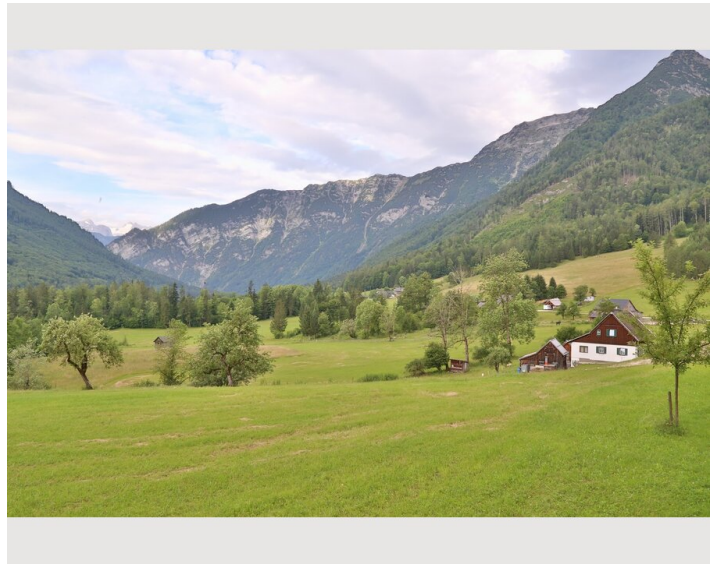
Informations

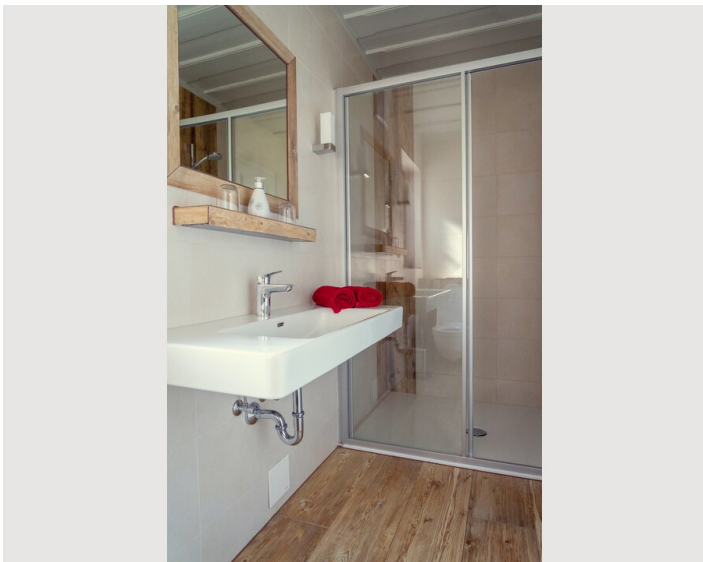
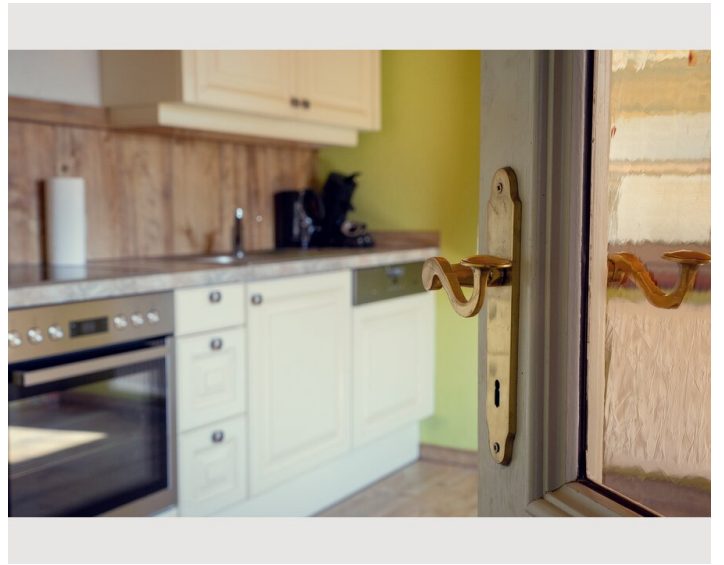
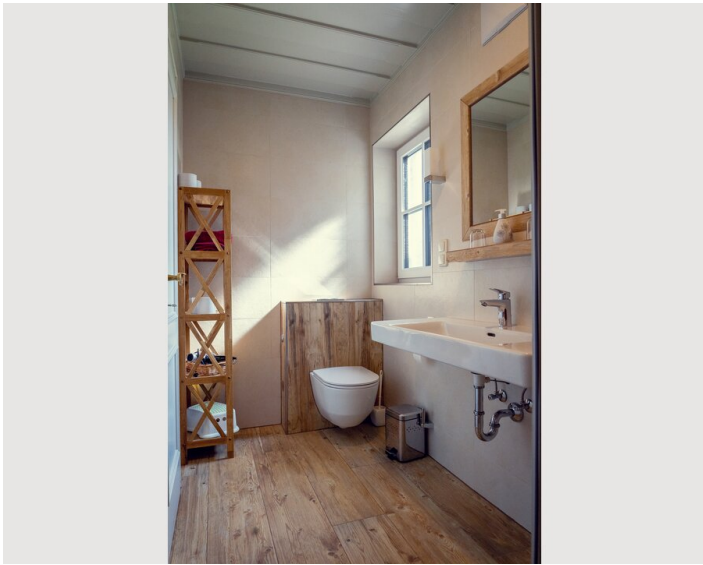
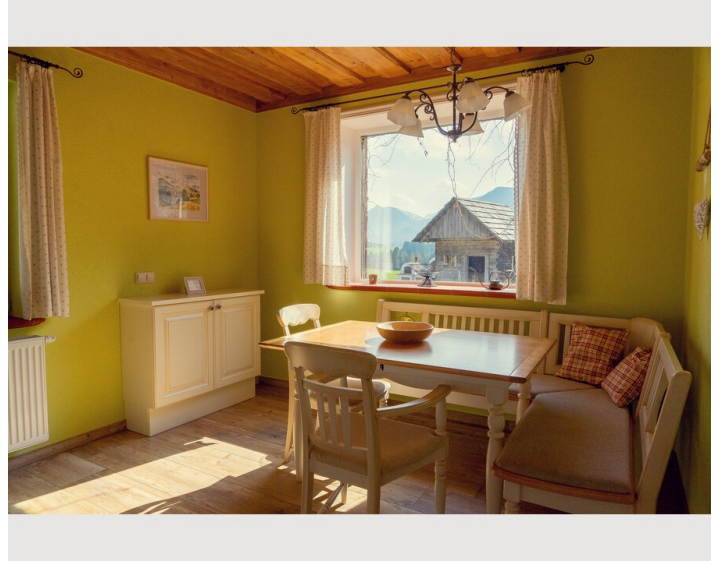
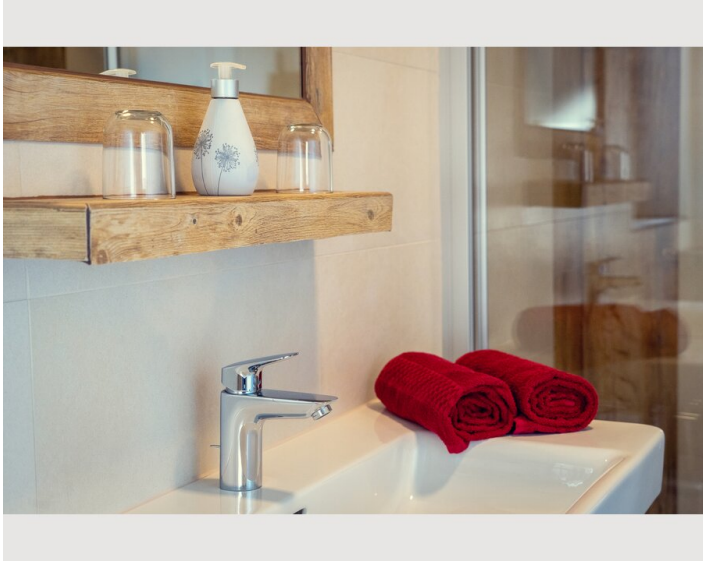
- Desk/Workplace
- Regular cleaning at extra cost

Picture gallery









Infrastructure



Town center: 3.5 km
Supermarket: 2.4 km
Petrol station: 3.3 km
Store for daily needs with extended opening hours: 3.3 km
Pharmacy: 3.7 km
Doctor: 3.7 km
Train station: 4.7 km
Co-working space: 3.6 km, 4.1 km

Grundlsee: 7.6 km
Lake Altaussee: 8.4 km
Ödensee: 12.1 km

Loser ski area: 10.8 km
Tauplitz ski area: 25.5 km

Location

