



3 ROOM APARTMENT, 5204 STRASSWALCHEN

Apartment with garden

Object number: YOGQ1

[View and rent online](#)

Featuring a terrace, Apartment with garden offers accommodation in Straßwalchen with free WiFi and garden views. 27 km from Salzburg Exhibition Center. Train station 100 m away on foot with hourly trains to Salzburg,

Period	19/12/2025 - 19/01/2026
Number of persons	2
Total incl. VAT.	€ 3.910,98
Security deposit	€ 2.900,00



Living space

105m²



Maximum occupancy

4 Persons



Complete accommodation [?]

1 Private bathroom 2 Separated bedrooms



Ground floor



Check-in

14:00 - 23:00 Clock



Check-out

06:00 - 14:00 Clock

Sleeping options

Bedroom 1



1x Double bed (1,80 m x 2 m)

Bedroom 2



1x Double bed (1,60 m x 2 m)

Descripton of accommodation

Featuring a terrace, apartment with garden offers accommodation in Straßwalchen with free WiFi and garden views. Situated 27 km from Messezentrum Salzburg, the property features a garden and free private parking.

This vacation home is equipped with 2 bedrooms, a kitchen with a fridge and a dishwasher, a flat-screen TV, a seating area and 1 bathroom fitted with a shower. Towels and bed linen are provided in this apartment.

Kapuzinerberg und Kapuzinerkloster is 27 km from Ferienwohnung mit Garten, while Festung Hohensalzburg is 28 km away. The nearest airport is Salzburg Airport, 34 km from Ferienwohnung mit Garten. Steindorf bei Straßwalchen train station is 100 meters away with an hourly train connection to Salzburg main station.

Equipment & Features



Basic equipment

- Terrace
 - Internet/Wifi
 - TV
 - Bedclothes
 - Private toilet
 - Vacuum cleaner
 - Cleaning utensils
 - Garden
 - Music system/docking station
 - Private washing machine
 - Towels
 - Private parking space
 - Iron & ironing board
 - Hairdryer
-



Fireplace

- Grill
-



First supply

- Toilet paper
 - Soap
 - Fridge filling on request
 - shampoo
 - Nespresso capsules
-



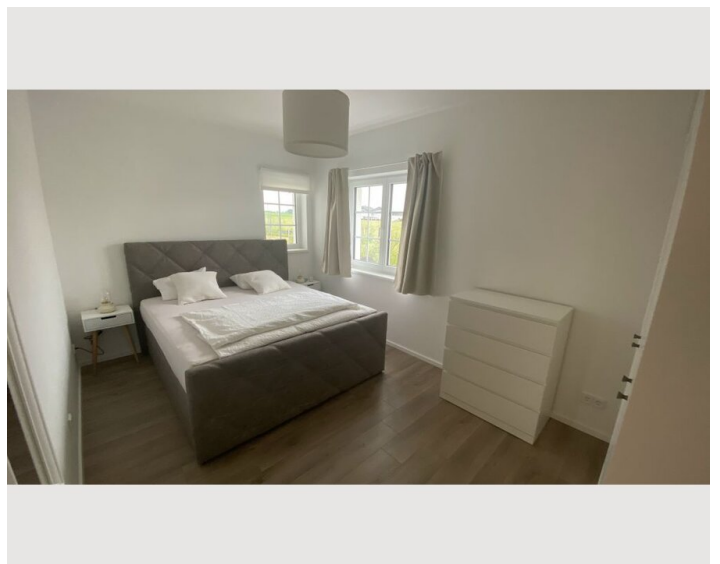
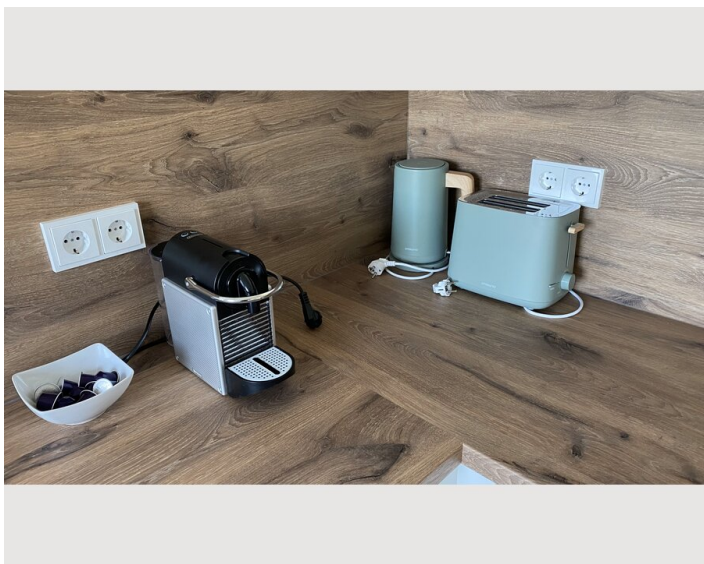
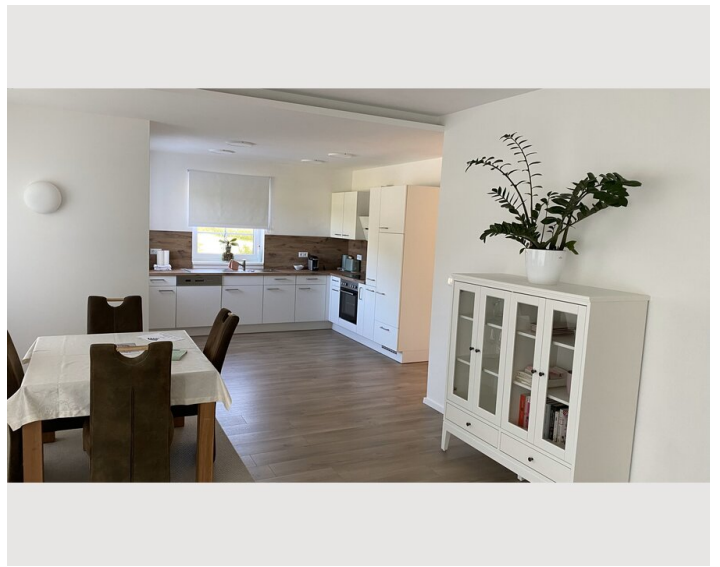
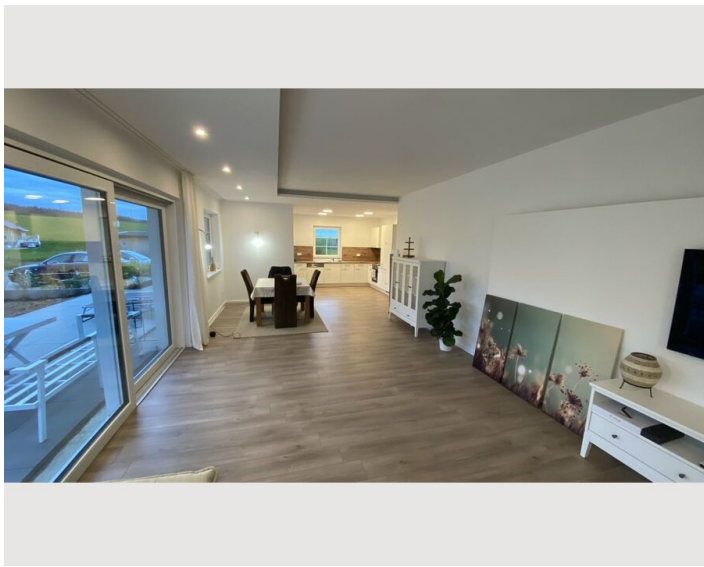
Kitchen

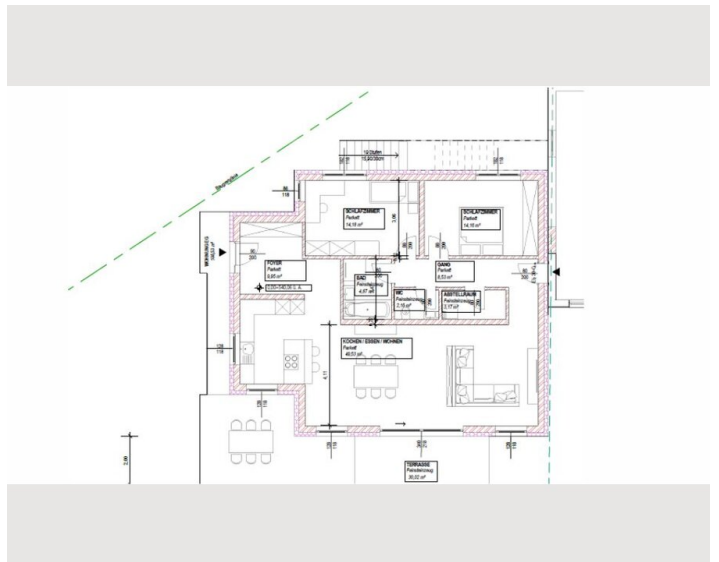
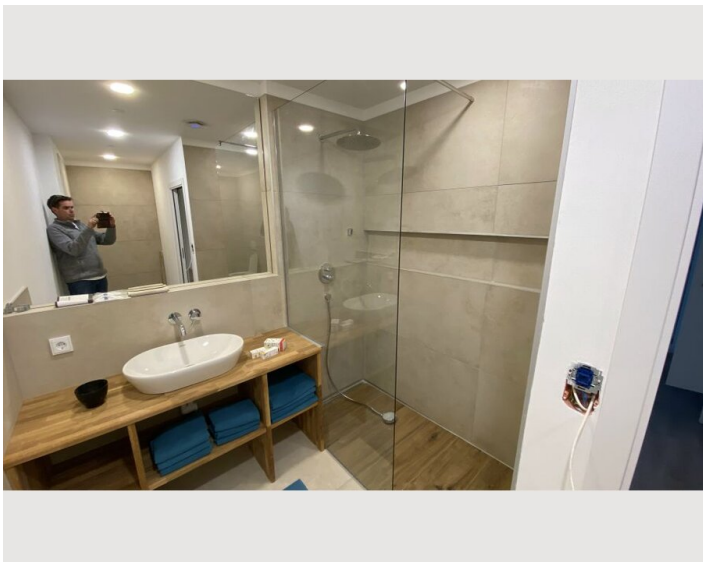
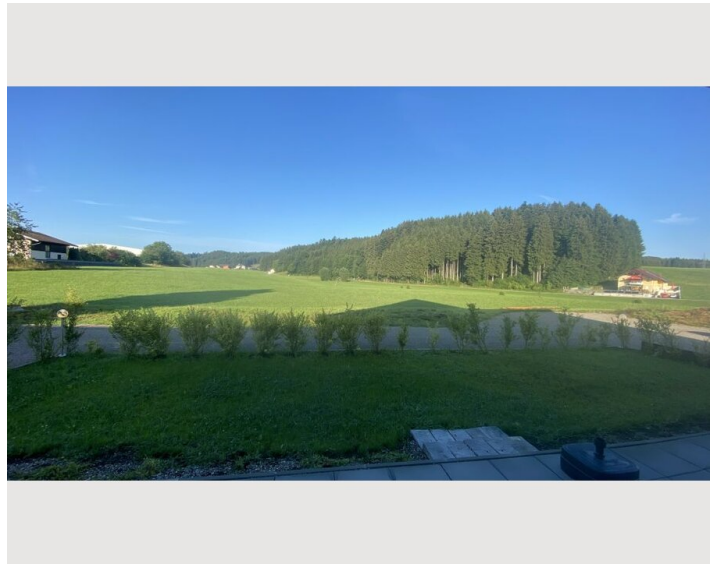
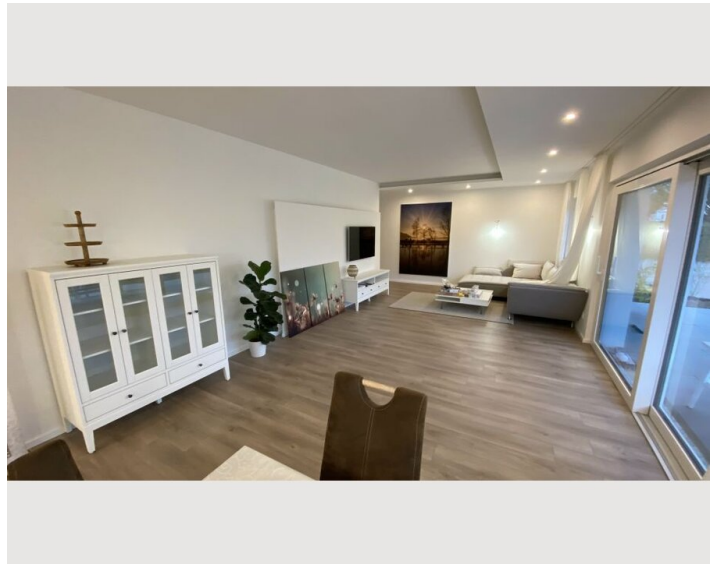
- Private kitchen
- Espresso machine
- Microwave
- Glasses/Tableware
- Dishwasher

Informations


- Suitable for children
- Desk/Workplace
- Pets on request
- Smoking not allowed
- Private entrance
- Regular cleaning free of charge

Picture gallery





Infrastructure

 railway station 100 m

The nearest supermarket is 1 km away, as are various restaurants serving local and international cuisine

Location

