



STUDIO APARTMENT, 9212 TECHELSBERG

Cozy apartment in a prime location directly on Lake Wörthersee

Object number: KYVA2

[View and rent online](#)

The apartmtent is directly between Velden and Pörtschach. It's a cosy place directly at the lake.

Period	12/01/ - 12/02/2026
Number of persons	2
Total incl. VAT.	€ 1.220,32
Security deposit	€ 900,00



Living space

50m²



Maximum occupancy

2 Persons



Complete accommodation [?]

1 Private bathroom 1 Separated bedroom 1 Living-Sleepingroom



1. floor



Check-in

10:00 - 22:00 Clock



Check-out

08:00 - 22:00 Clock

Sleeping options

Sleeping room



1x Double bed (1,60 m x 2 m)

Living & Sleeping

Descripton of accommodation

The apartment consists of a bedroom with an extra bathroom (shower), an extra kitchen, and an extra room (living room with dining table and access to the spacious balcony).

The apartment is located on the first floor at the end of a corridor connected to other terraced houses. It is accessible via steps.

Equipment & Features



Basic equipment

- Balcony
 - Garden sharing
 - Community washing machine
 - Towels
 - Private parking space
 - Iron & ironing board
 - Hairdryer
 - Garden
 - Internet/Wifi
 - Bedclothes
 - Private toilet
 - Vacuum cleaner
 - Cleaning utensils
-



Pool

- Swimming pond
-



Wellness

- Sauna
-



First supply

- Toilet paper
 - Soap
-



Kitchen

- Private kitchen
- Glasses/Tableware
- Cooking utensils

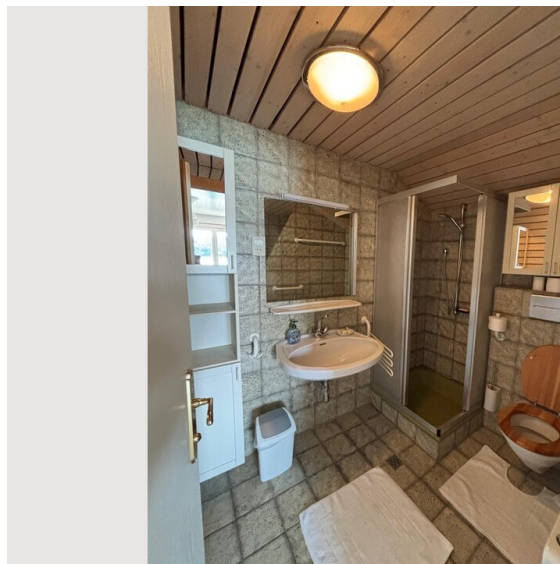
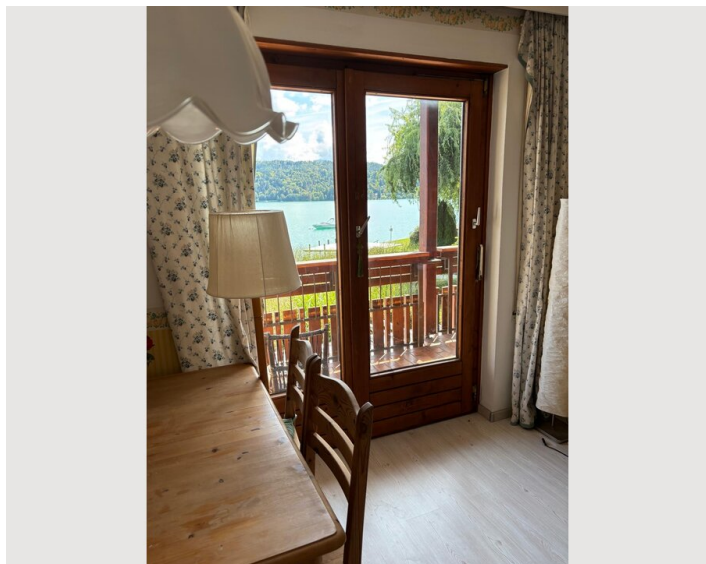
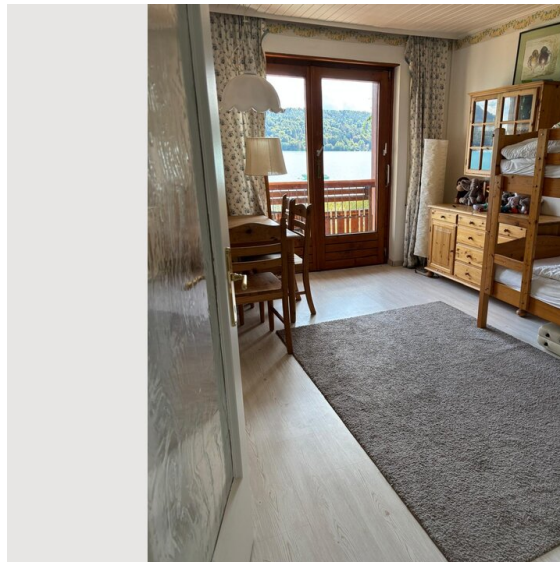
Informations

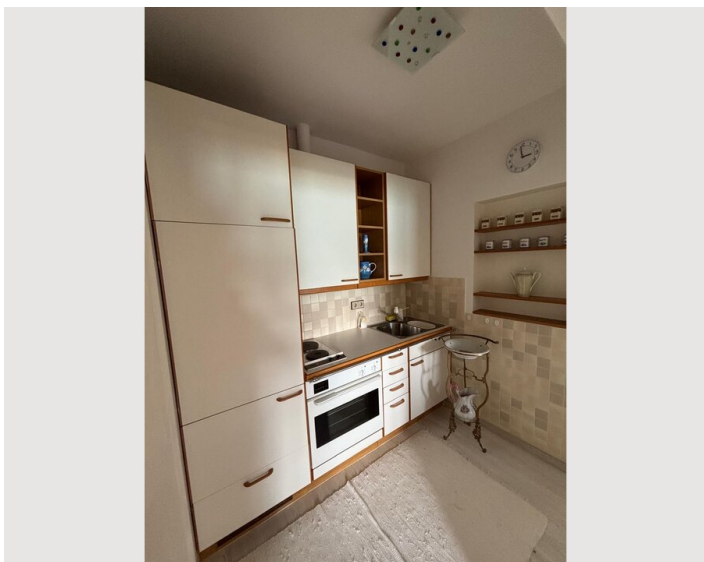
- Suitable for children
- Desk/Workplace
- Pets forbidden
- Smoking not allowed
- Private entrance
- Bicycle room free of charge

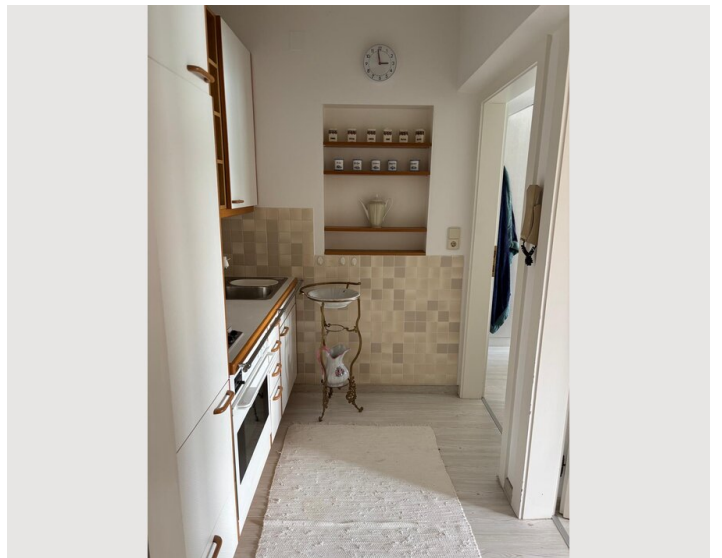
Additional services

All prices are gross per month - billing is done directly with the lessor.

Picture gallery









Infrastructure



Supermarkets are a 5-minute drive away. It takes 15 minutes by bike. Pharmacies and train stations are also nearby.

In winter, ski resorts such as Nassfeld are not far away.

Location

