



STUDIO APARTMENT, 6900 BREGENZ

City-Studio

Object number: QZPL1

[View and rent online](#)

Period	12/01/ - 12/02/2026
Number of persons	2
Total incl. VAT.	€ 1.740,62
Security deposit	€ 1.300,00

The studio is located in the heart of Bregenz. It is on the top floor (5th floor), has an elevator, and is very bright. The balcony faces southeast (= sunny). The furnishings are new and cheerfully colorful.



Living space

34m²



Maximum occupancy

1 Person



Complete accommodation [?]

1 Private bathroom 1 Living-Sleepingroom



5. floor

Elevator available



Check-in

15:00 - 20:00 Clock



Check-out

09:00 - 11:00 Clock

Sleeping options

Living & Sleeping



1x Double bed (1,40 m x 2 m)

Description of accommodation

The studio is divided into a bathroom with toilet, a hallway, a living/bedroom, a kitchen, and a balcony.

There is a bicycle storage room and private parking.

Equipment & Features



Basic equipment

- Balcony
- Private washing machine
- Community dryer
- Towels
- Private parking space
- Cleaning utensils
- Internet/Wifi
- Community washing machine
- Bedclothes
- Private toilet
- Vacuum cleaner



First supply

- Toilet paper
- Nespresso capsules
- Soap
- Fridge filling on request



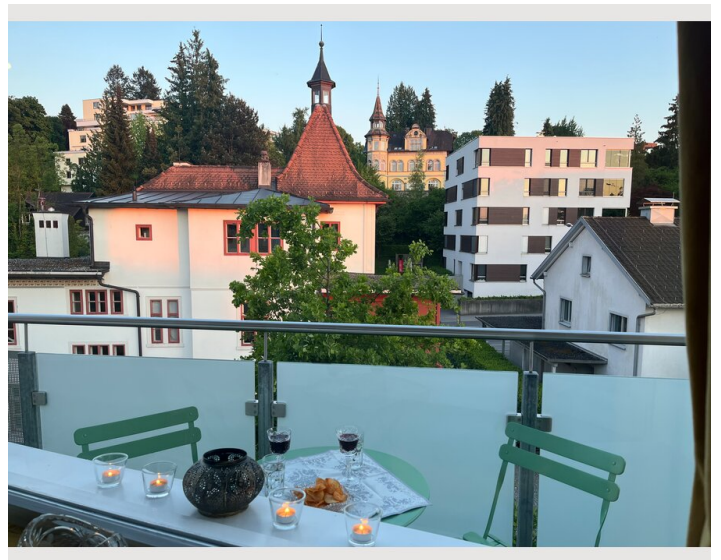
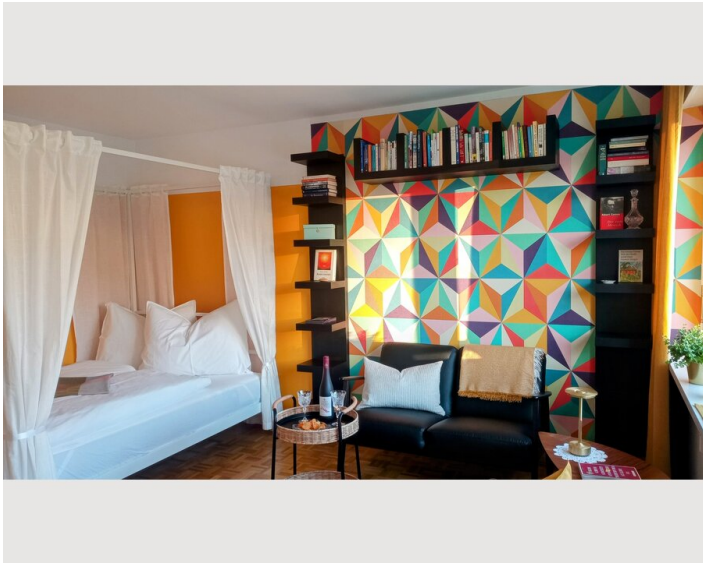
Kitchen

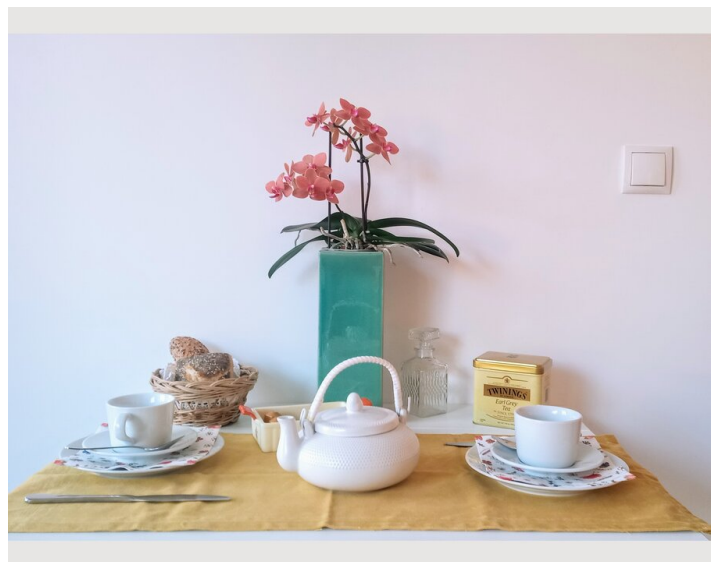
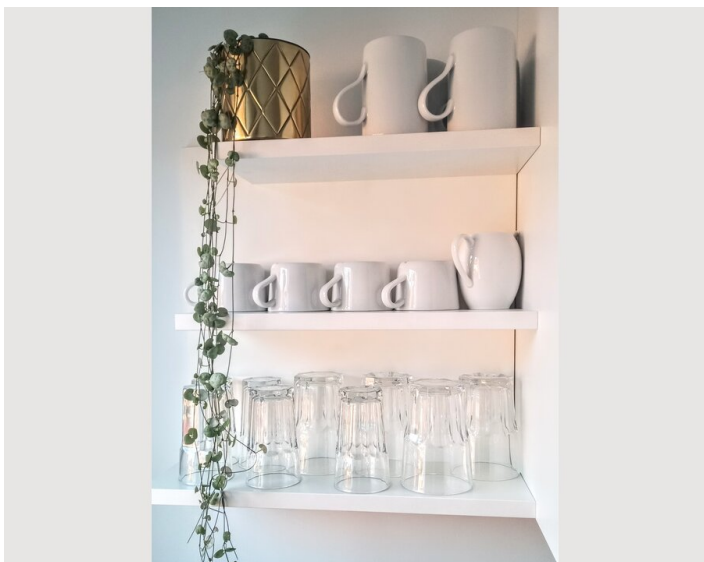
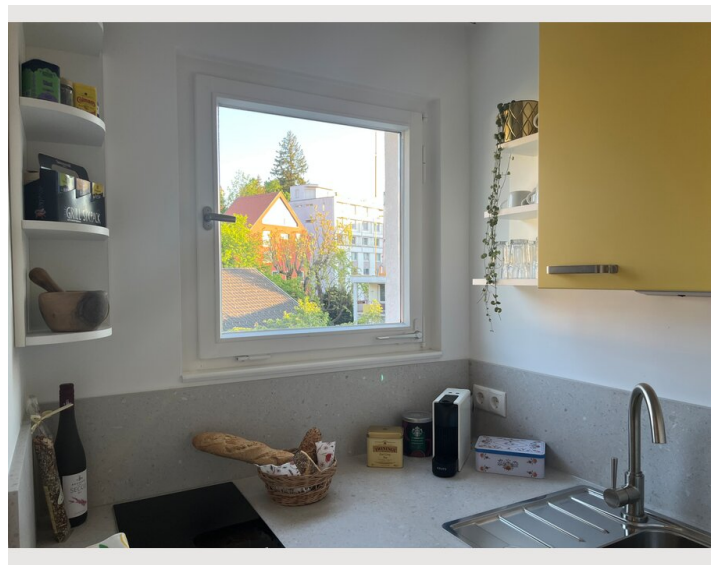
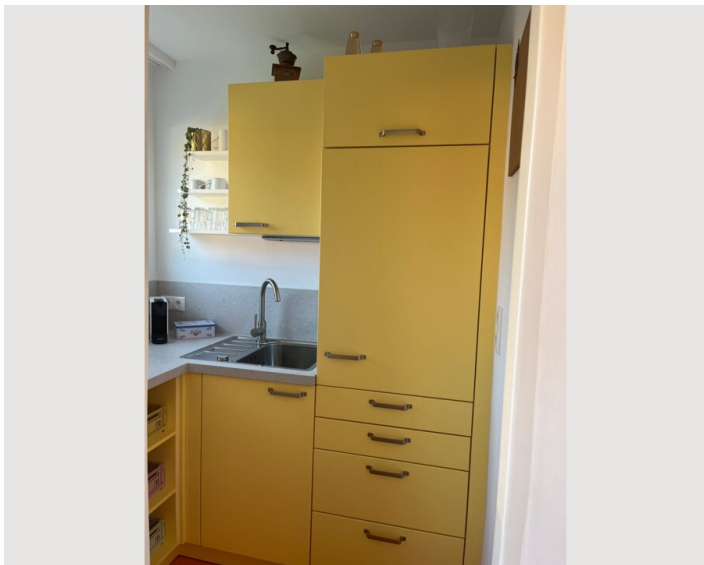
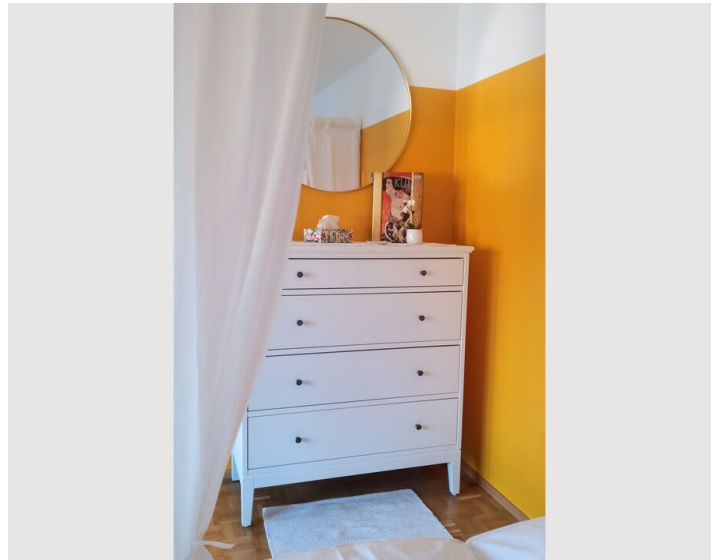
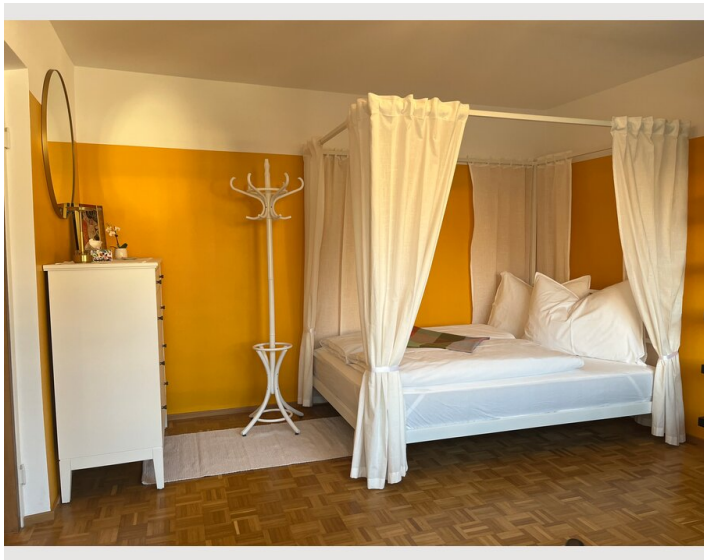
- Private kitchen
- Glasses/Tableware
- Cooking utensils
- Espresso machine

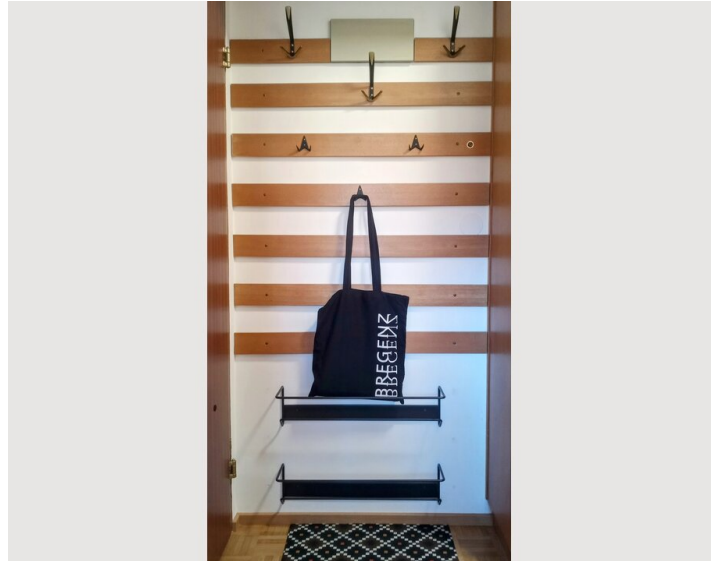
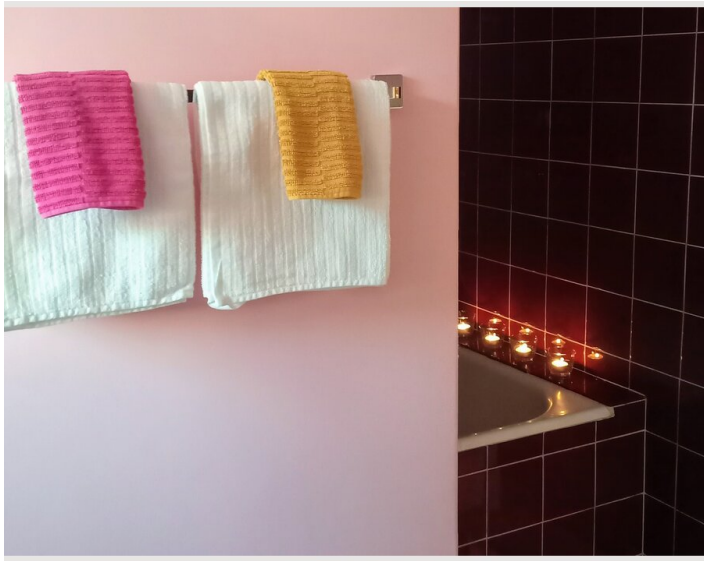
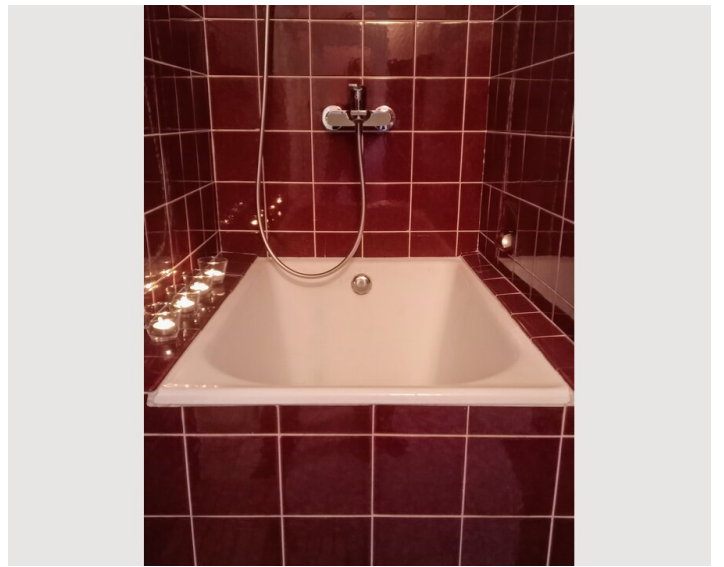
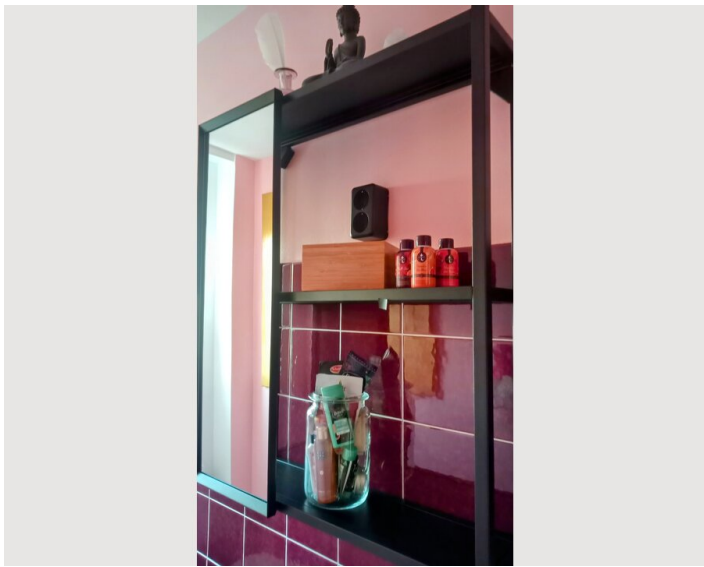
Informations

- Smoking not allowed
- Private entrance
- Regular cleaning at extra cost
- Desk/Workplace
- Pets forbidden
- Bicycle room free of charge


Picture gallery











Infrastructure

 5 minutes by foot

 1 hour by bus

 5 minutes by foot

 5 minutes by foot

 5 minutes by foot

The building (a 5-story block of flats) is centrally located:

- 5-minute walk to the pedestrian zone
- 5-minute walk to cafes, bars, restaurants, bank, pharmacy, theater, and museums
- 5-minute walk to the Old Town
- 5-minute walk to the train station

- 10-minute walk to the indoor swimming pool with spa area
- 10-minute walk to the cinema
- 10-minute walk to Lake Constance
- 10-minute walk to the Pfänder cable car
- 10-minute walk to the forest and mountains

- 7-minute train ride to Lindau (Germany)
- 9-minute train ride to St. Margrethen (Switzerland)
- 30-minute train ride to the nearest ski resort

- 15-minute bus ride to the bouldering gym
- 15-minute bus ride to the riding stables

and many other excursion destinations.

Location

