



2 ROOM APARTMENT, 9201 KRUMPENDORF

Apartemente Wörthersee - Berthastraße 13 Top 20 / 304

Object number: ABFZ2

[View and rent online](#)

The apartment is about 150 meters from the swimming lake (private beach). The train station is within walking distance. On the third floor (elevator) you enter the apartment, and you will find yourself in the brightly lit living area, with a view

Period	07/03/ - 07/04/2026
Number of persons	2
Total incl. VAT.	€ 2.187,10
Security deposit	€ 1.700,00

Living space

48m²

Maximum occupancy

4 Persons

Complete accommodation

1 Private bathroom 1 Separated bedroom

3. floor

Elevator available

Check-in

15:00 - 19:00 Clock

Check-out

08:00 - 11:00 Clock

Sleeping options

Sleeping room



1x Double bed (1,80 m x 2 m)



1x Sofa bed (2 persons)

Descripton of accommodation

The apartment has a toilet, a bathroom with shower, a dressing room, a bedroom and a living room with kitchen. Facing south there is a large balcony divided into the bedroom and the living room.

Equipment & Features



Basic equipment

- Balcony
- TV
- Towels
- Private parking space
- Aircondition
- Internet/Wifi
- Bedclothes
- Private toilet
- Garage
- Hairdryer



Pool

- Outdoor Pool



Wellness

- Sauna
- Fitness room
- Infrared cabin



First supply

- Toilet paper
- Soap
- Fridge filling on request
- shampoo
- Nespresso capsules



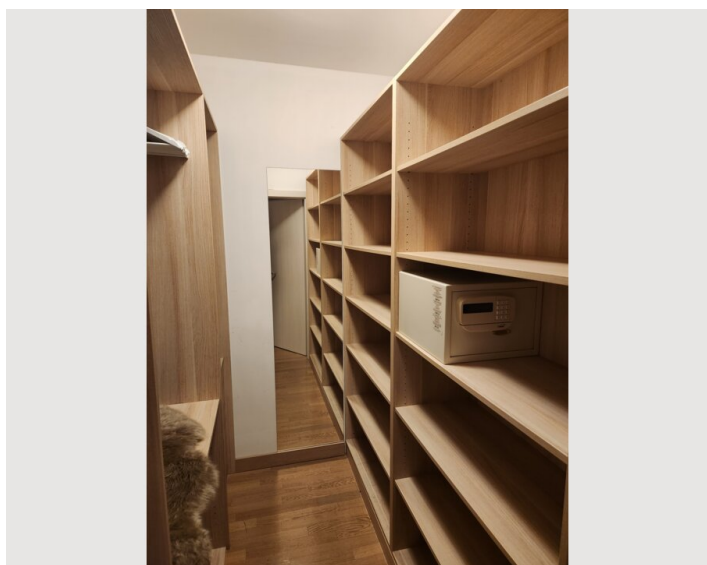
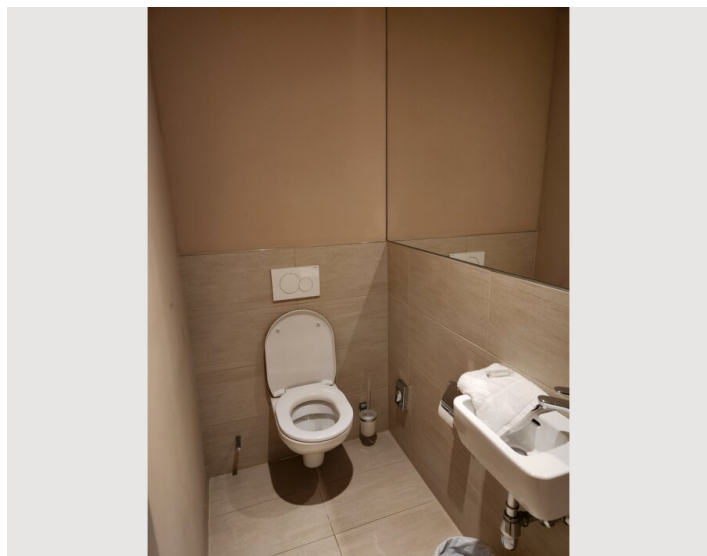
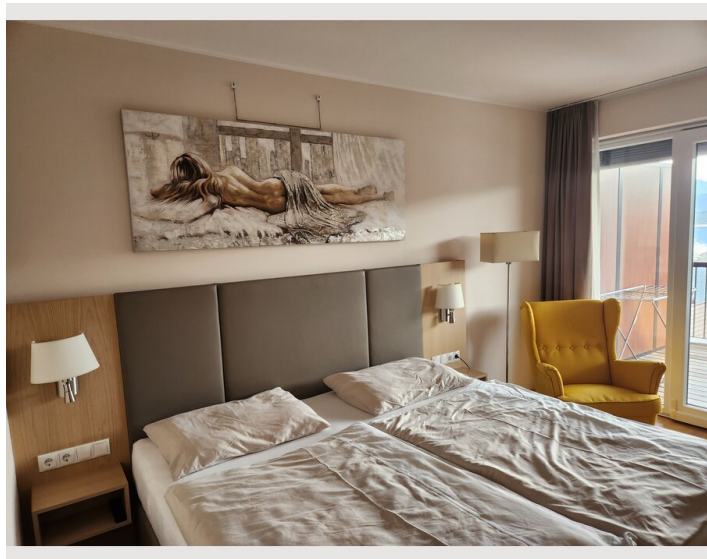
Kitchen

- Kitchenette
- Glasses/Tableware
- Microwave
- Cooking utensils
- Espresso machine

Informations

- Suitable for children
- Desk/Workplace
- Regular cleaning at extra cost
- Smoking not allowed
- Pets forbidden
- Bicycle room free of charge

Picture gallery



Infrastructure



The train station and the center of Krumpendorf are within easy reach, as well as the pharmacy or grocery store. The bike path passes directly by the location of the apartment.

Location

