

2 ROOM APARTMENT, 5163 MATTSEE

Spacious appartement with excellent lake views

Object number: SCHO6

[View and rent online](#)

Listen to the birds singing in the woods nearby and enjoy the wonderful views over Mattsee. Relax with a sundowner on the wooden patio or cuddle up on one of the sofas in the spacious and comfortable inside living area.

Period	09/12/2025 - 09/01/2026
Number of persons	2
Total incl. VAT.	€ 1.176,68
Security deposit	€ 900,00



Living space

67m²



Maximum occupancy

4 Persons



Complete accommodation [?]

1 Private bathroom 1 Separated bedroom 1 Living-Sleepingroom



1. floor



Check-in

15:00 - 23:00 Clock



Check-out

07:00 - 11:00 Clock

Sleeping options

Sleeping room



1x Double bed (1,60 m x 2 m)

Living and sleeping



1x Sofa bed (2 persons)

Descripton of accommodation

You live directly at the edge of the forest 100m above the Mattsee with a magnificent view. The exclusive apartment with 56 sqm impresses with its generous room layout and large windows, which allow unique views of the surroundings from every area.

The comfortable living area includes a kitchen block, dining area and two separate sitting areas (one with a sofa bed). There is also a spacious bathroom and a bedroom.

The large terrace with a view over the lakes of the Dreiseenland invites you to relax and enjoy.

The area is very quiet and the perfect starting point for many outdoor activities such as cycling, running, hiking, relaxing days at the lake, sailing, stand up paddling, windsurfing and much more. On request you can borrow our StandUpPaddle or a bicycle.

Equipment & Features



Basic equipment

- Balcony
- Community washing machine
- Bedclothes
- Private toilet
- Garage
- Iron & ironing board
- Hairdryer
- Internet/Wifi
- Community dryer
- Towels
- Private parking space
- Vacuum cleaner
- Cleaning utensils



First supply

- Toilet paper
- Soap
- shampoo
- Fridge filling on request



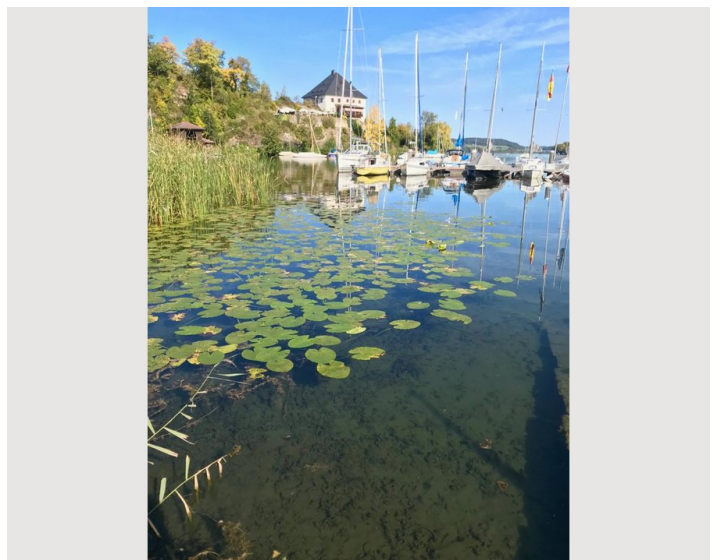
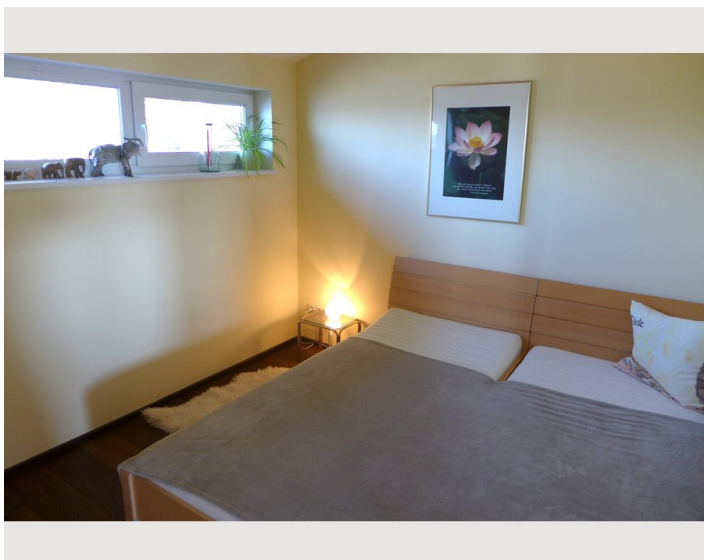
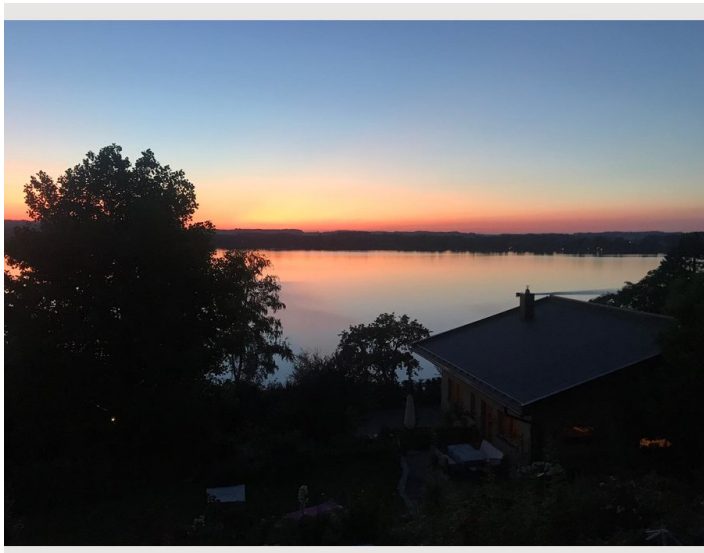
Kitchen

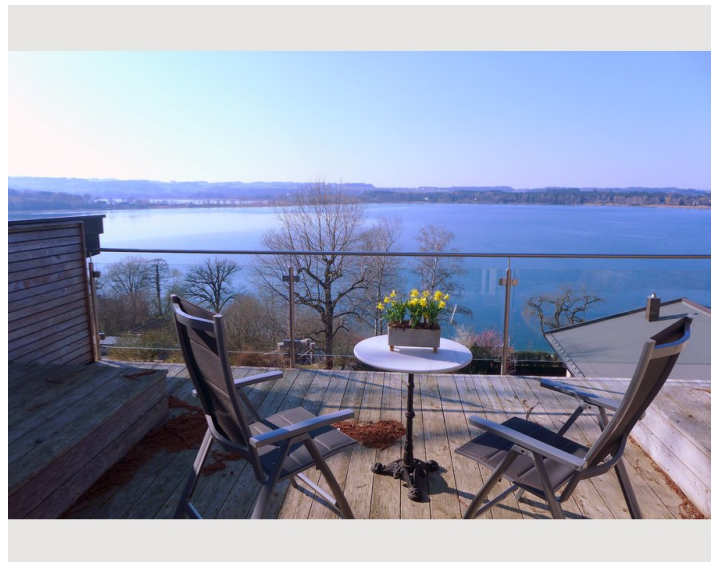
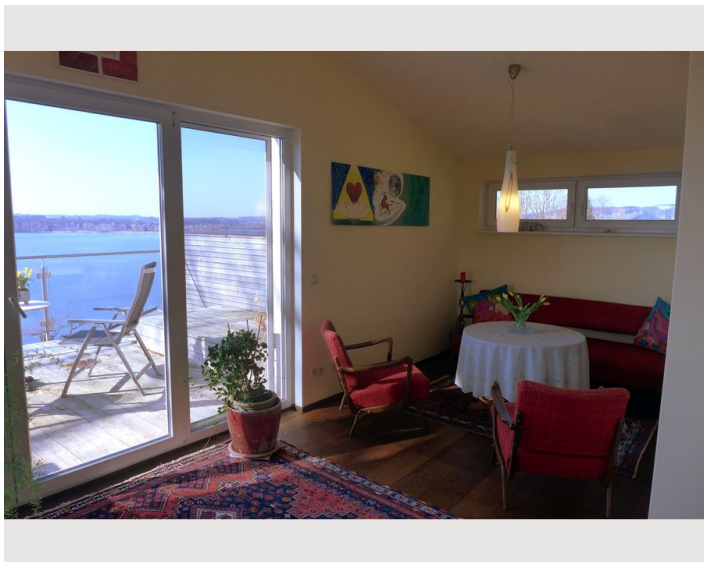
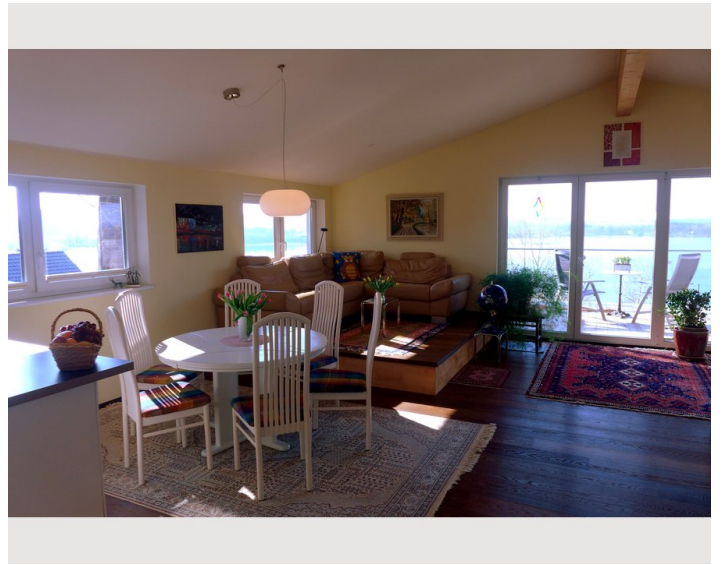
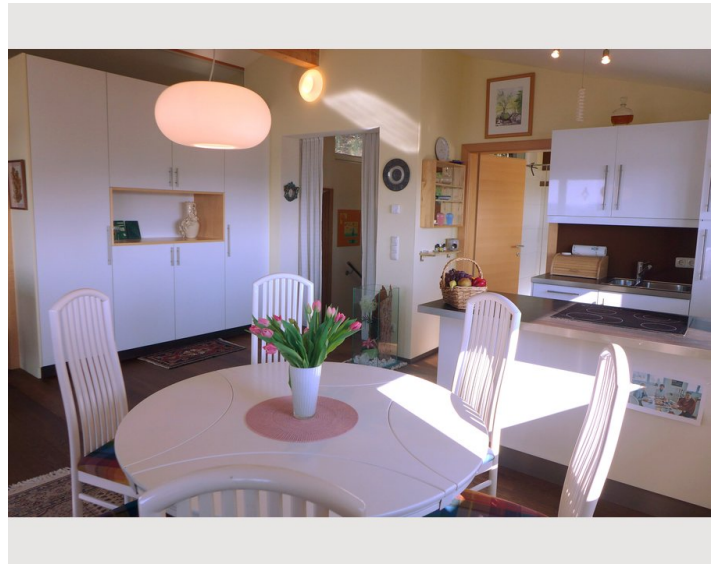
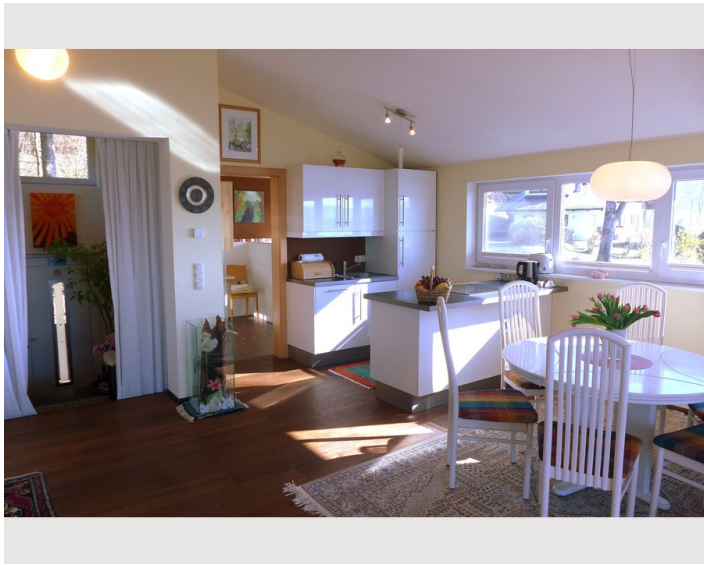
- Private kitchen
- Glasses/Tableware
- Dishwasher
- Cooking utensils
- Espresso machine

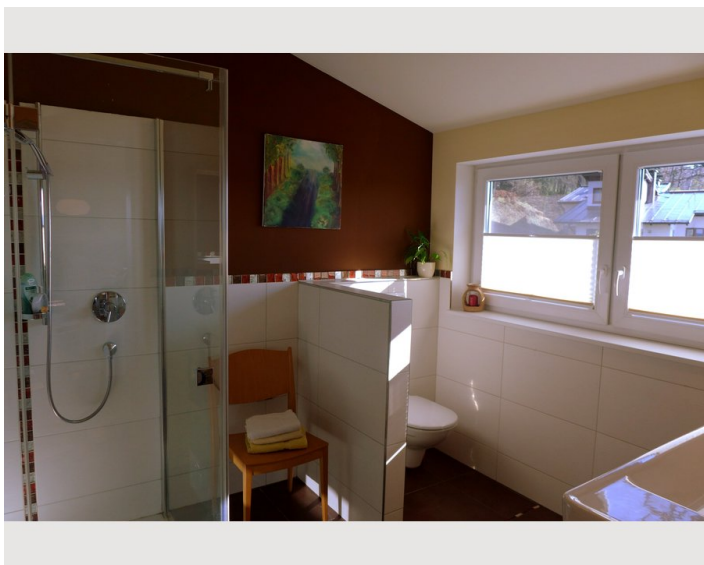
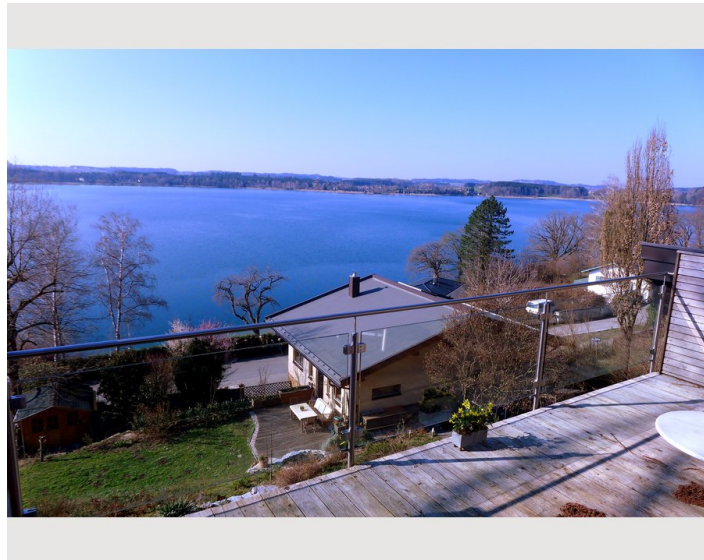
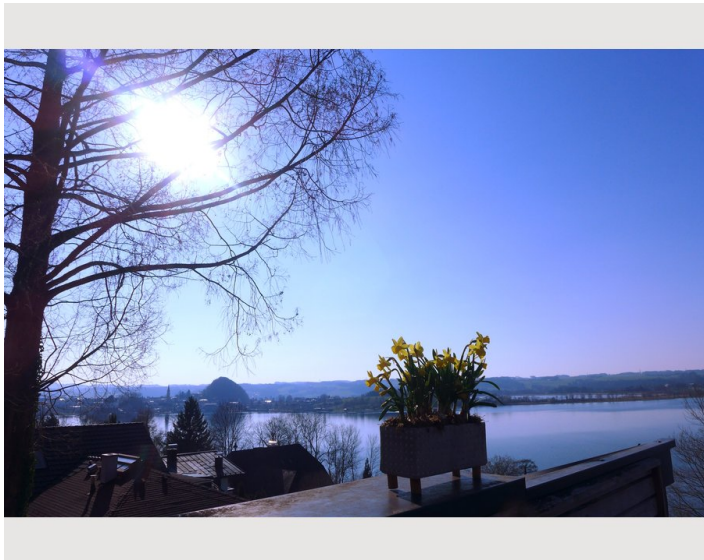
Informations

- Suitable for children
- Desk/Workplace
- Pets on request
- Smoking not allowed
- Private entrance
- Regular cleaning at extra cost

Picture gallery







Infrastructure



3 minutes driving (Spar)



5 minutes by car (Mattsee centre)

Mattsee centre is 20 minutes walk or 5 minutes by car. In the centre you will find all necessary shops, a pharmacy, the post office, numerous restaurants, banks and the open-air swimming pool (including boat rental). If you want to jump into the lake for a short time without paying admission to the open-air swimming pool, you can do so about 1.5 km from the apartment.

Location

