



3 ROOM APARTMENT, 4810 GMUNDEN

## Traunseeblick 2

Object number: WOLJ2

[View and rent online](#)

<b>Period</b>	03/05/ - 03/06/2026
<b>Number of persons</b>	2
<b>Total incl. VAT.</b>	€ 3.645,17
<b>Security deposit</b>	€ 2.800,00

Welcome to our holiday apartment Wolfis Traunseeblick 2



### Living space

65m<sup>2</sup>



### Maximum occupancy

4 Persons



### Complete accommodation <sup>?</sup>

1 Private bathroom 1 Separated bedroom 1 Living-Sleepingroom



### 2. floor



### Check-in

15:00 - 21:30 Clock



### Check-out

05:00 - 11:00 Clock

## Sleeping options

### Sleeping room



1x Double bed (1,60 m x 2 m)

### Living & Sleeping

## Descripton of accommodation

Welcome to our holiday apartment Wolfis Traunseeblick 2

Enjoy your holiday in our beautiful Gmunden with many sights and the Traunsee.

Our holiday flat Traunseeblick 2 is located on the second floor and offers you a cosy eat-in kitchen with a large dining table and a living room with a pull-out sofa bed.

In this quiet one-way street, 100 m from the lake, you will find the 57m<sup>2</sup> holiday flats on the 1st and 2nd floor (without lift) with a view of Lake Traunsee and Traunstein.

There is enough space for 4 people to relax and feel good in a cosy kitchen with dining area, living room with west-facing balcony, a bedroom and a bathroom with shower. There is a free car park directly in front of the house.

The tram can be reached on foot in one minute. 100m to the public bathing lake. Good infrastructure! Cafe, restaurants, shopping facilities and sights in the immediate vicinity.

## Equipment & Features



### Basic equipment

- Balcony
  - TV
  - Towels
  - Aircondition
  - Internet/Wifi
  - Bedclothes
  - Private parking space
  - Hairdryer
- 



### First supply

- Toilet paper
  - Nespresso capsules
  - Soap
- 



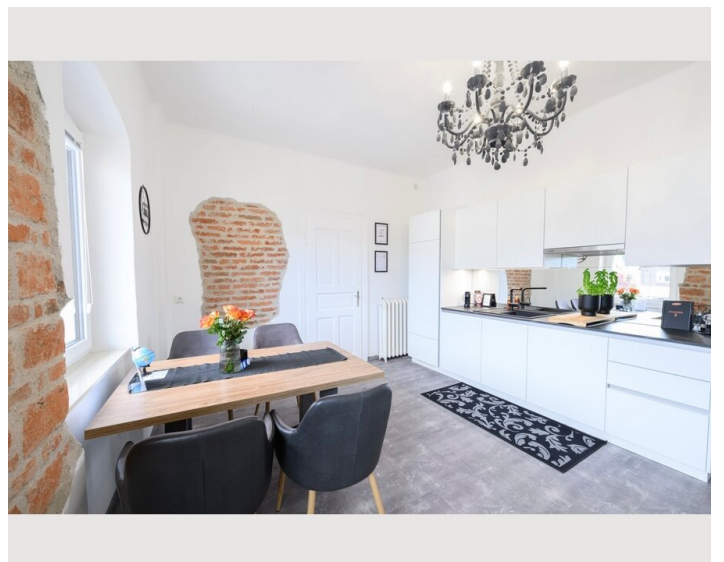
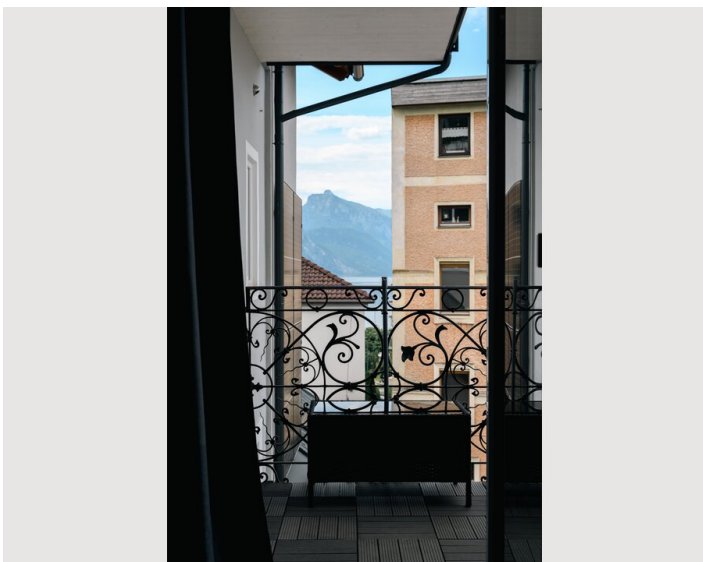
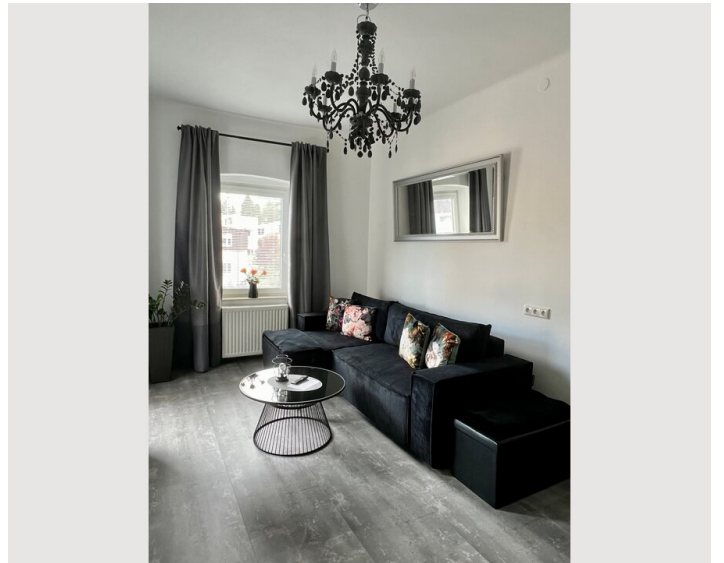
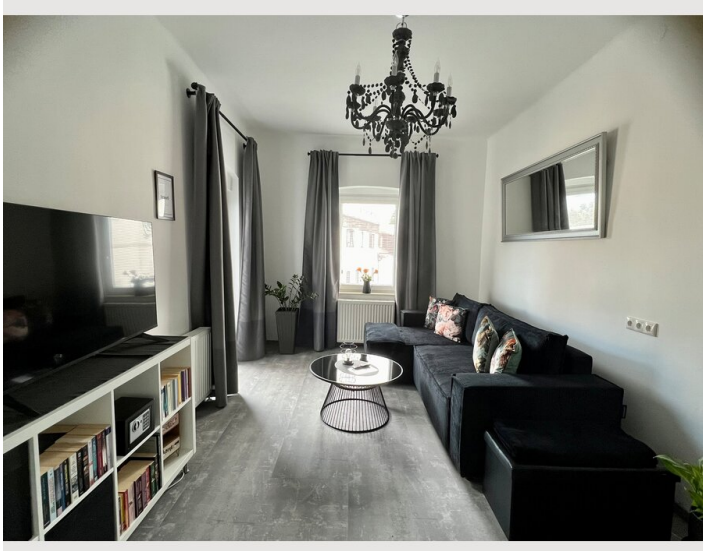
### Kitchen

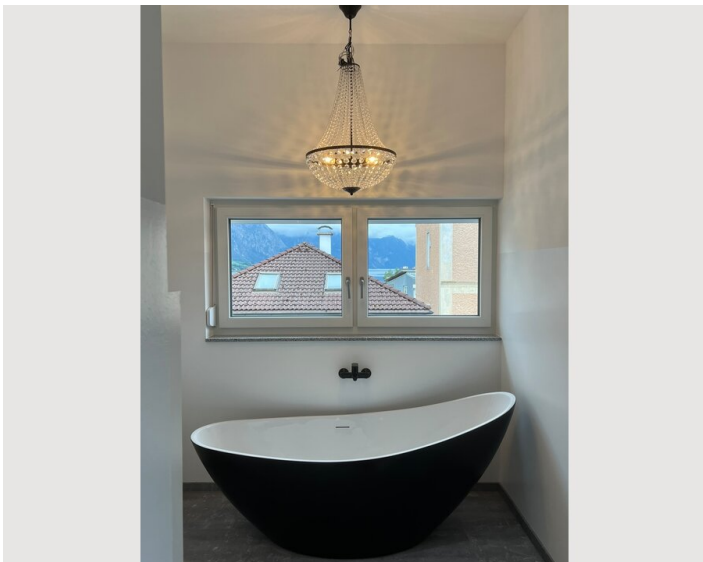
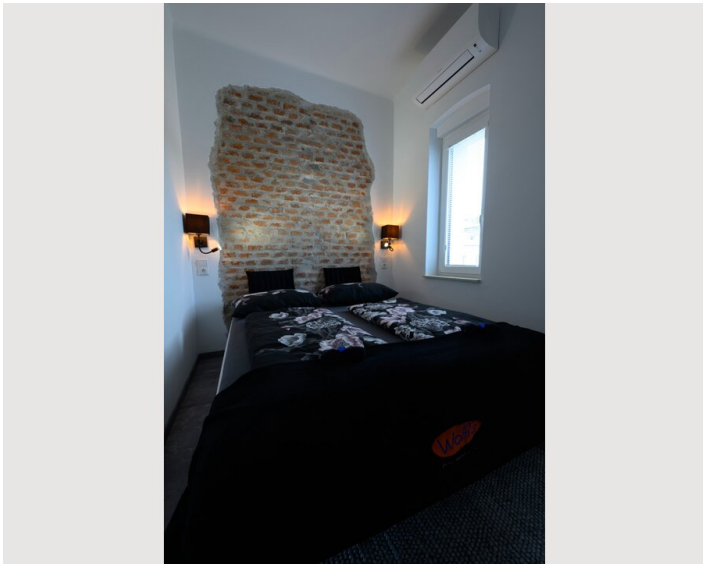
- Private kitchen
- Glasses/Tableware
- Dishwasher
- Cooking utensils
- Espresso machine

## Informations

- Smoking not allowed
- Pets forbidden
- Private entrance
- Bicycle room free of charge

## Picture gallery





## Infrastructure

📍 Gmunden - centre within 5-10 min. walking distance

🚊 Gmunden railway station can be reached by tram in 8 minutes or on foot in approx. 25 minutes.

🚊 Tram stop within 1 min. walking distance

On the Esplanade, 100 metres away, you will find shops, cafés and restaurants.

Furthermore, the tram stop is only 1 minute away.

The nearest supermarket (Spar) is only 600 metres away and can be easily reached on foot or by tram.

## Location

