



STUDIO APARTMENT, 4020 LINZ

Studio apartment with terrace and parking space

Object number: FRR11

[View and rent online](#)

Period	14/06/ - 14/07/2025
Number of persons	2
Total incl. VAT.	€ 1.733,44
Security deposit	€ 1.300,00

Fully equipped studio apartment with terrace, rental parking space, centrally located near Landstraße, train station & Landestheater, bright & friendly, consisting of living room/bedroom with bed, kitchenette, bathroom with shower, WC, anteroom, wash



Living space

25m²



Maximum occupancy

2 Persons



Complete accommodation ?

1 private bathroom 1 Living-Sleepingroom



5. floor

Elevator available



Check-in

16:00 - 19:00 Clock



Check-out

07:00 - 09:00 Clock

Sleeping options

Living and sleeping



1x Double bed (1,40 m x 2 m)

Descripton of accommodation

The apartment has a west-facing, sunny terrace. To get to the individual floors, you can either take the in-house elevator or the sporty staircase (elevator to the 4th floor, apartment is on the 5th floor).

The apartment has basic equipment for cooking and eating such as crockery, cutlery, a coffee machine, dining table with chairs, kettle, toaster, microwave, fridge, stove and glasses. There is also a closet with hangers and hooks as well as pillows, blankets and bed linen. The terrace is equipped with balcony furniture. A mobile air conditioning unit is available. The rental property is rented for between 1 and 6 months.

Translated with DeepL.com (free version)

Equipment features



Basic equipment

- Balcony
 - Roof-terrace
 - TV
 - Bedclothes
 - Private toilet
 - On the road without time limit without any cost
 - Vacuum cleaner
 - Cleaning utensils
 - Terrace
 - Internet/Wifi
 - Private washing machine
 - Towels
 - Private parking space
 - Aircondition
 - Iron & ironing board
 - Hairdryer
-



First supply

- Toilet paper
 - Nespresso capsules
-



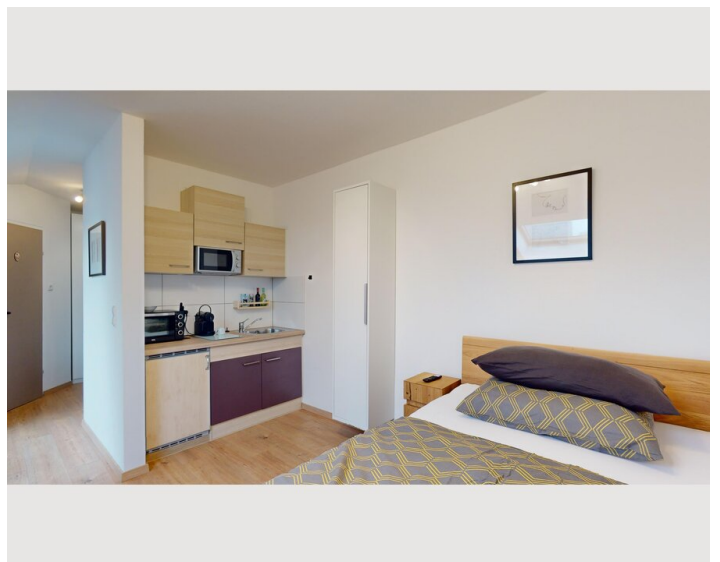
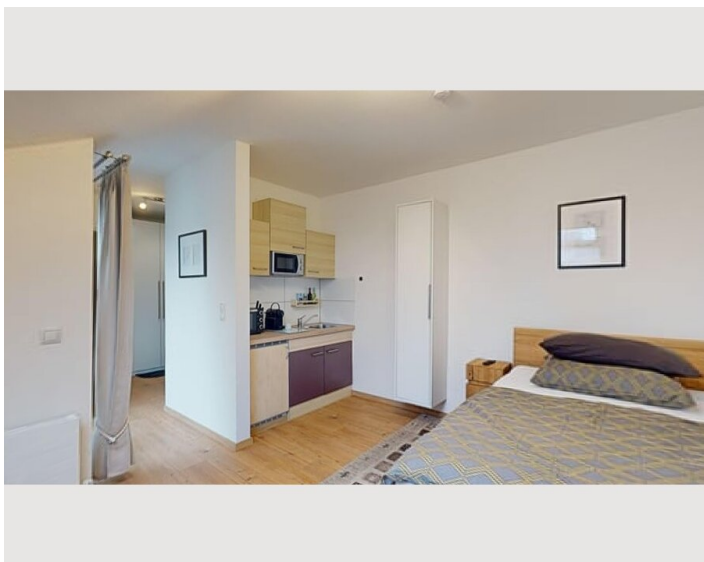
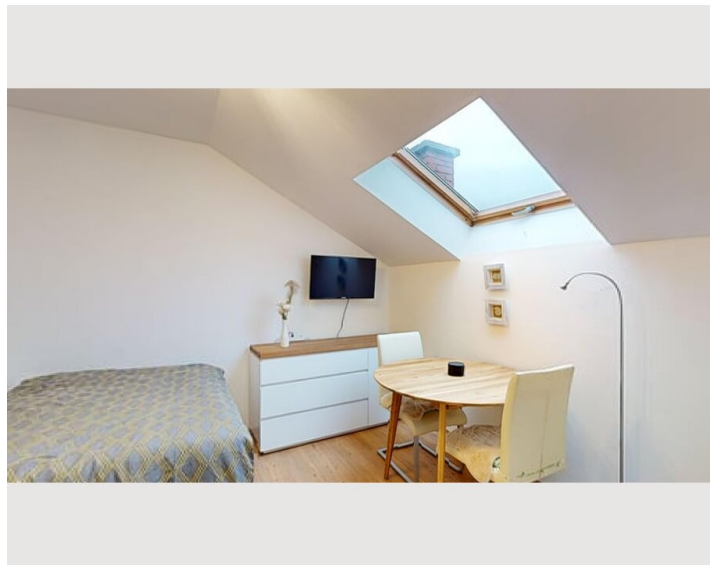
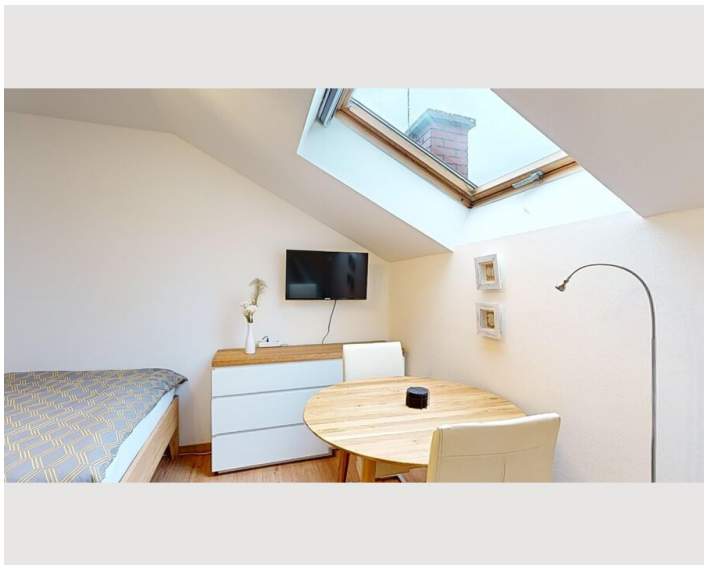
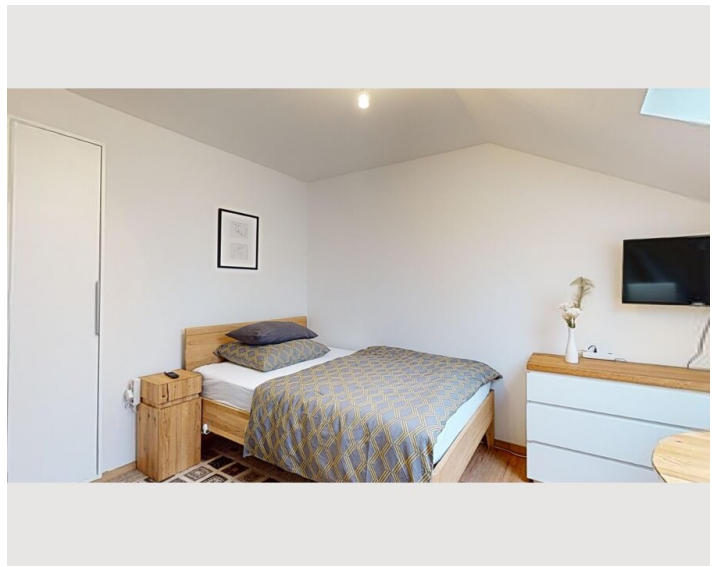
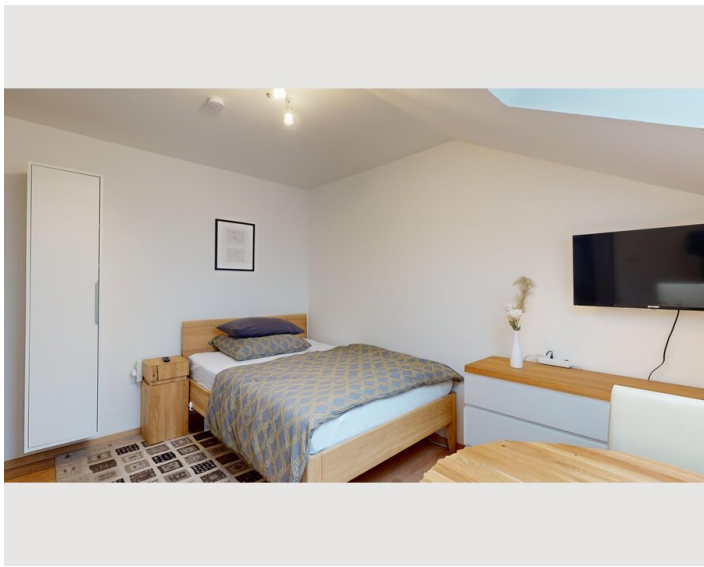
Kitchen

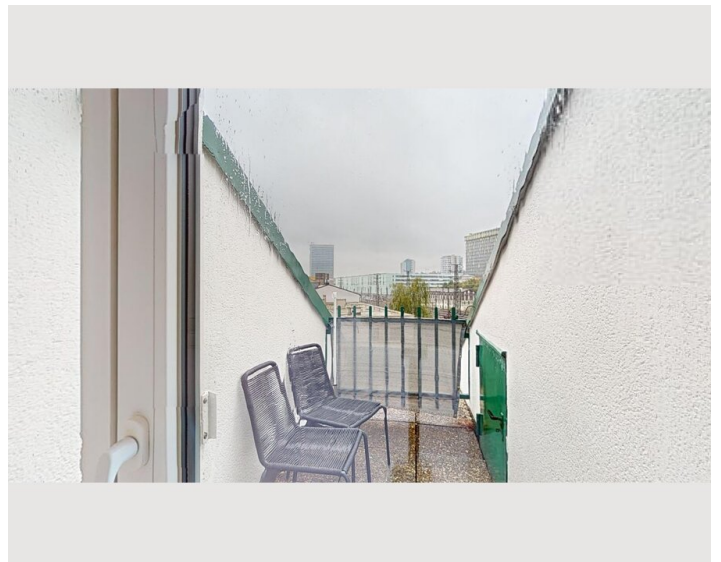
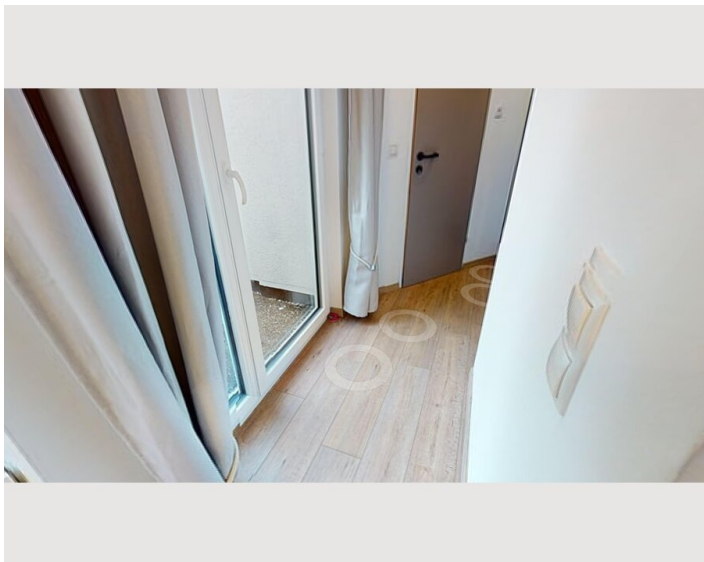
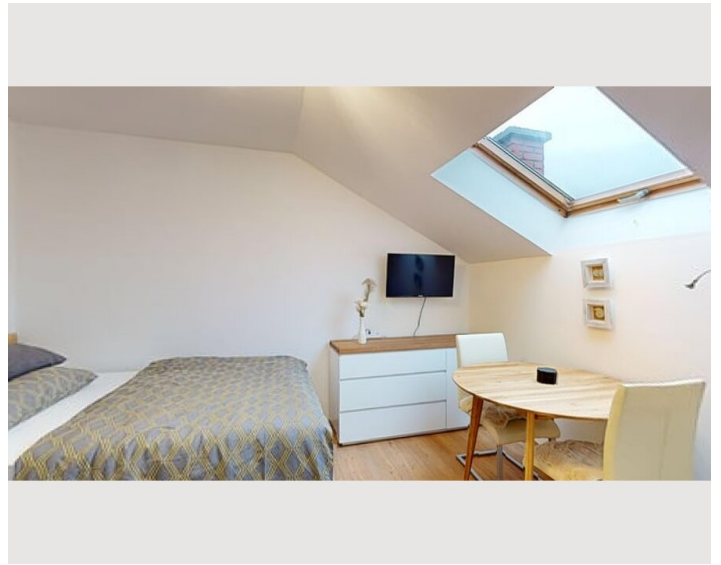
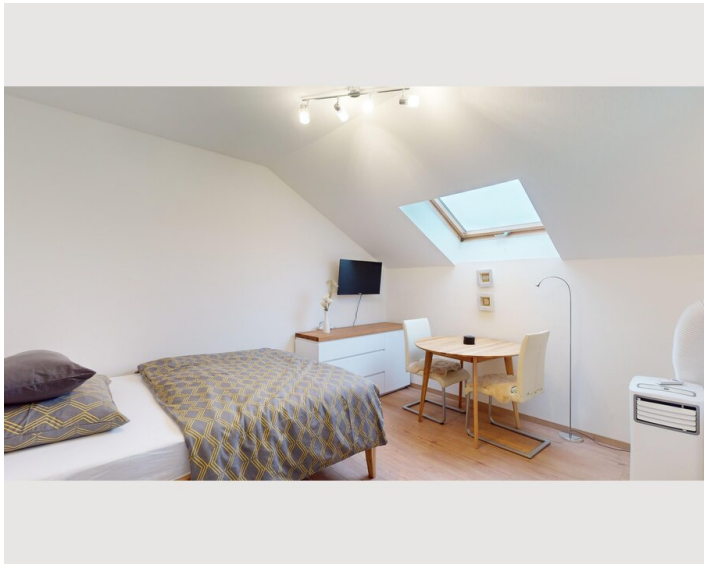
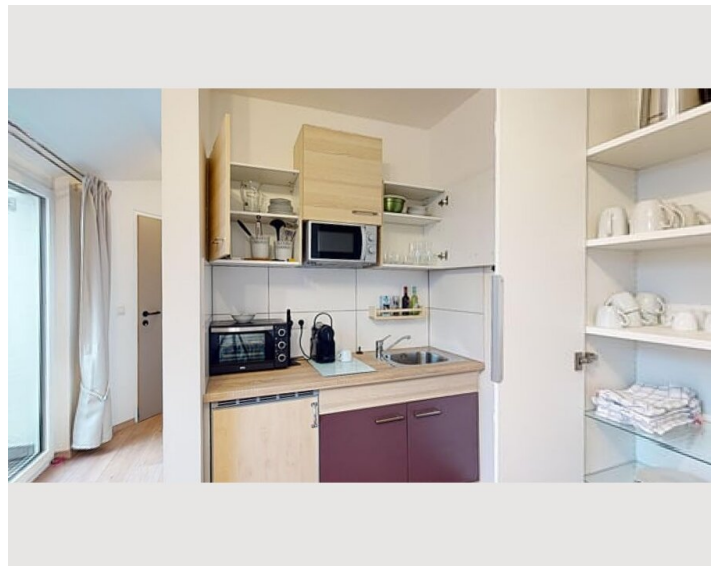
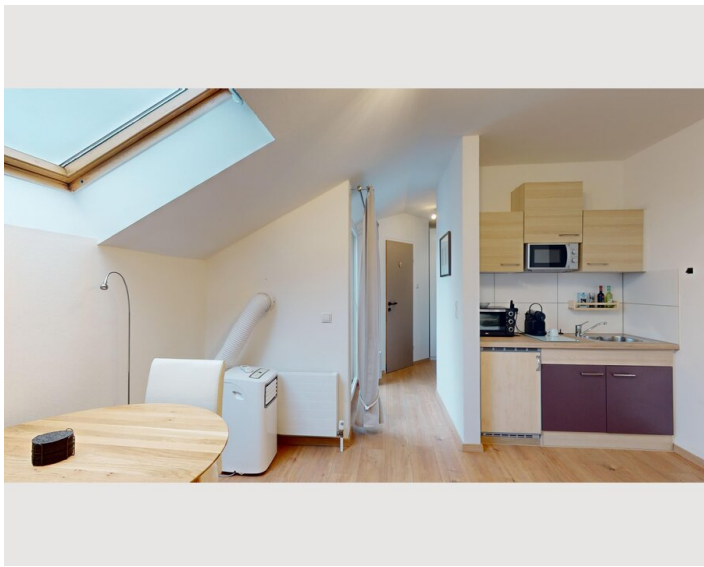
- Private kitchen
- Espresso machine
- Glasses/Tableware
- Microwave

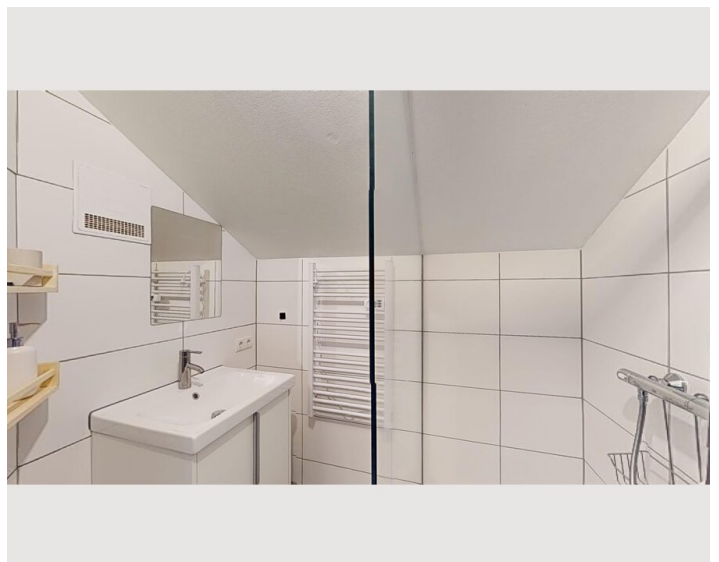
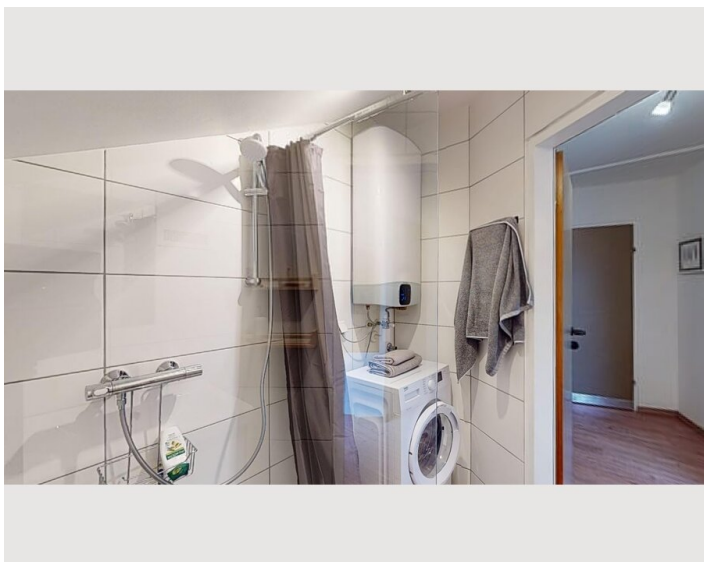
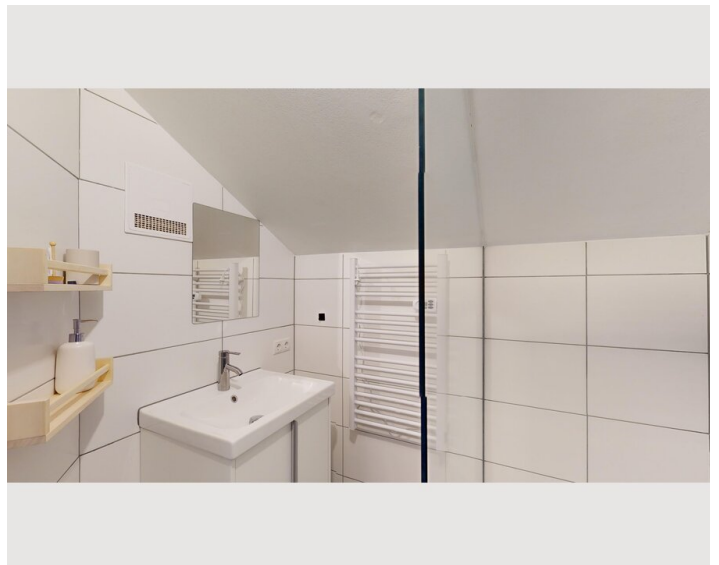
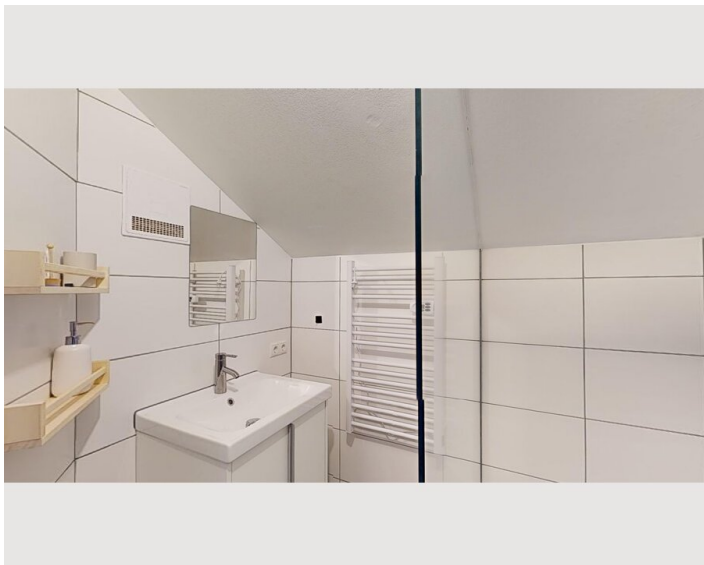
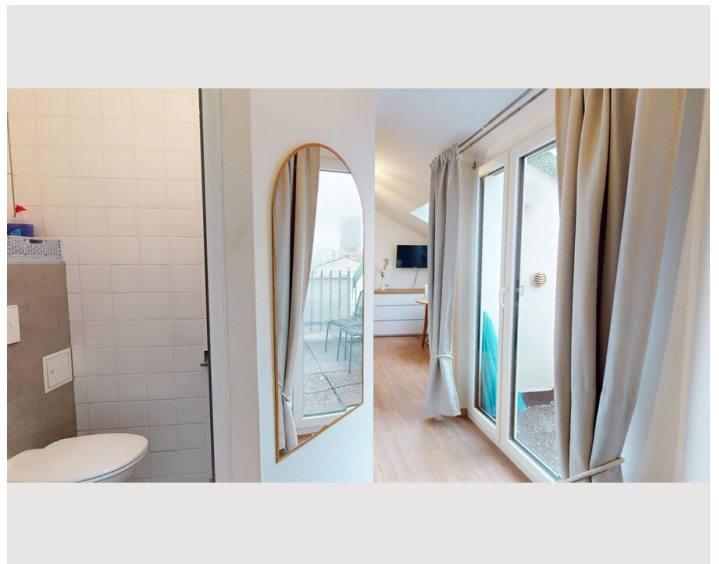
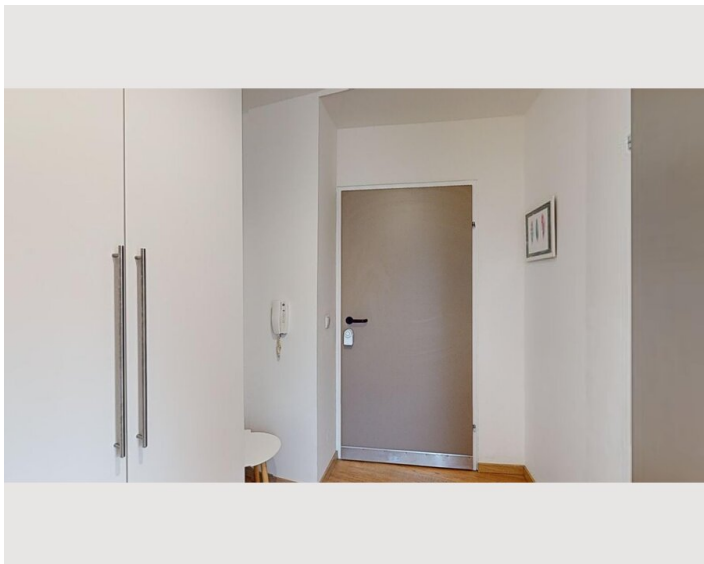
Informations

- Suitable for construction workers
- Smoking not allowed
- Pets on request
- Bicycle room free of charge
- Not suitable for children
- Free short-term parking zone
- Regular cleaning at extra cost

Picture gallery









Infrastructure



The studio apartment is located near Linz main station at the gateway to the Markatviertel. You will also find outdoor parking spaces on Grillparzerstraße and Jungwirthstraße.

Linz is the capital of Upper Austria and, with 211,944 inhabitants, the third largest city in Austria after Vienna and Graz and the center of the country's second largest metropolitan area with 823,514 people. Linz is beautifully situated on the Danube in the heart of Europe. There are many ways to get to know Linz and experience the city's diversity. Take a tour of the city, explore the sights, attend the countless events or enjoy the culinary highlights.

Plenty of shopping opportunities, perfect transport connections, many leisure facilities, museums, cafes & restaurants, Posthof, Design Center, festivals and events

Location

