

2 ZIMMER WOHNUNG, 4810 GMUNDEN

## Traunseeblick 3

Object number: WOLW3

[View and rent online](#)

<b>Period</b>	18/06/ - 18/07/2025
<b>Number of persons</b>	2
<b>Total</b> incl. VAT.	€ 3.809,80
Security deposit	€ 3.000,00

All-round view as far as the eye can see - mountains, lake, city



### Living space

65m<sup>2</sup>



### Maximum occupancy

4 Persons



### Complete accommodation <sup>?</sup>

1 private bathroom 1 Separated bedroom 1 Living-Sleepingroom



### 3. floor



### Check-in

15:00 - 21:30 Clock



### Check-out

05:00 - 11:00 Clock

## Sleeping options

### Sleeping room



1x Double bed (1,60 m x 2 m)

### Living and sleeping



1x Sofa bed (2 persons)

## Descripton of accommodation

Our new holiday flat 'Traunseeblick 3' is located on the 3rd floor (without lift).

Open-plan living with a south-facing balcony (covered) rounds off the cosiness, a new kitchen with cooking island and a dining area, sofa bed, bedroom, separate bathroom and bathroom with shower and toilet and 1 west-facing balcony round off the cosiness of this flat and offer 4 people enough space to feel good, relax and go on holiday.

The holiday flat is just a stone's throw (100m) from Lake Traunsee and is only 1 minute (90m) from the tram stop, which means that nothing stands in the way of a stress-free journey by public transport.

The key box ensures easy arrival and departure. A free car park is available directly at the accommodation.

## Equipment features



### Basic equipment

- Balcony
  - Internet/Wifi
  - Bedclothes
  - Private toilet
  - Aircondition
  - Terrace
  - TV
  - Towels
  - Private parking space
  - Hairdryer
- 



### First supply

- Toilet paper
  - Nespresso capsules
  - Soap
- 



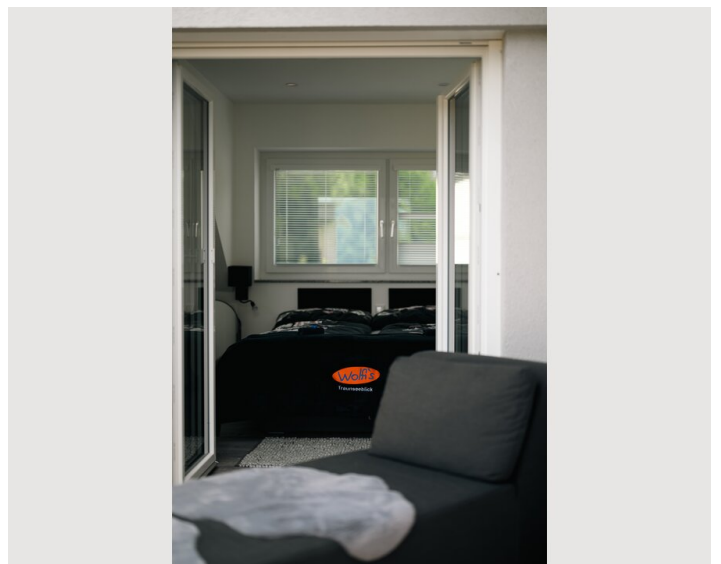
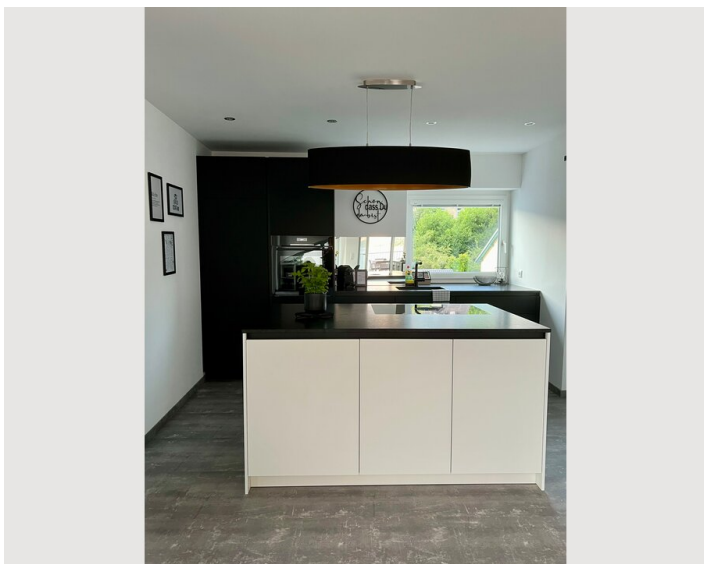
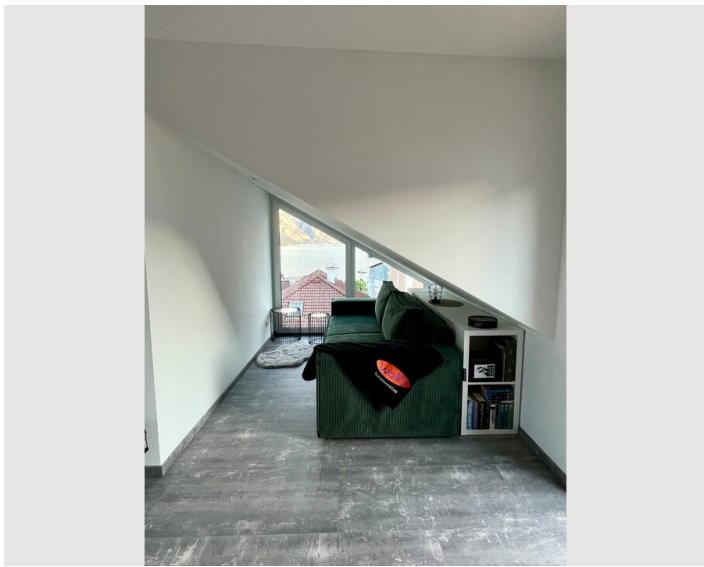
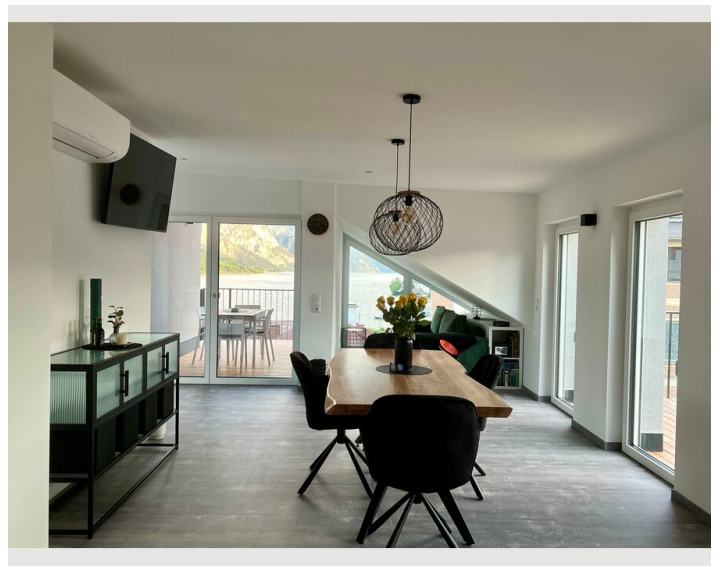
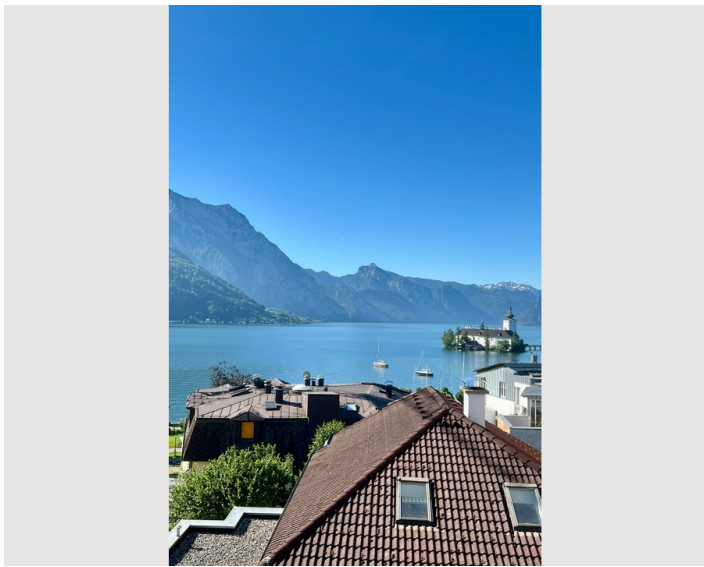
### Kitchen

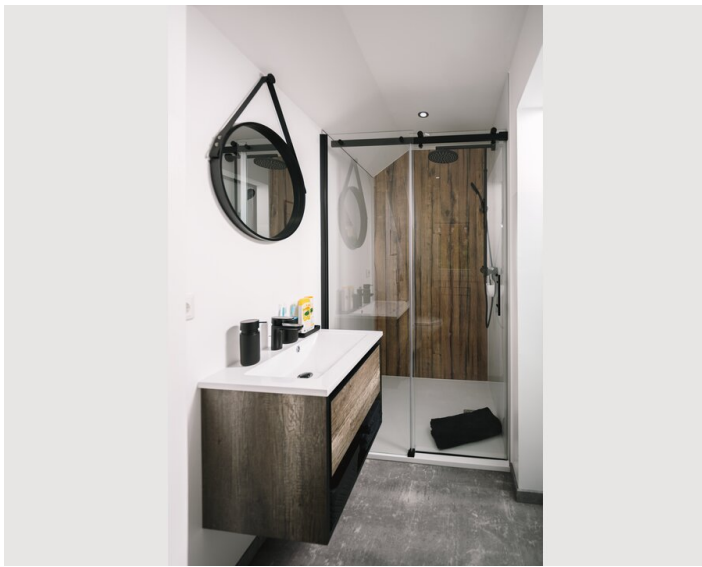
- Private kitchen
- Glasses/Tableware
- Dishwasher
- Cooking utensils
- Espresso machine

## Informations

- Smoking not allowed
- Pets forbidden
- Bicycle room free of charge
- Private entrance
- Regular cleaning free of charge

## Picture gallery





### Infrastructure

📍 Gmunden - centre within 5-10 min. walking distance

🚊 Tram stop within 1 min. walking distance



Gmunden railway station can be reached by tram in 8 minutes or on foot in approx. 25 minutes.

---

On the Esplanade, 100 metres away, you will find shops, cafés and restaurants.

Furthermore, the tram stop is only 1 minute away.

The nearest supermarket (Spar) is only 600 metres away and can be easily reached on foot or by tram.

## Location

