



2 ZIMMER WOHNUNG, 4810 GMUNDEN

## Traunseeblick 4

Object number: WOLL4

[View and rent online](#)

SMALL - FINE - COSY

<b>Period</b>	18/06/ - 18/07/2025
<b>Number of persons</b>	2
<b>Total</b> incl. VAT.	€ 3.527,58
Security deposit	€ 2.800,00



### Living space

52m<sup>2</sup>



### Maximum occupancy

4 Persons



### Complete accommodation <sup>?</sup>

1 private bathroom 1 Separated bedroom 1 Living-Sleepingroom



### 1. floor



### Check-in

15:00 - 21:30 Clock



### Check-out

05:00 - 11:00 Clock

## Sleeping options

### Sleeping room



1x Double bed (1,60 m x 2 m)

### Living and sleeping



1x Sofa bed (2 persons)

## Descripton of accommodation

SMALL - FINE - COSY

Our new holiday flat 'Traunseeblick 4' is located on the 1st mezzanine floor (without lift).

Open-plan living with roof beams and roof windows as well as window balconies round off the cosy atmosphere, a new kitchen with living/dining area with sofa bed and cosy reading corner under the sloping roof, bedroom, separate bathroom and bathroom with shower and WC round off the cosiness of this flat and offer 4 people enough space for a holiday. You can see the lake between the neighbouring houses.

## Equipment features



### Basic equipment

- Internet/Wifi
  - Bedclothes
  - Private toilet
  - Aircondition
  - TV
  - Towels
  - Private parking space
  - Hairdryer
- 



### First supply

- Toilet paper
  - Nespresso capsules
  - Soap
- 



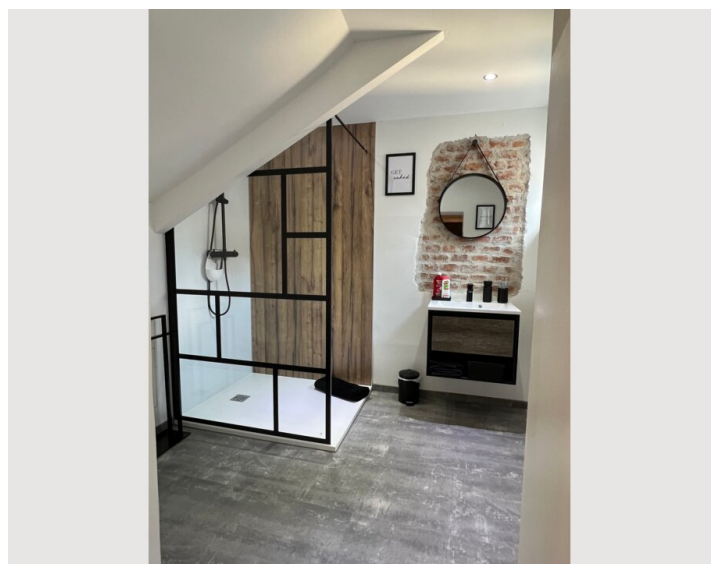
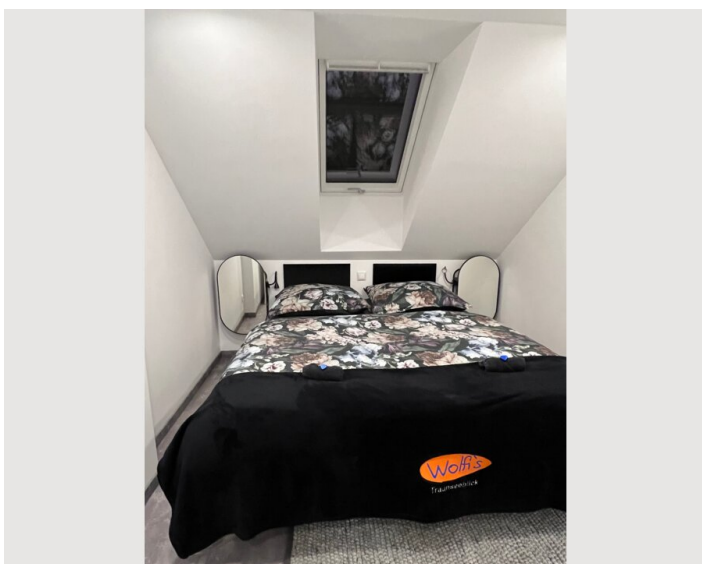
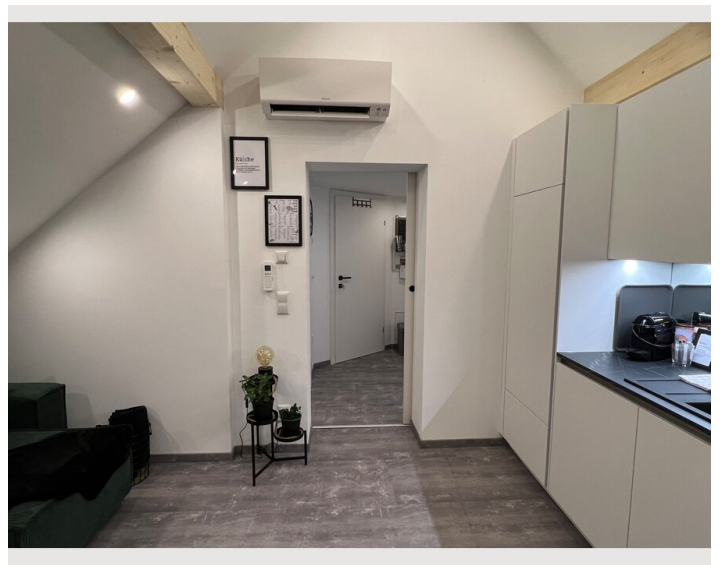
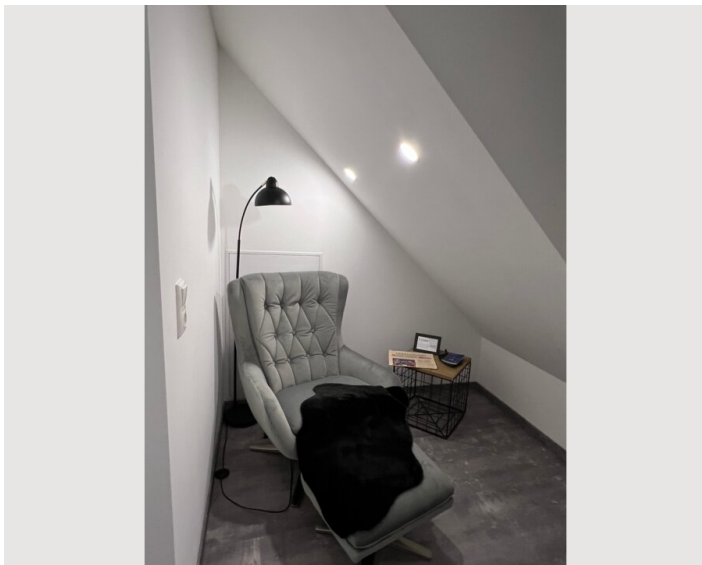
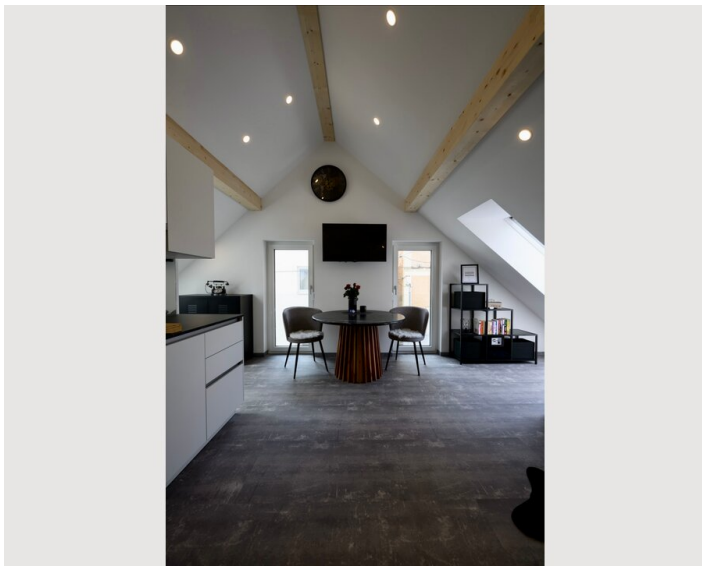
### Kitchen

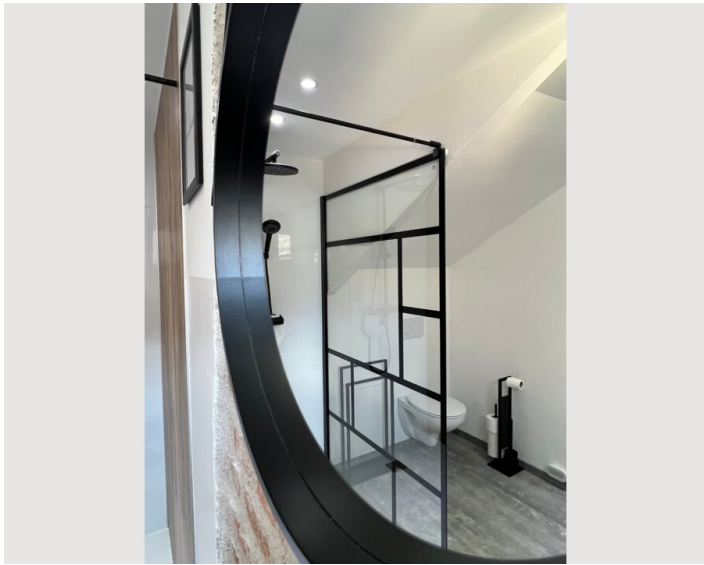
- Private kitchen
- Glasses/Tableware
- Dishwasher
- Cooking utensils
- Espresso machine

## Informations

- Smoking not allowed
- Pets forbidden
- Bicycle room free of charge
- Private entrance
- Regular cleaning free of charge

## Picture gallery





### Infrastructure

📍 Gmunden - centre within 5-10 min. walking distance

🚊 Tram stop within 1 min. walking distance



Gmunden railway station can be reached by tram in 8 minutes or on foot in approx. 25 minutes.

---

On the Esplanade, 100 metres away, you will find shops, cafés and restaurants.

Furthermore, the tram stop is only 1 minute away.

The nearest supermarket (Spar) is only 600 metres away and can be easily reached on foot or by tram.

## Location

