



ROOM, 4810 GMUNDEN

Double room in loft style

Object number: WOLO6

[View and rent online](#)

Period	09/12/2025 - 09/01/2026
Number of persons	2
Total incl. VAT.	€ 2.041,30
Security deposit	€ 1.600,00

Welcome to our new double room. A room with a double bed in loft style with lots of charm and attention to detail awaits you.



Living space

17m²



Maximum occupancy

2 Persons



Complete accommodation [?]

1 Private bathroom 1 Living-Sleepingroom



Ground floor



Check-in

15:00 - 21:30 Clock



Check-out

05:00 - 11:00 Clock

Sleeping options

Living and sleeping



1x Double bed (1,60 m x 2 m)

Descripton of accommodation

SUMMER, SUN, SUNSHINE - We have to go there, there's something going on!

Welcome to our new double room. A room with a loft-style double bed awaits you with plenty of charm and attention to detail.

The new spacious bathroom with rain shower adds a touch of spa at the highest level. A leather armchair with cosy fur gives you the comfort you need to relax. A cosy double bed gives you a good night's rest for a peaceful, relaxing sleep. The key box ensures a stress-free arrival and departure. A car park is available free of charge during your stay.

Equipment & Features



Basic equipment

- Terrace
- TV
- Towels
- Private parking space
- Hairdryer
- Internet/Wifi
- Bedclothes
- Private toilet
- Aircondition



First supply

- Toilet paper
- Nespresso capsules
- Soap



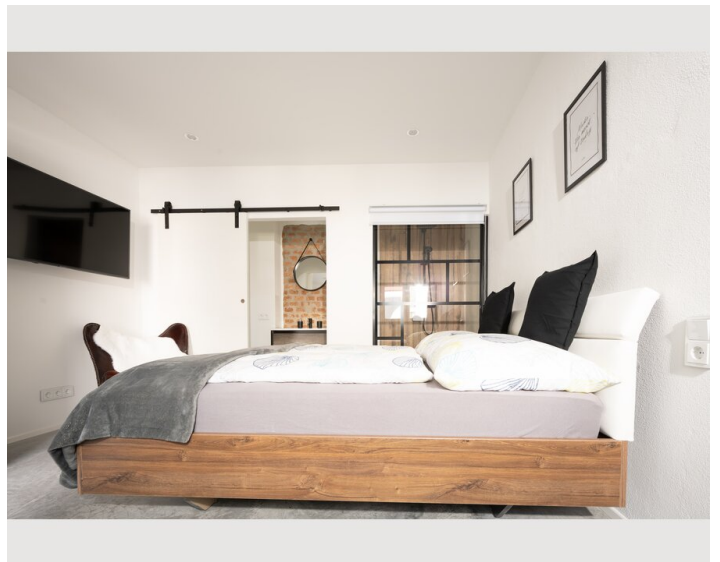
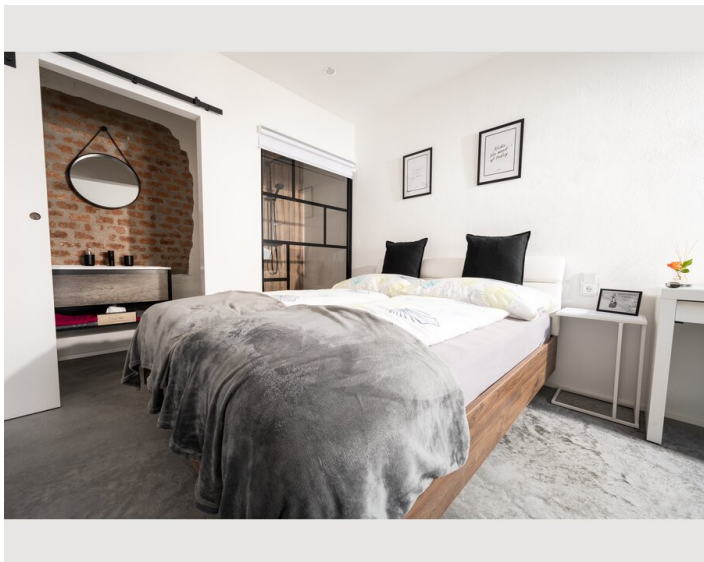
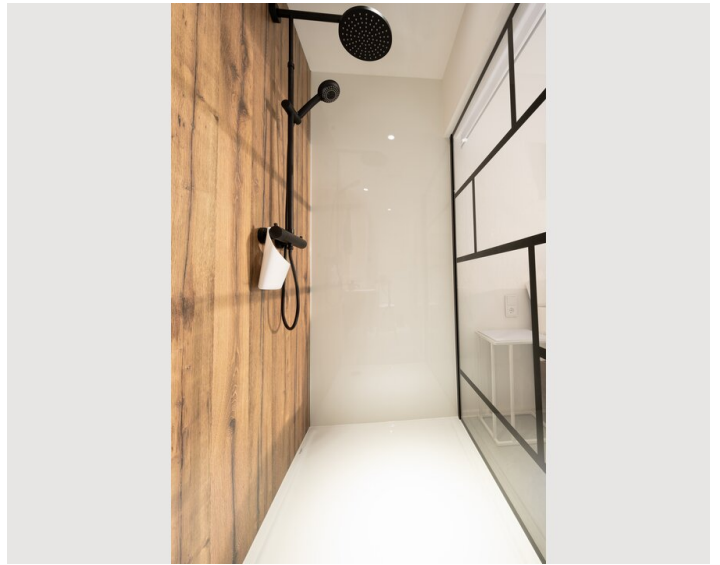
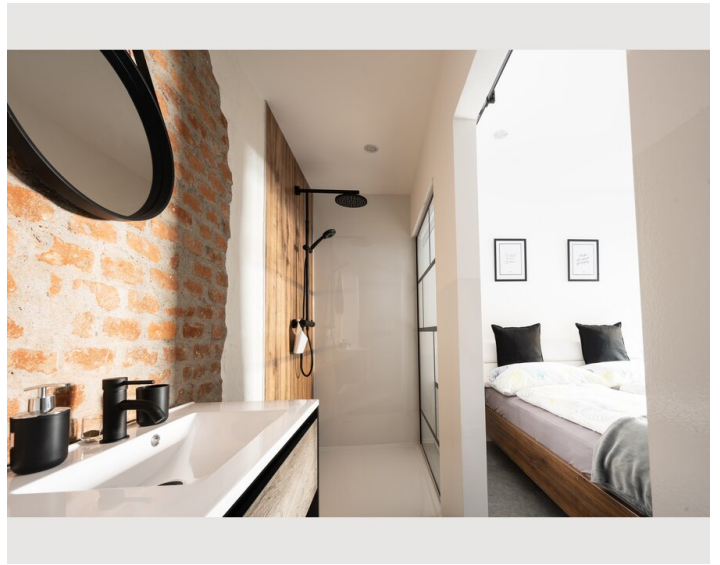
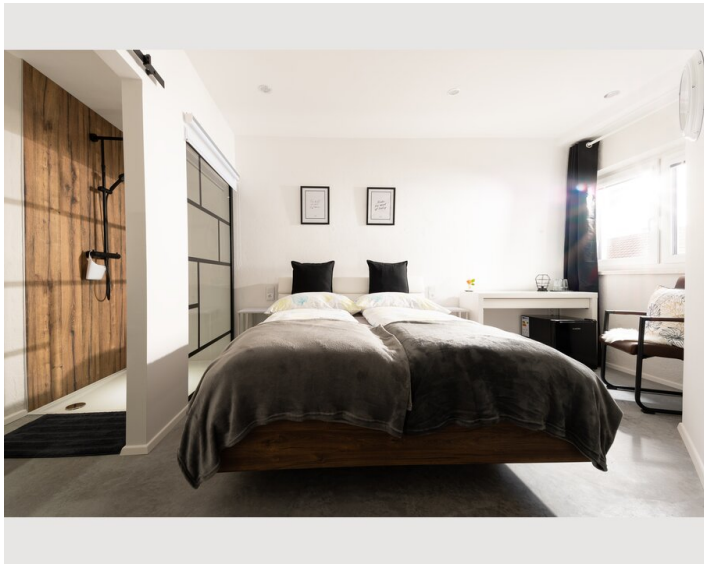
Kitchen

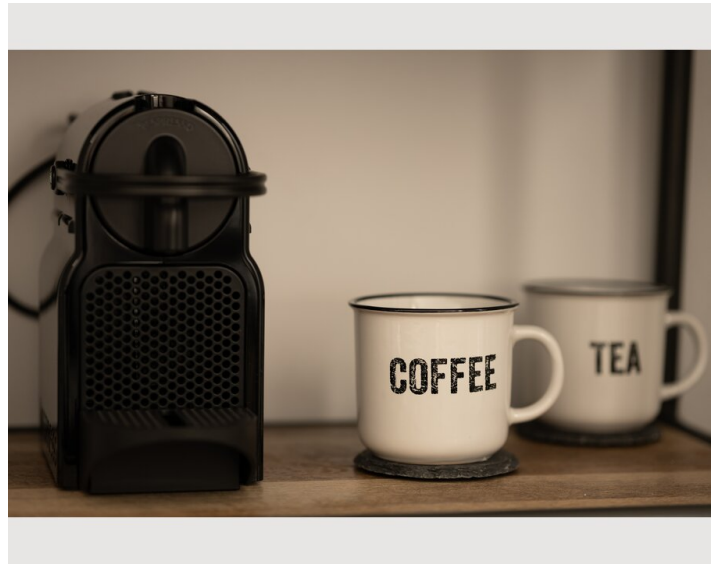
- Glasses/Tableware
- Espresso machine

Informations

- Smoking not allowed
- Private entrance
- Regular cleaning free of charge
- Desk/Workplace
- Pets forbidden
- Bicycle room free of charge

Picture gallery





Infrastructure

📍 Gmunden - centre within 5-10 min. walking distance

🚊 Tram stop within 1 min. walking distance

🚆 Gmunden railway station can be reached by tram in 8 minutes or on foot in approx. 25 minutes.

On the Esplanade, 100 metres away, you will find shops, cafés and restaurants.

Furthermore, the tram stop is only 1 minute away.

The nearest supermarket (Spar) is only 600 metres away and can be easily reached on foot or by tram.

Location

