

3 ROOM APARTMENT, 1010 VIENNA

## City retreat 1010 Vienna

Object number: QOER1

[View and rent online](#)

<b>Period</b>	17/01/ - 17/02/2026
<b>Number of persons</b>	2
<b>Total</b> incl. VAT.	€ 2.247,10
Security deposit	€ 1.700,00

Welcome to Stadttrefugium 1010 Vienna! Inner-city flair at its best, in absolute tranquility, right next to Vienna's St. Stephen's Cathedral. Living in the heart of the city!



### Living space

47m<sup>2</sup>



### Maximum occupancy

4 Persons



### Complete accommodation <sup>?</sup>

1 Private bathroom 1 Separated bedroom 1 Living-Sleepingroom



### 2. floor

Elevator available



### Check-in

13:00 - 21:00 Clock



### Check-out

06:00 - 11:00 Clock

## Sleeping options

### Sleeping room



1x Double bed (1,60 m x 2 m)

### Living & Sleeping



1x Double bed (1,80 m x 2 m)

## Descripton of accommodation

The top renovated old apartment building is located on the 2nd floor (with elevator) in a small quiet street, only a 3-minute walk from Stephansplatz.

It extends over 47m<sup>2</sup> with exclusively courtyard-facing windows along a corridor and is divided into:

- 1 anteroom
- 1 bathroom/WC
- 1 kitchen/dining area
- 1 bedroom/study (cannot be locked)
- 1 bedroom & living room

## Equipment & Features



### Basic equipment

- Internet/Wifi
  - Bedclothes
  - Private toilet
  - Cleaning utensils
  - TV
  - Towels
  - Vacuum cleaner
  - Hairdryer
- 



### First supply

- Toilet paper
  - Soap
  - shampoo
- 



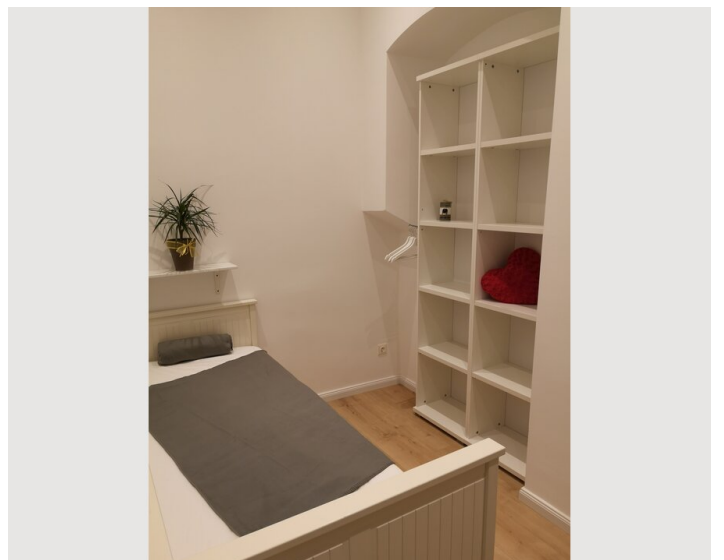
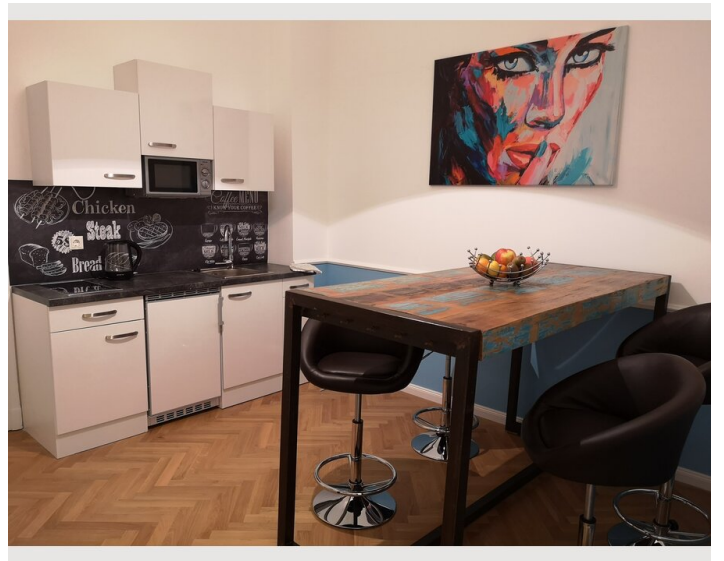
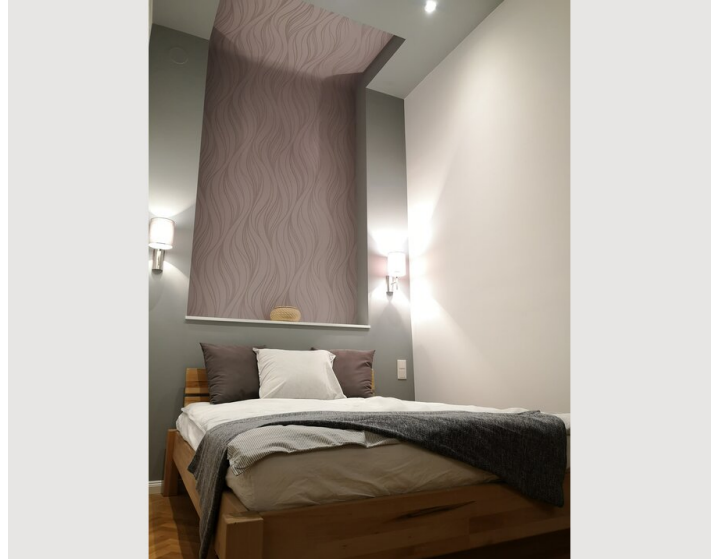
### Kitchen

- Private kitchen
- Glasses/Tableware
- Microwave
- Cooking utensils
- Filter coffee

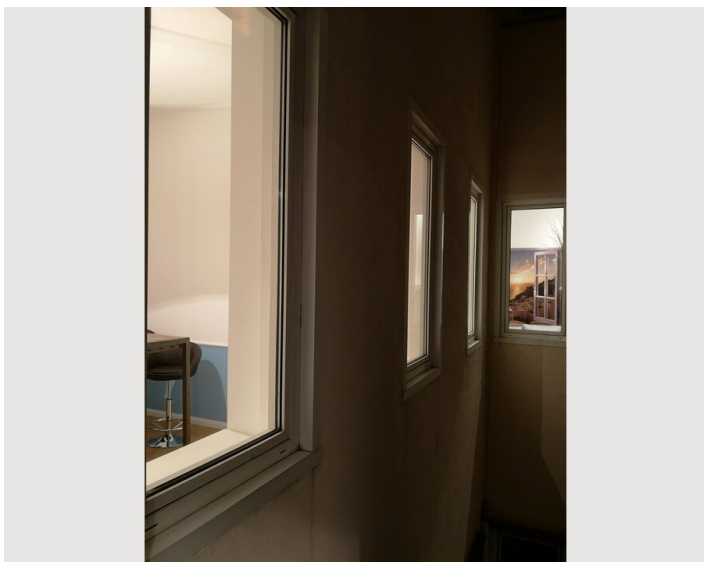
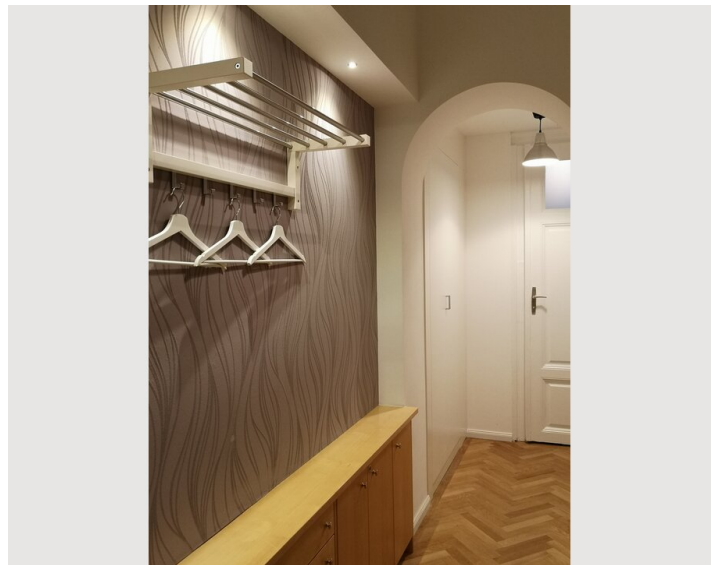
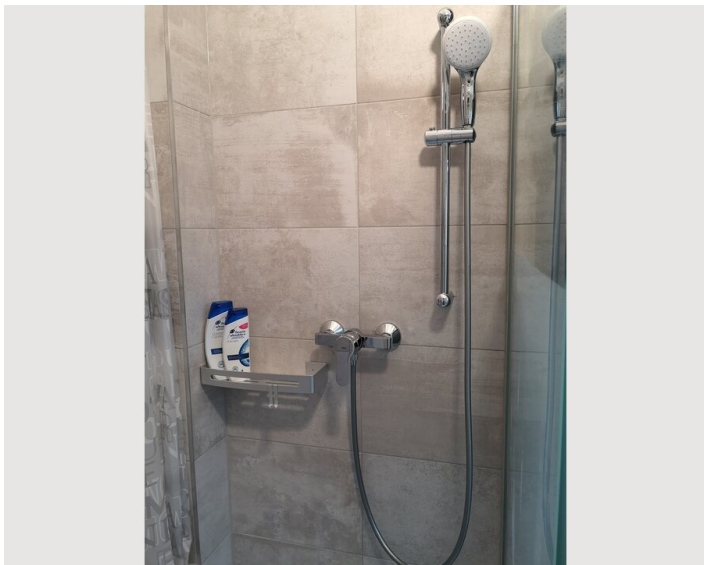
## Informations

- Suitable for construction workers
- Smoking not allowed
- Private entrance
- Regular cleaning at extra cost
- Suitable for children
- Short-term parking zone subject to a charge
- Pets on request

## Picture gallery







### Infrastructure

- 📍 The apartment is located in the heart of the city
- 🛒 Supermarket & bakery in only 5 minutes walking distance
- 🚶 The stations Stephansplatz & Landstraße Vienna Central only few minutes walk away
- 🚆 Directly accessible by City Airport Train (CAT) from Landstraße Vienna Central

---

Stadtrefigium 1010 offers all the advantages of a super centrally located city center apartment. Among other things, it provides ideal connections to all public means of transport (subway station & bus stop Stephansplatz just a 3-minute walk away), and is surrounded by famous restaurants, cafés, bars and of course supermarkets & numerous stores in the immediate vicinity.

At the same time, you can also find peace and relaxation here after a long day at work.

Vienna is a city of connoisseurs - and we have the right apartment for you to become one of them!

Location

