



HOUSE, 7301 DEUTSCHKREUTZ

CAMPANELL - The holiday home in Blaufränkischland

Object number: QLRJ1

[View and rent online](#)

CAMPANELL - The holiday home in Blaufränkischland you will not find rooms or apartments, but an entire house with a garden for your exclusive use, which offers you all the freedom you could wish.

Period	26/06/ - 26/07/2026
Number of persons	2
Total incl. VAT.	€ 2.743,80
Security deposit	€ 2.200,00



Living space

110m²



Maximum occupancy

5 Persons



Complete accommodation [?]

1 Private bathroom 2 Separated bedrooms 1 Living-Sleepingroom



1. floor



Check-in

15:00 - 20:00 Clock



Check-out

08:30 - 11:00 Clock

Sleeping options

Bedroom 1



1x Double bed (1,80 m x 2 m)



1x Children/baby bed

Bedroom 2



1x Double bed (1,80 m x 2 m)

Living & Sleeping



1x Sofa bed (1 person)

Descripton of accommodation

You will live stylishly, comfortably, centrally and, above all, sustainably in our holiday home, a particularly exclusive living oasis that creates a modern feel-good atmosphere.

Our holiday home is equipped with everything you need for a relaxing stay. It has a fully equipped kitchen, cozy living areas and comfortable bedrooms. The garden invites you to relax and sunbathe and offers you enough space for outdoor activities.

Whether you are traveling with your family or friends, our holiday home offers you enough space and privacy for unforgettable moments together. Spend cozy evenings in the garden or explore the surrounding area on long walks and bike rides.

The holiday home is rated in the highest category - 4 suns.

Book your stay at CAMPANELL now – the holiday home in Blaifränkischland and experience an unforgettable holiday in a dreamlike environment.

We look forward to welcoming you!

Equipment & Features



Basic equipment

- Garden
- Music system/docking station
- Private washing machine
- Towels
- Parking on the road without time limit without any cost
- Iron & ironing board
- Hairdryer
- Internet/Wifi
- TV
- Bedclothes
- Private toilet
- Aircondition
- Cleaning utensils



First supply

- Toilet paper
- Soap
- Fridge filling on request
- shampoo
- Nespresso capsules



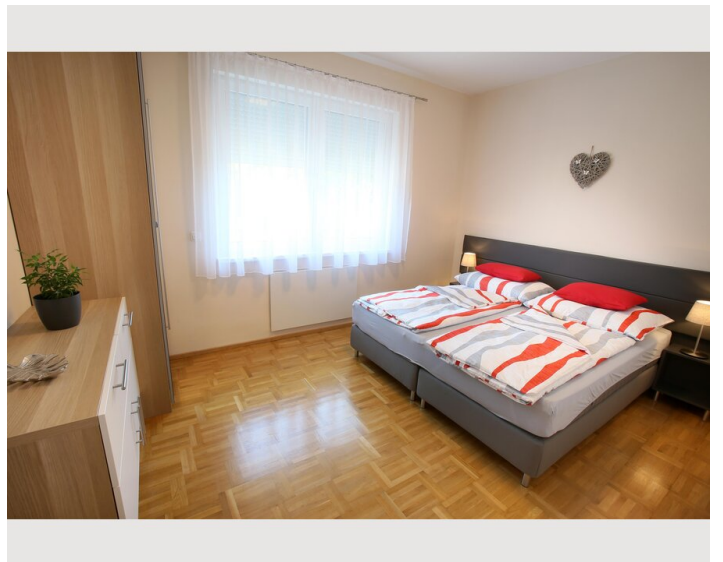
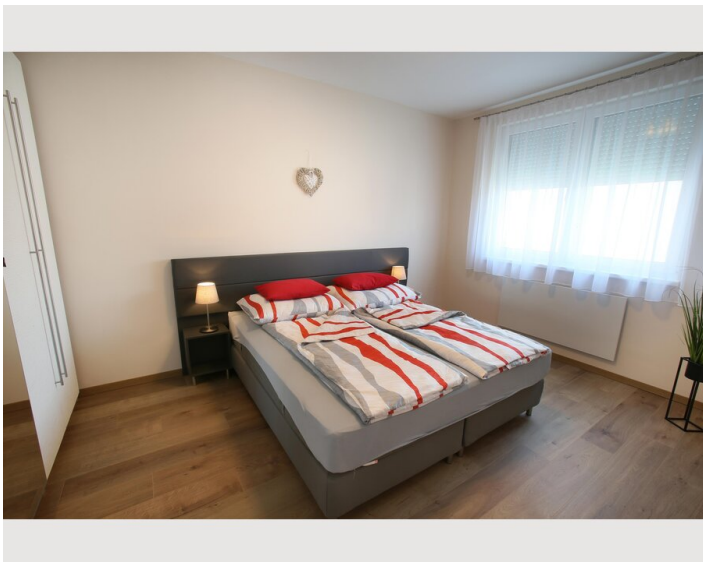
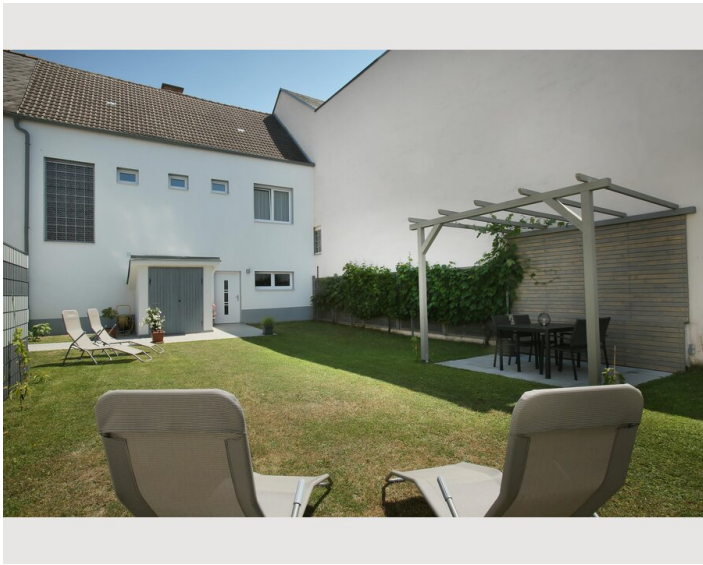
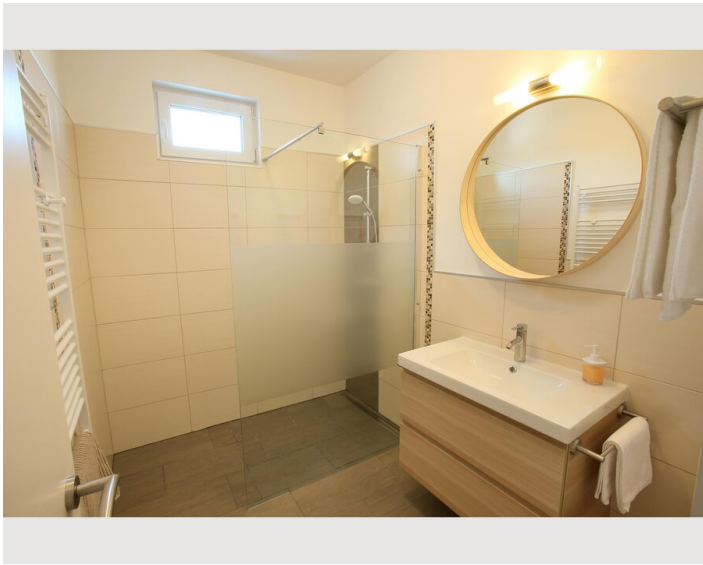
Kitchen

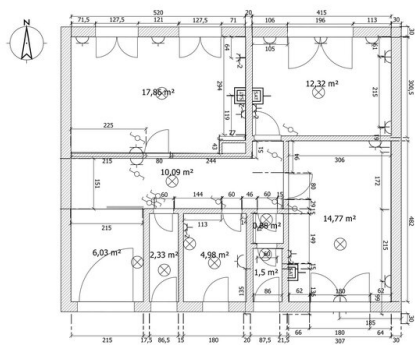
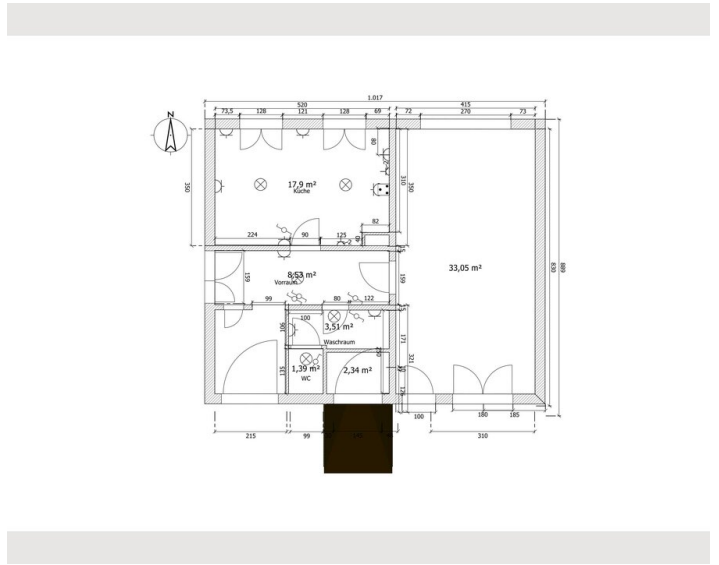
- Private kitchen
- Glasses/Tableware
- Dishwasher
- Cooking utensils
- Espresso machine

Informations

- Smoking not allowed
- Private entrance
- Regular cleaning at extra cost
- Free short-term parking zone
- Pets forbidden
- Bicycle room free of charge


Picture gallery






Infrastructure

 800 m

 350 m

 10 m

 70 km VIE (Vienna)

Our holiday home - "CAMPANELL - The holiday home in Blaufränkischland" - is located in the center of Deutschkreutz - the center of Blaufränkischland. Deutschkreutz is located in central Burgenland, about 1 hour's drive from Vienna and about 1.5 hours' drive from Graz.

Our holiday home is located in the middle of the town centre. In the immediate vicinity you will find an inn (20 m), a bakery (60 m), an organic wholefood bakery (80 m - also open on Sunday mornings), a butcher (10 m), two wine shops (10 to 15 m), a pizzeria (80 m), a café (40 m), a bookshop (60 m), a tobacconist (60 m) and two hairdressing salons (50 and 100 m respectively). The Lehmden church is also right next door. A supermarket, pharmacy and two beauty salons are a five-minute walk away.

In the village you will find several wine taverns and a restaurant, the public swimming pool is only 2 kilometers away.

Deutschkreutz is surrounded by vineyards and forests that can be explored by bike or on foot. In the immediate vicinity you will find a connection to the cycle path network of the Blaufränkischland region.

Art and culture lovers will get their money's worth thanks to the proximity to the Liszt Festival Raiding and the Kobersdorf Castle Festival, as will active sports enthusiasts and those seeking relaxation thanks to the diverse range of activities and the wonderful landscape around the market town of Deutschkreutz in Blaufränkischland - our holiday home Campanell is definitely the ideal starting point for all activities!

Location

