



3 ROOM APARTMENT, 5202 NEUMARKT

Charming Garden Apartment near Lake of Wallersee

Object number: ZQLG1

[View and rent online](#)

Charming garden apartment near lake Wallersee

Period	24/09/ - 24/10/2025
Number of persons	2
Total incl. VAT.	€ 1.580,69
Security deposit	€ 1.200,00



Living space

85m²



Maximum occupancy

4 Persons



Complete accommodation [?]

2 Private bathrooms 2 Separated bedrooms



Ground floor



Check-in

08:00 - 22:00 Clock



Check-out

08:00 - 20:00 Clock

Sleeping options

Bedroom 1



1x Double bed (1,60 m x 2 m)

Bedroom 2



1x Double bed (1,60 m x 2 m)

Descripton of accommodation

You like it to have a quiet, cosy apartment but also it's important for you to be quick in the town of Salzburg, perfect, you found it now!

Our apartment it's equipped with a nice Kitchen-Living Part, 2 big Bedrooms with own bathrooms and toilets, and also a separate Toilet for guests.

This Apartment is located in the middle of a garden like a park, you will reach all important Facilities, Supermarket, Pharmacy, Doctor, Bus and Train in few minutes per feed.

Also you have to walk only few minutes to reach the Lake of Wallersee.

Equipment & Features



Basic equipment

- Garden
- Music system/docking station
- Community washing machine
- Bedclothes
- Private toilet
- Vacuum cleaner
- Internet/Wifi
- TV
- Community dryer
- Towels
- Private parking space
- Cleaning utensils



Fireplace

- Tiled stove



First supply

- Toilet paper
- Soap
- Fridge filling on request
- shampoo
- Nespresso capsules



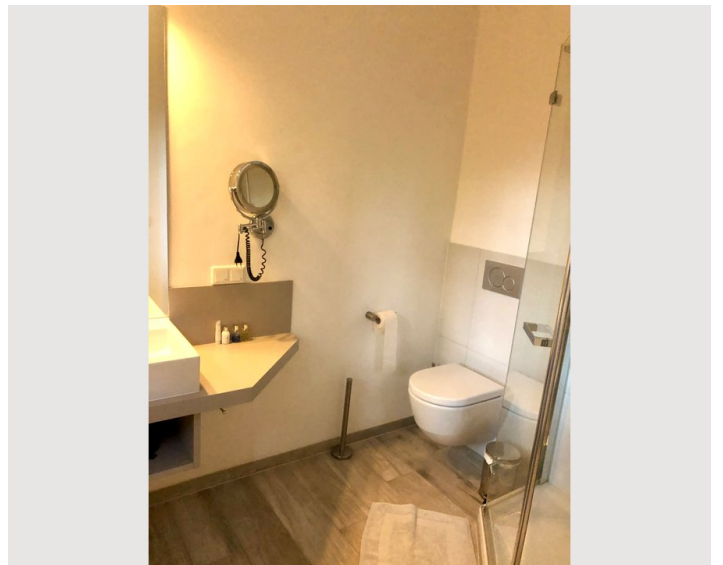
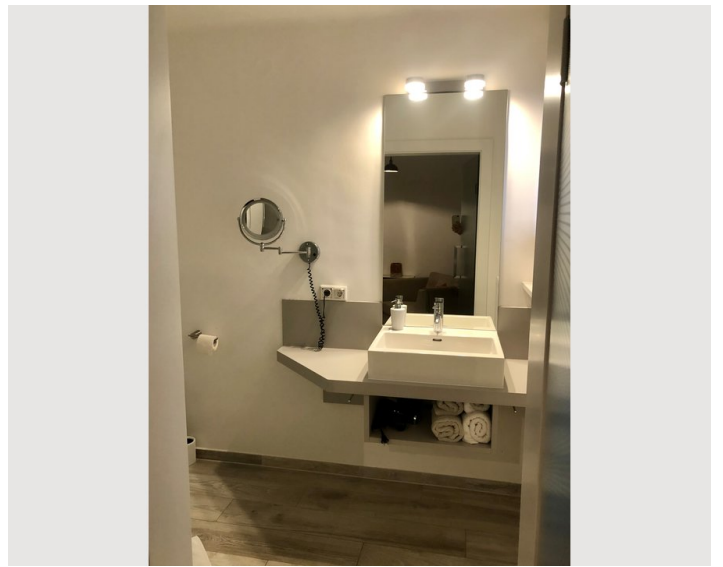
Kitchen

- Private kitchen
- Glasses/Tableware
- Dishwasher
- Cooking utensils
- Espresso machine

Informations


- Suitable for construction workers
- Smoking not allowed
- Private entrance
- Regular cleaning at extra cost
- Suitable for children
- Free short-term parking zone
- Pets on request
- Bicycle room free of charge

Picture gallery





Infrastructure

 +43 6769407121

You will reach all important Facilities, Supermarket, Pharmacy, Doctor, Bus and Train in few minutes per feed. Also you have to walk only few minutes to reach the Lake of Wallersee.

Location

