



STUDIO APARTMENT, 4600 WELS

## Cozy apartment next to train station

Object number: SQCP1

[View and rent online](#)

Cozy, newly renovated apartment next to train station

<b>Period</b>	27/04/ - 27/05/2026
<b>Number of persons</b>	2
<b>Total incl. VAT.</b>	€ 1.501,04
<b>Security deposit</b>	€ 1.100,00



### Living space

42m<sup>2</sup>



### Maximum occupancy

2 Persons



### Complete accommodation <sup>?</sup>

1 Private bathroom 1 Living-Sleepingroom



### 6. floor

Elevator available



### Check-in

12:00 - 22:00 Clock



### Check-out

08:00 - 11:00 Clock

## Sleeping options

### Living & Sleeping



1x Double bed (1,40 m x 2 m)

## Descripton of accommodation

Welcome to our newly renovated apartment in Wels, just a short walk from the train station! This modern and cozy space accommodates 2 guests and is perfect for travelers seeking comfort and a central location. With a fully equipped kitchen, Wi-Fi, and stylish interiors, your stay in Wels will be a delight. Explore the city easily on foot or by public transport – the perfect base for business or leisure!

## Equipment & Features



### Basic equipment

- Internet/Wifi
- Bedclothes
- Private toilet
- Vacuum cleaner
- Hairdryer
- TV
- Towels
- Parking on the road without time limit without any cost
- Cleaning utensils



### First supply

- Toilet paper
- Soap
- Fridge filling on request
- shampoo
- Nespresso capsules



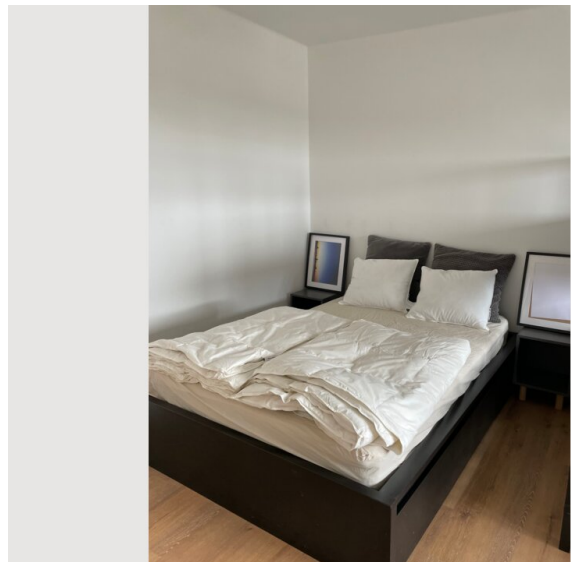
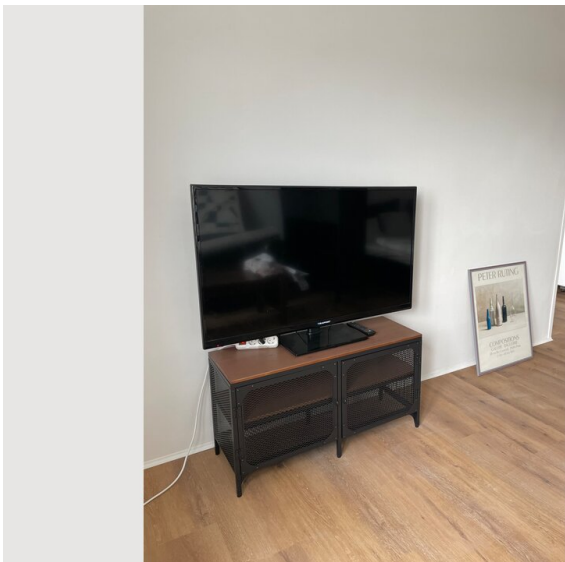
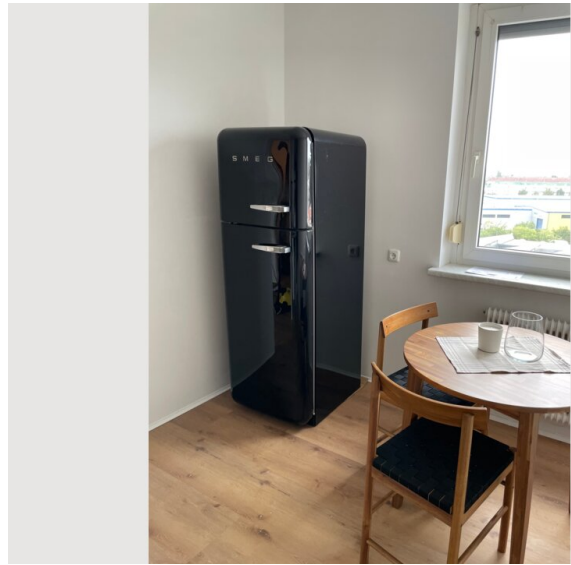
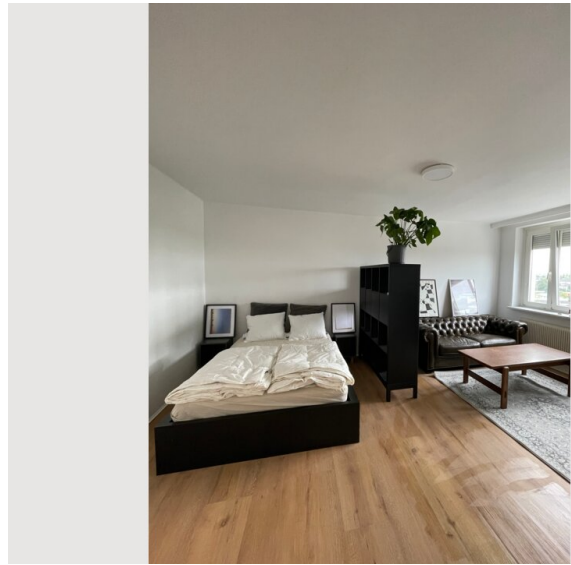
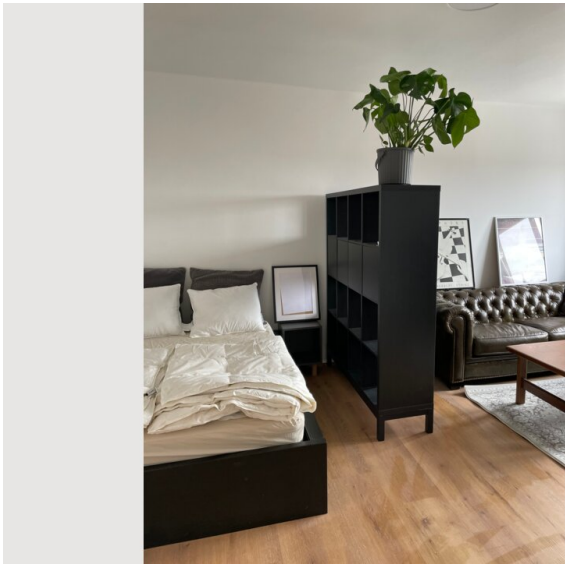
### Kitchen

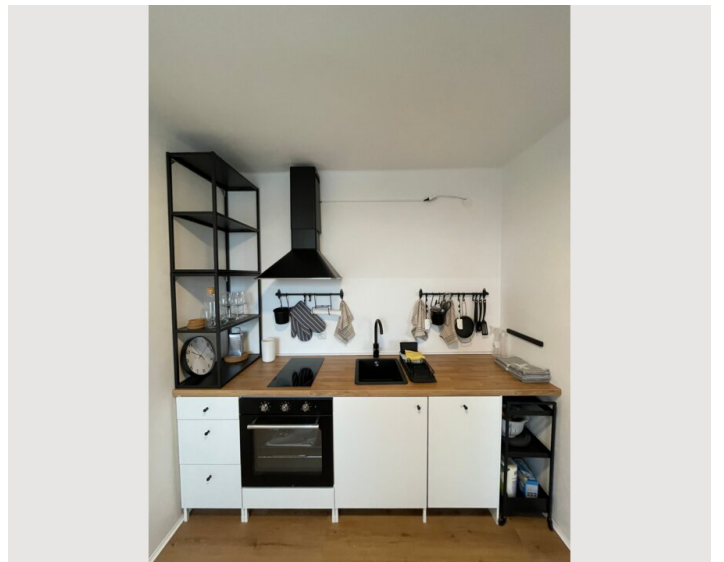
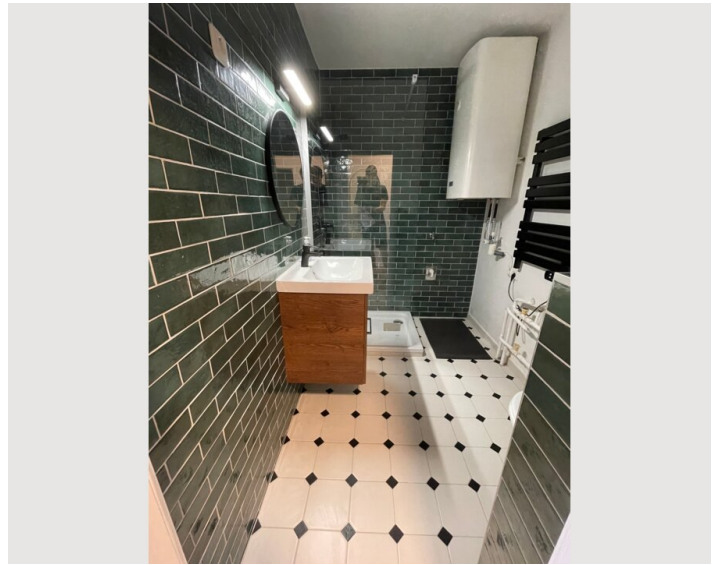
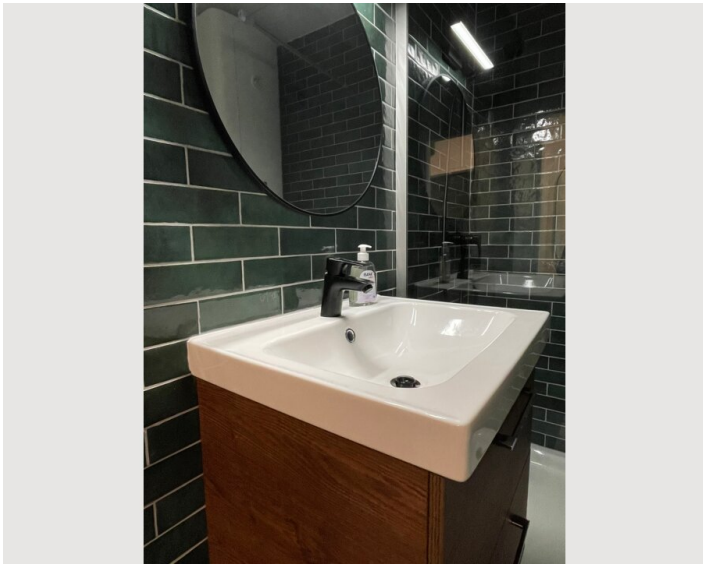
- Private kitchen
- Glasses/Tableware
- Dishwasher
- Cooking utensils
- Espresso machine

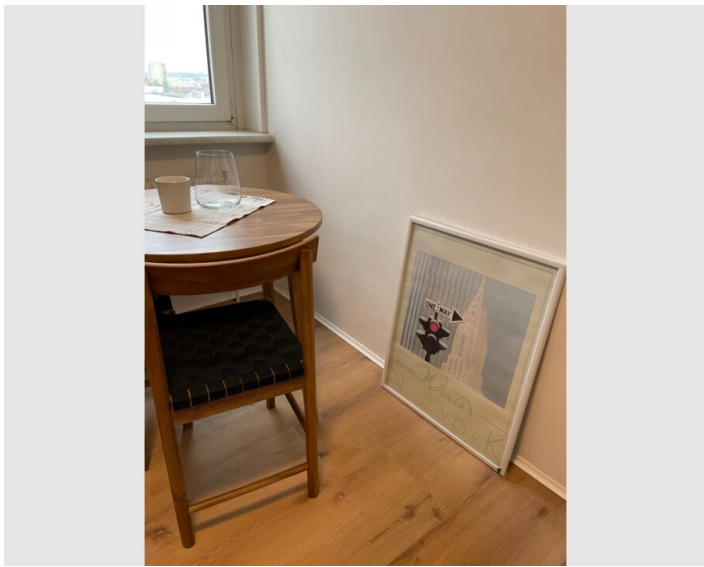
## Informations

- Suitable for construction workers
- Smoking not allowed
- Desk/Workplace
- Regular cleaning at extra cost
- Suitable for children
- Free short-term parking zone
- Pets forbidden

## Picture gallery







### Infrastructure

 By foot

---

Supermarket and public transport nearby

## Location

