



2 ZIMMER WOHNUNG, 8990 BAD AUSSEE

## Modern apartment in the countryside

Object number: STAB2

[View and rent online](#)

Apartment on a farm in a quiet south-facing location that impresses with its modern, stylish furnishings and enchanting view of the Dachstein glacier

|                          |                     |
|--------------------------|---------------------|
| <b>Period</b>            | 10/07/ - 10/08/2025 |
| <b>Number of persons</b> | 2                   |
| <b>Total incl. VAT.</b>  | € 2.680,30          |
| <b>Security deposit</b>  | € 2.000,00          |



### Living space

55m<sup>2</sup>



### Maximum occupancy

2 Persons



### Complete accommodation <sup>?</sup>

1 private bathroom 1 Separated bedroom



### 1. floor



### Check-in

15:00 - 19:00 Clock



### Check-out

08:00 - 10:00 Clock

## Sleeping options

### Sleeping room



1x Double bed (1,80 m x 2 m)

## Descripton of accommodation

The apartment has a spacious living and dining room, which offers plenty of natural light through a double-leaf balcony door and provides direct access to the roof terrace. Here you can enjoy the view of the surrounding meadows and experience nature to the full. The kitchen is fully equipped and offers all the amenities you need for everyday life. The bathroom is modern, with a walk-in shower. The apartment has a private entrance and a private staircase (integrated into the apartment). The quiet location of the farm allows for a relaxed living atmosphere, while shopping facilities and the infrastructure of the region are easily accessible. The apartment is particularly suitable for people who appreciate the tranquillity of country life and are looking for modern living quality at the same time.

## Equipment & Features



### Basic equipment

- Roof-terrace
- Internet/Wifi
- Community washing machine
- Bedclothes
- Private toilet
- Vacuum cleaner
- Hairdryer
- Garden sharing
- TV
- Community dryer
- Towels
- Private parking space
- Iron & ironing board



### First supply

- Toilet paper
- Soap



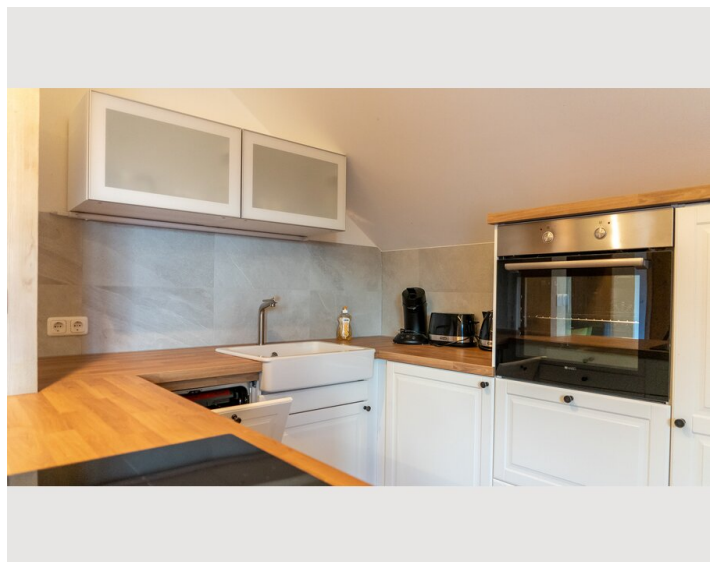
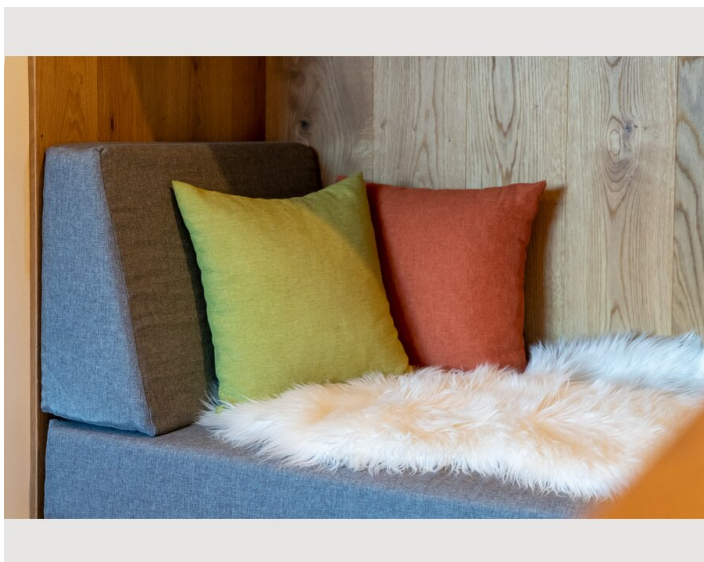
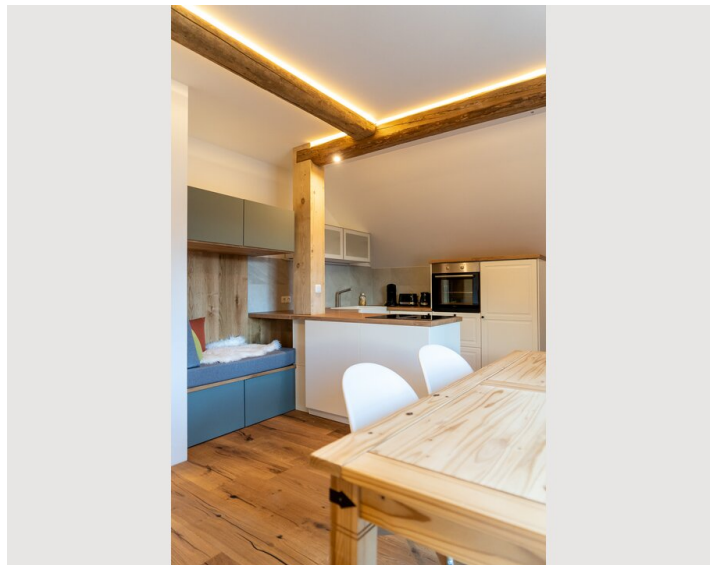
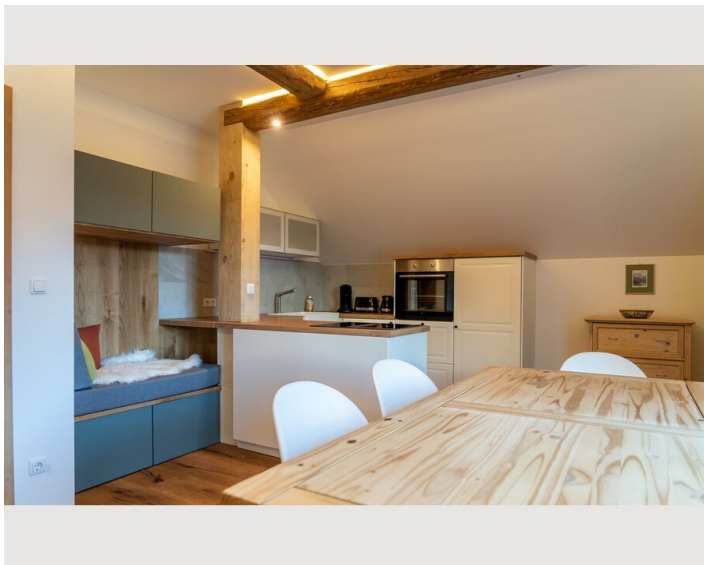
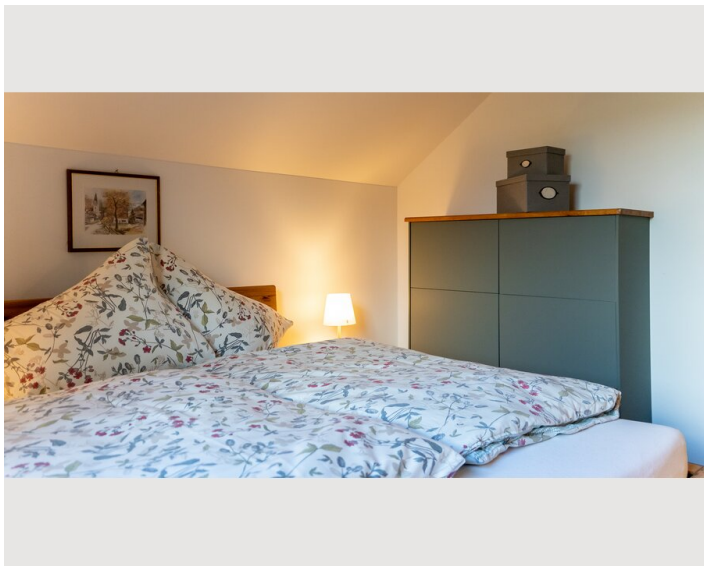
### Kitchen

- Private kitchen
- Glasses/Tableware
- Dishwasher
- Cooking utensils
- Filter coffee

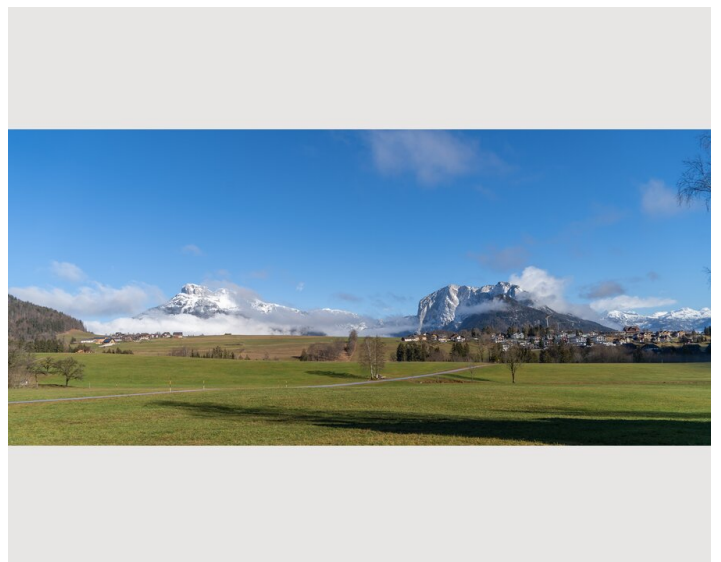
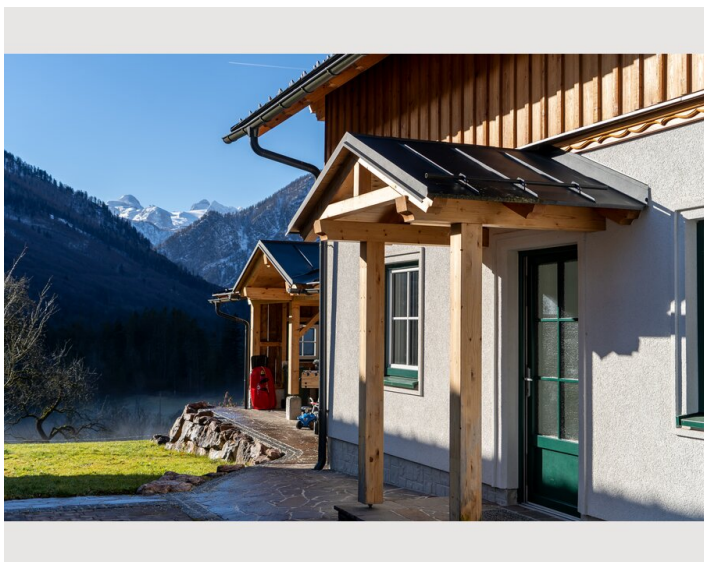
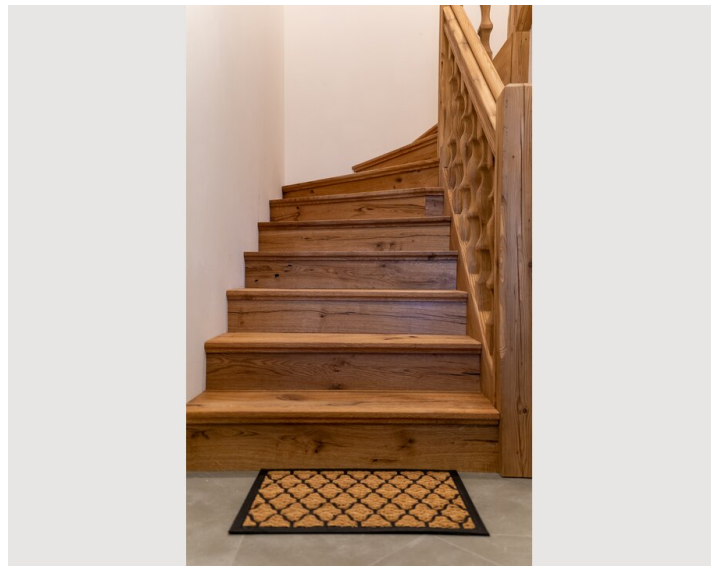
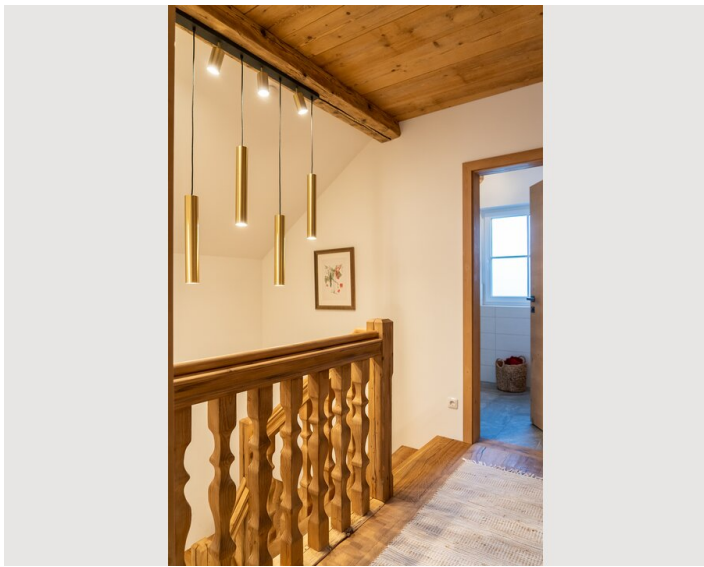
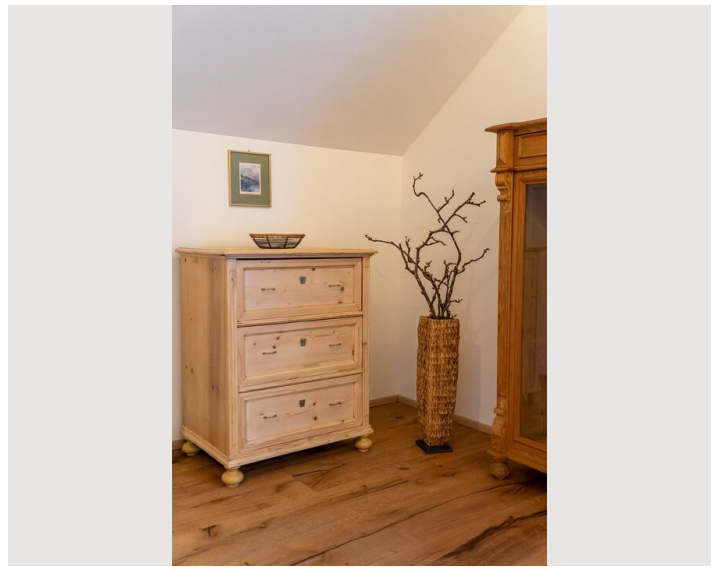
## Informations

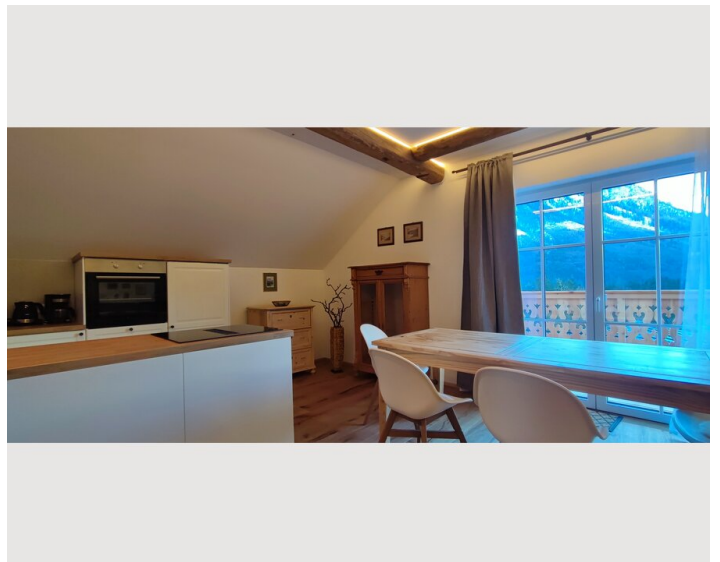
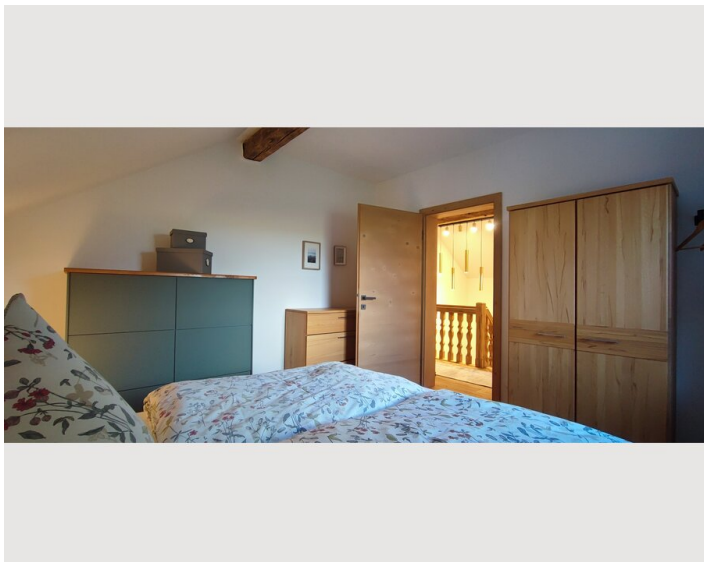
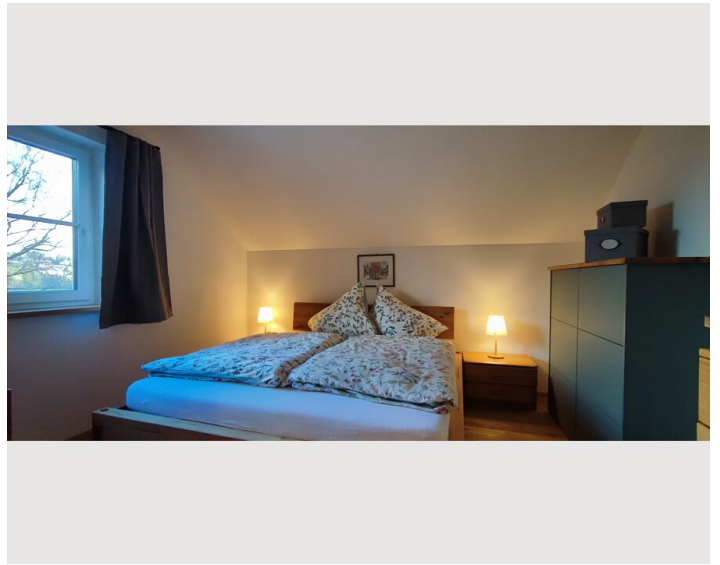
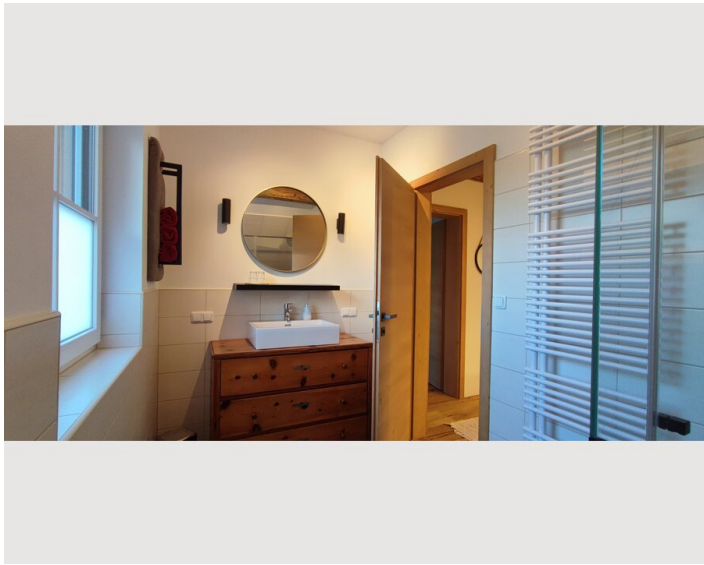
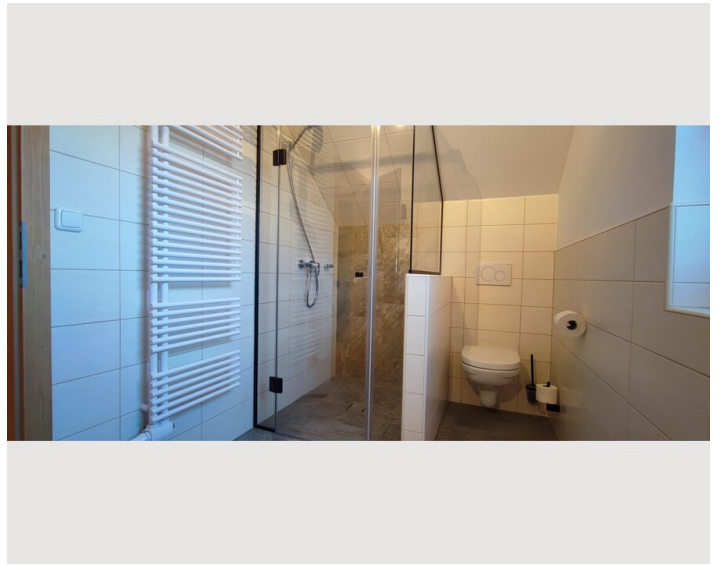
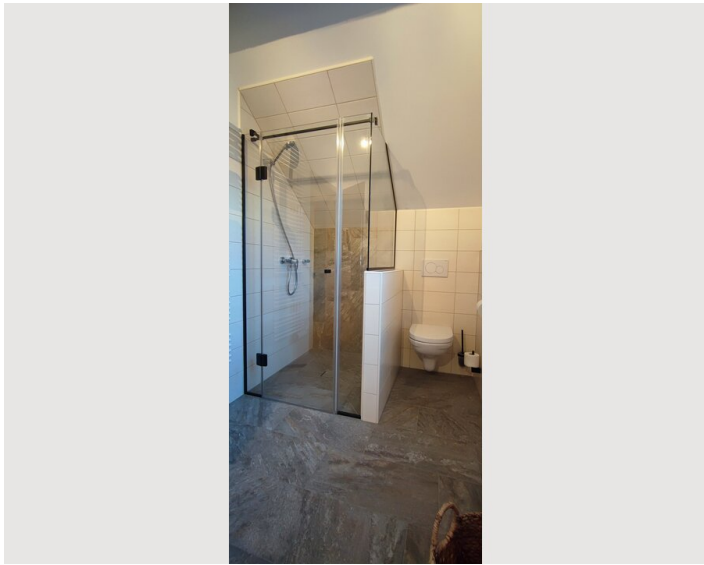
- Smoking not allowed
- Pets forbidden
- Private entrance

## Picture gallery

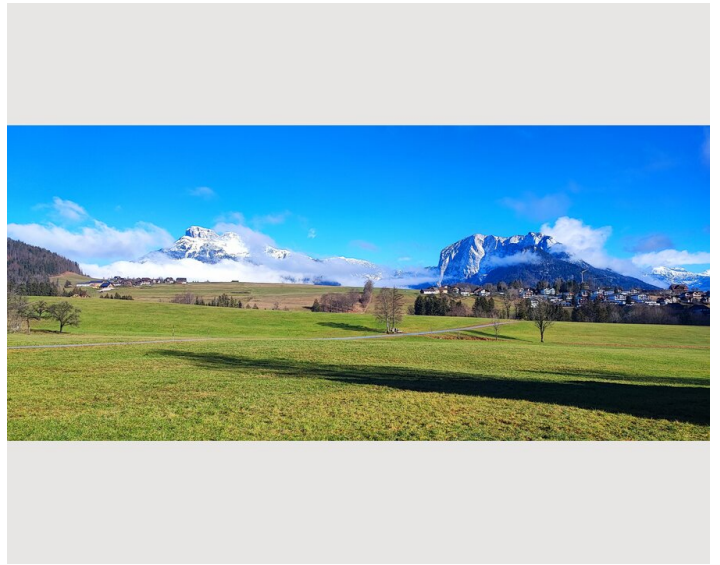
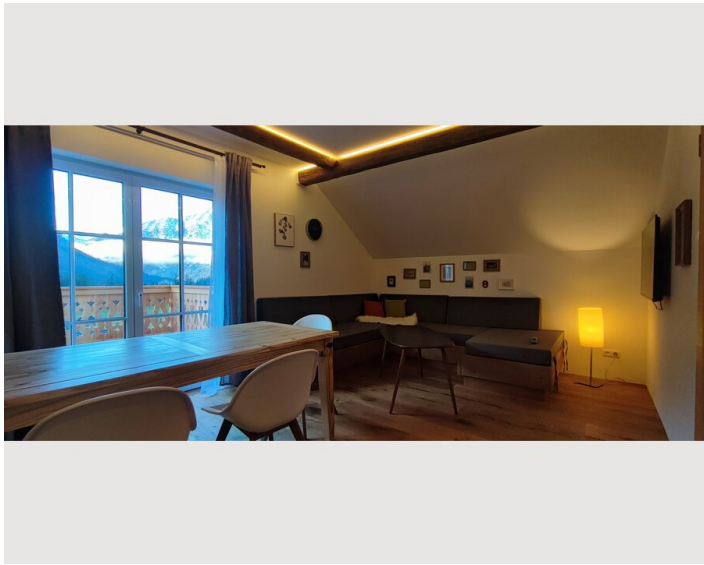






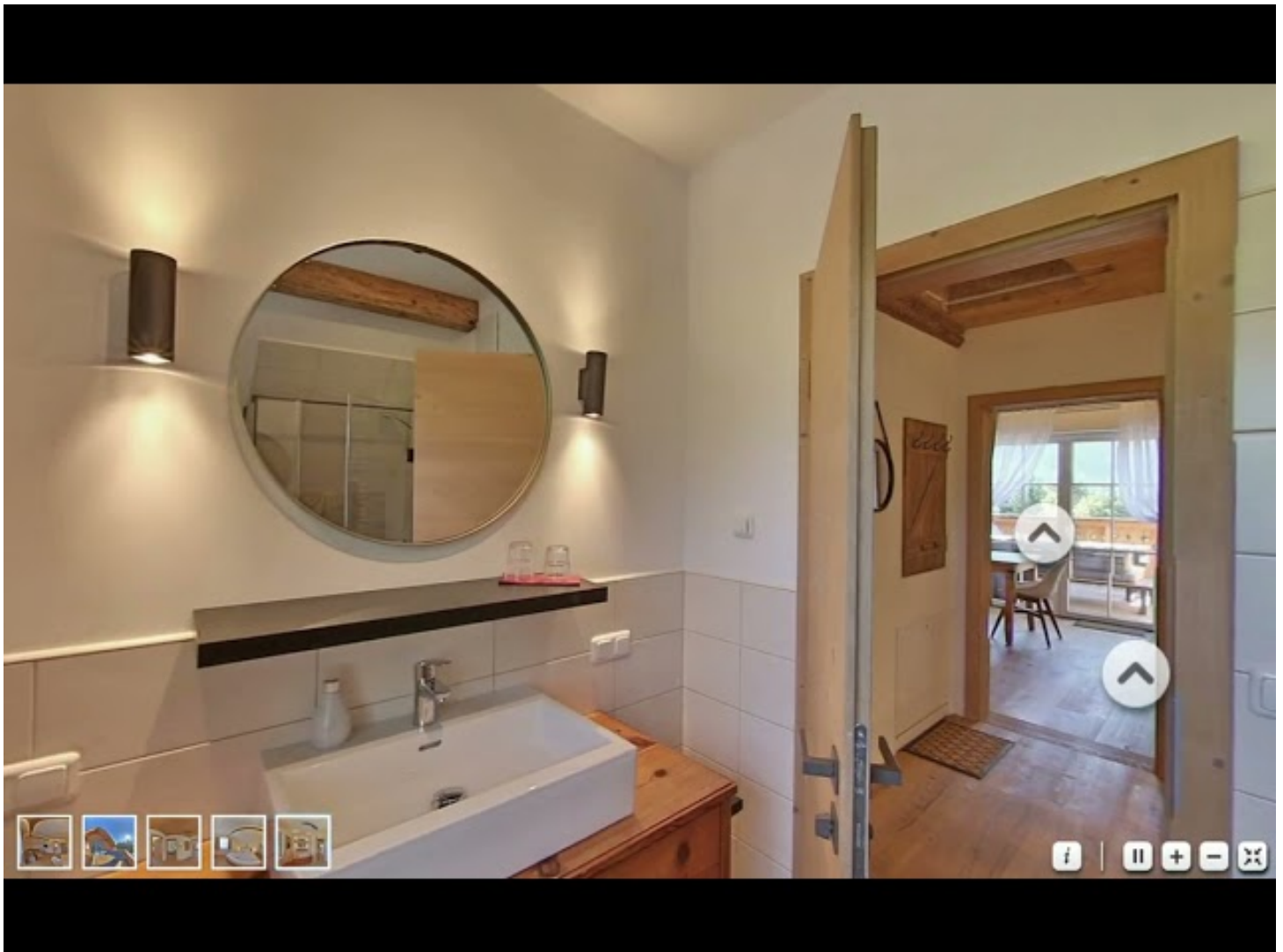






## Video

Goto Video



Location

