



2 ROOM APARTMENT, 3100 ST. PÖLTEN

## St. Pölten center with terrace

Object number: FYRC1

[View and rent online](#)

Newly renovated apartment in the center of St.Pölten, 1 minute to the town hall square! 8 minutes to the train station! Lovingly furnished apartment with terrace! The apartment faces the courtyard and is therefore very quiet!

<b>Period</b>	20/12/2025 - 20/01/2026
<b>Number of persons</b>	2
<b>Total</b> incl. VAT.	€ 1.481,80
Security deposit	€ 1.100,00



### Living space

60m<sup>2</sup>



### Maximum occupancy

2 Persons



### Complete accommodation <sup>?</sup>

1 Private bathroom 1 Separated bedroom



### 1. floor

Elevator available



### Check-in

14:00 - 20:00 Clock



### Check-out

10:00 - 11:00 Clock

## Sleeping options

### Sleeping room



1x Double bed (1,60 m x 2 m)

## Description of accommodation

Newly renovated apartment in the old town of St. Pölten. The anteroom leads to the open living/dining room with kitchen and a small storage room. The living area also leads to a spacious 16m<sup>2</sup> terrace. One door from the anteroom leads to the bathroom with a bathtub, the other leads to the bedroom with a 160x200m bed. The apartment is on the first floor. An elevator is available. The apartment also faces the courtyard and is therefore very quiet.

Parking is available on request (€20/day).

### Equipment & Features



#### Basic equipment

- Terrace
- Bedclothes
- Private toilet
- Hairdryer
- Internet/Wifi
- Towels
- Cleaning utensils



#### First supply

- Toilet paper



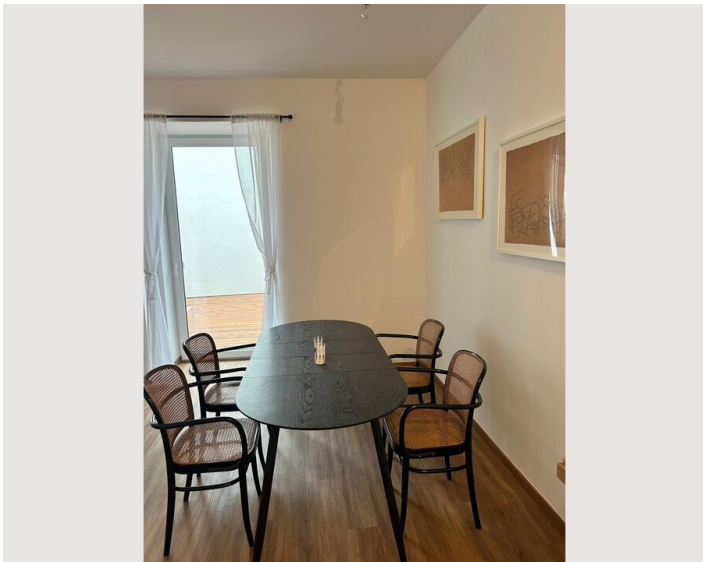
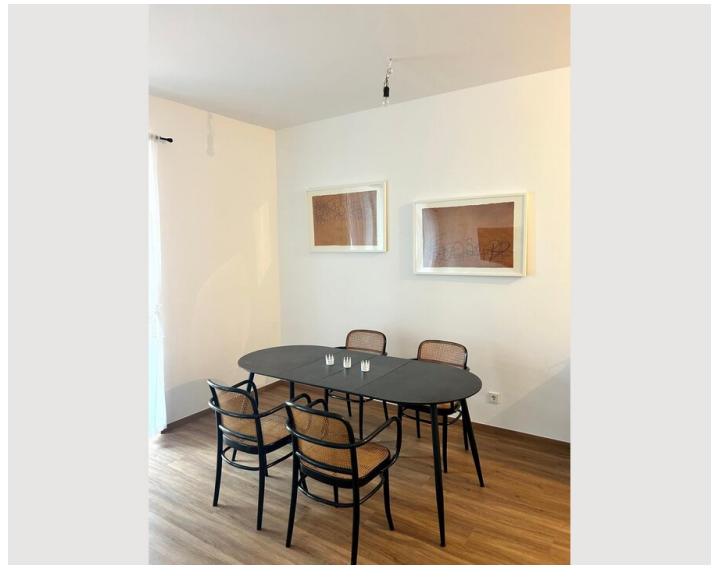
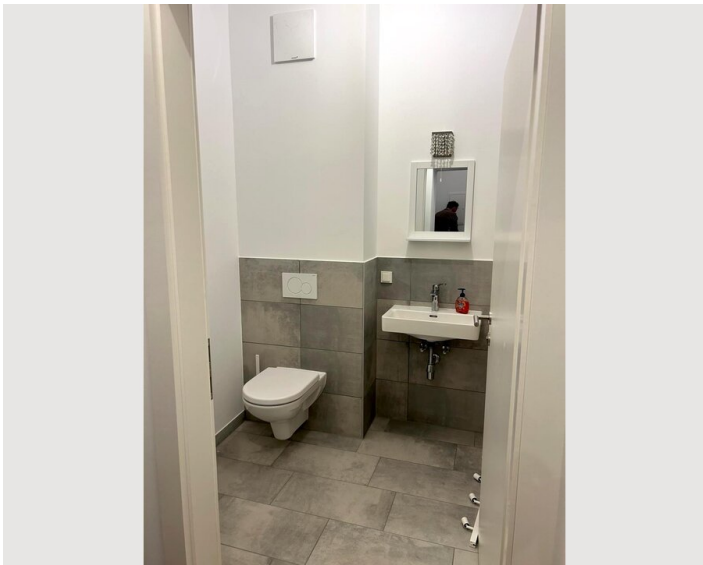
#### Kitchen

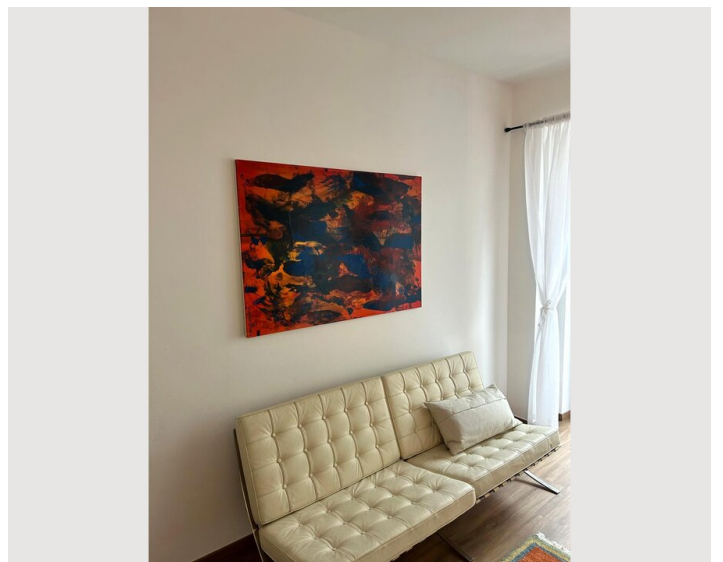
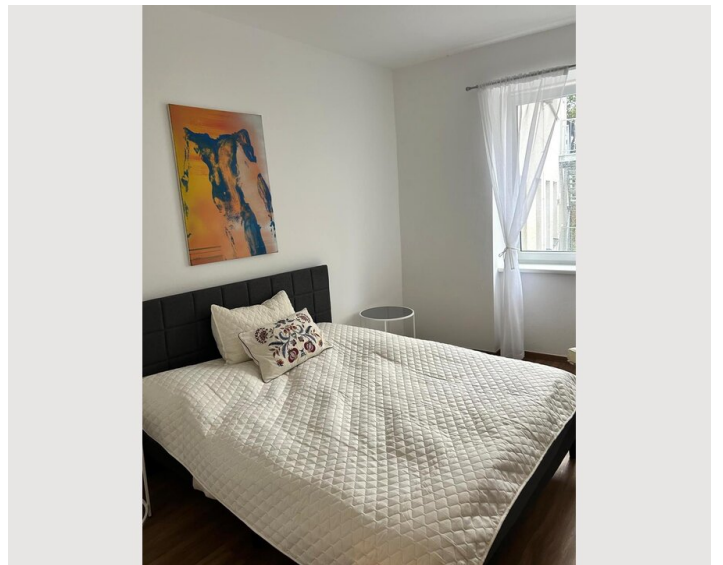
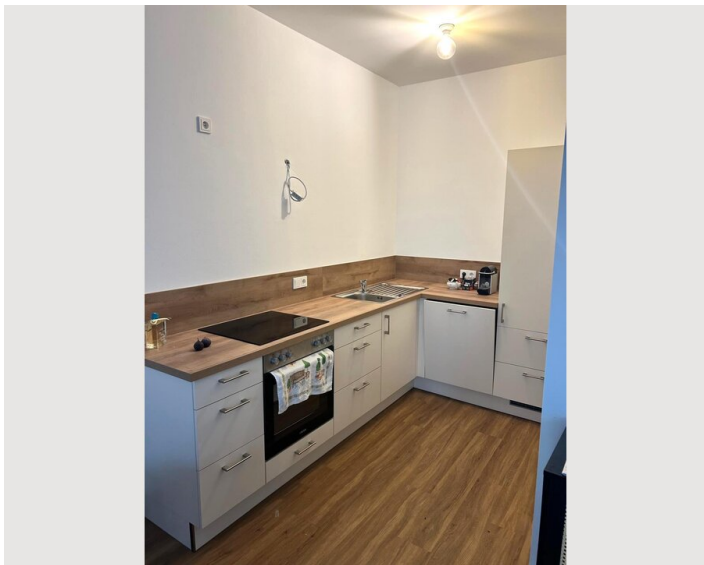
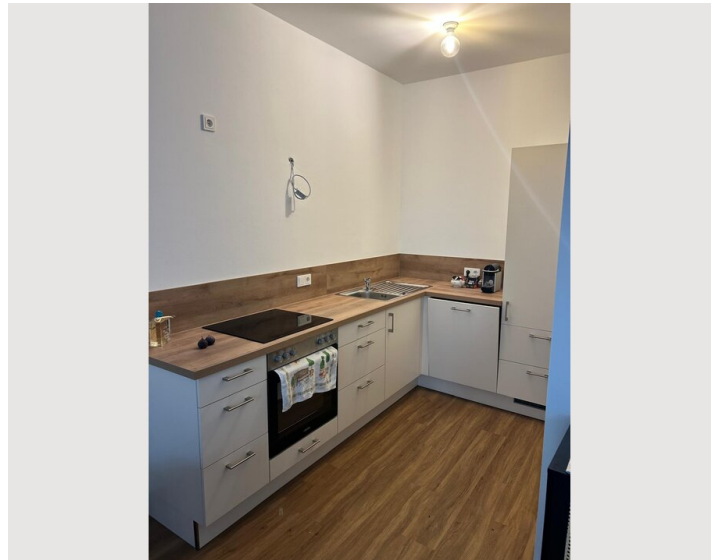
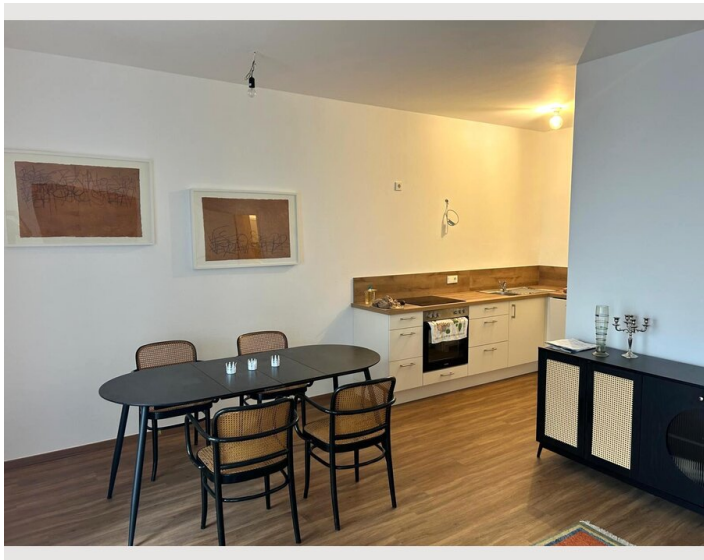
- Private kitchen
- Glasses/Tableware
- Dishwasher
- Cooking utensils
- Espresso machine

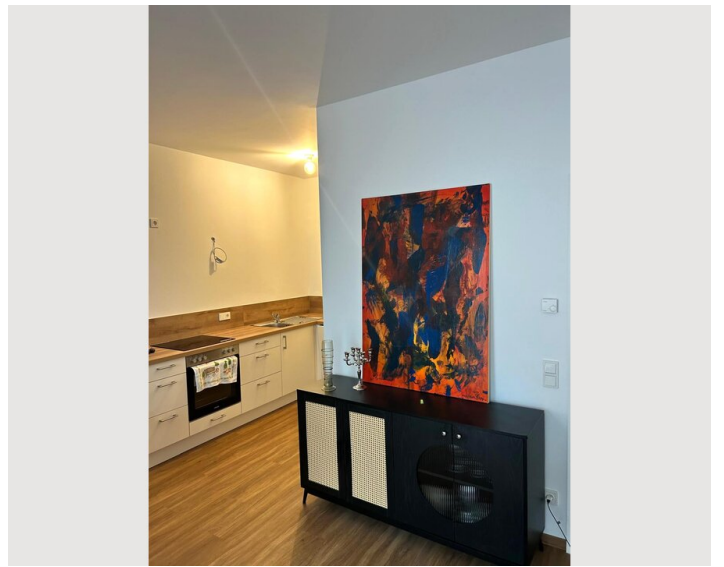
### Informations

- Suitable for construction workers
- Smoking not allowed
- Private entrance
- Suitable for children
- Desk/Workplace
- Pets on request

### Picture gallery







### Infrastructure

 railroad station St. Pölten 8 min.

 Spar 5 min

 Rathausplatz 1 min

---

A butcher shop, tobacconist and pizzeria are in the immediate vicinity.

The nearest pharmacy is 3 minutes away, supermarket 5 minutes.

The festival hall can be reached in 10 minutes on foot, St. Pölten Cathedral is 7 minutes away.

The Lower Austria Museum can be reached in 13 minutes on foot.

The apartment is located in the city center, so everything is within walking distance!

Location

