



2 ROOM APARTMENT, 9210 PÖRTSCHACH

Garden Appartement Poertschach a. W.

Object number: VCKB1

[View and rent online](#)

Come in! A modern apartment with the highest level of living comfort awaits you. The living dining area is harmoniously designed and invites you to linger. The kitchen is attractive and practical. The apartment offers two bedrooms.

Period	11/04/ - 11/05/2026
Number of persons	2
Total incl. VAT.	€ 2.124,14
Security deposit	€ 1.500,00



Living space

61m²



Maximum occupancy

4 Persons



Complete accommodation [?]

1 Private bathroom 2 Separated bedrooms



Ground floor

Elevator available



Check-in

15:00 - 00:00 Clock



Check-out

00:01 - 10:00 Clock

Sleeping options

Bedroom 1



1x Double bed (1,80 m x 2 m)

Bedroom 2



1x Double bed (1,80 m x 2 m)

Descripton of accommodation

This modern condominium, built in 2018, has a living space of approximately 62m² and offers highest living comfort. The living dining area is harmoniously designed and invites you to linger. The kitchen is attractive and practical, ideal for anyone who likes to cook and enjoy their meals.

The apartment offers two cozy bedrooms, ideal for relaxing and unwinding. The bathroom is modernly equipped with a shower, bathtub and window, which provides additional comfort. A separate one Toilet is also available.

Particularly noteworthy is the garden with a covered terrace for relaxing hours outdoors invites you and ensures that no barbecue party falls through. A carport space is also available free of charge.

The location is perfect:

Local supplies

Supermarket 625 m

Bakery 100m

Traffic

Bus 225 m

Motorway connection 1,400 m

Train station 250 m

Airport 9,900 m

Health

Doctor 450 m

Pharmacy 700 m

Children & Schools

School 800 m

Kindergarten 625 m

University 8,950 m

Other

Bank 650 m

ATM 650 m

Post 625 m

Police 200 m

Equipment & Features



Basic equipment

- Garden
- Music system/docking station
- Private washing machine
- Towels
- Private parking space
- Cleaning utensils
- Internet/Wifi
- TV
- Bedclothes
- Private toilet
- Vacuum cleaner
- Hairdryer



Fireplace

- Charcoal grill



First supply

- Toilet paper
- Soap
- shampoo
- Nespresso capsules



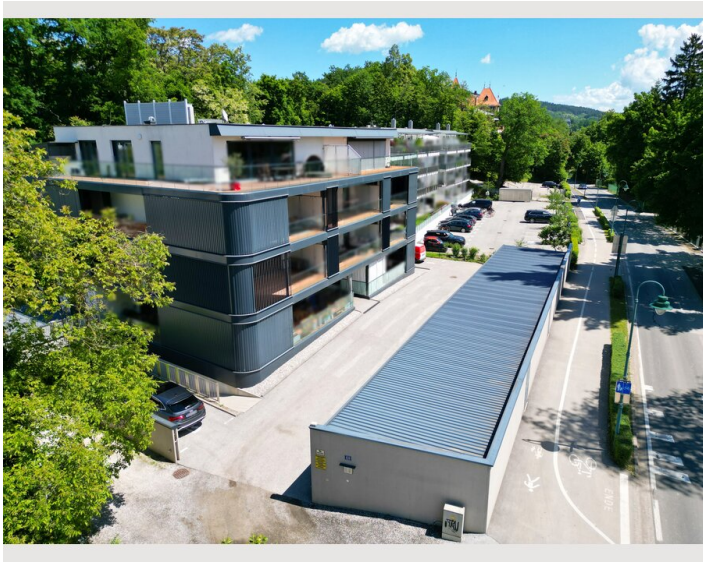
Kitchen

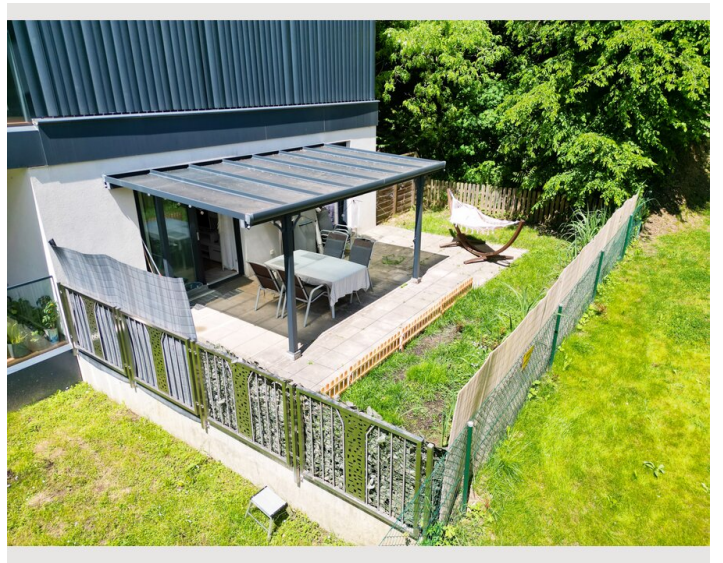
- Private kitchen
- Glasses/Tableware
- Dishwasher
- Cooking utensils
- Espresso machine
- Microwave

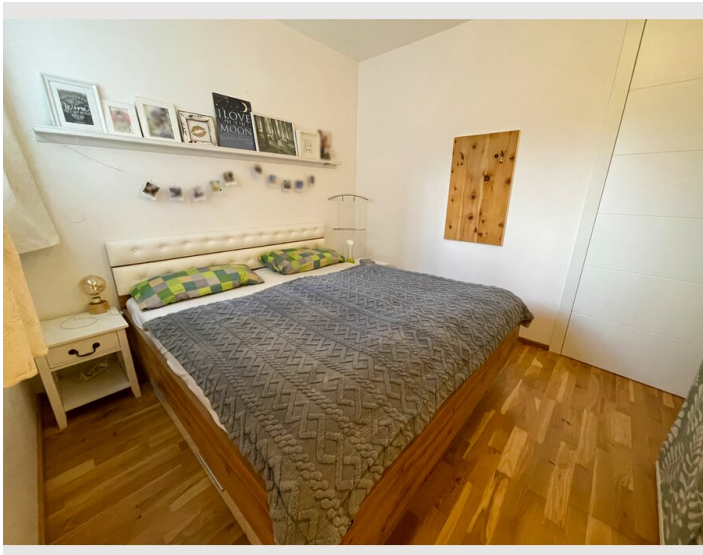
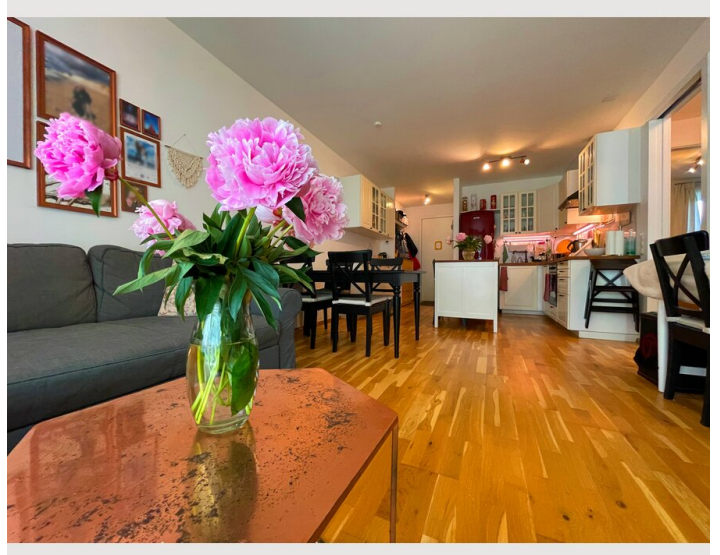
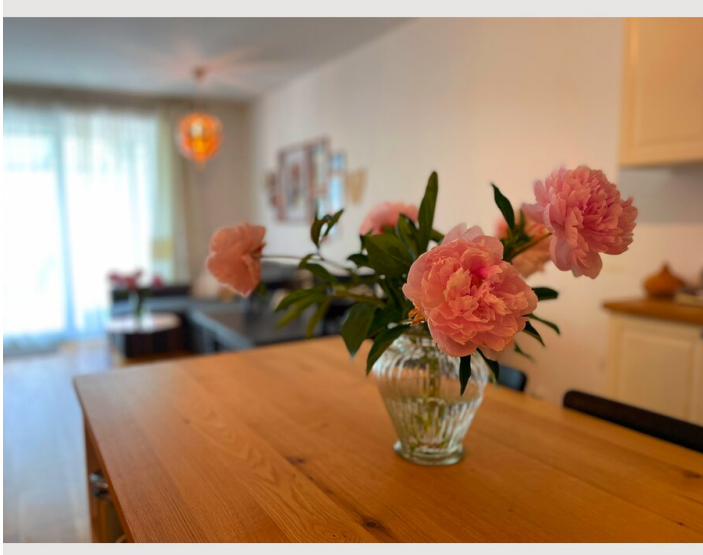
Informations

- Suitable for children
- Desk/Workplace
- Pets on request
- Regular cleaning at extra cost
- Smoking not allowed
- Private entrance
- Pets allowed
- Bicycle room free of charge

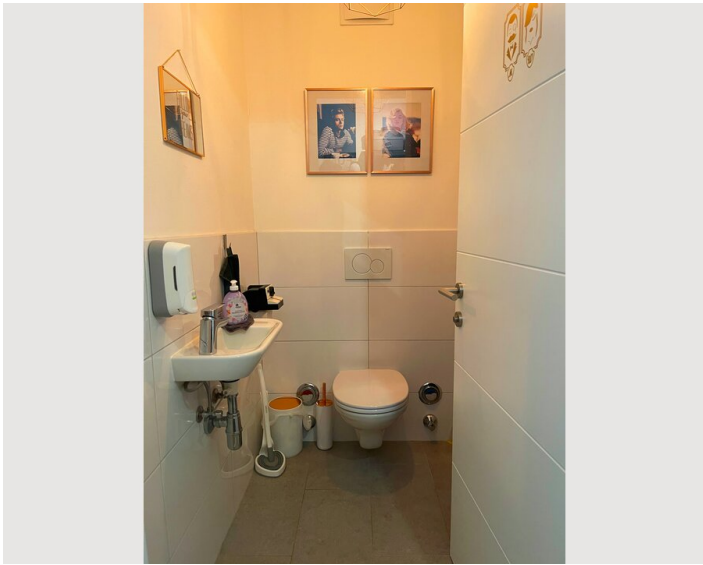
Picture gallery





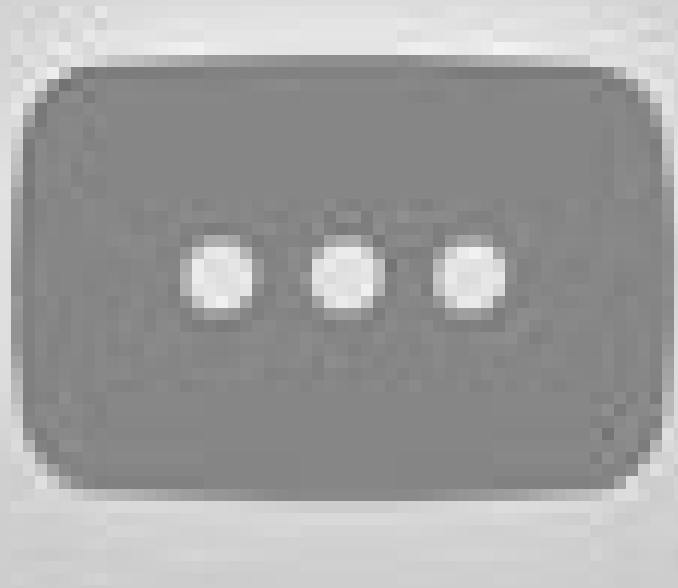






Video

[Goto Video](#)



Infrastructure



Infrastructure/Distances (POIs)

Leisure time:

Edelweissbad (free) 0.3km

Lake promenade 0.6km

Promenade pool 0.8km

Local supply:

Bakery 30 meters

Supermarket 0.6km

Traffic:

Train station 250 m

Bus 225 m

Motorway connection 1,400 m

Airport 9.9 km

Health:

Doctor 0.4km

Pharmacy 0.7km

Miscellaneous:

Charging station 20 meters

Bank 650 m

ATM 650 m

Post 625 m

Police 200 m

Location

