

2 ROOM APARTMENT, 5020 SALZBURG

## Sunny penthouse in an idyllic, peaceful green setting

Object number: LDCF1

[View and rent online](#)

Exclusive penthouse apartment with terrace in a quiet green location. Modern new-build with only four units. Shops for daily needs within walking distance, excellent bus connections to the city and the train station.

<b>Period</b>	18/12/2025 - 18/01/2026
<b>Number of persons</b>	2
<b>Total</b> incl. VAT.	€ 2.721,04
Security deposit	€ 2.100,00



### Living space

74m²



### Maximum occupancy

2 Persons



### Complete accommodation <sup>?</sup>

1 Private bathroom 1 Separated bedroom



### 2. floor



### Check-in

16:00 - 11:00 Clock



### Check-out

16:00 - 11:00 Clock

## Sleeping options

### Sleeping room



1x Double bed (1,60 m x 2 m)

## Descripton of accommodation

The apartment is located in a quiet green area and spans two levels. The top floor features the living area and bedroom with direct access to the XL roof terrace. A carport provides parking for your car.

## Equipment & Features



### Basic equipment

- Terrace
  - Internet/Wifi
  - Private washing machine
  - Towels
  - Private parking space
  - Vacuum cleaner
  - Cleaning utensils
  - Roof-terrace
  - TV
  - Bedclothes
  - Private toilet
  - Garage
  - Iron & ironing board
- 



### First supply

- Toilet paper
  - Soap
  - Fridge filling on request
  - shampoo
  - Nespresso capsules
- 



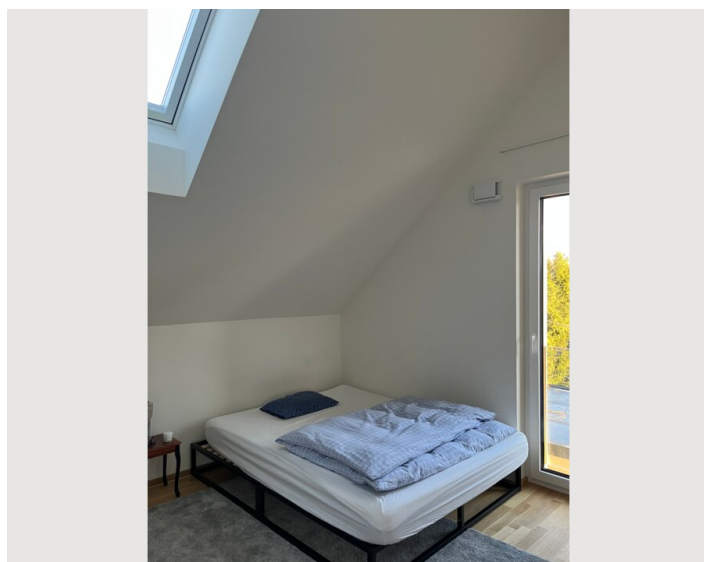
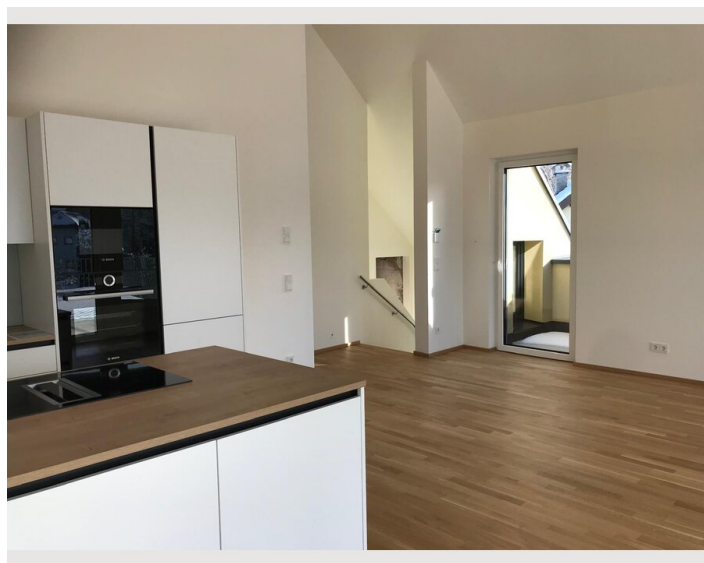
### Kitchen

- Private kitchen
- Espresso machine
- Microwave
- Glasses/Tableware
- Dishwasher
- Steam cooker

## Informations

- Not suitable for children
- Short-term parking zone subject to a charge
- Pets forbidden
- Bicycle room free of charge
- Smoking not allowed
- Private entrance
- Regular cleaning at extra cost

## Picture gallery



### Infrastructure

📍 10 min

🚗 10 min

🚶 10 min

🏠 5 min

The apartment is situated in a quiet green area, surrounded by single-family homes with large gardens and excellent infrastructure. The city center is nearby, and a recreational area is right on your doorstep. Airport, train station, and highway are easily accessible in a short time.

Location

