



2 ROOM APARTMENT, 1090 VIENNA

## Bright 2 room apartment 54m<sup>2</sup> in a traditional building from 1903.

Object number: 112

[View and rent online](#)

<b>Period</b>	21/12/2025 - 21/01/2026
<b>Number of persons</b>	2
<b>Total</b> incl. VAT.	€ 1.495,99
Security deposit	€ 1.200,00

Bright 2 room apartment in a traditional building from 1903.



### Living space

54m<sup>2</sup>



### Maximum occupancy

4 Persons



### Complete accommodation <sup>?</sup>

1 Private bathroom 1 Separated bedroom 1 Living-Sleepingroom



### 2. floor

Elevator available



### Check-in

14:00 - 23:59 Clock



### Check-out

00:01 - 11:00 Clock

## Sleeping options

### Sleeping room



1x Double bed (1,40 m x 2 m)



1x Double bed (1,60 m x 2 m)

### Living and sleeping



1x Sofa bed (2 persons)

## Descripton of accommodation

The apartment is on the 2nd floor and the building has an elevator. Please take note that to reach the elevator you need to walk up exactly 7 stairs in the entrance.

The apartment is equipped with a kitchenette, a living/bedroom with a dining area, 2 sofas and a desk, as well as a bedroom with a view of the quiet courtyard. Of course, there is also a bathroom with shower and toilet for private and sole use.

Since the Währinger Gürtel is one of Vienna's main traffic arteries, there is some noise from passing traffic, but you benefit from great transport connections.

The apartment is completely private so you have access to all areas.

## Equipment & Features



### Basic equipment

- Internet/Wifi
- Bedclothes
- Private toilet
- Iron & ironing board
- Hairdryer
- Private washing machine
- Towels
- Vacuum cleaner
- Cleaning utensils



### First supply

- Toilet paper
- Soap
- shampoo



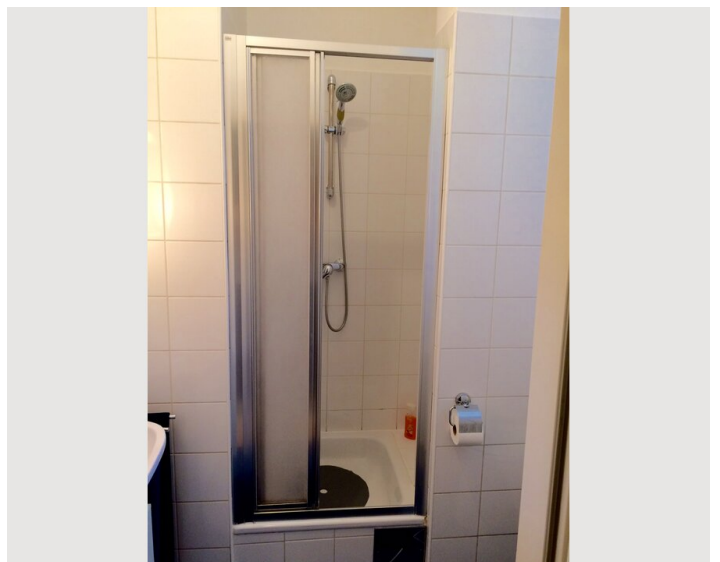
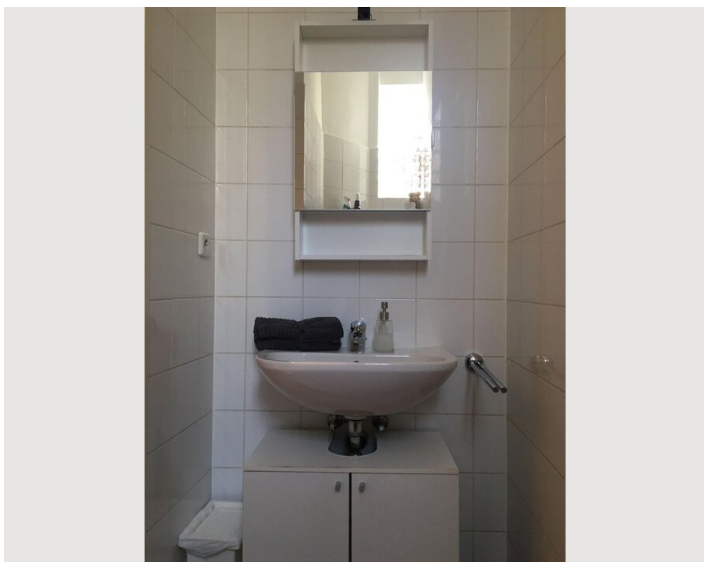
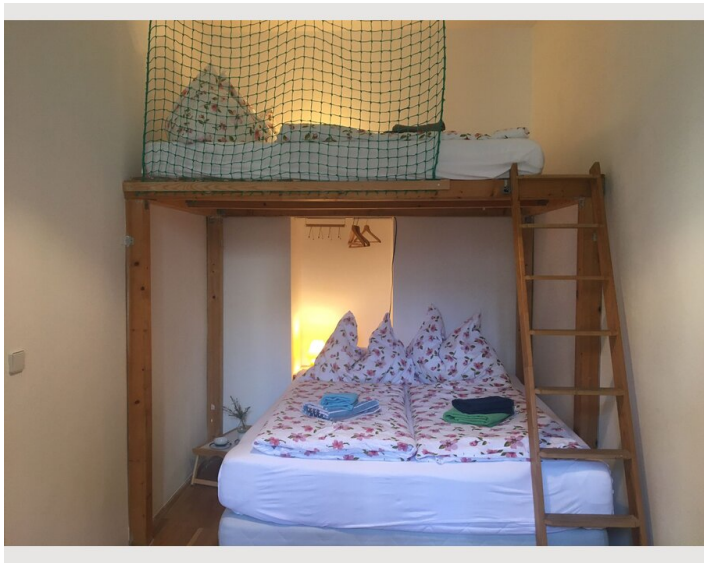
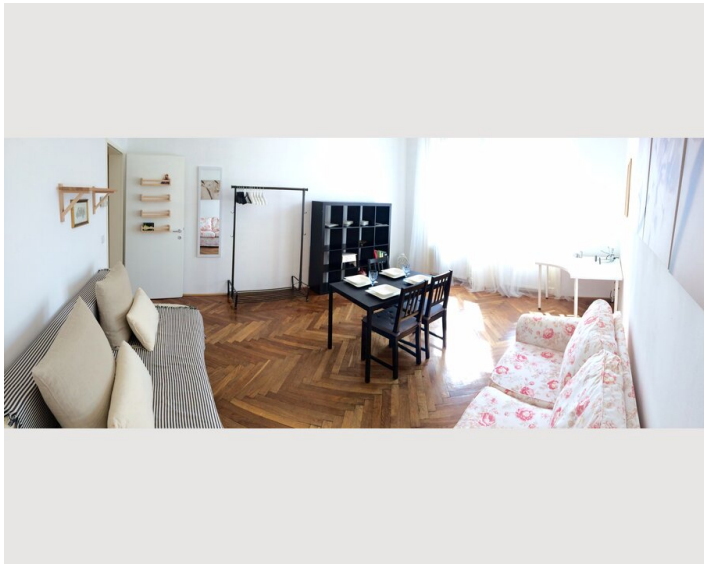
### Kitchen

- Kitchenette
- Coffee machine
- Glasses/Tableware



## Informations

- Smoking not allowed
- Desk/Workplace
- Regular cleaning at extra cost
- Short-term parking zone subject to a charge
- Pets forbidden

## Picture gallery



## Infrastructure

 Underground Line 6 and Tram 40/41/42 vis-à-vis  10min by tram

 vis-à-vis

Situated across the street is the underground (line U6) and tram station (line 40, 41 and 42), a supermarket as well as a bakery, a city-bike station is found around the corner. Cosy cafés and restaurants within walking distance and you can reach the city centre within 10 minutes.

## Location

