



3 ROOM APARTMENT, 1090 VIENNA

Bright 3 Room Flat 65m² in a traditional building from 1903.

Object number: 115

[View and rent online](#)

Period	15/08/ - 15/09/2025
Number of persons	2
Total incl. VAT.	€ 1.800,72
Security deposit	€ 1.400,00

Bright 3 room apartment in a traditional building from 1903.



Living space

65m²



Maximum occupancy

6 Persons



Complete accommodation [?]

1 private bathroom 2 Separated bedrooms 1 Living-Sleepingroom



2. floor

Elevator available



Check-in

14:00 - 00:59 Clock



Check-out

00:01 - 11:00 Clock

Sleeping options

Bedroom 1



1x Double bed (1,40 m x 2 m)

Bedroom 2



1x Double bed (1,60 m x 2 m)



1x Single bed

Living and sleeping



1x Single bed

Descripton of accommodation

The apartment is on the 2nd floor and the building has an elevator. Please take note that to reach the elevator you need to walk up exactly 7 stairs in the entrance.

Beautiful old building apartment with kitchen, a large bedroom with double and single bed, another small bedroom with a view of the quiet courtyard and a living/bedroom. Of course there is also a bathroom equipped with a bathtub and a separate toilet for private and sole use.

The apartment is completely private so you have access to all areas.

Equipment & Features



Basic equipment

- Internet/Wifi
- Bedclothes
- Private toilet
- Iron & ironing board
- Hairdryer
- Private washing machine
- Towels
- Vacuum cleaner
- Cleaning utensils



First supply

- Toilet paper
- Soap
- shampoo



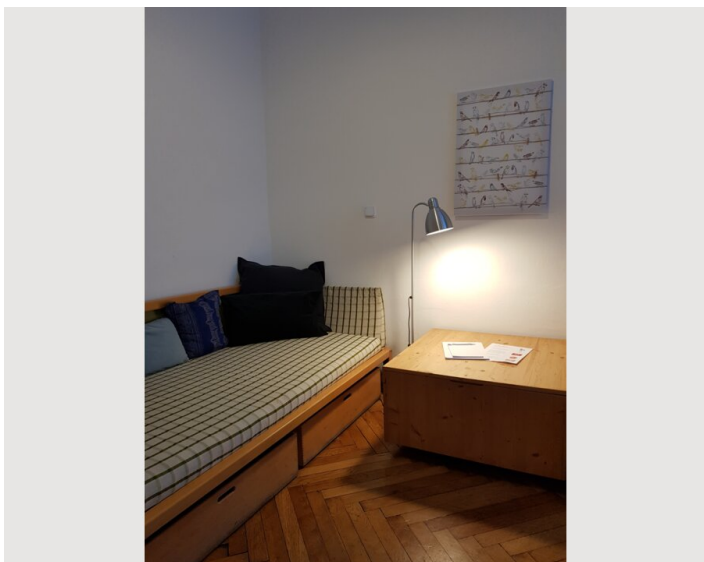
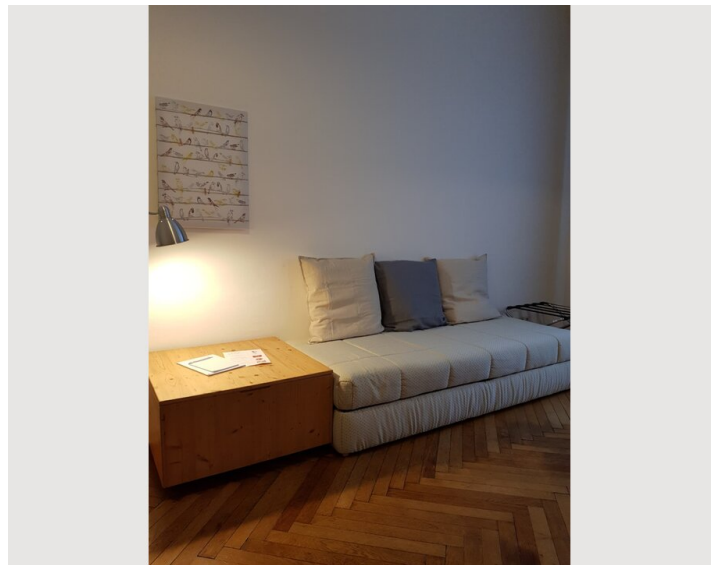
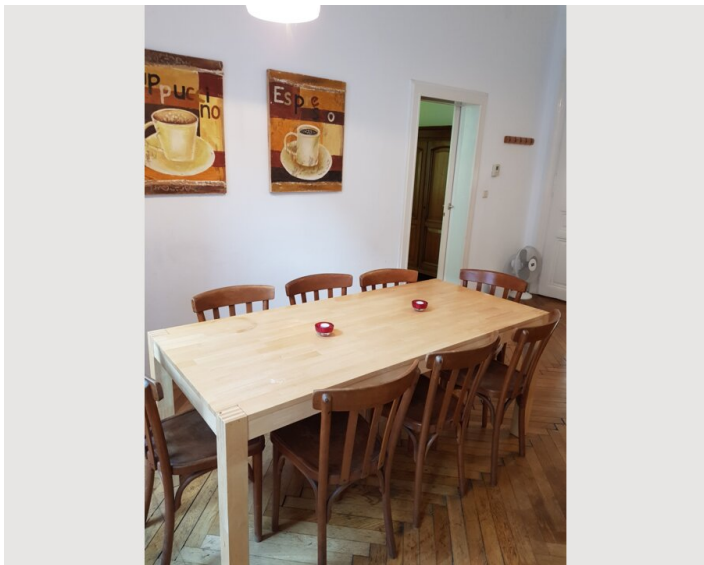
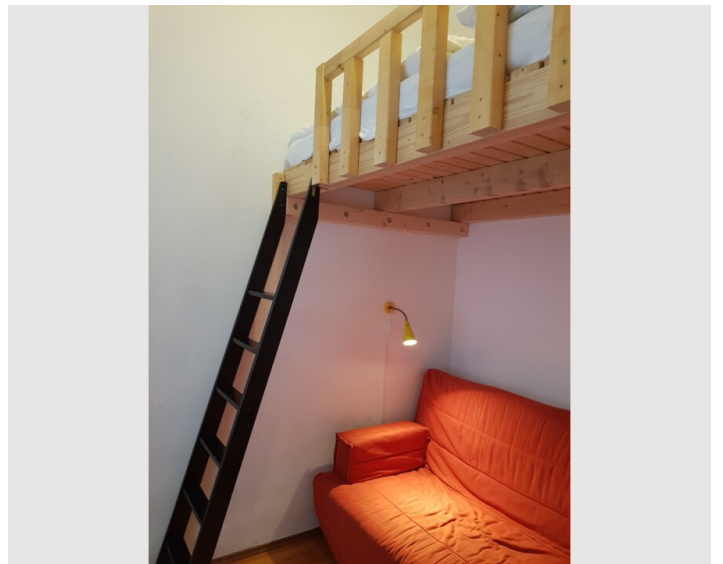
Kitchen

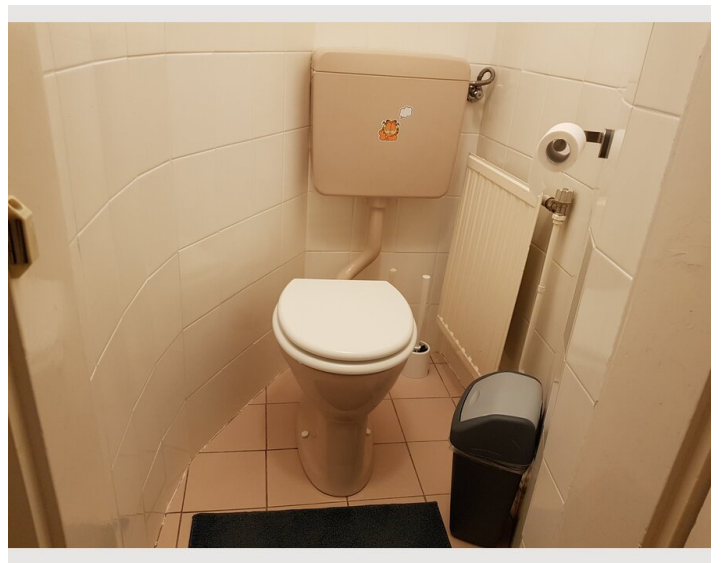
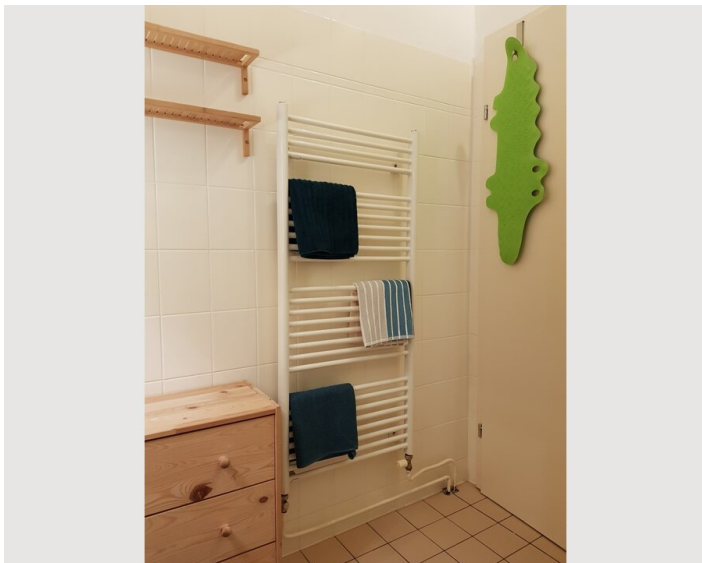
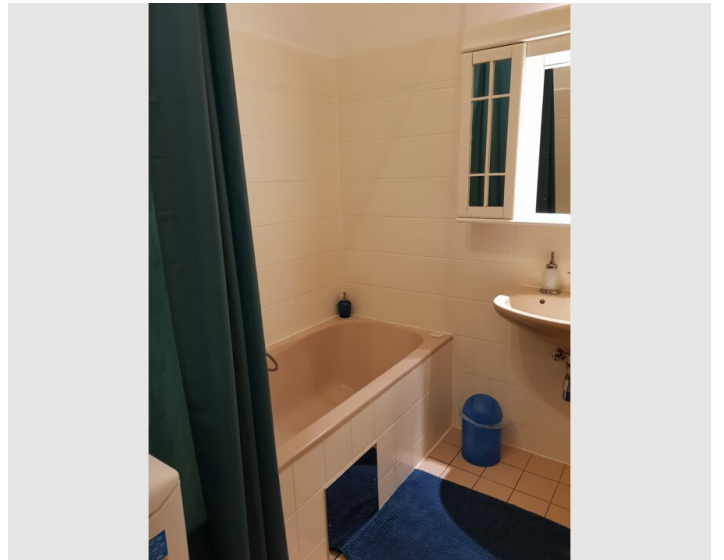
- Private kitchen
- Glasses/Tableware
- Dishwasher
- Cooking utensils
- Coffee machine

Informations




- Smoking not allowed
- Pets on request
- Short-term parking zone subject to a charge
- Regular cleaning at extra cost

Picture gallery





Infrastructure

-  Underground Line 6 and Tram 40/41/42 vis-à-vis  10min by tram
-  vis-à-vis

Situated across the street is the underground (line U6) and tram station (line 40, 41 and 42), a supermarket as well as a bakery, a city-bike station is found around the corner. Cosy cafés and restaurants within walking distance and you can reach the city centre within 10 minutes.

Location

