



3 ROOM APARTMENT, 1090 VIENNA

## Bright 3 Room Flat 84m<sup>2</sup> in a traditional building from 1903.

Object number: 118

[View and rent online](#)

Bright 3 room apartment in a traditional building from 1903.

<b>Period</b>	30/01/ - 02/03/2026
<b>Number of persons</b>	2
<b>Total incl. VAT.</b>	€ 2.327,08
<b>Security deposit</b>	€ 1.800,00



### Living space

84m<sup>2</sup>



### Maximum occupancy

6 Persons



### Complete accommodation <sup>?</sup>

1 Private bathroom 2 Separated bedrooms 1 Living-Sleepingroom



### 3. floor

Elevator available



### Check-in

14:00 - 23:59 Clock



### Check-out

00:01 - 11:00 Clock

## Sleeping options

### Bedroom 1



1x Double bed (1,40 m x 2 m)

### Bedroom 2



1x Double bed (1,60 m x 2 m)

### Living & Sleeping



1x Sofa bed (2 persons)

## Descriptiton of accommodation

The apartment is on the 3rd floor and the building has an elevator. Please take note that to reach the elevator you need to walk up exactly 7 stairs in the entrance.

Beautiful old building apartment with kitchen, two bedrooms as well as a living/bedroom. Of course there is also a bathroom and a separate toilet for private and sole use.

Since the Währinger Gürtel is one of Vienna's main traffic arteries, there is some noise from passing traffic, but you benefit from great transport connections.

The apartment is completely private so you have access to all areas.

### Equipment & Features



#### Basic equipment

- Internet/Wifi
- Bedclothes
- Private toilet
- Iron & ironing board
- Hairdryer
- Private washing machine
- Towels
- Vacuum cleaner
- Cleaning utensils



#### First supply

- Toilet paper
- Soap
- shampoo



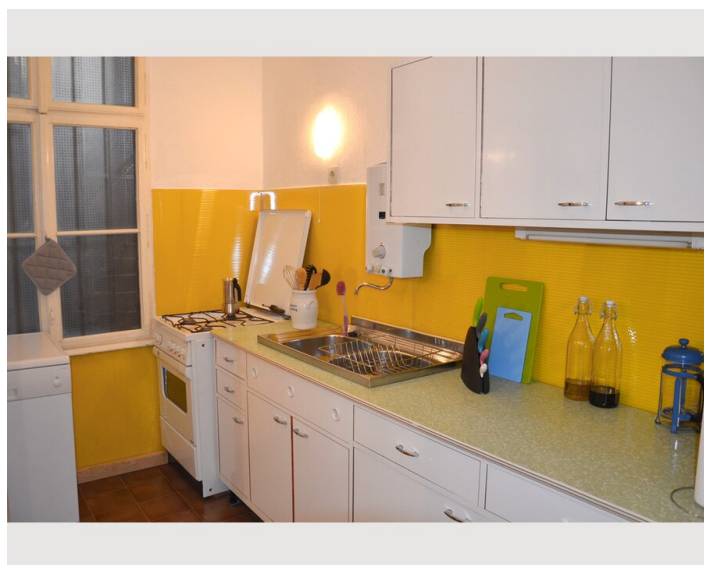
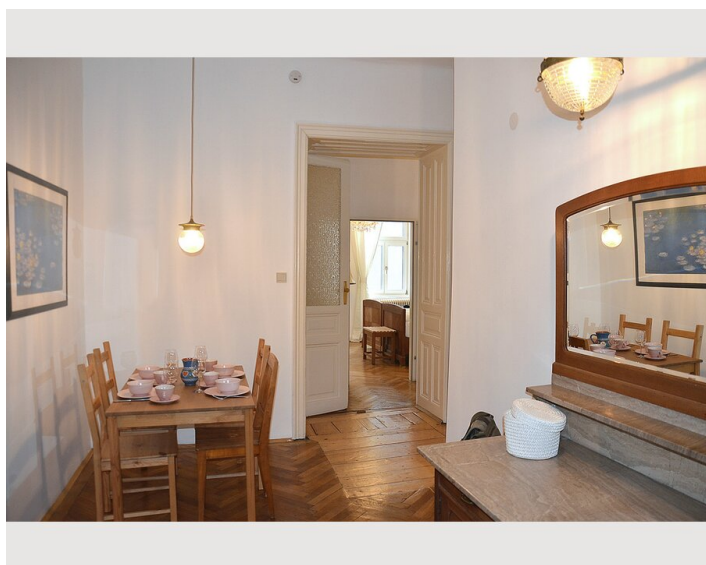
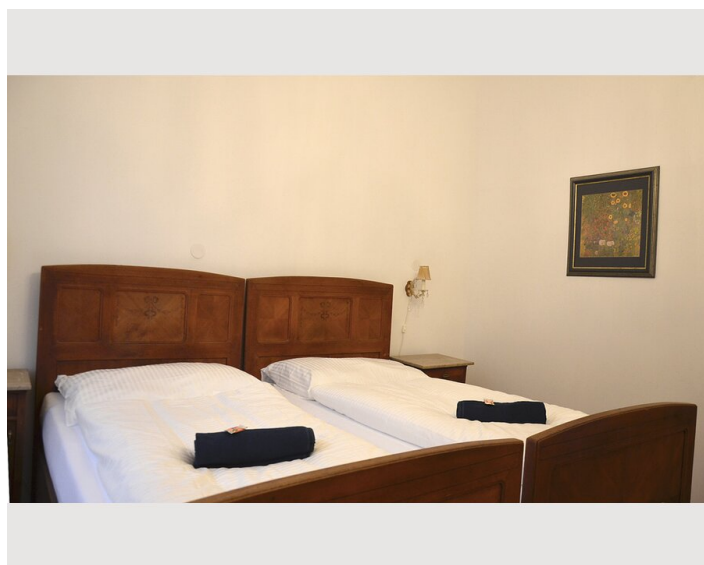
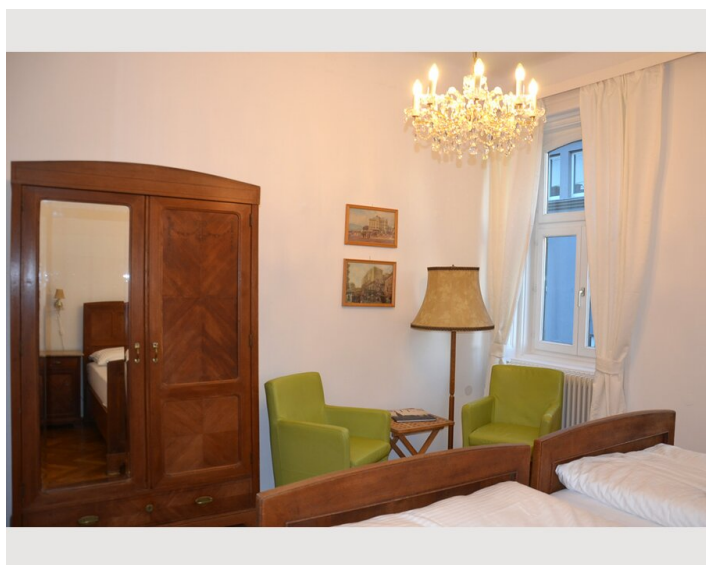
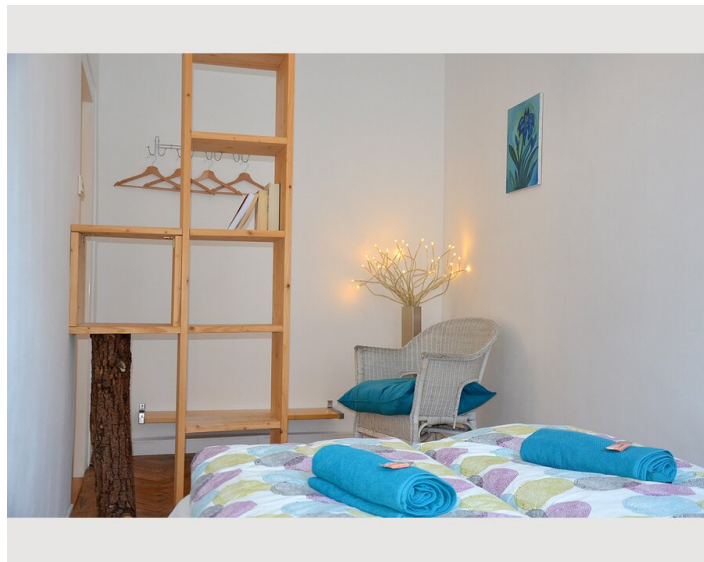
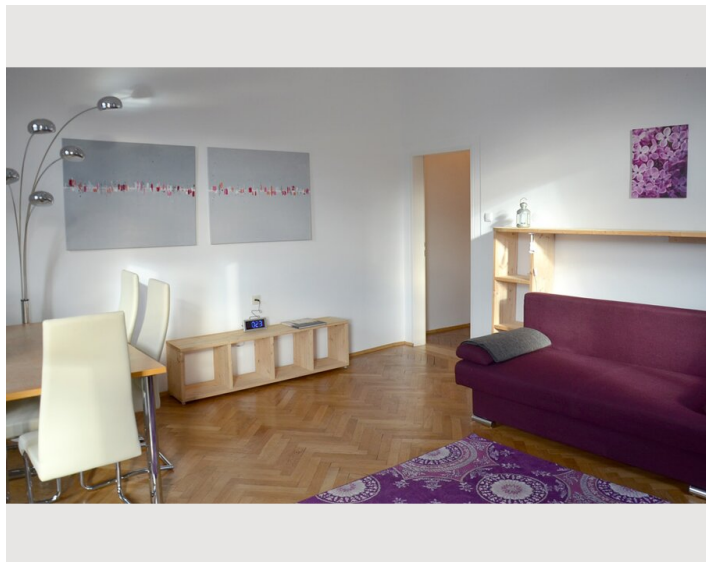
#### Kitchen

- Private kitchen
- Glasses/Tableware
- Dishwasher
- Cooking utensils
- Coffee machine

### Informations

- Smoking not allowed
- Pets on request
- Short-term parking zone subject to a charge
- Regular cleaning at extra cost

## Picture gallery







### Infrastructure

🚇 Underground Line 6 and Tram 40/41/42 vis-à-vis    🕒 10min by tram

🏠 vis-à-vis

Situated across the street is the underground (line U6) and tram station (line 40, 41 and 42), a supermarket as well as a bakery, a city-bike station is found around the corner. Cosy cafés and restaurants within walking distance and you can reach the city centre within 10 minutes.

Location

