

4 ROOM APARTMENT AND MORE, 1090 VIENNA

Bright 5 Room Flat 117m² in a traditional building from 1903.

Object number: 117

[View and rent online](#)

Period	05/07/ - 05/08/2025
Number of persons	2
Total incl. VAT.	€ 3.095,47
Security deposit	€ 2.400,00

Bright 5 room apartment in a traditional building from 1903.



Living space

117m²



Maximum occupancy

12 Persons



Complete accommodation [?]

1 private bathroom 4 Separated bedrooms 1 Living-Sleepingroom



3. floor

Elevator available



Check-in

14:00 - 23:59 Clock



Check-out

00:01 - 11:00 Clock

Sleeping options

Bedroom 1



1x Double bed (1,40 m x 2 m)

Bedroom 2



1x Double bed (1,40 m x 2 m)

Bedroom 3



1x Double bed (1,40 m x 2 m)

Bedroom 4



1x Double bed (1,40 m x 2 m)



1x Double bed (1,60 m x 2 m)

Living and sleeping



1x Sofa bed (2 persons)

Descripton of accommodation

The apartment is on the 3rd floor and the building has an elevator. Please take note that to reach the elevator you need to walk up exactly 7 stairs in the entrance.

Beautiful apartment with kitchen, 4 separate bedrooms and a living/bedroom. Of course there are also a bathroom as well as two separate toilets for private and sole use.

Since the Währinger Gürtel is one of Vienna's main traffic arteries, there is some noise from passing traffic, but you benefit from great transport connections.

The apartment is completely private so you have access to all areas.

Equipment & Features



Basic equipment

- Internet/Wifi
- Bedclothes
- Private toilet
- Iron & ironing board
- Hairdryer
- Private washing machine
- Towels
- Vacuum cleaner
- Cleaning utensils



First supply

- Toilet paper
- Soap
- shampoo



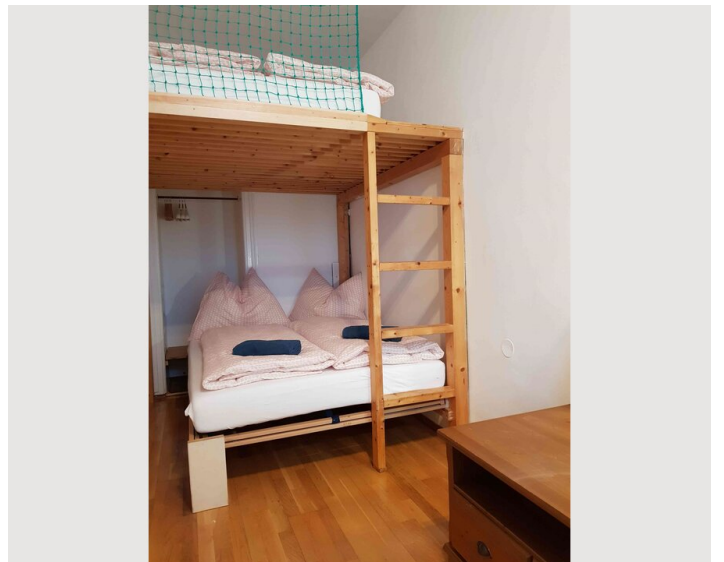
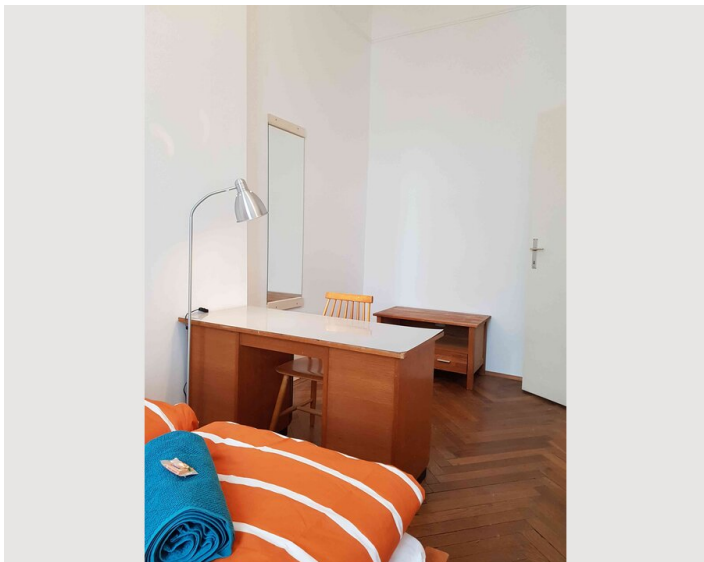
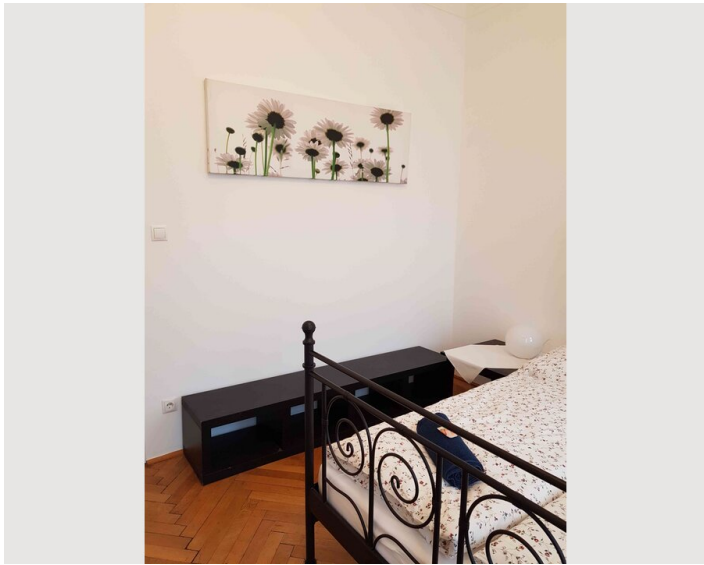
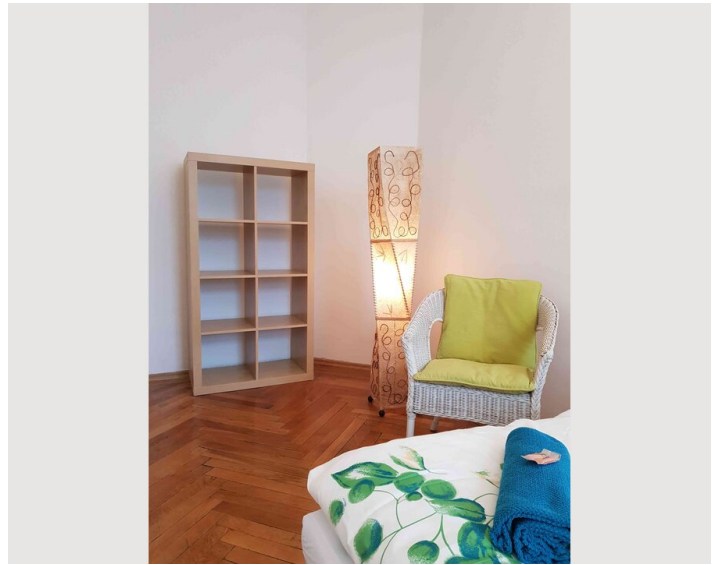
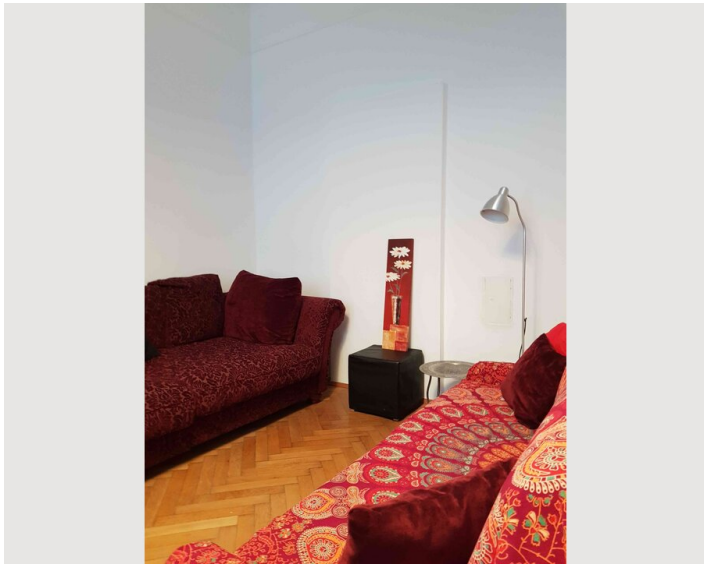
Kitchen

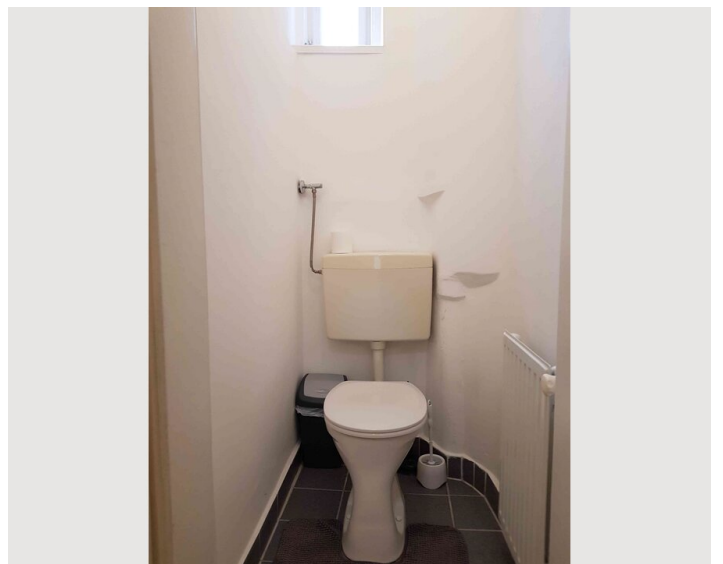
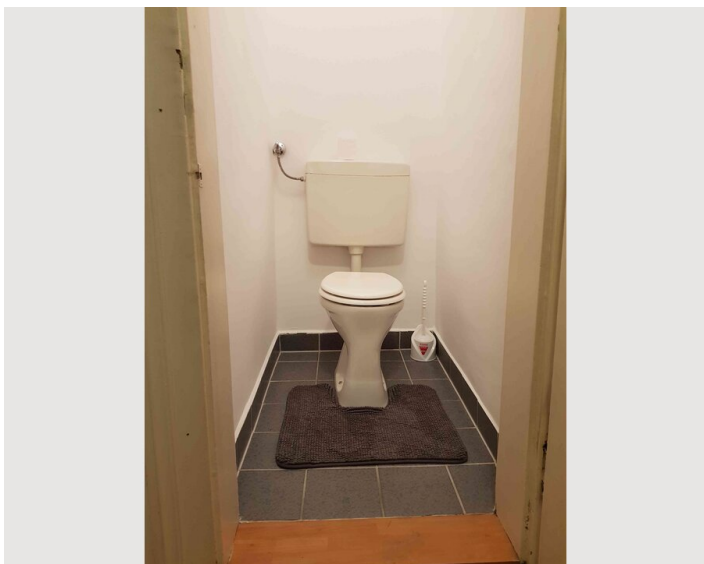
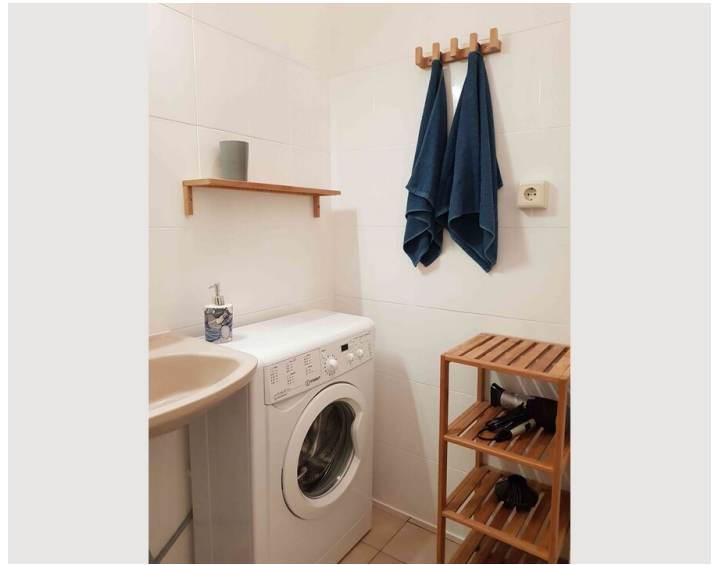
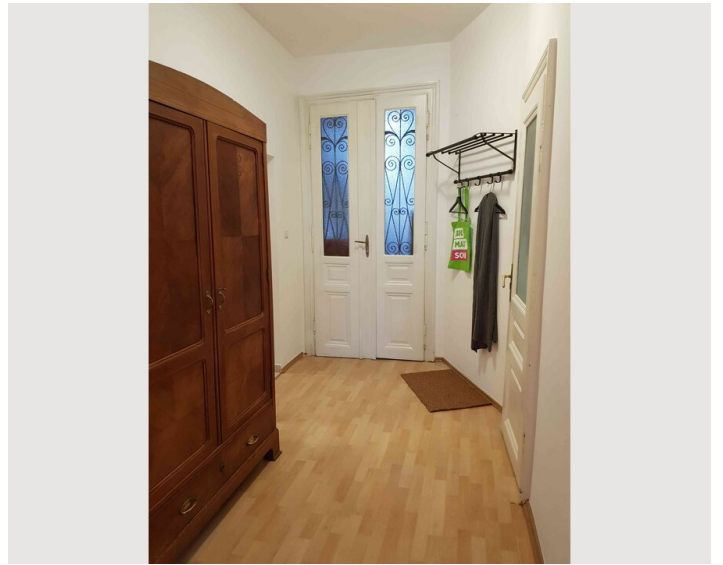
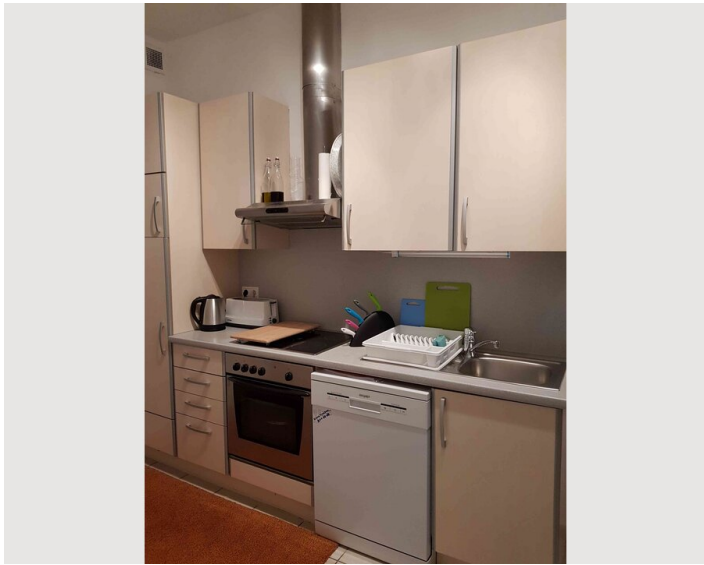
- Private kitchen
- Glasses/Tableware
- Dishwasher
- Cooking utensils
- Coffee machine

Informations

- Smoking not allowed
- Pets on request
- Short-term parking zone subject to a charge
- Regular cleaning at extra cost


Picture gallery







Infrastructure

 Underground Line 6 and Tram 40/41/42 vis-à-vis  10min by tram

 vis-à-vis

Situated across the street is the underground (line U6) and tram station (line 40, 41 and 42), a supermarket as well as a bakery, a city-bike station is found around the corner. Cosy cafés and restaurants within walking distance and you can reach the city centre within 10 minutes.

Location

