

STUDIO APARTMENT, 8010 GRAZ

City Center Apartment - Castle Hill View

Object number: AZFT1

[View and rent online](#)

This 34 m² apartment is located on the 7th floor with a fantastic view over Graz. It consists of 1 living area with an integrated kitchen, 1 small hallway, and a small bathroom with a shower and toilet, accommodating up to 2 people comfortably.

Period	21/02/ - 21/03/2026
Number of persons	2
Total incl. VAT.	€ 1.293,30
Security deposit	€ 1.000,00



Living space

34m²



Maximum occupancy

2 Persons



Complete accommodation [?]

1 Private bathroom 1 Living-Sleepingroom



7. floor

Elevator available



Check-in

17:00 - 21:00 Clock



Check-out

07:00 - 09:00 Clock

Sleeping options

Living & Sleeping



1x Sofa bed (2 persons)

Descripton of accommodation

Studio apartment with stunning views in the heart of Graz, perfect for exploring the city and its attractions on foot, as well as enjoying cultural offerings at the opera, theater, and various concerts. TU Graz is just a 5-minute walk away. A bakery and breakfast café are located directly across the street, along with a grocery store and numerous restaurants, bars, and shops. Those who value regional products can reach the Kaiser-Josef-Markt, featuring fruits, vegetables, and Styrian specialties, in just 2 minutes.

Equipment & Features



Basic equipment

- Internet/Wifi
- Bedclothes
- Private toilet
- Iron & ironing board
- Hairdryer
- Private washing machine
- Towels
- Vacuum cleaner
- Cleaning utensils



First supply

- Toilet paper
- Soap
- shampoo



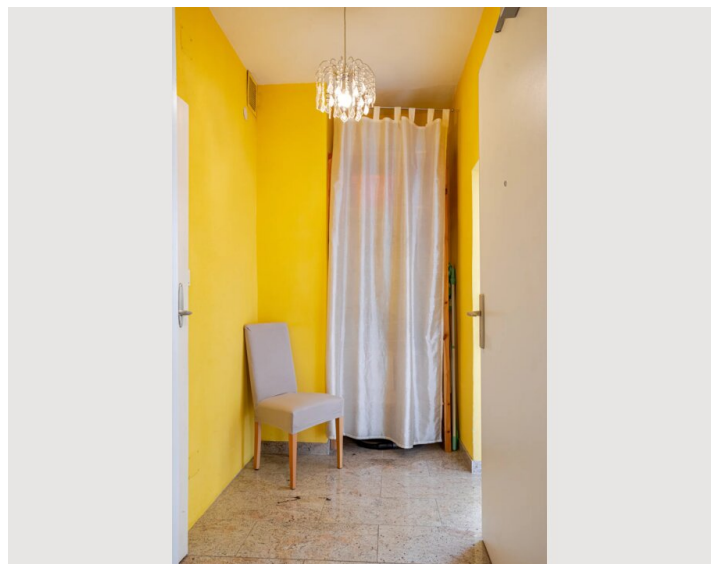
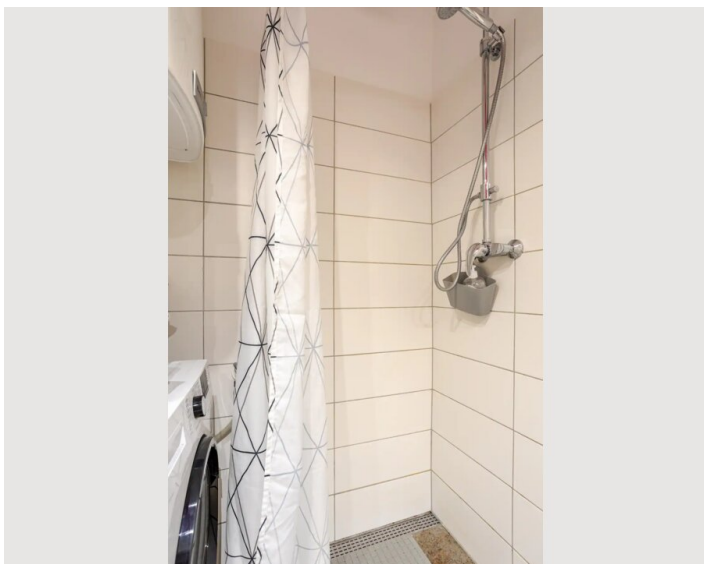
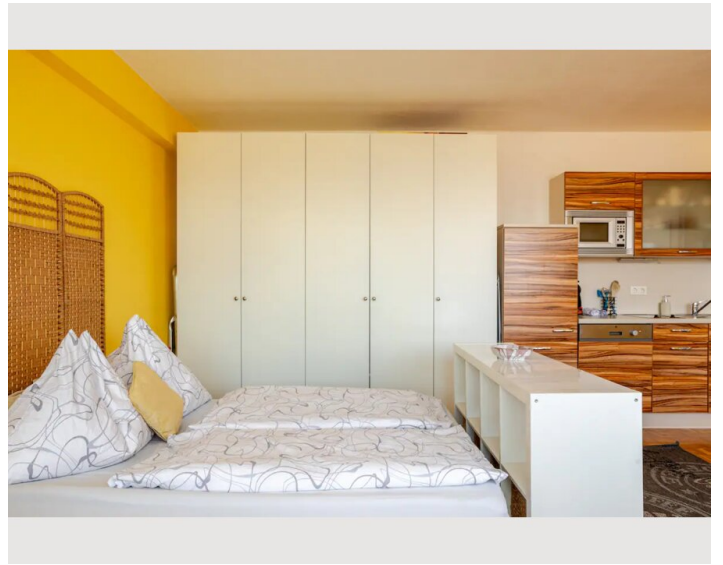
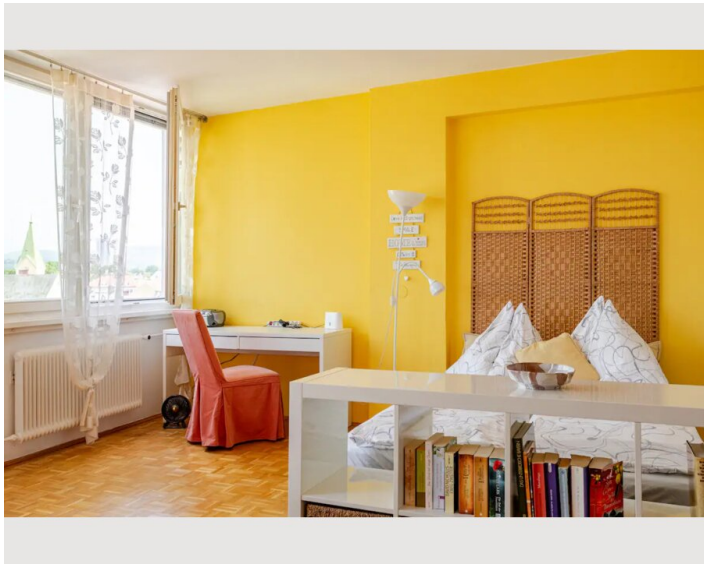
Kitchen

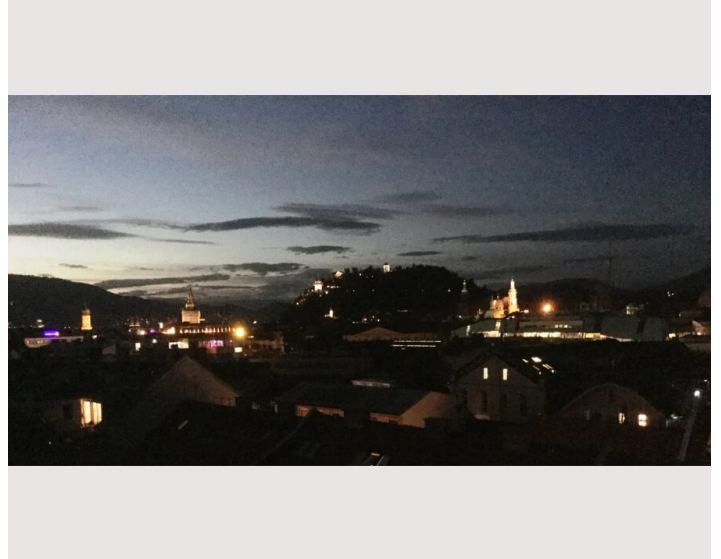
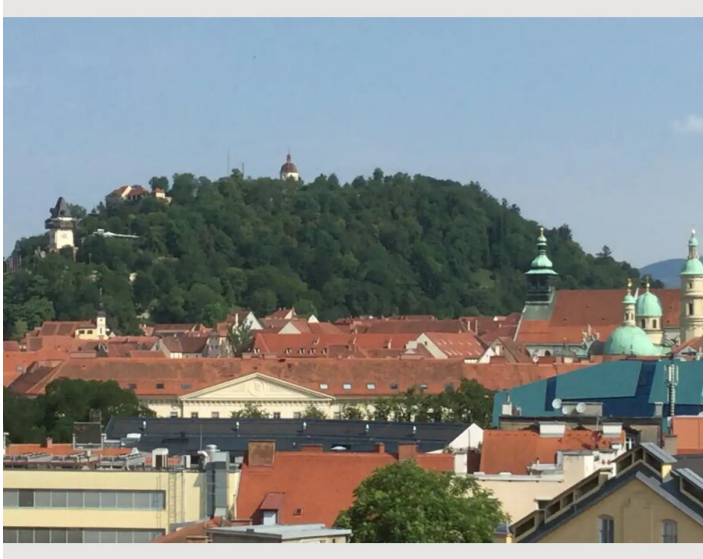
- Kitchenette
- Glasses/Tableware
- Dishwasher
- Cooking utensils
- Espresso machine
- Microwave

Informations

- Not suitable for children
- Short-term parking zone subject to a charge
- Private entrance
- Regular cleaning at extra cost
- Smoking not allowed
- Desk/Workplace
- Pets forbidden
- Bicycle room free of charge

Picture gallery





Infrastructure



In front of the building, there is a tram stop and a short-term parking zone (for a fee). For those arriving by car, there is a Park & Ride facility outside the city, or you can park in a nearby garage. Due to its proximity to the university, it is also well-suited for students and researchers.

Location

