



3 ROOM APARTMENT, 1120 VIENNA

3-Room Apartment with Indoor Garage on Schönbrunner Allee, in one of Vienna's most bohemian neighborhoods, nestled between Schönbrunn and Hetzendorf Palaces.

Object number: KZQQ1

[View and rent online](#)

3-room apartment for rent in Vienna's bohemian district, close to Schönbrunn and Hetzendorf Palaces. Stress free-parking as indoor garage is included.

Period	20/12/2025 - 20/01/2026
Number of persons	2
Total incl. VAT.	€ 2.478,71
Security deposit	€ 1.900,00



Living space

62m²



Maximum occupancy

8 Persons



Complete accommodation [?]

1 Private bathroom 2 Separated bedrooms 1 Living-Sleepingroom



2. floor



Check-in

16:00 - 20:00 Clock



Check-out

10:00 - 11:00 Clock

Sleeping options

Bedroom 1



2x Single bed

Bedroom 2



2x Single bed



1x Sofa bed (2 persons)

Living and sleeping



1x Sofa bed (2 persons)

Descripton of accommodation

This Vienna apartment is fully furnished and move-in ready, featuring 4 single beds, 2 extendable couches, 3 wardrobes, plus dining and office tables. It includes a bathroom with a bathtub, a separate toilet, and a fully equipped kitchen with a washer-dryer. Bed linens and towels are provided for convenience, making it ideal for a comfortable stay.

Equipment & Features

Basic equipment

- Internet/Wifi
- Private dryer
- Towels
- Garage
- Private washing machine
- Bedclothes
- Private toilet
- Vacuum cleaner

First supply

- Toilet paper

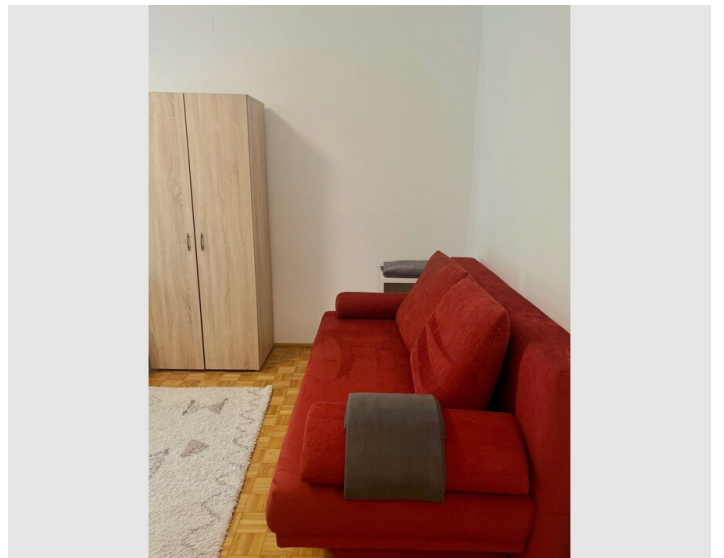
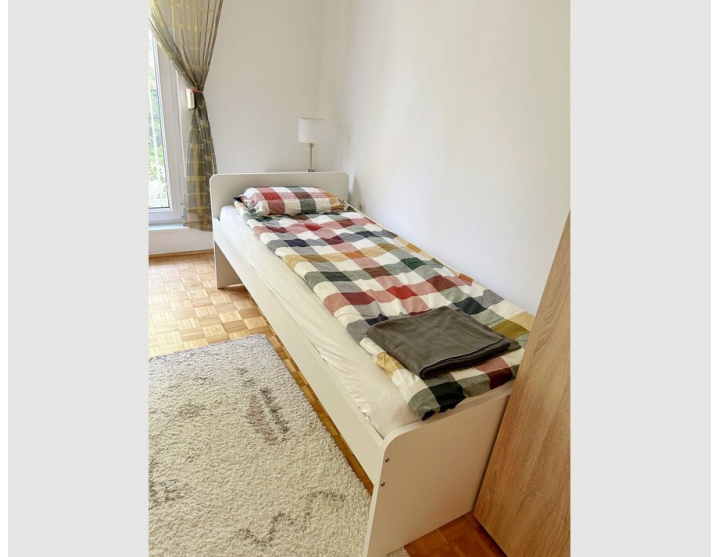
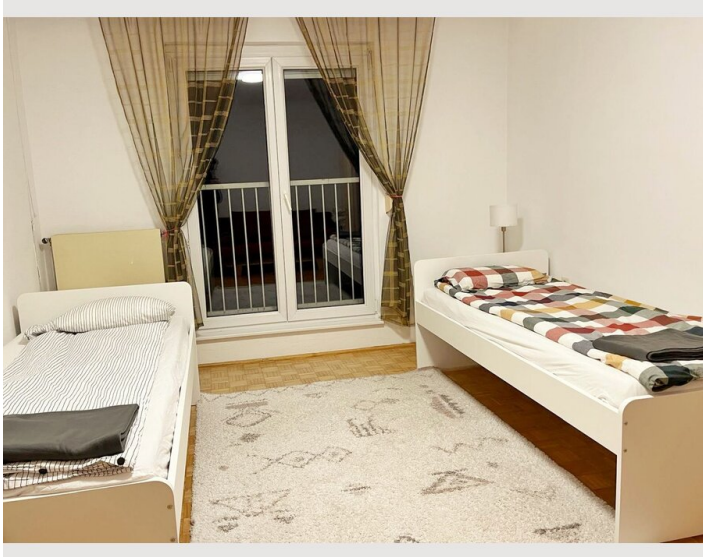
Kitchen

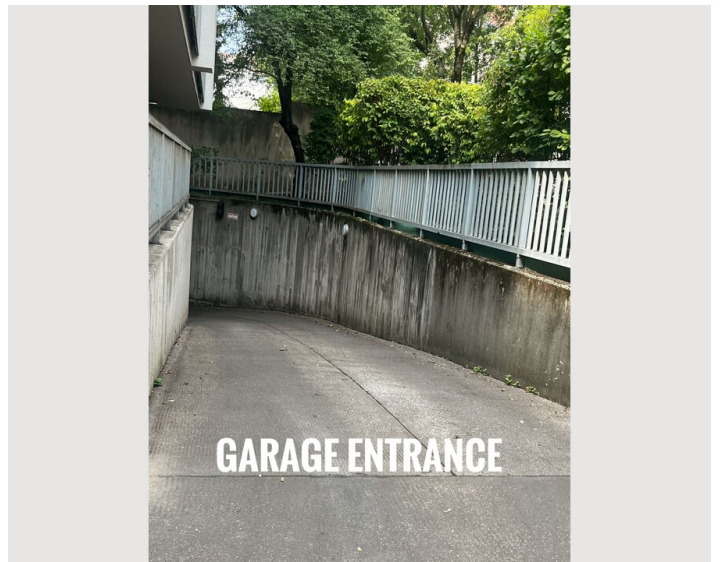
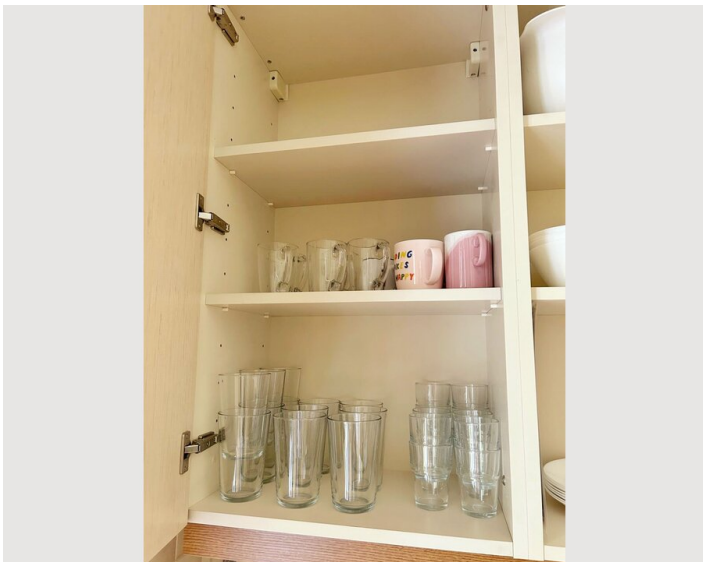
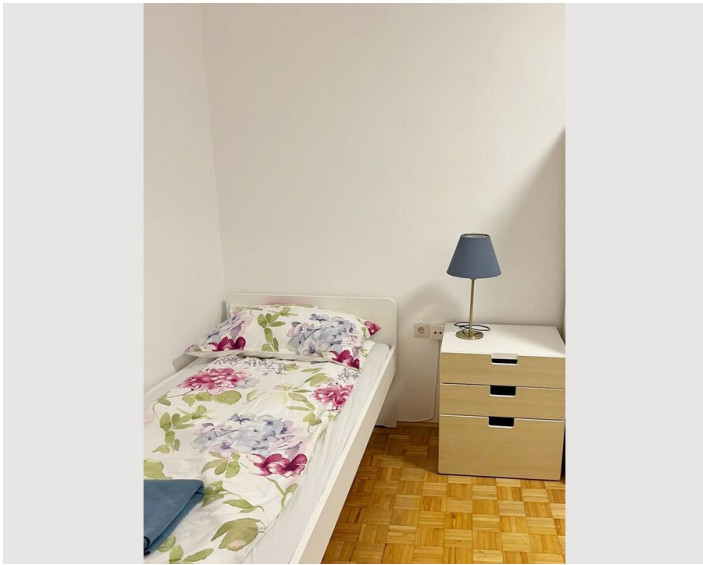
- Private kitchen
- Glasses/Tableware
- Cooking utensils
- Dishwasher

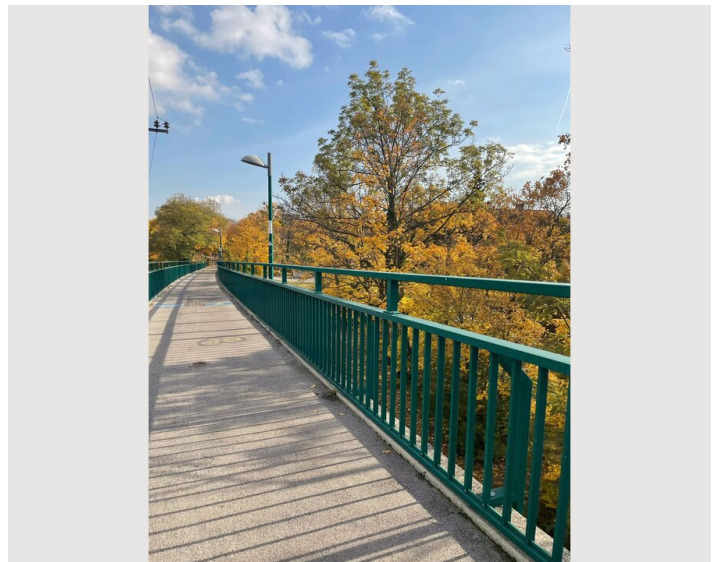
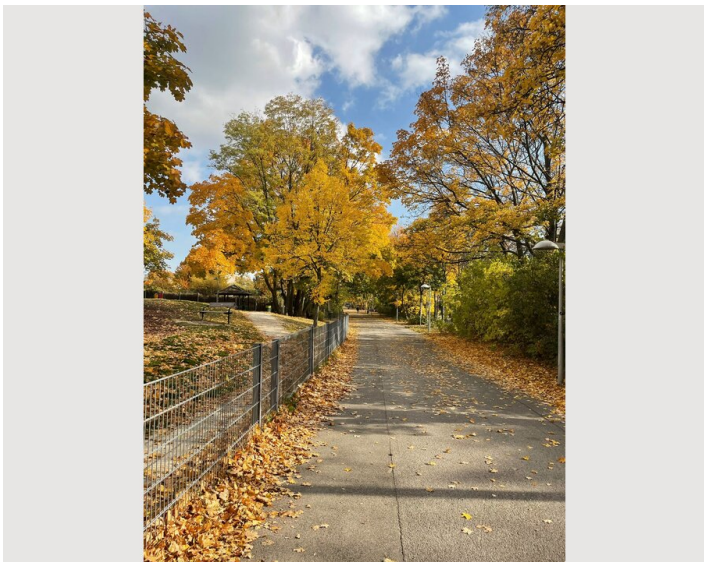
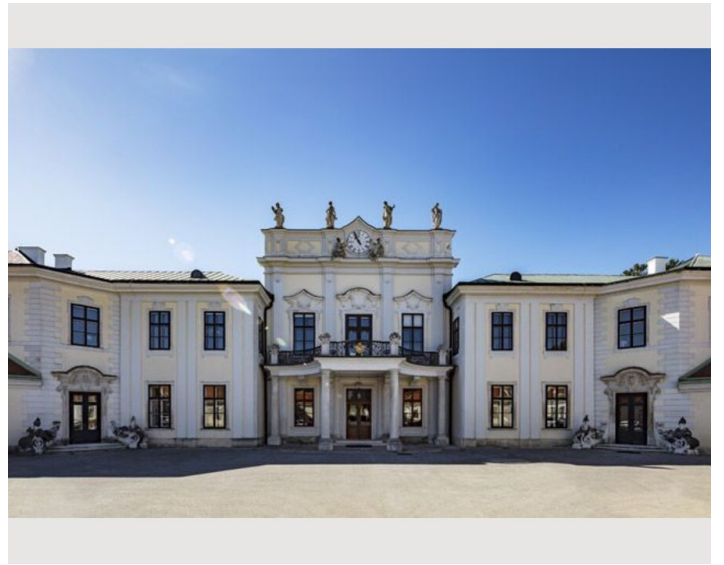
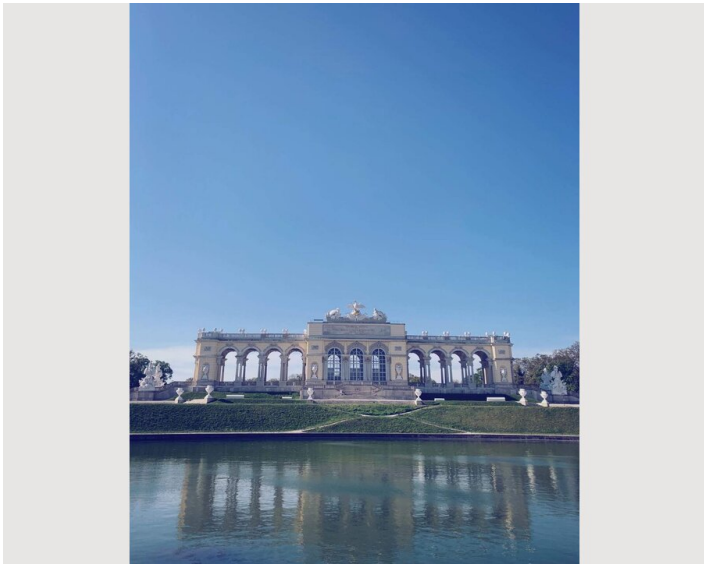
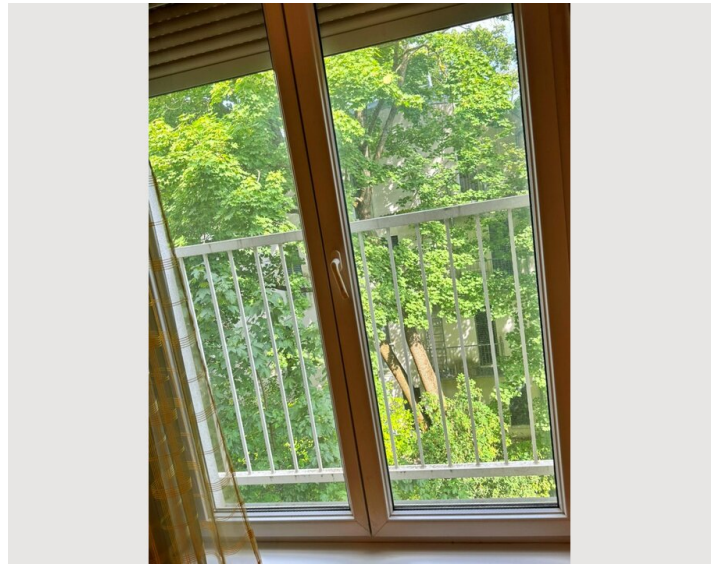
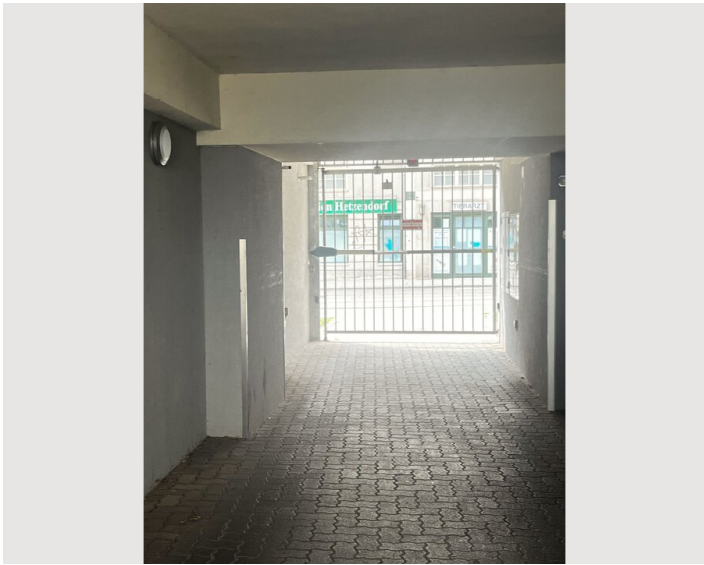
Informations

- Suitable for construction workers
- Desk/Workplace
- Regular cleaning at extra cost
- Suitable for children
- Pets forbidden

Picture gallery










Infrastructure

 SPAR, Hofer, Billa, Billa, DM

 S-Bahn Vienna Hetzendorf: S1, S2, S3, S4.

 Vienna Meidling Station: Intercity, Railjet, S-Bahn.

Excellent transport links with a bus and tram station only 1 minute away, and the Schnellbahn just 5 minutes away.

Enjoy coffee shops, bakeries, pharmacies, grocery stores, and restaurants all within a 1-5 minute walk.

Quick access to bike lanes makes exploring the beautiful surroundings easy and enjoyable.

Location

