



2 ZIMMER WOHNUNG, 4020 LINZ

Living near the main train station and theater

Object number: ZINU1

[View and rent online](#)

Period	02/06/ - 02/07/2025
Number of persons	2
Total incl. VAT.	€ 1.730,13
Security deposit	€ 1.200,00

This cozy and modern 2-room apartment is centrally located, 5 minutes from the theater, 10 minutes from the main train station and the Landstraße. It is ideal for singles or couples looking for a well-kept home in the city.



Living space

60m²



Maximum occupancy

2 Persons



Complete accommodation [?]

1 private bathroom 1 Separated bedroom



2. floor

Elevator available



Check-in

08:00 - 18:00 Clock



Check-out

08:00 - 18:00 Clock

Sleeping options

Sleeping room



1x Double bed (1,60 m x 2 m)

Description of accommodation

This cozy and modern 2-room apartment is centrally located, 5 minutes from the theater, 10 minutes from the main train station and the Landstraße. It is ideal for singles or couples looking for a well-kept home in the city.

Equipment features



Basic equipment

- Balcony
- Music system/docking station
- Private washing machine
- Bedclothes
- Private toilet
- Vacuum cleaner
- Cleaning utensils
- Loggia
- TV
- Private dryer
- Towels
- On the road without time limit without any cost
- Iron & ironing board
- Hairdryer



First supply

- Toilet paper
- Nespresso capsules
- Soap



Kitchen

- Private kitchen
- Glasses/Tableware
- Dishwasher
- Cooking utensils
- Espresso machine

Informations

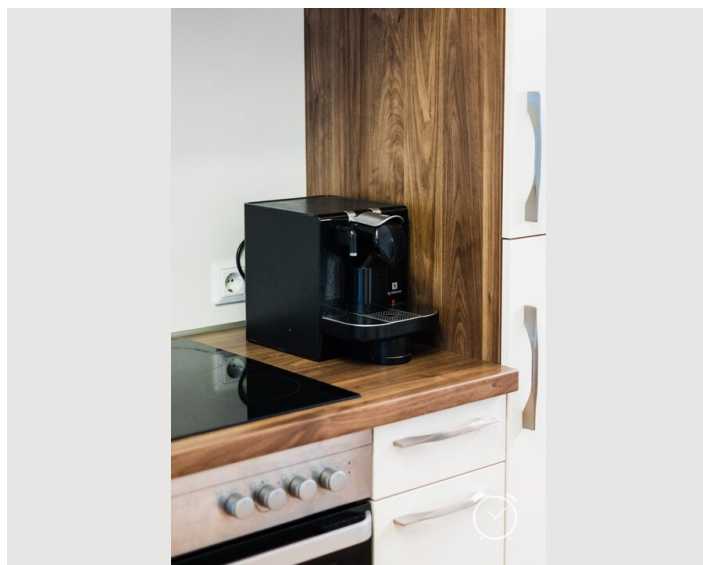
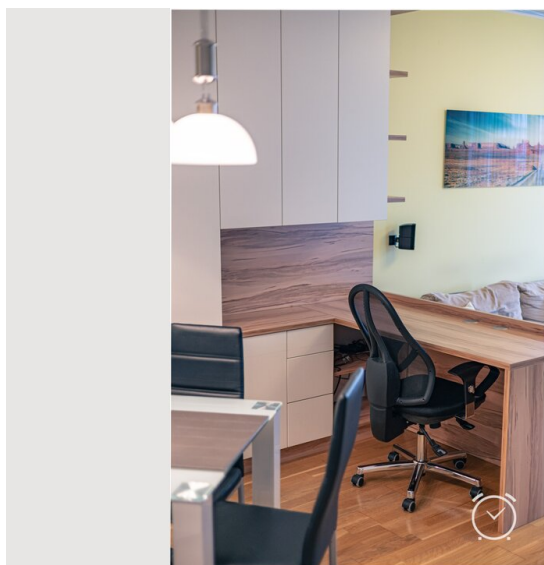
- Smoking not allowed
- Desk/Workplace
- Regular cleaning at extra cost
- Free short-term parking zone
- Pets on request
- Bicycle room free of charge

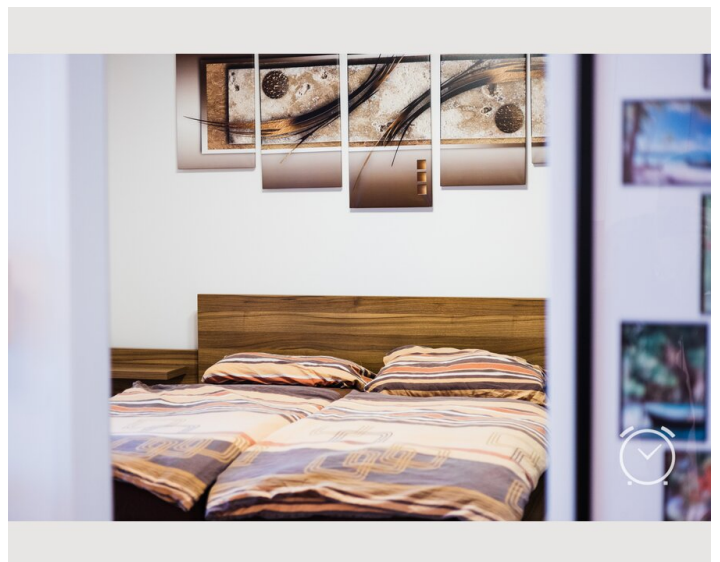
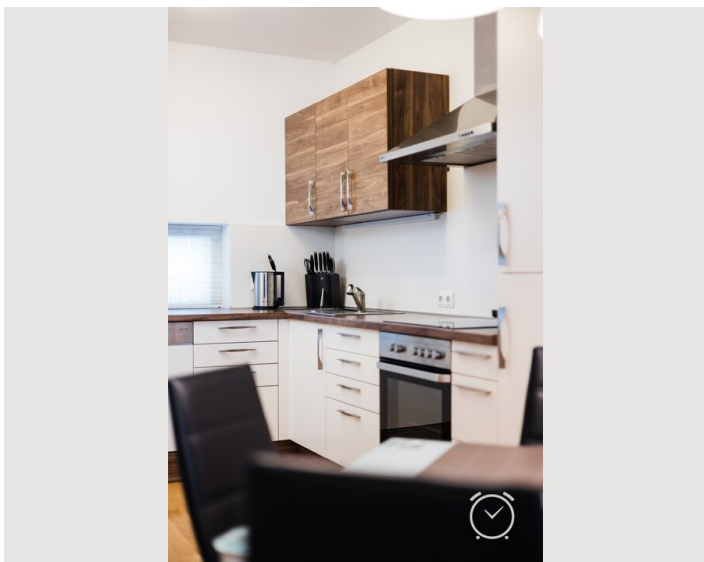
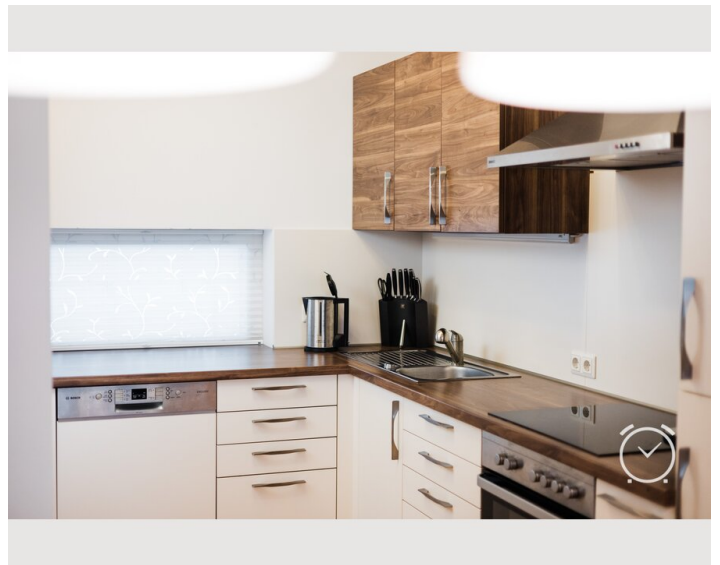
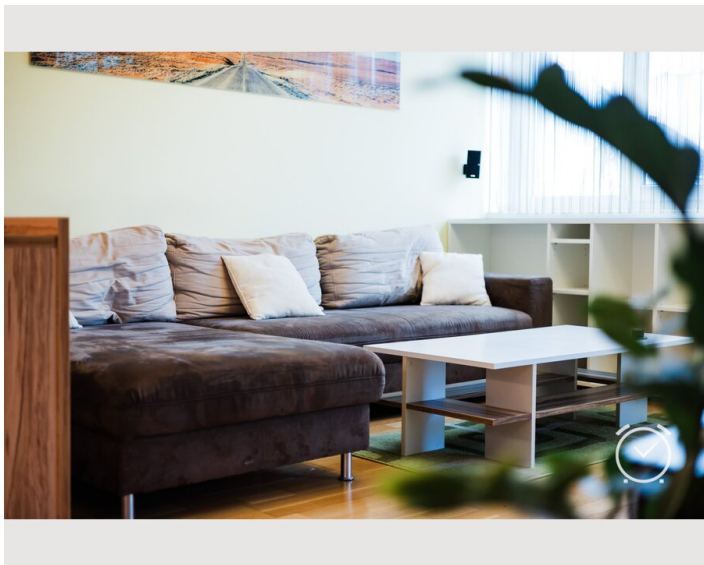
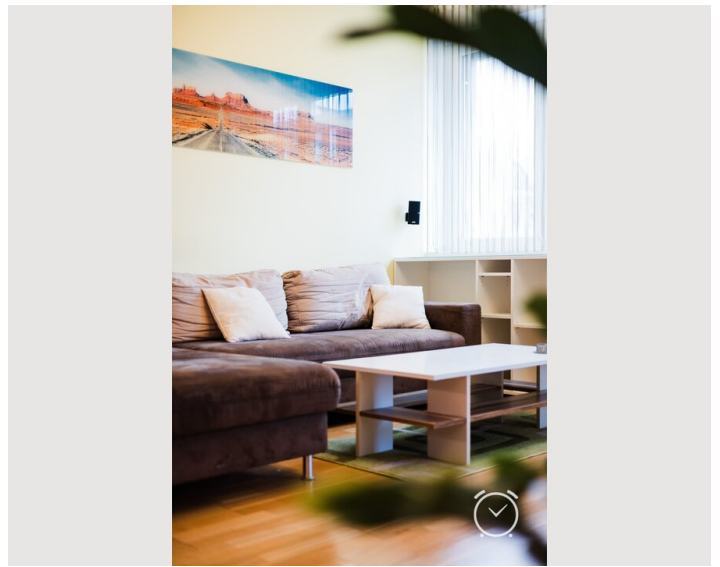
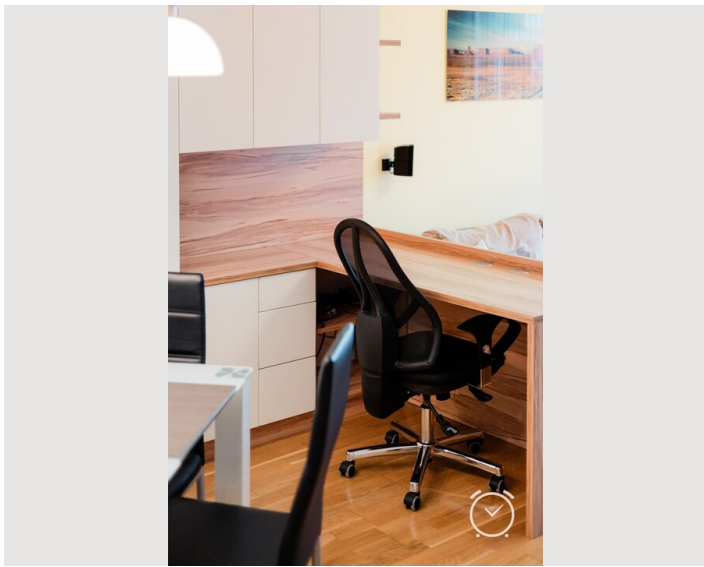
Additional services

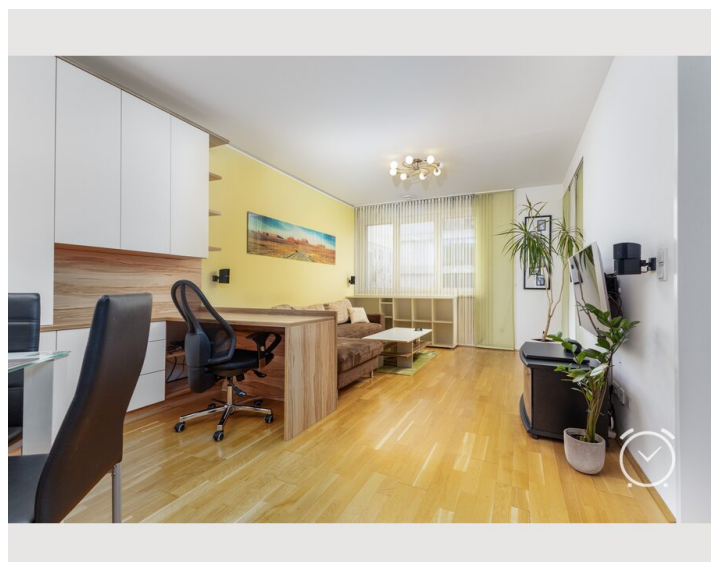
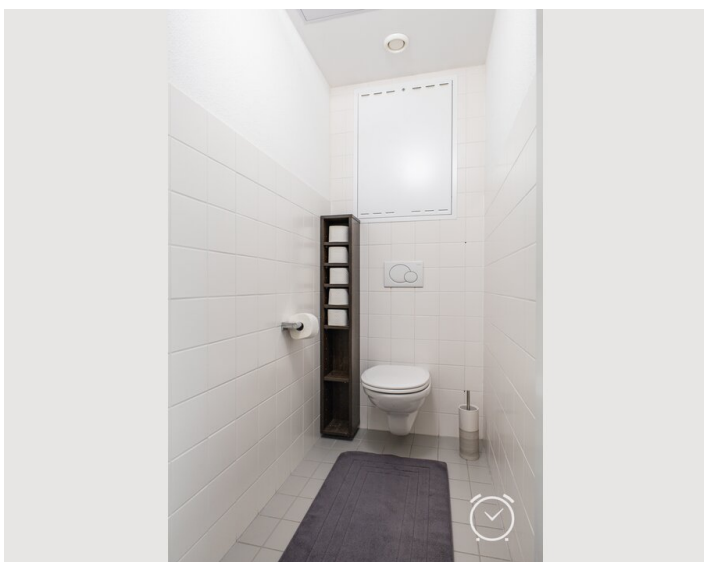
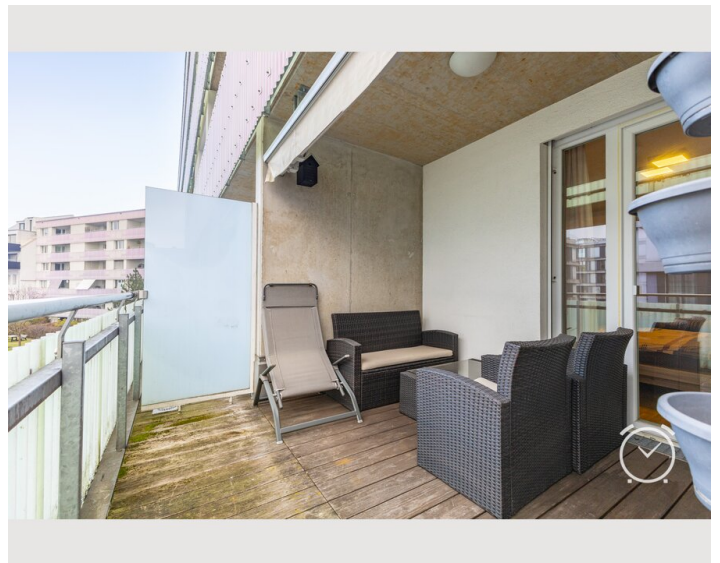
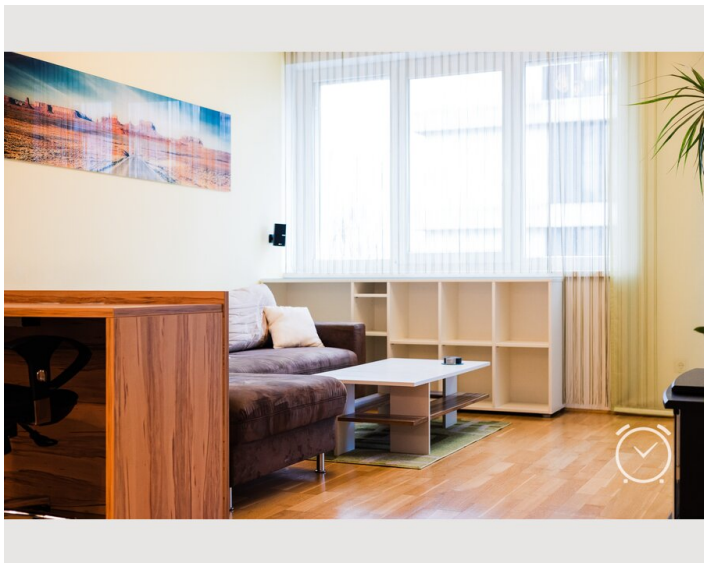
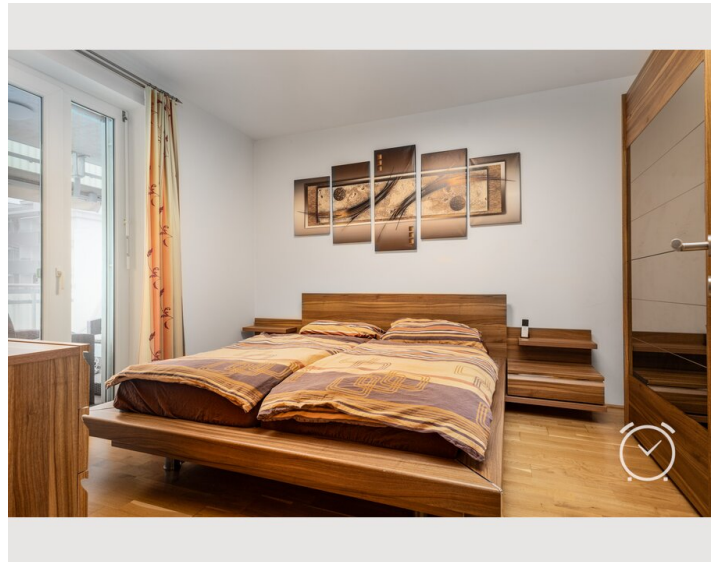
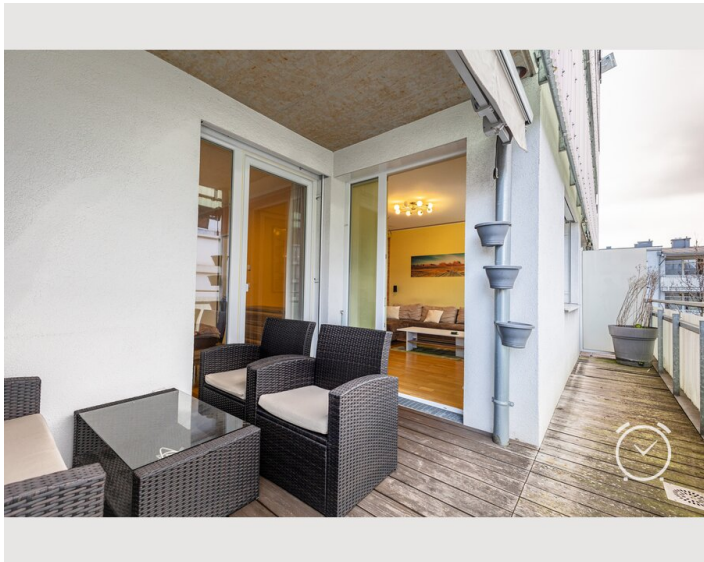
- garage space (€ 100,00)

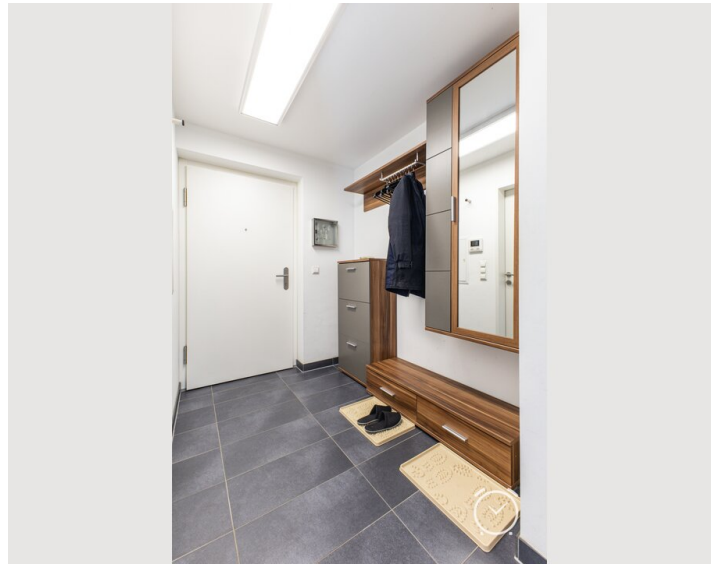
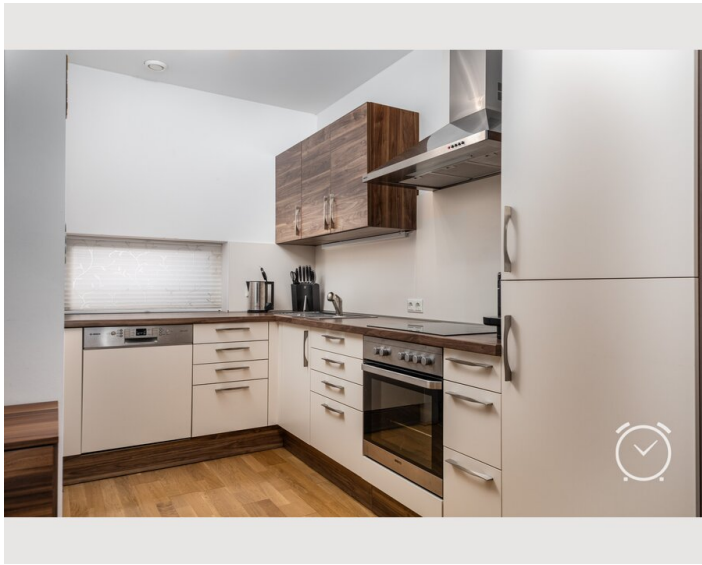
All prices are gross per month - billing is done directly with the lessor.

Picture gallery









Video

Goto Video



Infrastructure



10 minutes on foot



in front of the house



15 minutes on foot



5 minutes on foot

Shopping facilities, public transport and leisure activities are all within easy walking distance. The proximity to the Donaupark and other green spaces such as the Volksgarten offers relaxation in an urban environment.

Location

