



2 ROOM APARTMENT, 9020 KLAGENFURT

## Studio apartment with balcony, old building charm, quiet, close to center and train station, Internet

Object number: TBPY1

[View and rent online](#)

The apartment has a double bed, cupboards, a work table, a fully equipped kitchen and bathroom with toilet and a washing machine. There is also a spacious basement room available on request.

<b>Period</b>	09/06/ - 09/07/2026
<b>Number of persons</b>	2
<b>Total incl. VAT.</b>	€ 1.268,62
<b>Security deposit</b>	€ 1.000,00



### Living space

50m<sup>2</sup>



### Maximum occupancy

2 Persons



### Complete accommodation <sup>?</sup>

1 Private bathroom 1 Separated bedroom



### 1. floor

Elevator available



### Check-in

14:00 - 20:00 Clock



### Check-out

07:00 - 12:00 Clock

## Sleeping options

### Sleeping room



1x Double bed (1,80 m x 2 m)

## Description of accommodation

Spacious entrance hall - large kitchen - small balcony in the quiet courtyard - bathroom (shower) with toilet - washing machine and dryer - a bedroom/workroom, all with old building charm for 2 people and on 50 m<sup>2</sup>. Gas boiler for hot water and heating.

### Equipment & Features

#### Basic equipment

- Balcony
- Private washing machine
- Private toilet
- Iron & ironing board
- Hairdryer
- Internet/Wifi
- Towels
- Vacuum cleaner
- Cleaning utensils

#### First supply

- Toilet paper
- Nespresso capsules
- Soap

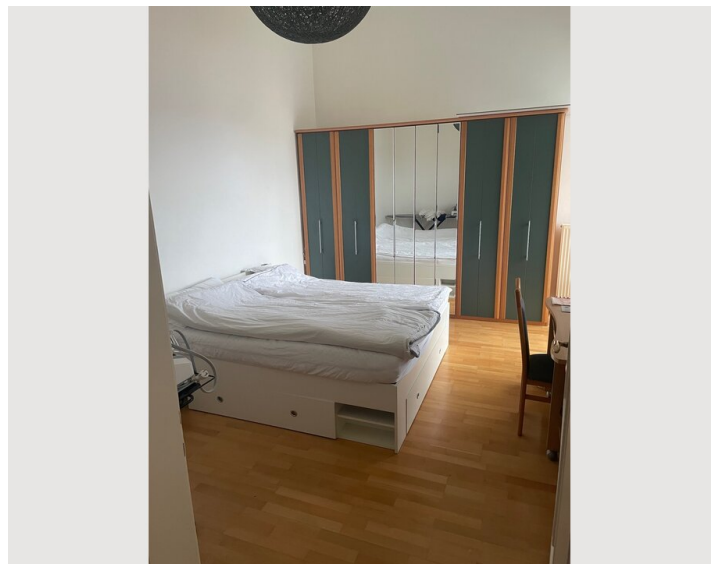
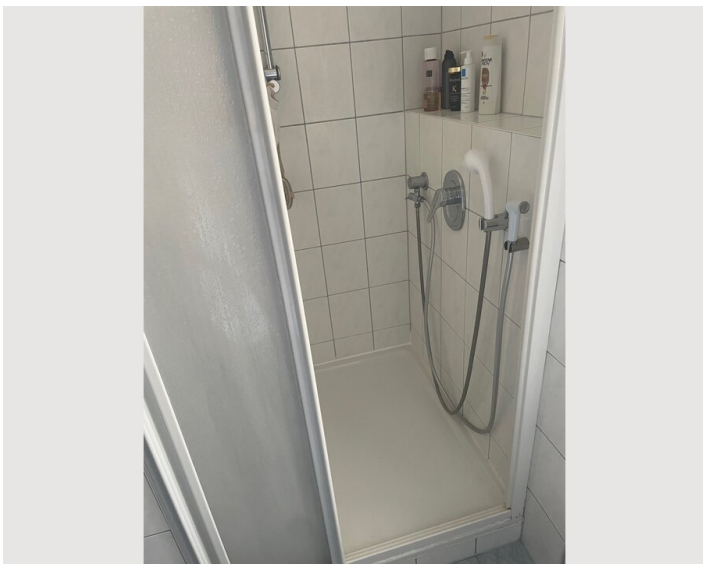
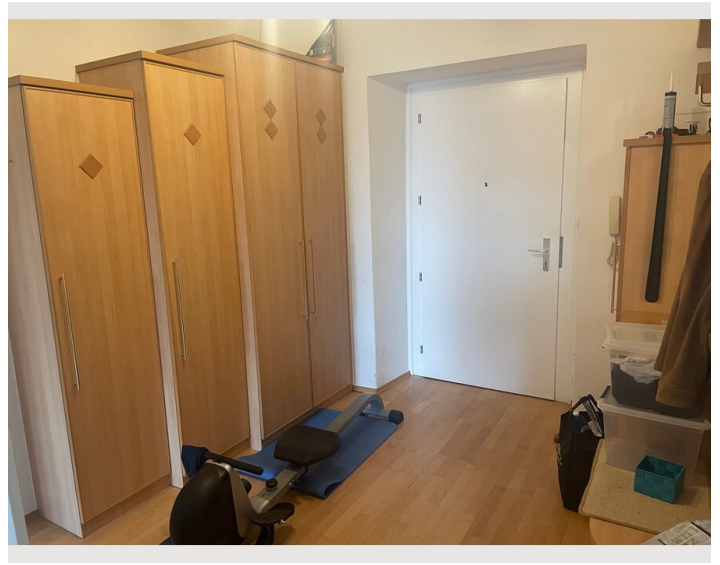
#### Kitchen

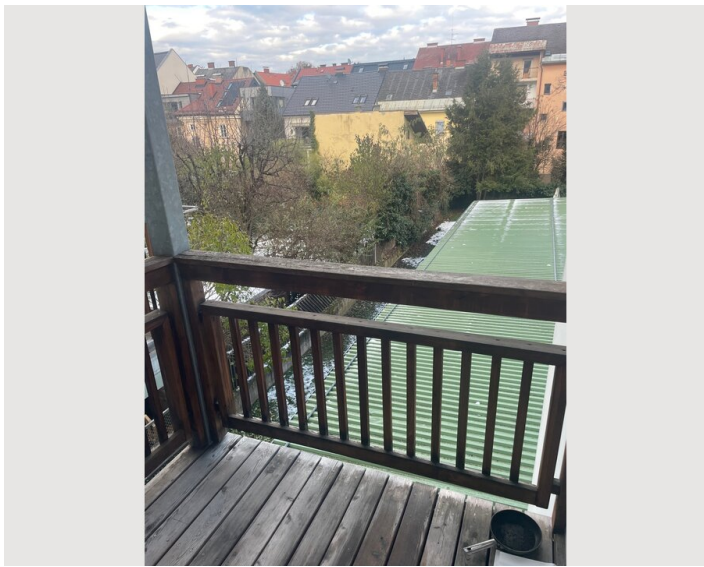
- Private kitchen
- Glasses/Tableware
- Dishwasher
- Cooking utensils
- Coffee machine

## Informations

- Suitable for construction workers
- Short-term parking zone subject to a charge
- Private entrance
- Regular cleaning at extra cost
- Smoking not allowed
- Desk/Workplace
- Pets on request

## Picture gallery







### Infrastructure

 4 min walking distance

 4 min walking distance

 120 m

 12 min by car

 7 min walking distance

---

This pleasant apartment with a balcony overlooking the quiet inner courtyard is located on Bahnhofstrasse, near the state government in the Sparkasse building on the 1st floor (elevator is half-floor) and close to the main train station. The center is a 7-minute walk away and the Klagenfurt trade fair is a 5-minute walk away, as are various shops and grocery stores.

## Location

