



2 ZIMMER WOHNUNG, 3100 ST PÖLTEN

## Ronovated and full equiped appartement

Object number: OIZA1

[View and rent online](#)

<b>Period</b>	30/07/ - 30/08/2025
<b>Number of persons</b>	2
<b>Total incl. VAT.</b>	€ 2.500,00
<b>Security deposit</b>	€ 1.800,00

2 room apartment fully equipped at the Kaiserwald. - Fully equipped kitchen - Washing machine - Eat-in kitchen - TV/Internet - Barrier-free



### Living space

65m<sup>2</sup>



### Maximum occupancy

2 Persons



### Complete accommodation <sup>?</sup>

1 private bathroom 1 Separated bedroom



### 1. floor

Elevator available



### Check-in

16:00 - 20:00 Clock



### Check-out

10:00 - 11:00 Clock

## Sleeping options

### Sleeping room



1x Double bed (1,80 m x 2 m)

## Descripton of accommodation

The beautiful, renovated 2-room apartment is barrier-free on the first floor. Equipped with parquet floors and Italian tiles and fully furnished with everything you need for life.

The eat-in kitchen is equipped with a TV, desk, sofa, dining table and kitchen.

The rent includes heating, electricity and internet.

A parking space can optionally be rented under the building.

Cleaning and cleaning can also be booked.

## Equipment & Features



### Basic equipment

- Internet/Wifi
- Private washing machine
- Towels
- Parking space
- Hairdryer
- TV
- Bedclothes
- Private toilet
- Iron & ironing board



### First supply

- Toilet paper
- Soap
- shampoo
- Nespresso capsules



### Kitchen

- Private kitchen
- Glasses/Tableware
- Dishwasher
- Cooking utensils
- Espresso machine
- Microwave

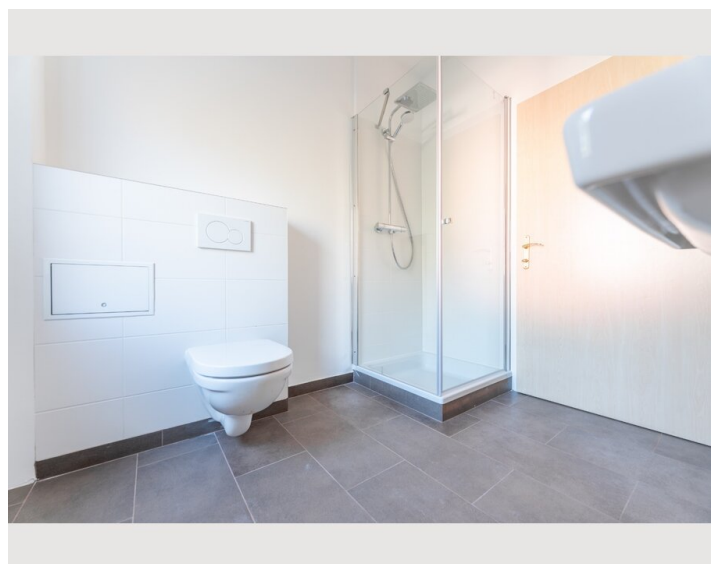
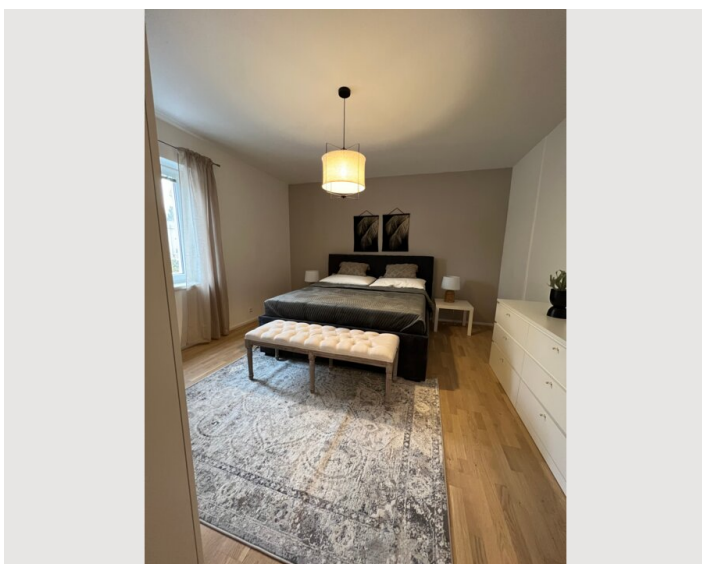
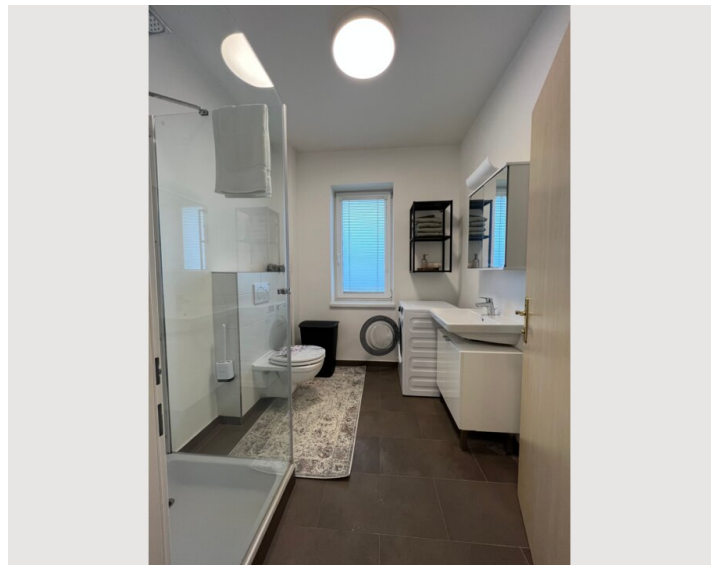
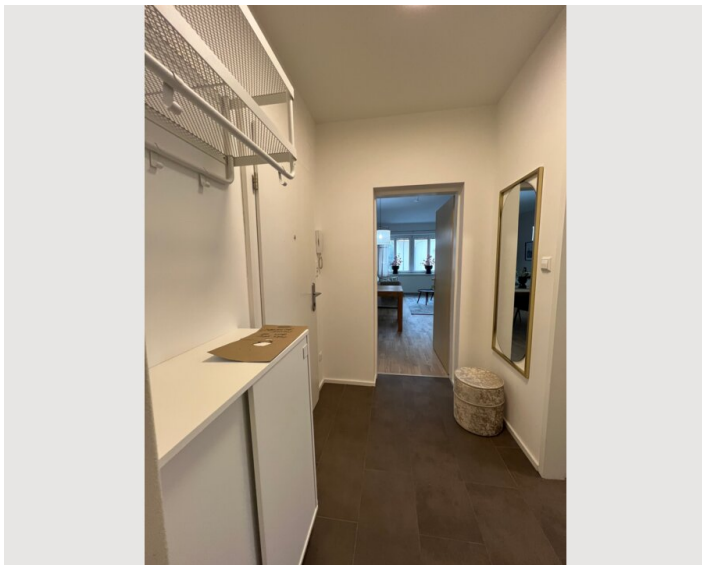
## Informations

- Suitable for construction workers
- Smoking not allowed
- Private entrance
- Regular cleaning at extra cost
- Suitable for children
- Desk/Workplace
- Pets forbidden
- Bicycle room free of charge

## Additional services

All prices are gross per month - billing is done directly with the lessor.

## Picture gallery





### Infrastructure



The Alpine train station is in the immediate vicinity and bus stops are within easy walking distance. The nearest supermarkets are approx. 1km away, as is the city center. There are also very good restaurants nearby.



Location

