

4 ROOM APARTMENT AND MORE, 6850 DORNBIRN

## 130sqm / 4 room apartment Dornbirn Oberdorf

Object number: YNNQ1

[View and rent online](#)

The 25-year-old apartment is located close to the center in the upper village of Dornbirn. It is very generously proportioned and is ideal for families who want plenty of space.

<b>Period</b>	25/06/ - 25/07/2026
<b>Number of persons</b>	2
<b>Total incl. VAT.</b>	€ 3.113,38
<b>Security deposit</b>	€ 2.300,00



### Living space

130m<sup>2</sup>



### Maximum occupancy

4 Persons



### Complete accommodation <sup>?</sup>

1 Private bathroom 2 Separated bedrooms



### 1. floor



### Check-in

09:00 - 21:00 Clock



### Check-out

09:00 - 12:00 Clock

## Sleeping options

### Bedroom 1



1x Double bed (1,80 m x 2 m)

### Bedroom 2



1x Double bed (1,40 m x 2 m)

## Descripton of accommodation

The apartment has two bedrooms (a large master bedroom with balcony, a children's room), a bathroom (shower, whirlpool bath, WC), a separate WC, a small room for washing machine & shoe cupboard, a large eat-in kitchen, a large conservatory (study) with terrace access, a cellar compartment and a parking space. There is also a visitor's parking space.

## Equipment & Features



### Basic equipment

- Balcony
- Winter garden
- Private washing machine
- Private toilet
- Vacuum cleaner
- Cleaning utensils
- Terrace
- TV
- Private dryer
- Private parking space
- Iron & ironing board
- Hairdryer



### Fireplace

- Tiled stove



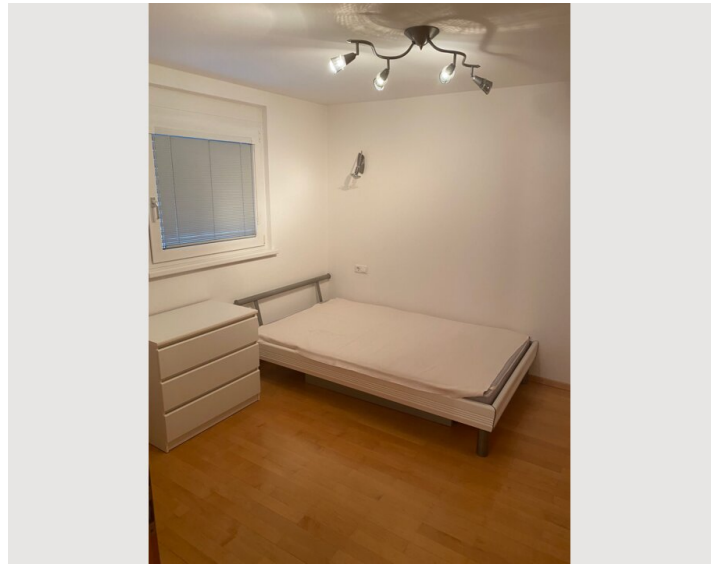
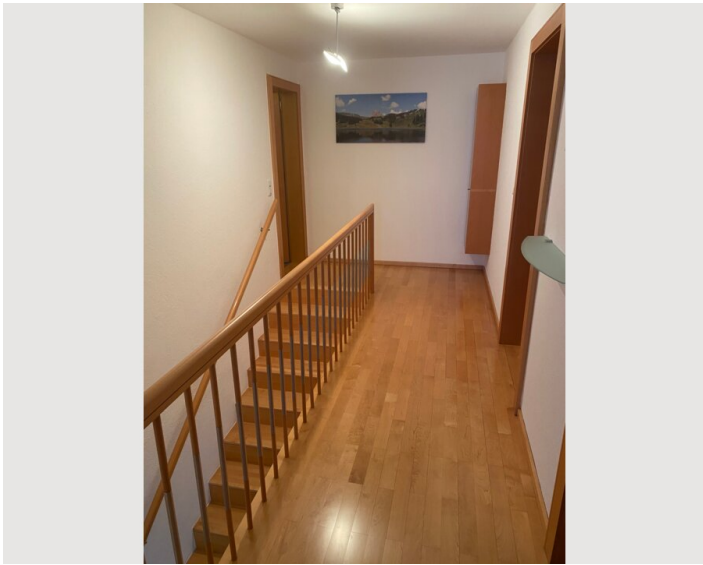
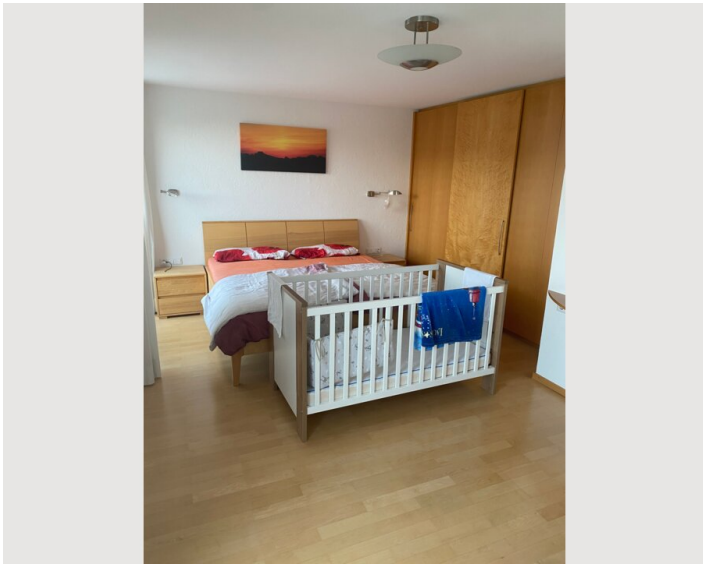
### Kitchen

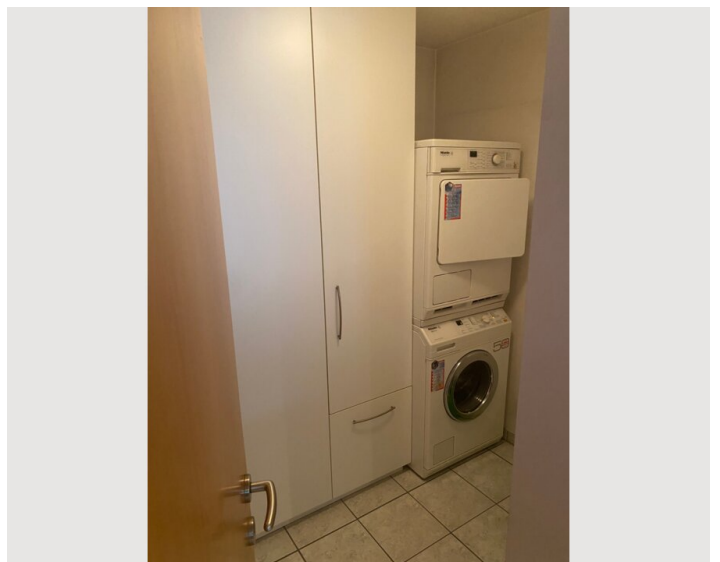
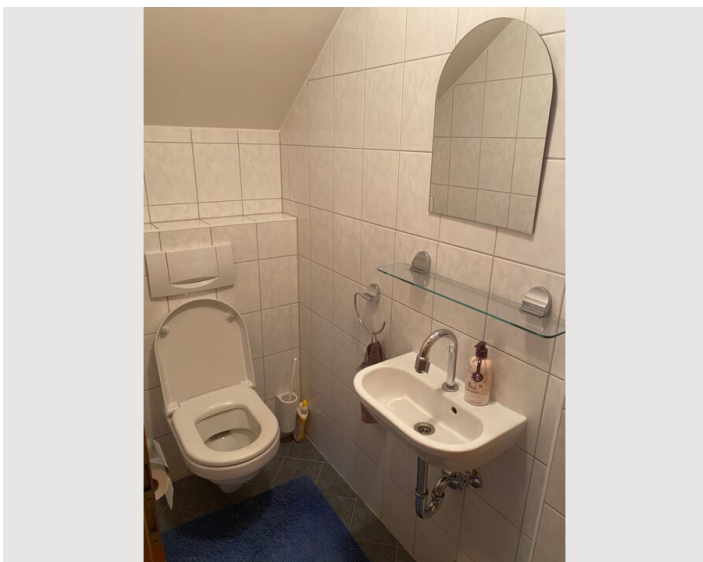
- Private kitchen
- Glasses/Tableware
- Microwave
- Cooking utensils
- Dishwasher

## Informations

- Suitable for children
- Pets forbidden
- Smoking not allowed
- Bicycle room free of charge


## Picture gallery









### Infrastructure

 Around the corner.

 10 minute walk.

 Around the corner.

---

Two supermarkets are within a 5-10 minute walk. Several bus stops are also just a few minutes away. The town is a 10-minute walk away. The train station is a 15-minute walk or 7 minutes by bus or bicycle. The nearest pharmacy is a 10-minute walk away.

## Location

