



2 ZIMMER WOHNUNG, 1190 VIENNA

Close to the Citycenter and Wienerwald

Object number: MKCS1

[View and rent online](#)

Nice oldstyle Apartment with fully equipped Kitchen, separate Bedroom. Bathroom equipped with shower and toilet. Washingmachine available

Period	12/07/ - 12/08/2025
Number of persons	2
Total incl. VAT.	€ 2.675,69
Security deposit	€ 1.900,00



Living space

41m²



Maximum occupancy

4 Persons



Complete accommodation [?]

1 private bathroom 1 Separated bedroom 1 Living-Sleepingroom



3. floor



Check-in

11:00 - 09:00 Clock



Check-out

09:00 - 11:00 Clock

Sleeping options

Sleeping room



1x Double bed (1,60 m x 2 m)

Living and sleeping



1x Double bed (1,40 m x 2 m)



1x Single bed

Descripton of accommodation

Nice oldstyle apartment in the third floor of a classic „Zinshaus“ in the 19th district.

The apartment is fully equipped with a Double bed, a separate convertible couch in the livingroom with an extra small couch availabe.

Diningtable for four persons.

The kitchen is fully equipped for four persons as well.

Despite you are next to the mainstreet, the apartment is cosy and quiet.

Equipment & Features



Basic equipment

- Internet/Wifi
- Bedclothes
- Private toilet
- Hairdryer
- Private washing machine
- Towels
- Private parking space



First supply

- Toilet paper
- Soap
- Fridge filling on request
- shampoo
- Nespresso capsules



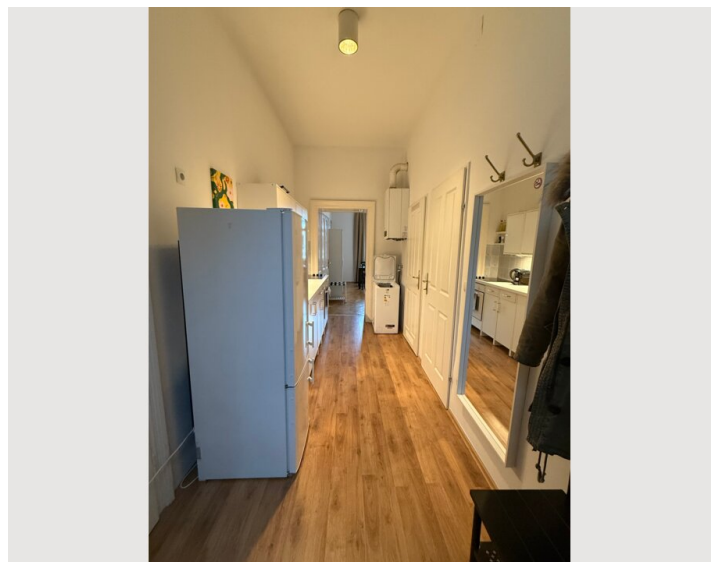
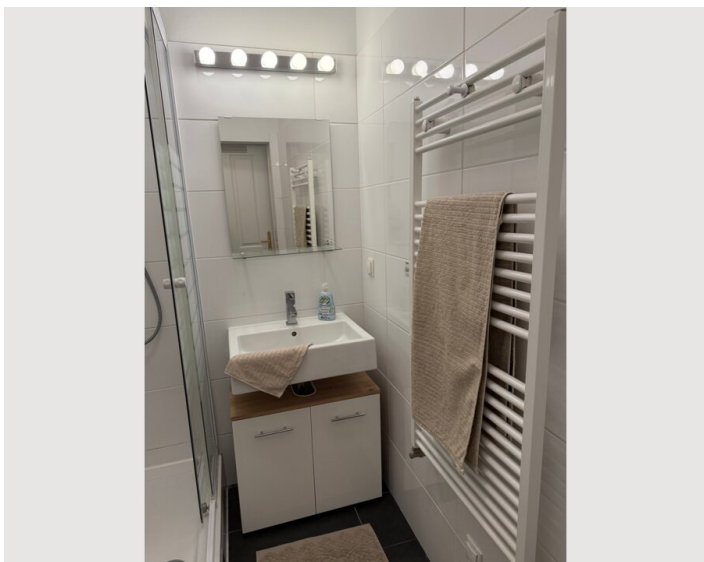
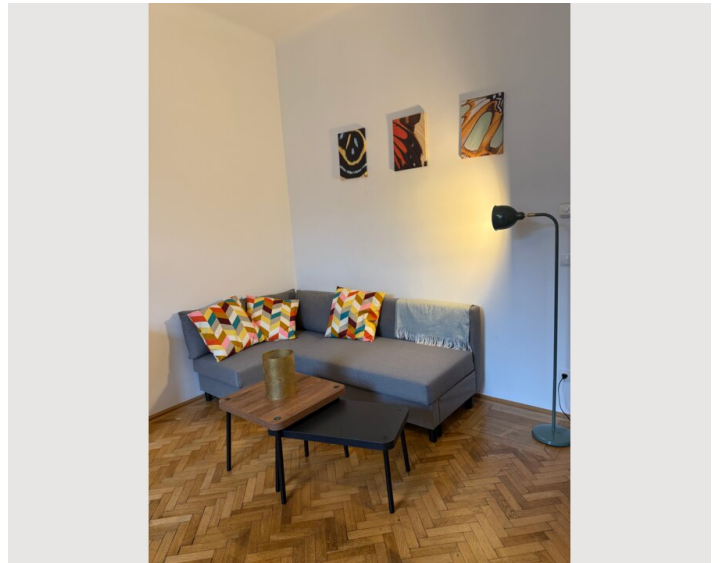
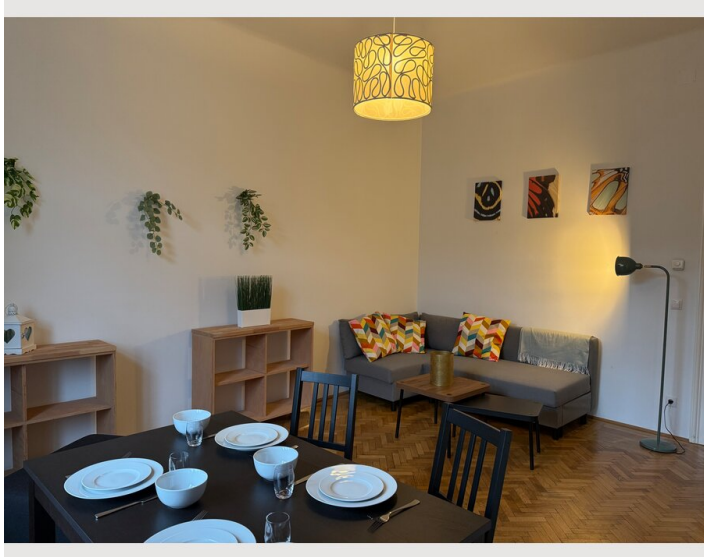
Kitchen

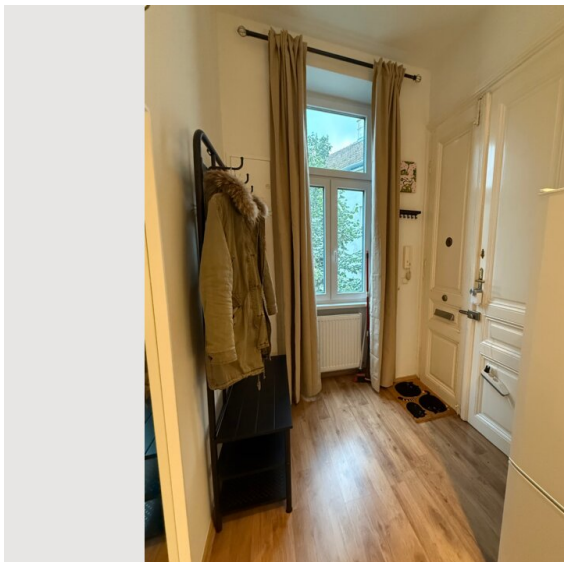
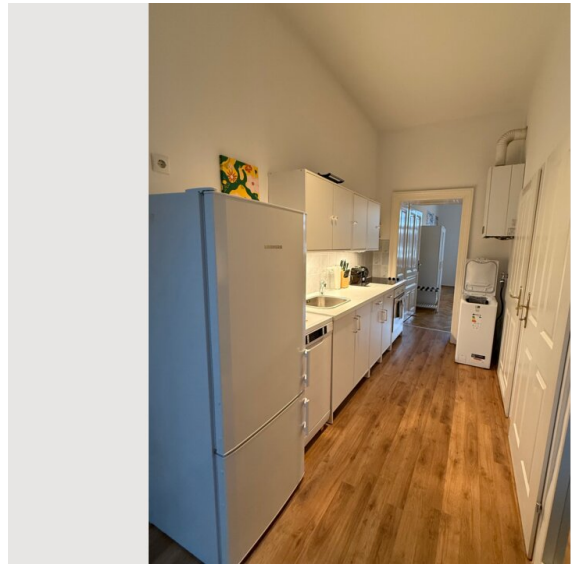
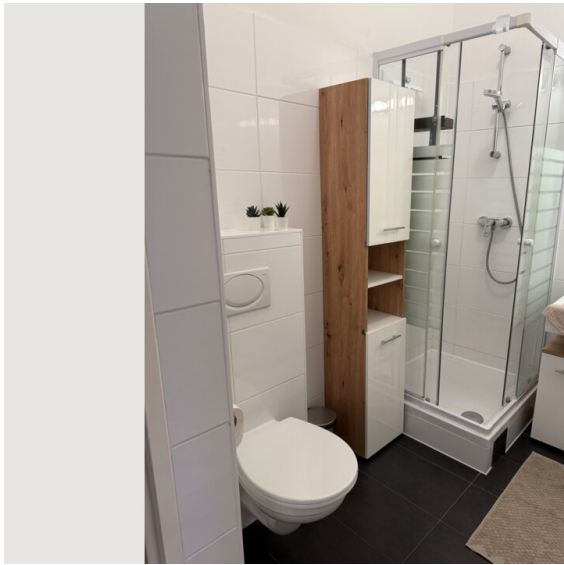
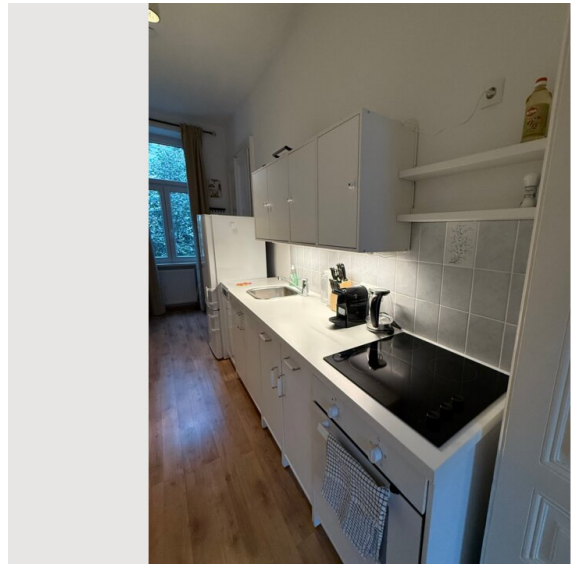
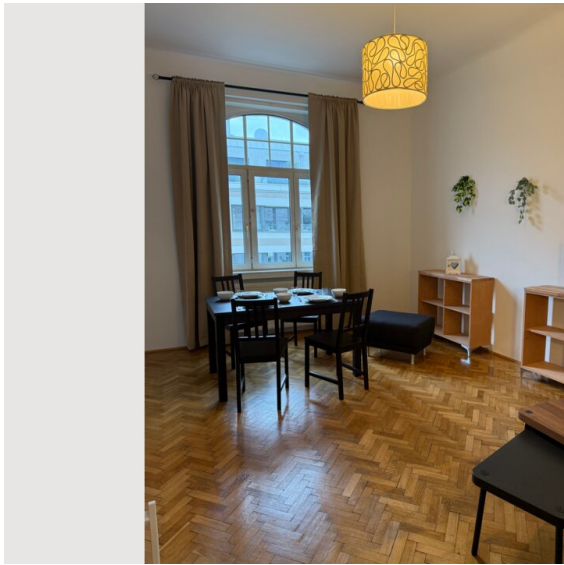
- Private kitchen
- Glasses/Tableware
- Dishwasher
- Cooking utensils
- Espresso machine

Informations


- Smoking not allowed
- Regular cleaning at extra cost

Picture gallery





Infrastructure

 Hardtgasse - 10A, 35A, 38

 Fischerbräu - indeed essential hydration

 Billa Supermarket

 Spittelau

 Sisi Pizza

In the close vicinity of the house you will find anything you need.

Public transport in less than 1min walking distance (Bus, Tram) in approximately 8min underground Spittelau.

Parks, woods and vineyards are close and easily reachable within a few minutes with the bus; Grinzing in approx 8min with the tram.

Going to the city center needs about 15 to 20 min by tram - so you are located quite well to do everything by public transports.

Restaurants, Bars and Shopping (like supermarket, pharmacy, coiffeur) is just across the street.

As well the included parking lot.

Location

