



2 ROOM APARTMENT, 1050 VIENNA

## Margarets Apartment

Object number: MAAP1

[View and rent online](#)

Beautiful, newly renovated apartment in the heart of the 5th district, right next to the Schlossquadrat. Supermarket directly opposite. Many restaurants, bars and shops in the immediate vicinity. Very good public transport connections.

<b>Period</b>	25/06/ - 25/07/2026
<b>Number of persons</b>	2
<b>Total incl. VAT.</b>	€ 2.239,04
<b>Security deposit</b>	€ 1.700,00



### Living space

50m<sup>2</sup>



### Maximum occupancy

4 Persons



### Complete accommodation <sup>?</sup>

1 Private bathroom 1 Separated bedroom 1 Living-Sleepingroom



### 2. floor



### Check-in

14:00 - 19:00 Clock



### Check-out

08:00 - 11:00 Clock

## Sleeping options

### Sleeping room



1x Double bed (1,60 m x 2 m)

### Living & Sleeping



1x Sofa bed (2 persons)

## Descripton of accommodation

This lovingly furnished apartment consists of an entrance hall, bathroom, separate toilet, separate kitchen, a large living room and a bedroom. The apartment has been recently renovated and is heated by underfloor heating. All windows are new, triple-glazed and equipped with electric blinds.

The kitchen is fully equipped and has everything you need in terms of crockery, cookware and cutlery, as well as a stove, oven, dishwasher, microwave, fridge with freezer compartment, extractor hood, kettle, toaster and an espresso machine.

A washing machine is also available and is located in the kitchen under the fridge.

Living room with pull-out sofa bed, TV, dining table with four armchairs and work area; bedroom with double bed, wardrobe and clothes rail.

Internet/Wi-Fi are included.

## Equipment & Features



### Basic equipment

- Internet/Wifi
- Private washing machine
- Towels
- Vacuum cleaner
- Cleaning utensils
- TV
- Bedclothes
- Private toilet
- Iron & ironing board
- Hairdryer



### First supply

- Toilet paper
- Soap



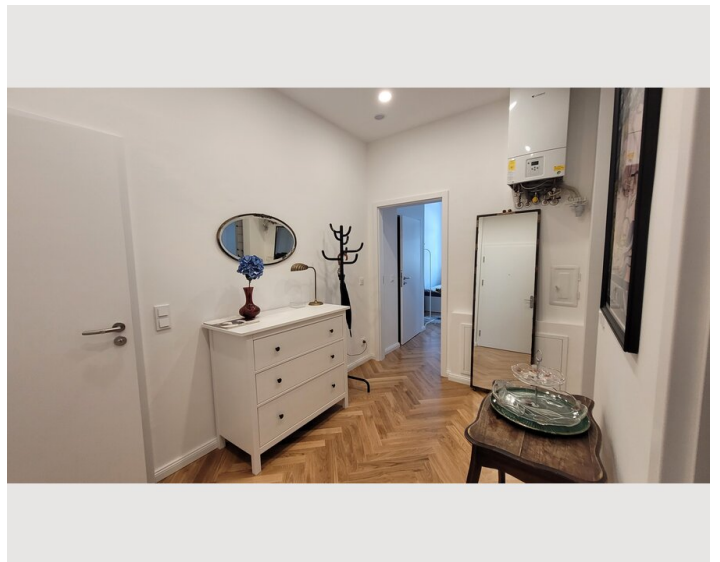
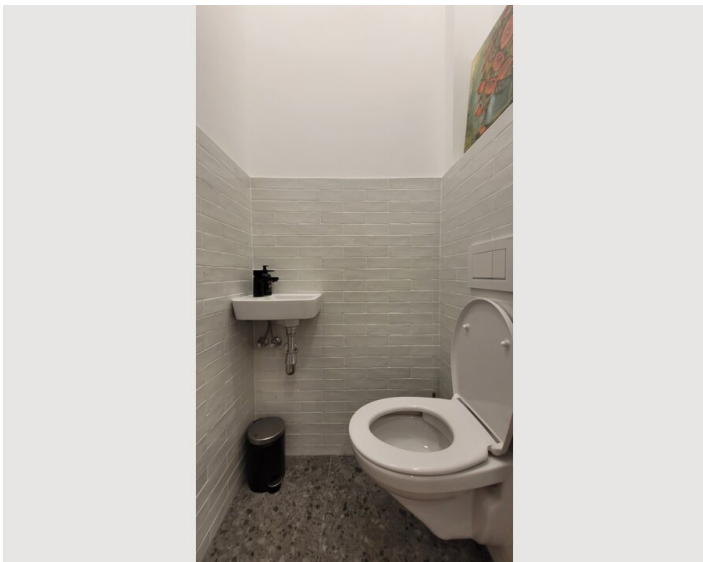
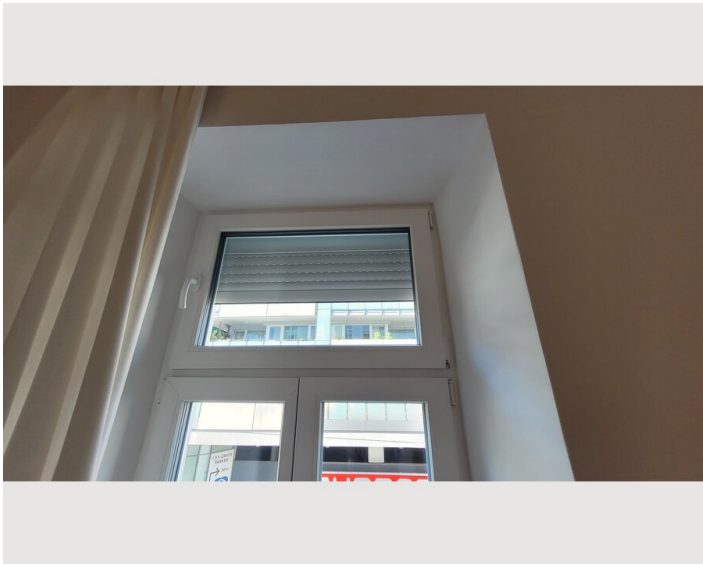
### Kitchen

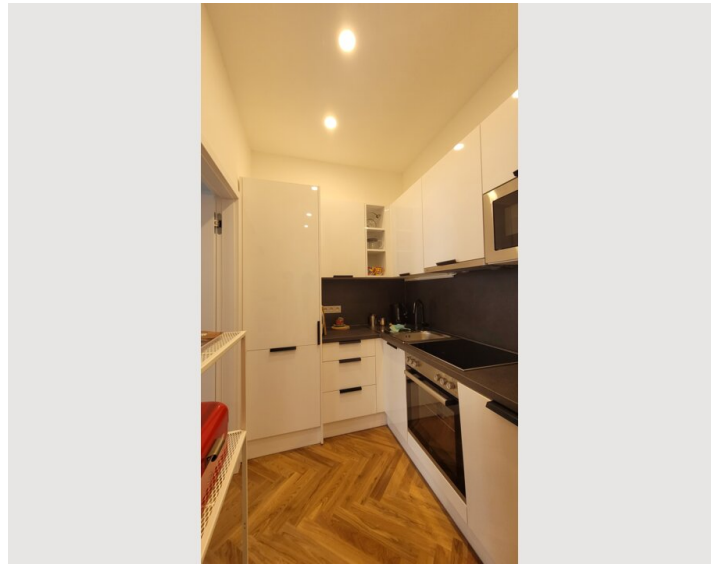
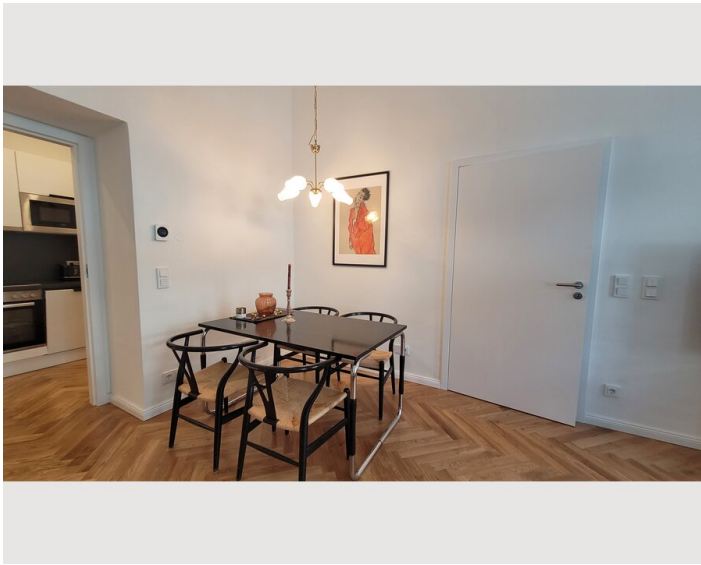
- Private kitchen
- Glasses/Tableware
- Dishwasher
- Cooking utensils
- Espresso machine
- Microwave

## Informations

- Suitable for construction workers
- Smoking not allowed
- Desk/Workplace
- Regular cleaning at extra cost
- Not suitable for children
- Short-term parking zone subject to a charge
- Pets forbidden
- Bicycle room free of charge

## Picture gallery






### Infrastructure

 directly opposite

 approx. 200m

 approx. 1.2km as the crow flies or 1.5km walking distance

---

There is a supermarket and a drugstore directly opposite.  
The nearest shopping street with many shops is just a few minutes' walk away.  
Bus station about 200 meters away, tram stop about 300 meters away.  
Vienna Central Station is about 1.2km as the crow flies or about 1.5km on foot.

## Location

