



2 ZIMMER WOHNUNG, 1150 VIENNA

2-room apartment, near U3 / U6 Westbahnhof / Mariahilferstraße, all inclusive

Object number: MOYH1

[View and rent online](#)

2-room apartment, near U3 / U6 Westbahnhof / Mariahilferstraße, all inclusive

Period	18/07/ - 18/08/2025
Number of persons	2
Total incl. VAT.	€ 1.053,78
Security deposit	€ 800,00



Living space

37m²



Maximum occupancy

1 Person



Complete accommodation [?]

1 private bathroom 1 Separated bedroom 1 Living-Sleepingroom



3. floor



Check-in

07:00 - 21:00 Clock



Check-out

07:00 - 21:00 Clock

Sleeping options

Sleeping room



1x Double bed (1,60 m x 2 m)

Living and sleeping



1x Sofa bed (2 persons)

Descripton of accommodation

General: Free of commission

Stylish, fully furnished and equipped 2-room apartment (separate bedroom), 37m ² with additional 2,5m² cellar compartment

Close to Westbahnhof ,<1 km to Mariahilferstraße;

located away from the hustle and bustle in a quiet side street

Living room & separate bedroom 3rd floor, without elevator

For professional short-term rental as a temporary second home for max. half a year.

Operating costs (electricity, heating, water) are included as a flat rate.

The deposit is 2 months' rent. Just pack your bags and stay!

Location: South-west orientation (sunny side) to a quiet side street

There is not only the famous castle here but also many walking paths, parks, the famous zoo, butterfly and palm house as well as an exclusive summer pool as a place to relax.

Furnishing: Security door,
parquet floors, modern insulating glass windows with skylights
The temporary apartment is located on the 3rd floor of a Wilhelminian style house (without elevator)
and this is located in a small quiet side street to Mariahilferstraße and is fully furnished and equipped
for immediate occupancy (including bed linen and towels).

In the open carpenter's kitchen you will find a ceramic hob and fridge with freezer, all cooking utensils,
a washing machine, a Nespresso machine, a kettle and a small oven.

French designer furniture complements the Scandinavian furnishing style.

<https://youtu.be/8GgY6xinsgw>

The apartment is characterized by its particularly good location in terms of public transport:
Less than 10min walk to the Westbahnhof (U3 / U6 / S50 / 52/60/18/6/5/9 / VAL1 airport bus / 12A).
The tram line goes into the city right next to the house and reaches Mariahilferstraße or Westbahnhof
and the U3 in about 5-10 minutes. The bus stop 12A is around the corner and requires 2 stops to the
underground station U4 Längenfeldgasse.
In addition, the city center of Mariahilferstrasse with numerous shopping facilities and bars,
as well as a fitness center can be easily reached on foot as well as musicals and there
are several hotels / hostels in the immediate vicinity for visitors. It is about 2 km to Schönbrunn Palace.

TAGS:

Expat flat
All Inclusive
Kurzzeitmiete
Kurzzeitwohnung
Wohnen auf Zeit
Kurzzeitwohnen
Short-term Apartment
Short term rent
Fully furnished
Zwischen-Miete
Appartment auf Zeit
Zwischenmiete
Wohnen auf Zeit, als Übergangswohnung oder für eine Auszeit
Business Apartment – Ideal für Geschäftsreisende

Equipment & Features



Basic equipment

- Internet/Wifi
- TV
- Bedclothes
- Private toilet
- Iron & ironing board
- Hairdryer
- Music system/docking station
- Private washing machine
- Towels
- Vacuum cleaner
- Cleaning utensils



First supply

- Toilet paper
- Soap
- shampoo
- Nespresso capsules



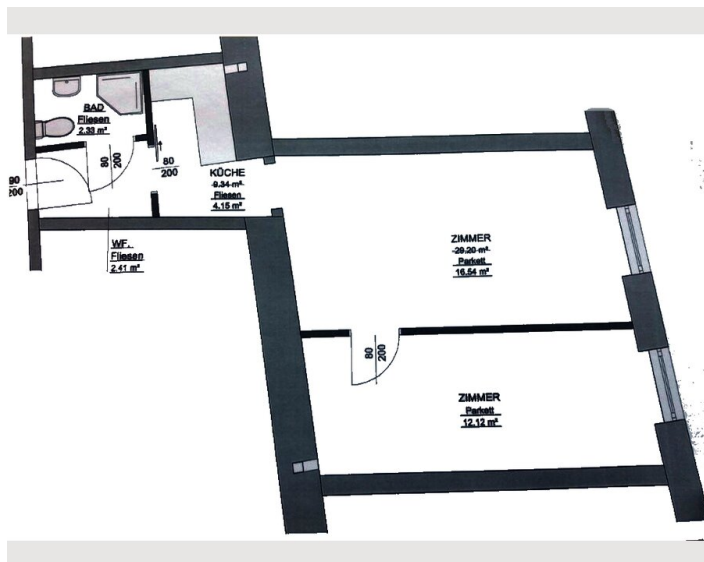
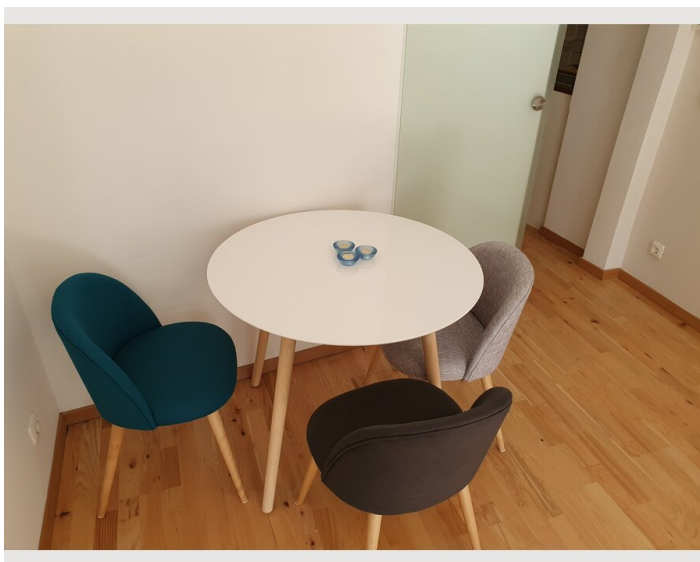
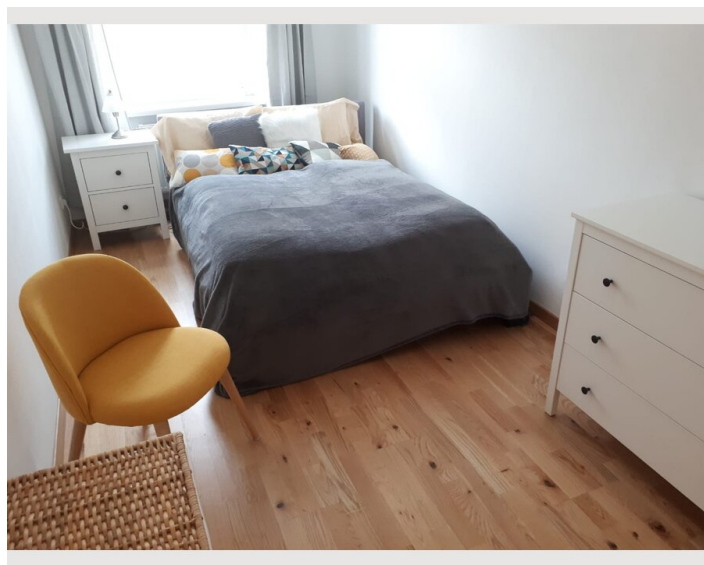
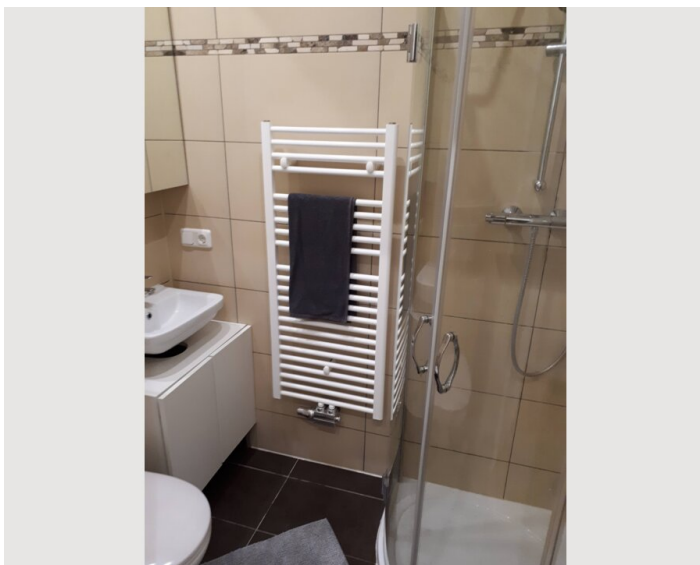
Kitchen

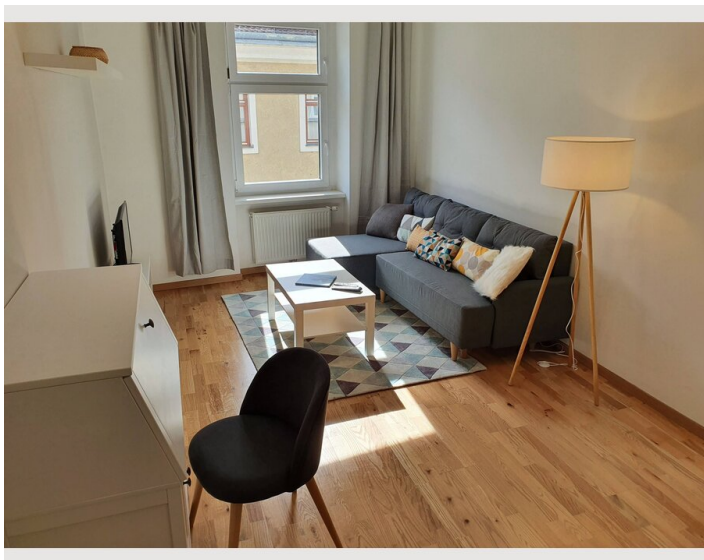
- Private kitchen
- Glasses/Tableware
- Microwave
- Cooking utensils
- Espresso machine

Informations

- Smoking not allowed
- Desk/Workplace
- Bicycle room free of charge
- Short-term parking zone subject to a charge
- Private entrance

Picture gallery





Video

[Goto Video](#)



Infrastructure



Less than 10min walk to the Westbahnhof (U3 / U6 / S50 / 52/60/18/6/5/9 / VAL1 airport bus / 12A).

The apartment is characterized by its particularly good location in terms of public transport: Less than 10min walk to the Westbahnhof (U3 / U6 / S50 / 52/60/18/6/5/9 / VAL1 airport bus / 12A). The tram line goes into the city right next to the house and reaches Mariahilferstraße or Westbahnhof and the U3 in about 5-10 minutes. The bus stop 12A is around the corner and requires 2 stops to the underground station U4 Längenfeldgasse. In addition, the city center of Mariahilferstrasse with numerous shopping facilities and bars, as well as a fitness center can be easily reached on foot as well as musicals and there are several hotels / hostels in the immediate vicinity for visitors. It is about 2 km to Schönbrunn Palace.

Location

