



STUDIO APARTMENT, 2724 MAIERSDORF

Apartments for Rent - Prime Location in the Hohe Wand Nature Park

Object number: KRAY2

[View and rent online](#)

Our apartments provide flexible rental options for up to 6 months: Select a fully furnished and equipped apartment for 600 EUR per month, or choose an unfurnished apartment for 400 EUR per month, allowing you to set it up as you wi

Period	26/05/ - 26/06/2026
Number of persons	2
Total incl. VAT.	€ 795,32
Security deposit	€ 700,00



Living space

30m²



Maximum occupancy

2 Persons



Complete accommodation [?]

1 Private bathroom 1 Living-Sleepingroom



1. floor



Check-in

15:00 - 23:00 Clock



Check-out

06:00 - 10:00 Clock

Sleeping options

Living & Sleeping



1x Double bed (1,80 m x 2 m)

Descripton of accommodation

Our cozy apartments offer the perfect retreat for those seeking flexible accommodation for up to six months. Whether you're working as a digital nomad, enjoying nature as a hiker, or looking for peace and tranquility as a long-term vacationer, our apartments provide the ideal solution for every need.

The apartments range in size from 25 to 33 m² and feature either a balcony, a view of the forest, or a view of the garden. Each apartment comes with a kitchen and its own bathroom.

Choose from two options:

A fully furnished and equipped apartment for 600 euros per month.

An unfurnished apartment for 400 euros per month, which you can decorate as you like.

If you're interested, we're happy to provide more information or assist with booking.

Equipment & Features



Basic equipment

- Balcony
- Internet/Wifi
- Towels
- Parking on the road without time limit without any cost
- Garden sharing
- Bedclothes
- Private toilet



Kitchen

- Private kitchen
- Glasses/Tableware
- Cooking utensils
- Espresso machine

Informations

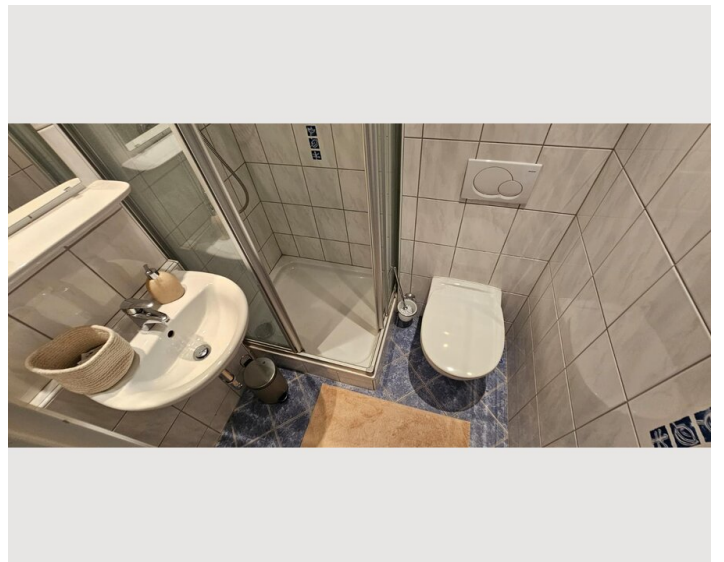
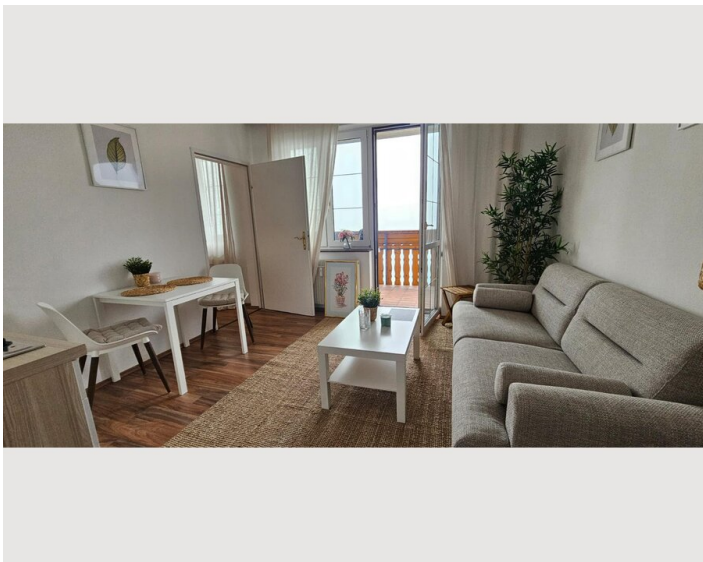
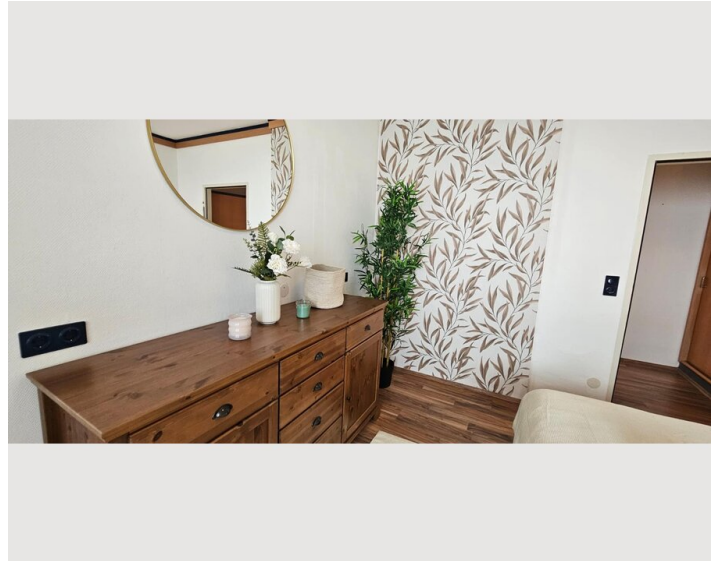
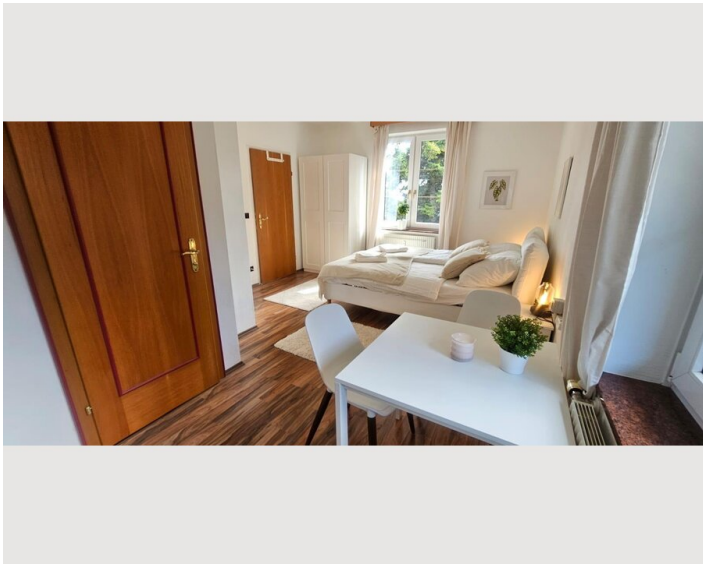
- Suitable for construction workers
- Free short-term parking zone
- Suitable for children
- Pets on request

Additional services

- Cleaning (€ 50,00)

All prices are gross per month - billing is done directly with the lessor.

Picture gallery





Infrastructure



Nah & Frisch (13 mins by car)

bus station (15 mins by car)

The infrastructure of the Hohe Wand municipality includes a variety of shopping options such as Nah und Frisch, a bakery, and farm sales. There is also a community doctor with a pharmacy, a primary school, a kindergarten, and convenient bus connections to Wiener Neustadt. Numerous inns and craft businesses enrich the local offering. For relaxation away from everyday stress, there are many beautiful hiking trails around and on the Hohe Wand.

Location

