

2 ZIMMER WOHNUNG, 1200 VIENNA








Awesome, bright two storied top floor apartment

Object number: WOHM1

[View and rent online](#)

Period	29/05/ - 29/06/2025
Number of persons	2
Total incl. VAT.	€ 1.233,44
Security deposit	€ 900,00

Awesome bright 2 storied roof top flat near Donauinsel with excellent public transport options as well as the motorway

 Living space 89m²	 5. floor Elevator available
 Maximum occupancy 1 Person	 Check-in 14:00 - 21:00 Clock
 Shared Accommodation  1 Shared bathroom 1 Separated bedroom 1 Living-Sleepingroom	 Check-out 10:00 - 21:00 Clock

Sleeping options

Sleeping room



1x Double bed (1,40 m x 2 m)

Living and sleeping



1x Sofa bed (2 persons)

Descripton of accommodation

Great rooftop apartment with two terraces/balkonys (one on the upper floor and one on the lower floor). Flat contains of two rooms (1 of which is for rent), one bathroom, one toilette which are on the lower floor of the apartment and on the upper floor there is a fully equiped kitchen, a living room and small terrace.

Public transport is great. Tram (lines 2, 31 and 33) 1 minute walk, Metro (U6) is about a 5 minute walk, bus line 37a 2 minutes walk and suburban trains about a 8 minute walk.

Also the highway is easily reachable in about 3 minutes.

Equipment features



Basic equipment

- Terrace
 - Internet/Wifi
 - TV
 - Bedclothes
 - Aircondition
 - Iron & ironing board
 - Hairdryer
 - Roof-terrace
 - Music system/docking station
 - Community washing machine
 - Private toilet
 - Vacuum cleaner
 - Cleaning utensils
-



Fireplace

- Grill
-



First supply

- Toilet paper
 - Nespresso capsules
 - Soap
-



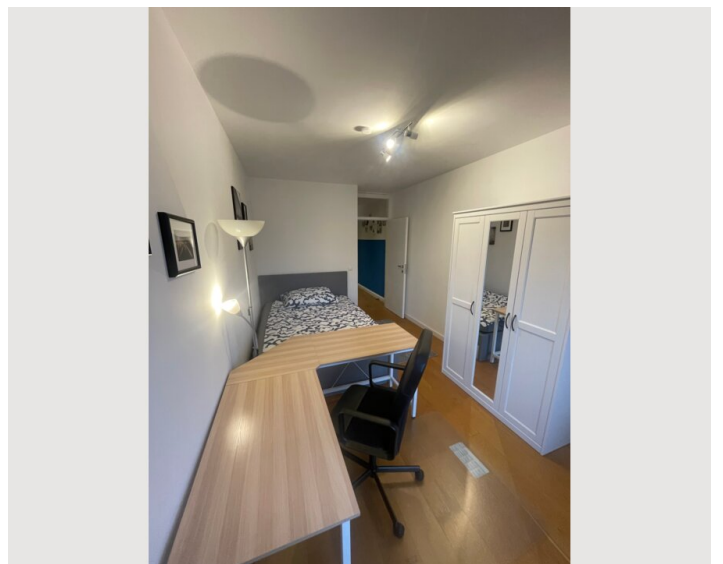
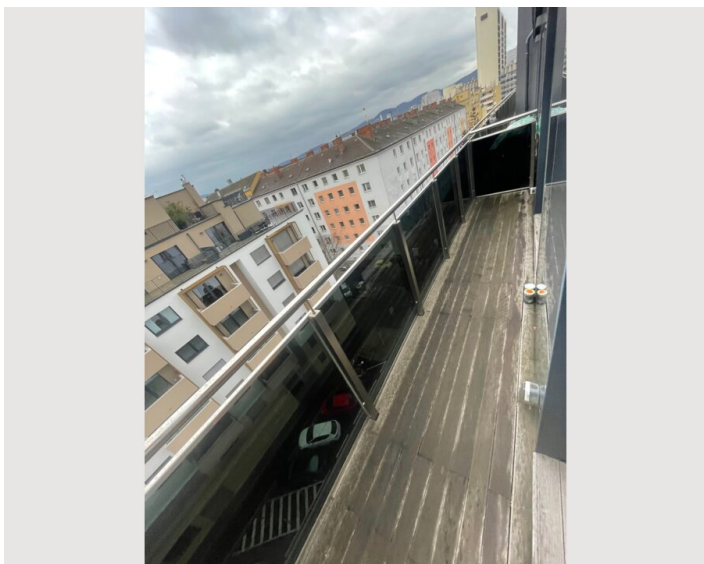
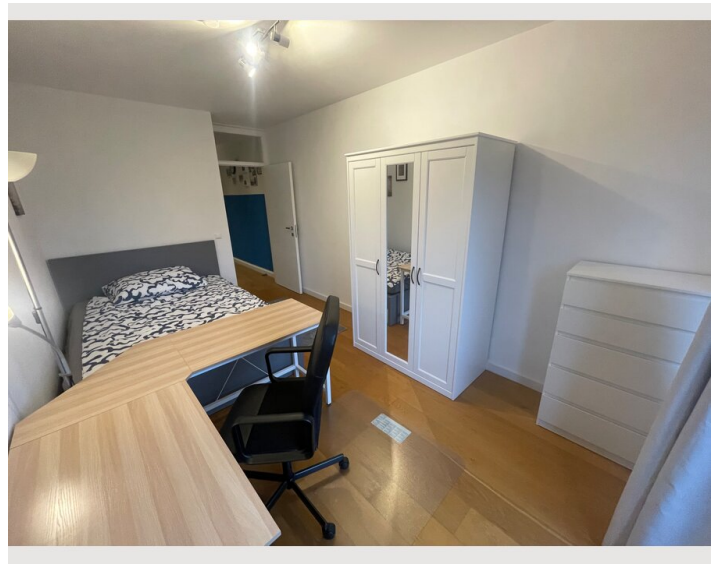
Kitchen

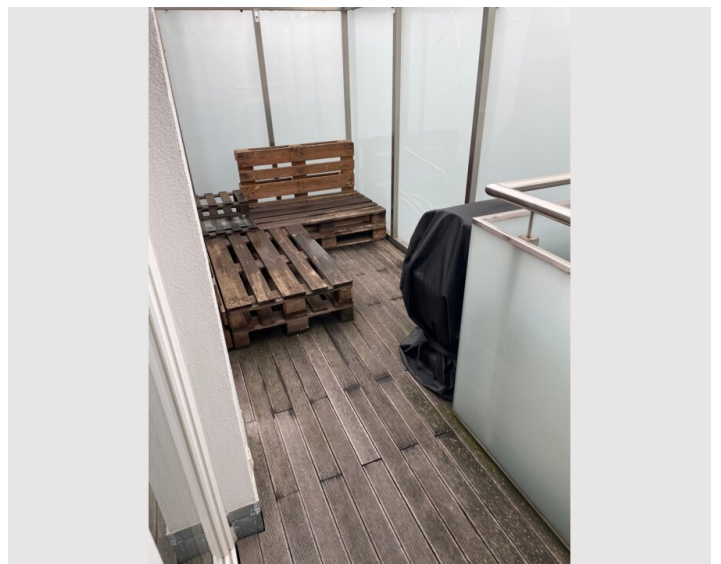
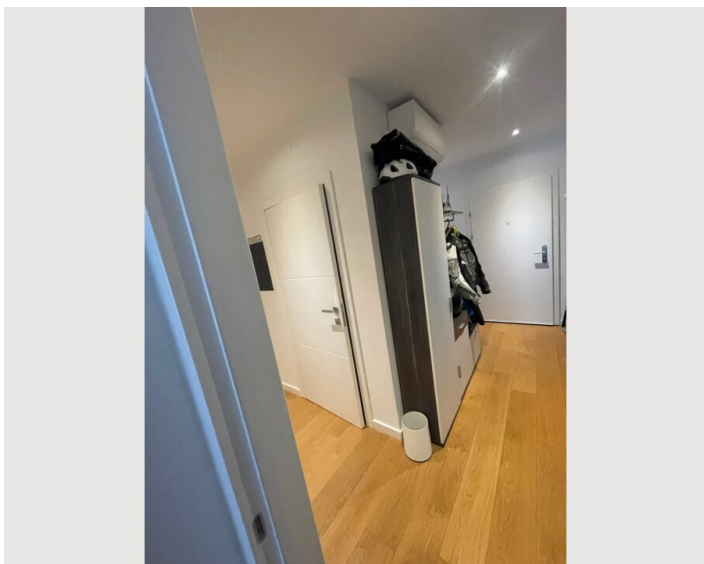
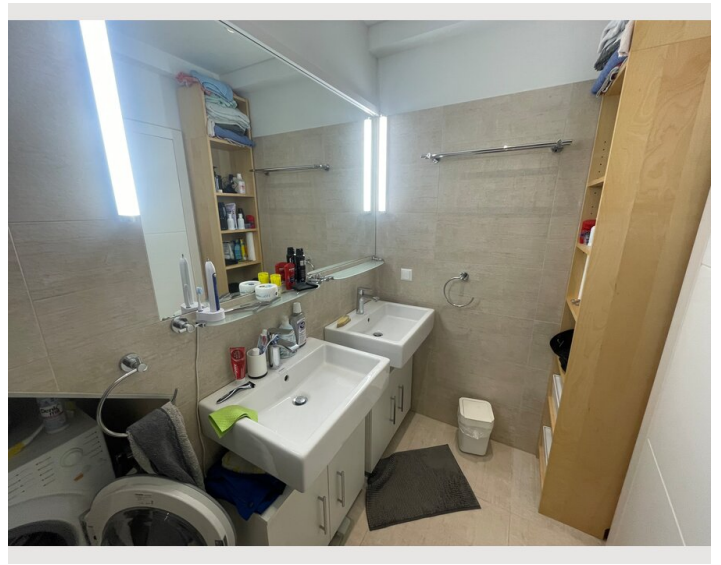
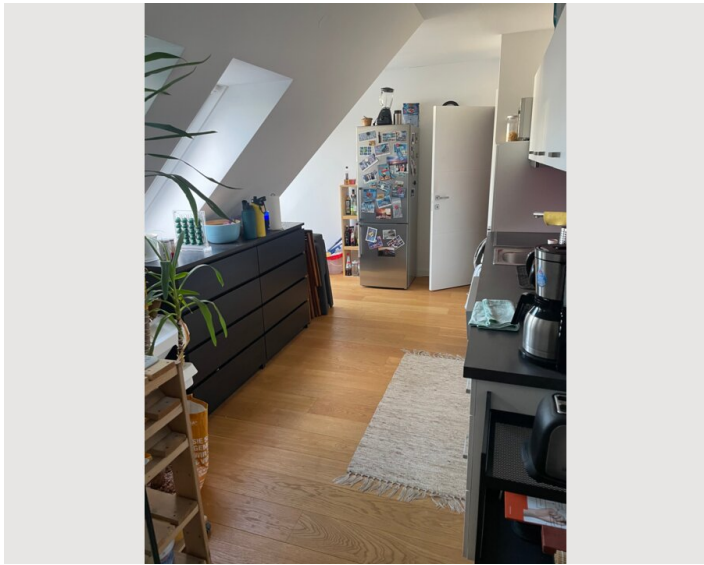
- Shared kitchen
- Glasses/Tableware
- Filter coffee
- Microwave
- Cooking utensils
- Espresso machine
- Dishwasher

Informations

- Smoking not allowed
- Desk/Workplace
- Regular cleaning at extra cost
- Short-term parking zone subject to a charge
- Pets forbidden

Picture gallery





Infrastructure



Grocery stores as well as DM in the vicinity



Tram lines 2, 31, 33 two minutes away



Bus 37a two minutes away



Airport can be reached via the local train in approx. 40 minutes

Three tramlines (2, 31, 33) run 2 minutes away, bus 37a is also 2 minutes away, Metro U6 is approximately a 5 minute walk away, local train station is approximately a 10 minute walk away.

Good selection of shops in the vicinity

Location

