



3 ROOM APARTMENT, 6858 BILDSTEIN

Unrivalled view over the Rhine Valley and Lake Constance

Object number: NGPP1

[View and rent online](#)

As-new 3-room flat with a uniquely beautiful, exposed view over the Rhine Valley and Lake Constance. It can be reached in just 5 minutes by car from the 'Lower Rhine Valley' economic area, but is already in the centre of the recreational area.

Period	17/06/ - 17/07/2025
Number of persons	2
Total incl. VAT.	€ 4.265,38
Security deposit	€ 2.600,00



Living space

102m²



Maximum occupancy

2 Persons



Complete accommodation ?

1 private bathroom 1 Separated bedroom



Ground floor



Check-in

07:00 - 22:00 Clock



Check-out

07:00 - 22:00 Clock

Sleeping options

Sleeping room



1x Double bed (1,60 m x 2 m)

Descripton of accommodation

An unrestricted view to the west, into the sunset (on clear days up to 100 km away), is offered by the highlight of the flat, the very spacious 33 m² terrace with continuous glass balustrade.

The bright living room with dining area and large, functional and modern fitted kitchen faces south-west and promises relaxing and restful hours.

A panoramic window gives the approx. 15 m² bathroom, with free-standing bathtub, shower, extra WC and two washbasins, an incomparable flair.

The bedroom and the office face north, towards the edge of the forest, and guarantee undisturbed, restful sleep and relaxed working - here too, as in all rooms, with a view of the lake.

Equipment features



Basic equipment

- Terrace
- Bedclothes
- Private toilet
- Vacuum cleaner
- Cleaning utensils
- Internet/Wifi
- Towels
- Private parking space
- Iron & ironing board



First supply

- Toilet paper
- Nespresso capsules
- Soap



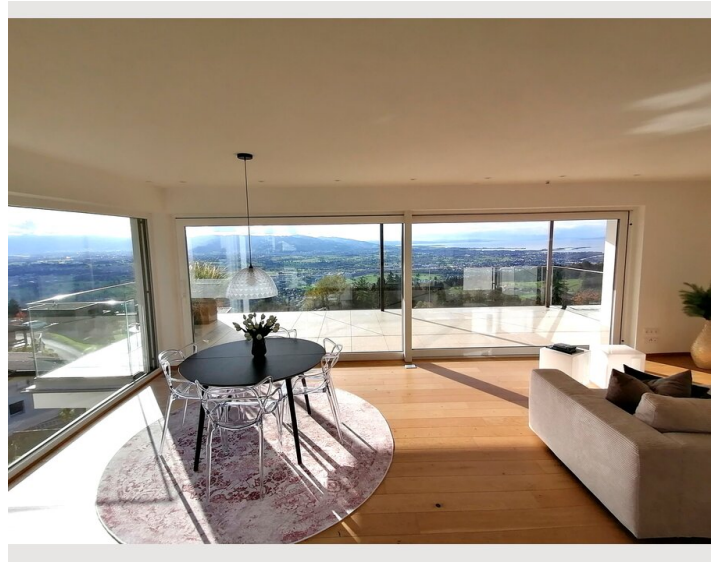
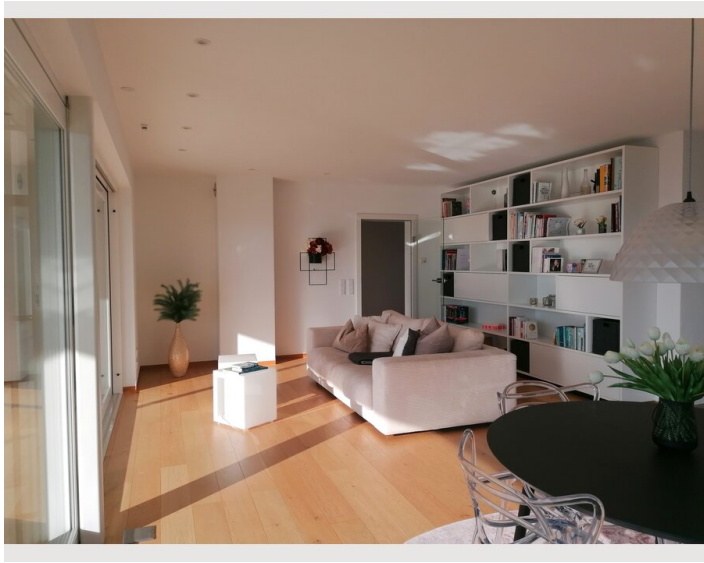
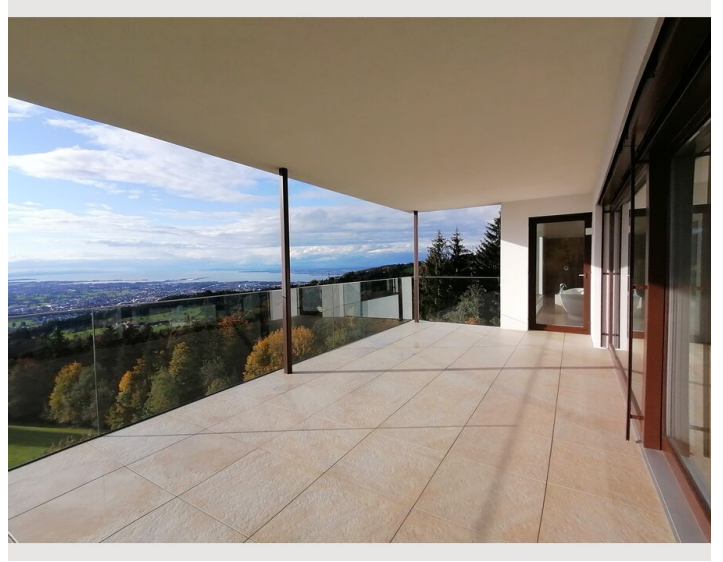
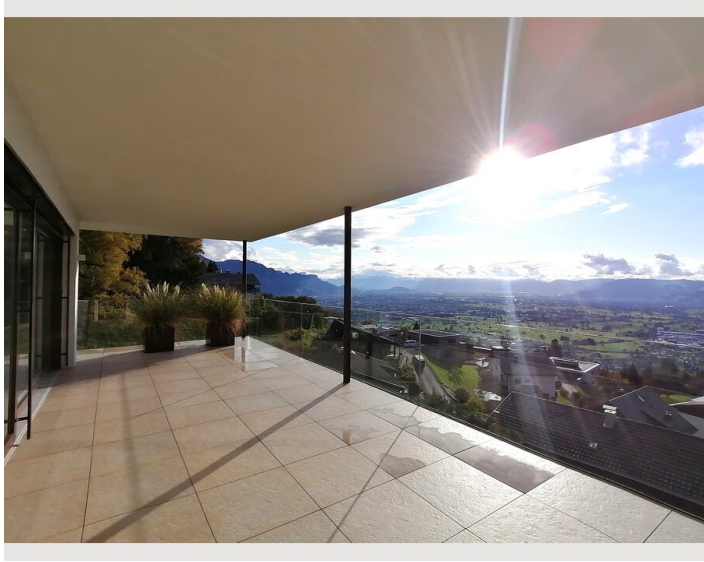
Kitchen

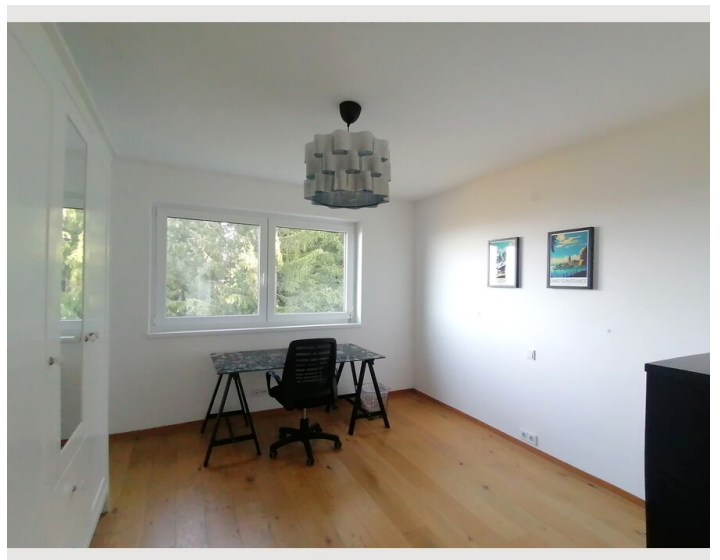
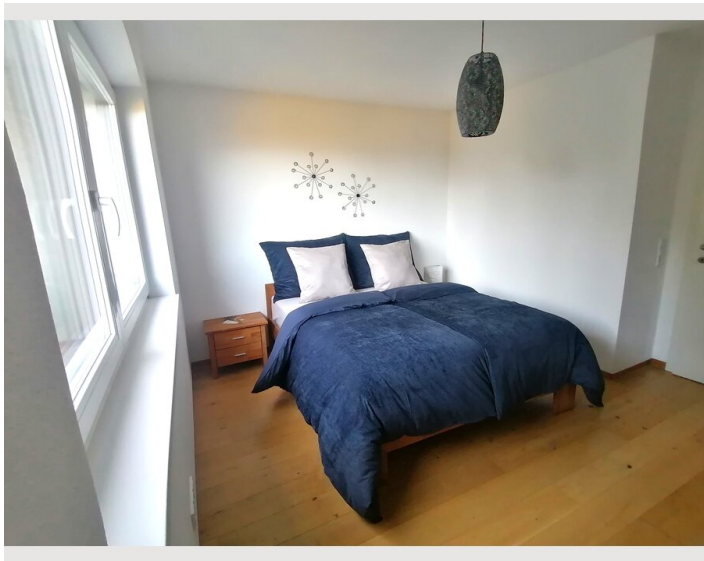
- Private kitchen
- Glasses/Tableware
- Dishwasher
- Cooking utensils
- Coffee machine

Informations

- Not suitable for children
- Desk/Workplace
- Pets forbidden
- Bicycle room free of charge
- Smoking not allowed
- Private entrance
- Regular cleaning at extra cost

Picture gallery







Infrastructure



120 m (2 min); runs approx. every 2 hours



1 km away in the village centre

This apartment is part of a building comprising two residential units and is situated in an attractive location at an altitude of 800 meters on Bildsteiner Berg.

Public transportation is easily accessible, with a bus stop just two minutes away. Daily shopping needs can be met within a 12-minute walk.

By car, you can reach the valley within five minutes, where all essential infrastructure, such as bus and train connections, pharmacies, and various grocery stores, are also easily accessible.

Additionally, the location boasts excellent access to all key regions of the economic area "Lower Rhine Valley," which can be reached by car in approximately 30 minutes.

Location

