



2 ZIMMER WOHNUNG, 1120 VIENNA

The NoNa Apartment

Object number: The NoNa Apartment

[View and rent online](#)

Period	03/06/ - 03/07/2025
Number of persons	2
Total incl. VAT.	€ 1.693,24
Security deposit	€ 1.400,00

Our "The NoNa Apartment" is in a very good central location and is also easily accessible by public transport.



Living space

40m²



Maximum occupancy

4 Persons



Complete accommodation [?]

1 private bathroom 1 Separated bedroom 1 Living-Sleepingroom



3. floor

Elevator available



Check-in

14:00 - 00:00 Clock



Check-out

00:00 - 10:00 Clock

Sleeping options

Sleeping room



1x Double bed (1,40 m x 2 m)

Living and sleeping



1x Sofa bed (2 persons)

Descripton of accommodation

Modern, fully furnished 2-room apartment (40 m²)

This cozy 40 m² apartment offers everything you need for a pleasant stay. It includes a bedroom, a fully equipped kitchen-living room, a home office workspace and an anteroom. The bathroom is equipped with a shower and a toilet.

Thanks to the windows on the sunny side, the apartment is flooded with plenty of natural light, creating a pleasant atmosphere. A smart TV that is equipped with all common apps such as YouTube, Netflix, Disney+, Amazon Prime and many others provides your entertainment.

Ideal for singles or couples looking for a modern, well thought-out and functional living solution.

Equipment features



Basic equipment

- Internet/Wifi
- Bedclothes
- Private toilet
- Cleaning utensils
- TV
- Towels
- Vacuum cleaner



First supply

- Toilet paper
- Nespresso capsules
- Soap
- Fridge filling on request



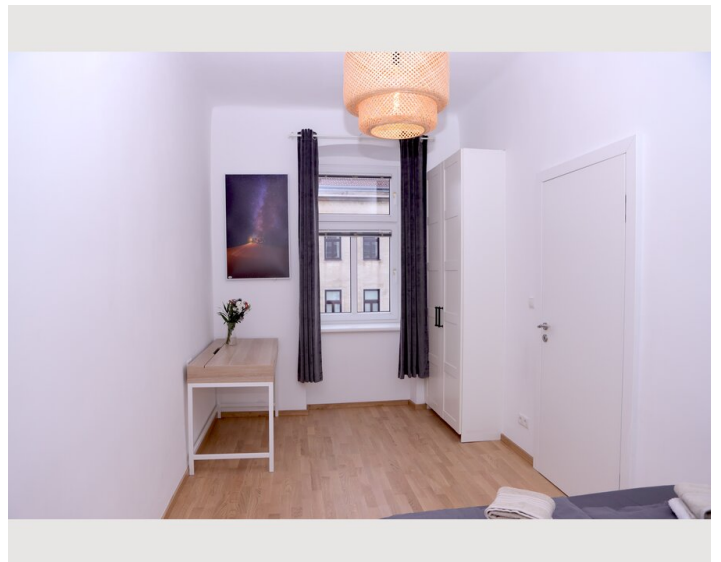
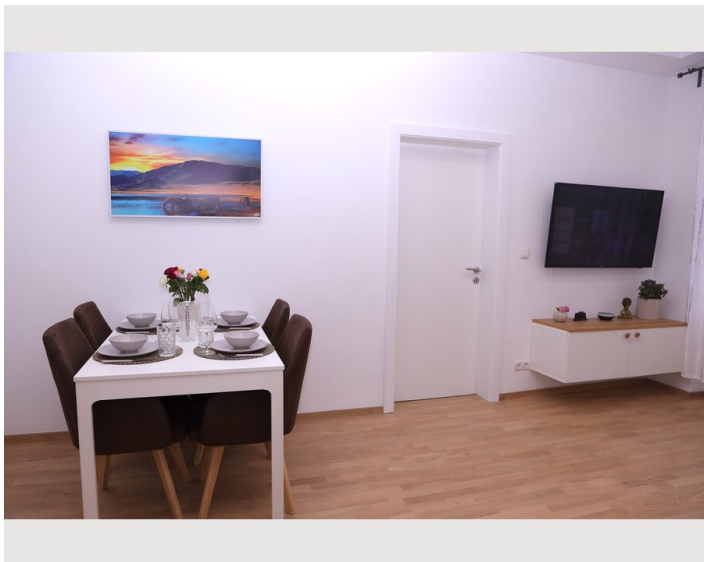
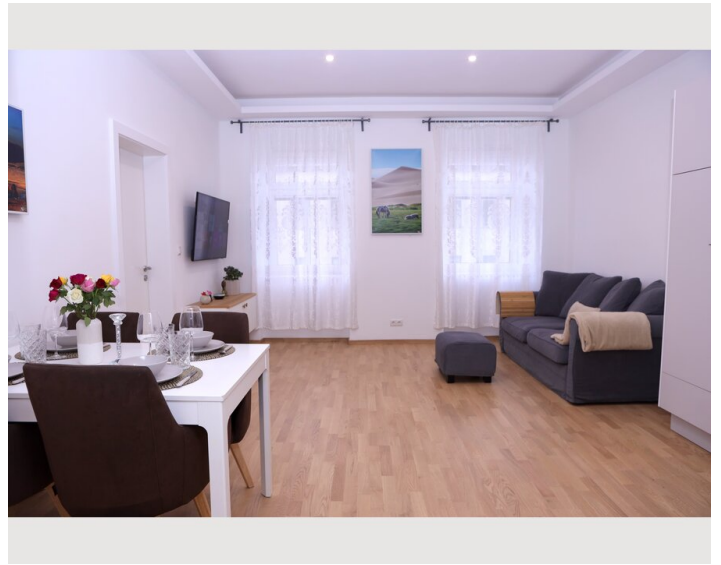
Kitchen

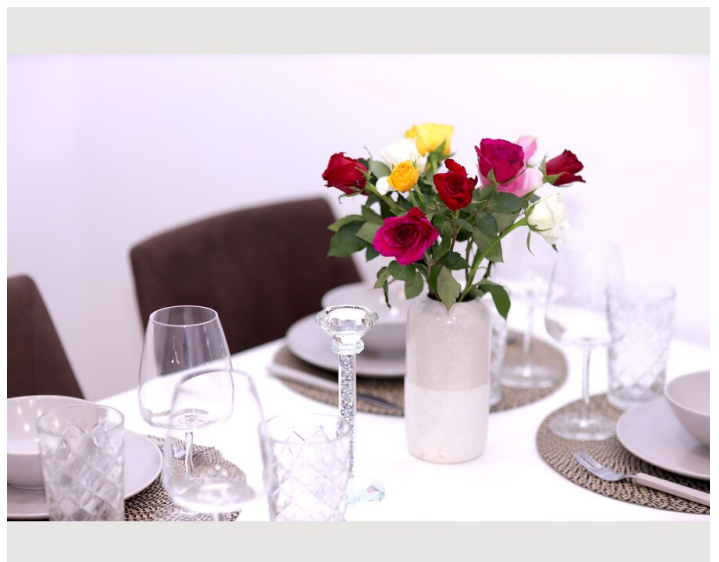
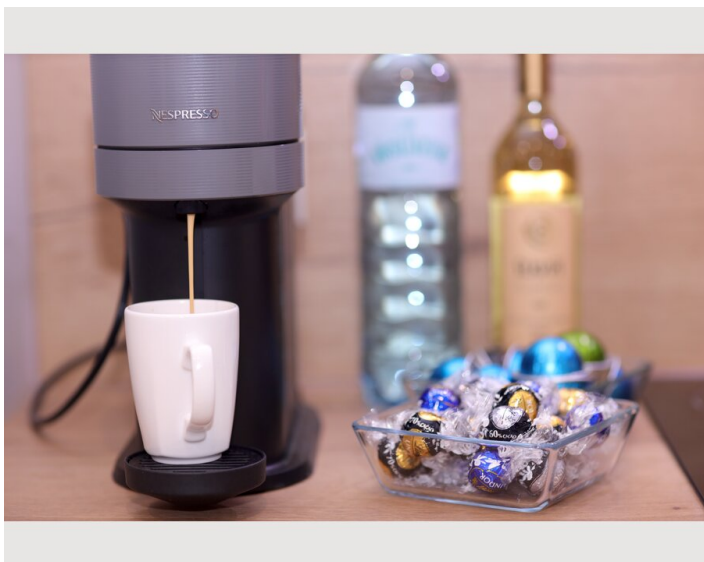
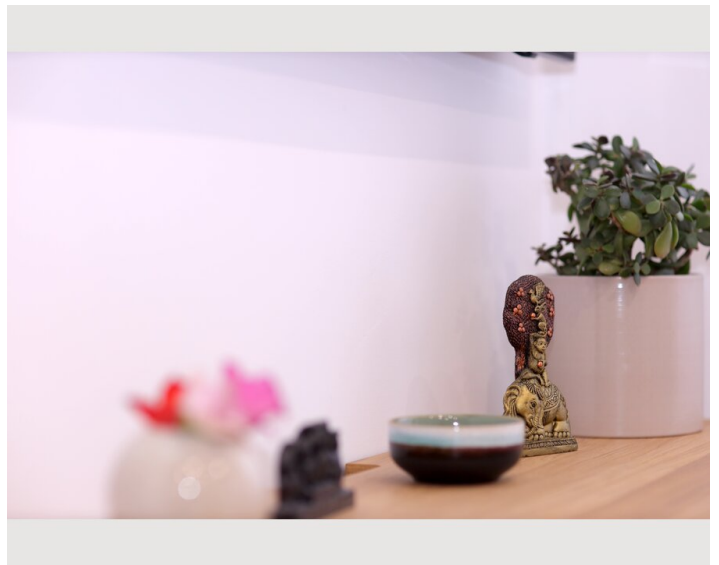
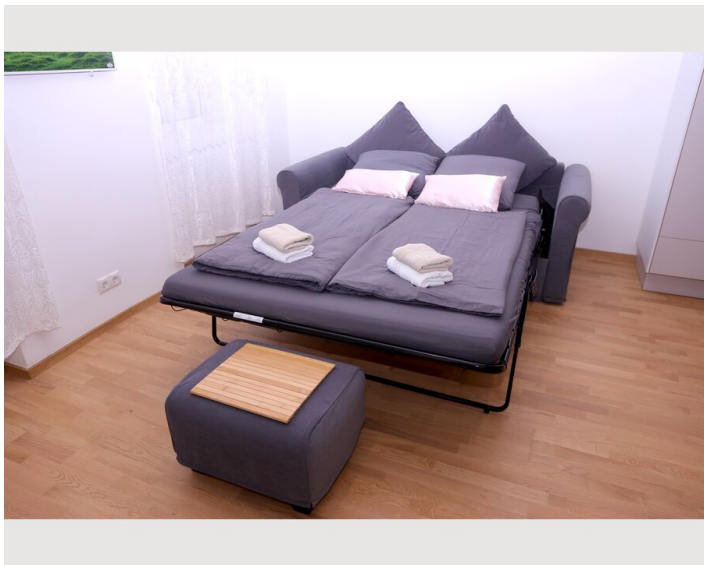
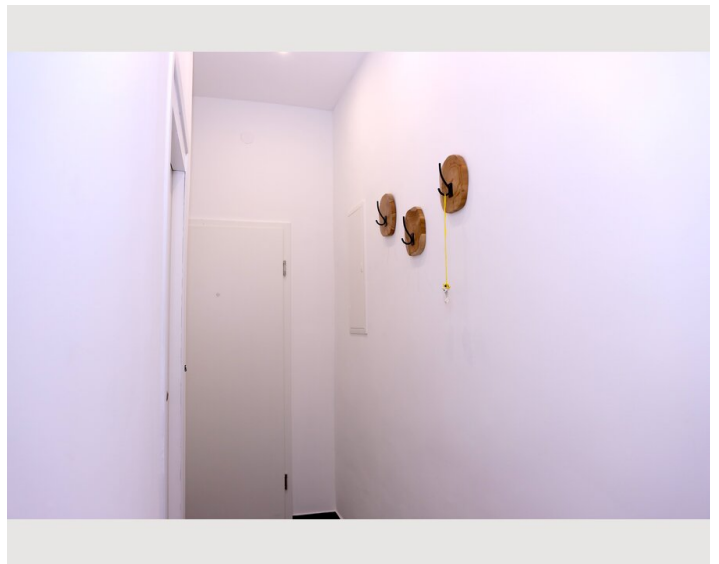
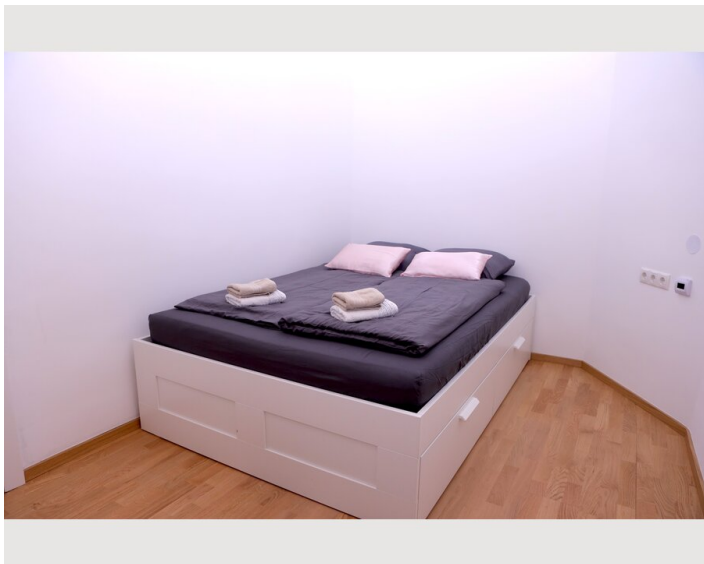
- Private kitchen
- Glasses/Tableware
- Dishwasher
- Cooking utensils
- Espresso machine

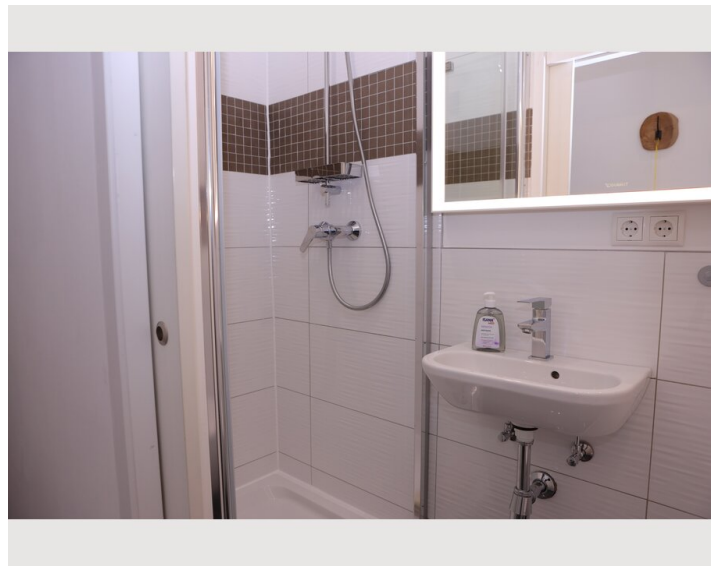
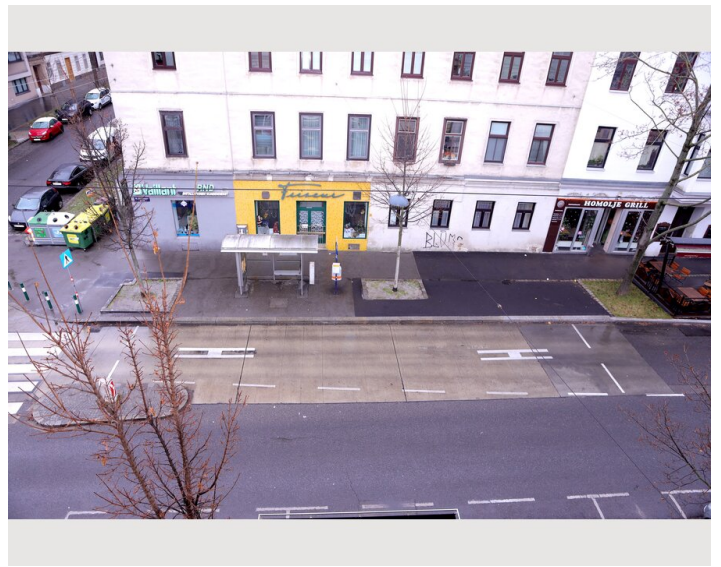
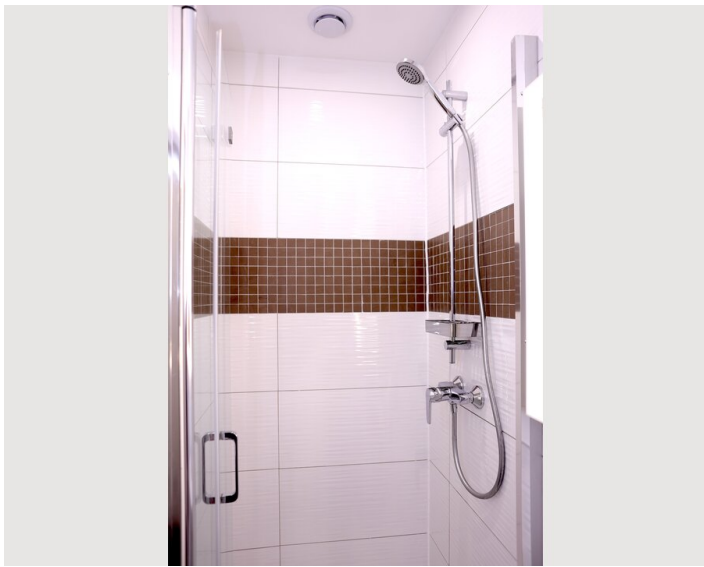
Informations

- Suitable for construction workers
- Smoking not allowed
- Pets on request
- Suitable for children
- Desk/Workplace







Picture gallery







Infrastructure

	right in front of the front door		15 min
	Vienna Westbahnhof - 13 min		40 min
	Vienna Central Station - 13 min		3 min

- Right in front of the front door you have the bus stop to the nearest subway, tram or directly to the city center (opera, Karlsplatz).
- In less than 10 minutes you can reach the following subways (line U4 & line U6).
- In the same building (ground floor) you have a snack bar (schnitzel), cafe/bar & an Italian pizzeria.
- There are several restaurants, coffee houses, pharmacies and food markets within a 100 meter radius.

Location

