



STUDIO APARTMENT, 1200 VIENNA

## Cozy Studio - Mortarapark

Object number: VES01

[View and rent online](#)

<b>Period</b>	17/06/ - 17/07/2025
<b>Number of persons</b>	2
<b>Total incl. VAT.</b>	€ 1.282,76
<b>Security deposit</b>	€ 1.000,00

The flat is located in a quiet neighborhood of Brigittenau, right next to Mortarapark. It is close to a supermarket, a tram stop, a train station, a shopping centre and a metro stop. Ground floor, it has all what you need for your medium-term stay.



### Living space

30m<sup>2</sup>



### Maximum occupancy

1 Person



### Complete accommodation <sup>?</sup>

1 private bathroom 1 Living-Sleepingroom



### Ground floor

Elevator available



### Check-in

14:00 - 20:00 Clock



### Check-out

07:00 - 11:00 Clock

## Sleeping options

### Living and sleeping



1x Double bed (1,40 m x 2 m)

## Descripton of accommodation

This comfortable studio consists of a bigger room for sleeping, dining, working from home and a smaller entrance room with a well-equipped kitchen.

There are also a bathroom with a shower and a toilet.

The flat was recently refurnished.

It has a working desk and a WiFi connection. It offers ideal conditions for home officing or studying and relaxing.

The neighborhood is very quiet, neighbors are very cordial people.

## Equipment features



### Basic equipment

- Internet/Wifi
- Bedclothes
- Private toilet
- Cleaning utensils
- Private washing machine
- Towels
- Iron & ironing board
- Hairdryer



### First supply

- Toilet paper
- Soap
- shampoo
- Fridge filling on request



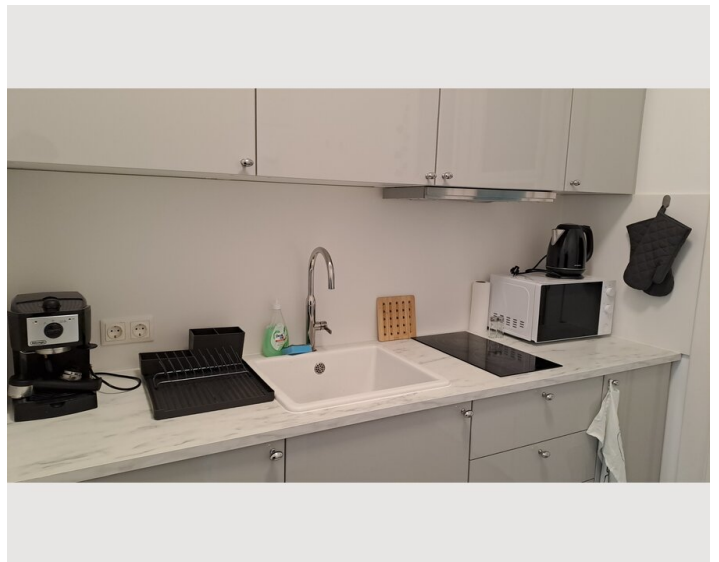
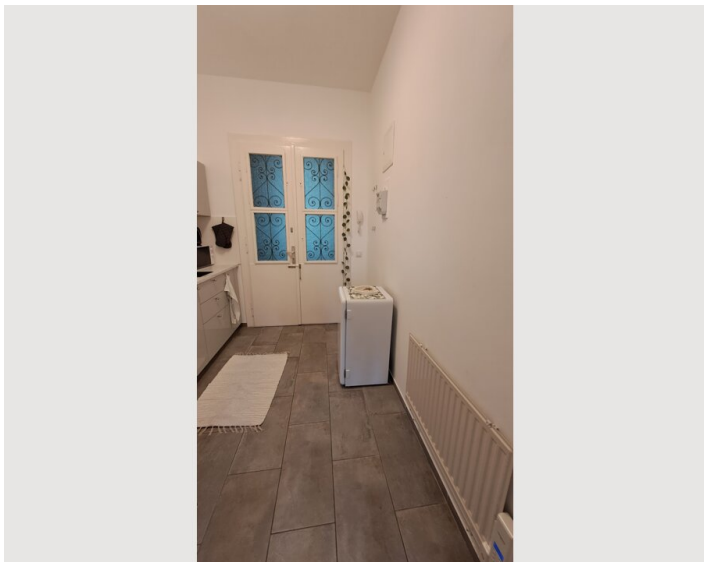
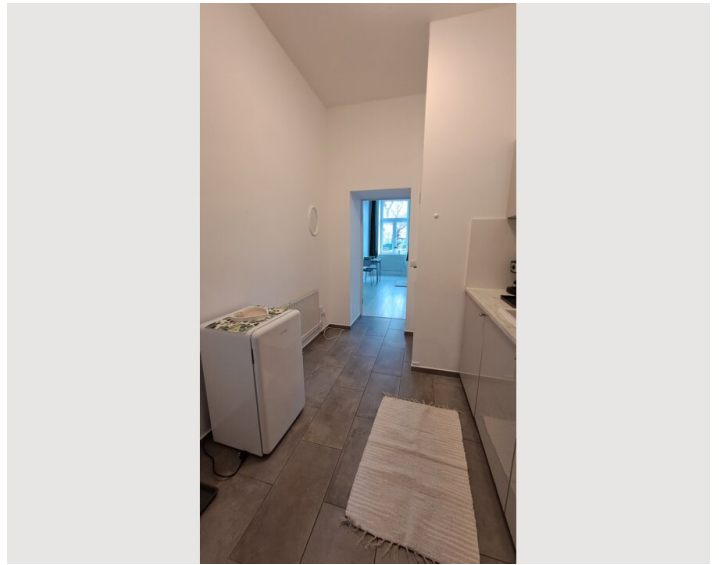
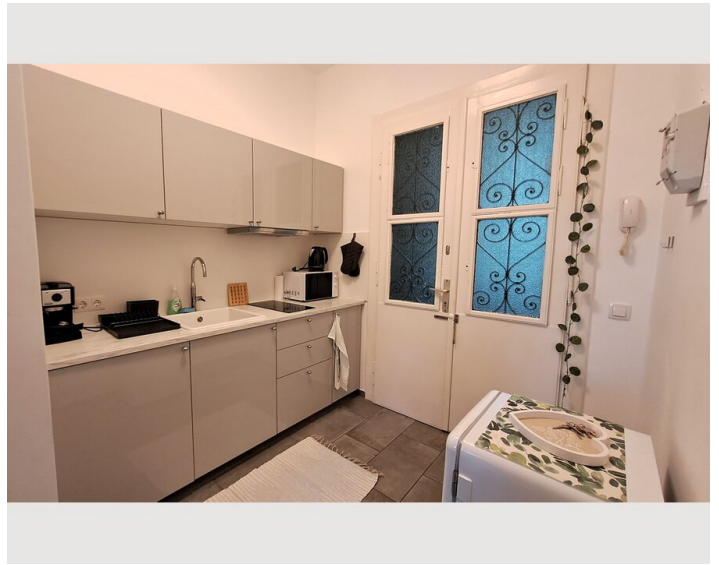
### Kitchen

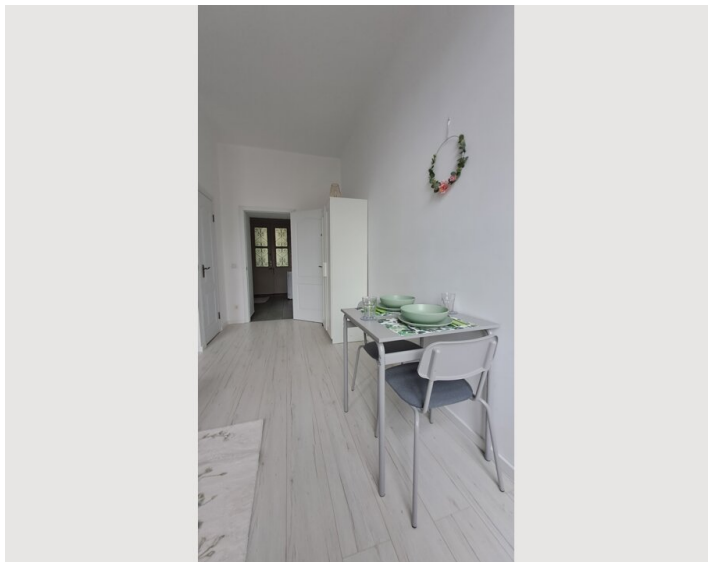
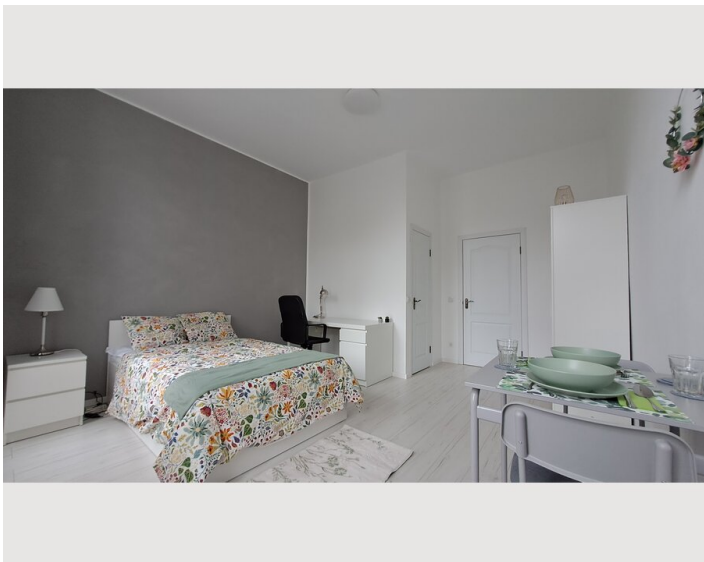
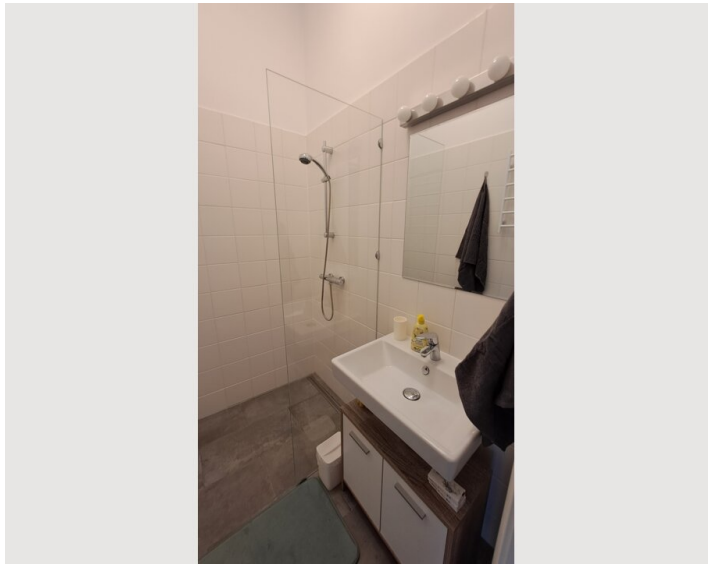
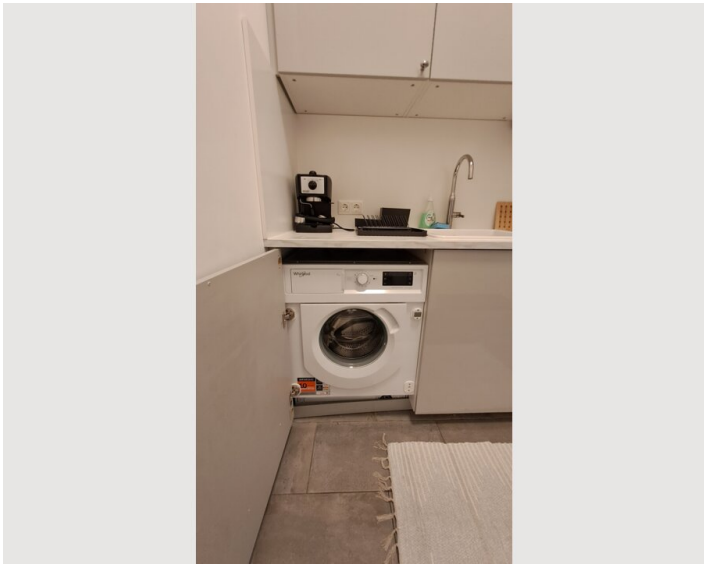
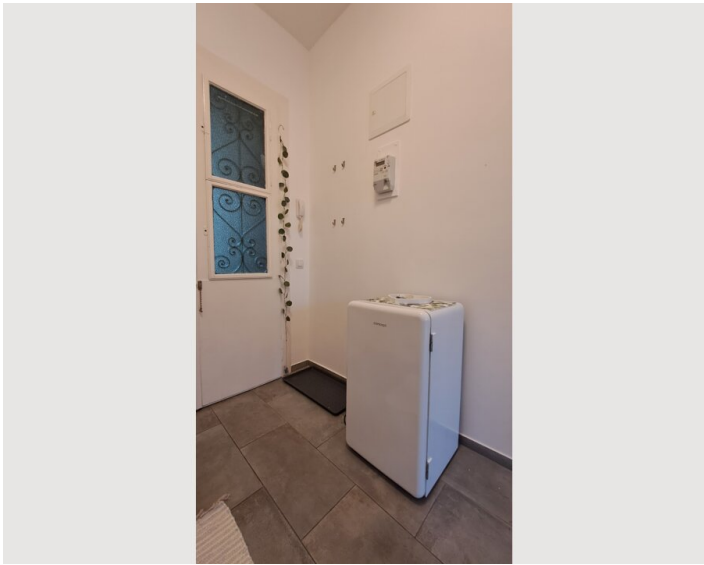
- Private kitchen
- Glasses/Tableware
- Microwave
- Cooking utensils
- Espresso machine

## Informations

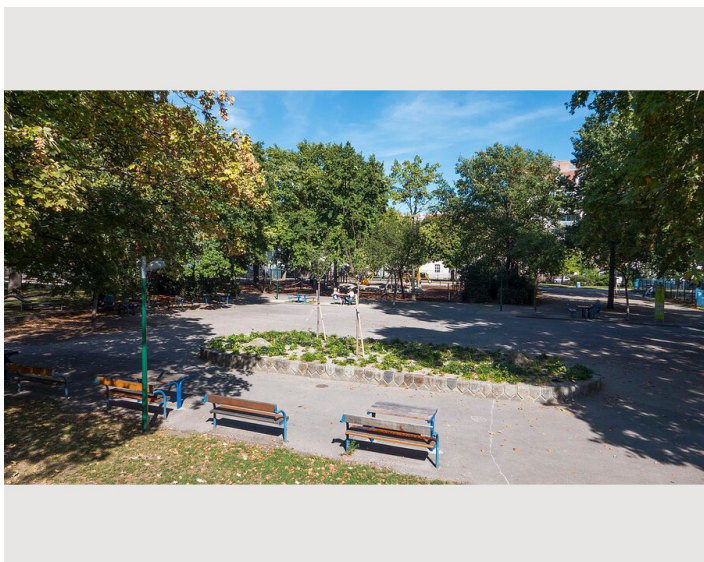
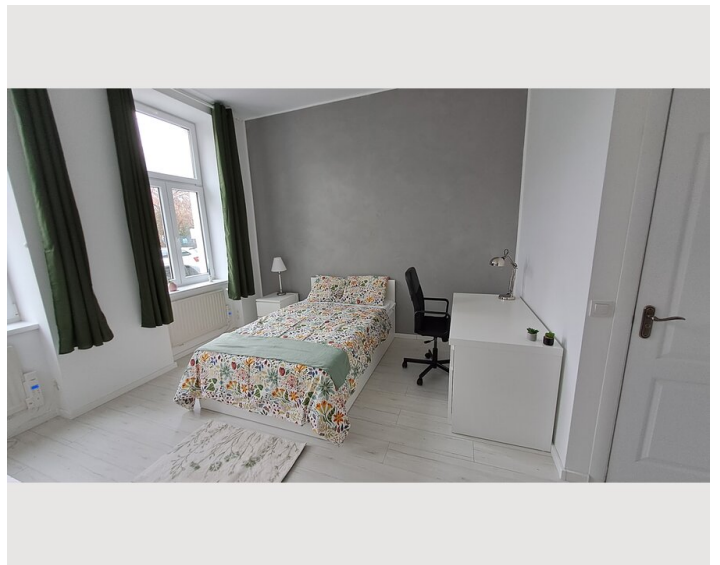
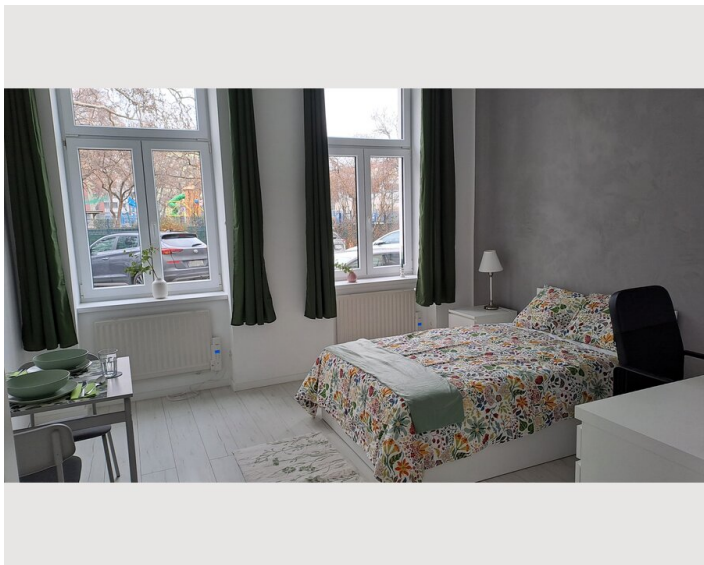
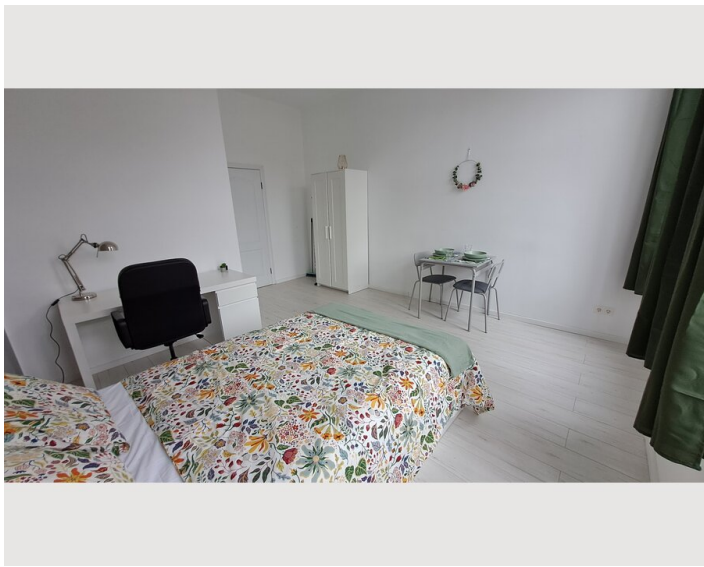
- Suitable for construction workers
- Desk/Workplace
- Pets forbidden
- Smoking not allowed
- Private entrance
- Bicycle room free of charge

## Picture gallery









## Infrastructure

 Traisengasse S

 SPAR

 Traisengasse Bahnhof

All main amenities are within a short walk: in literally a 5-minutes walking distance there are connections that will carry you throughout the whole city, namely tram stops for tram lines 1 and 2, and a train station connected to S1.

There's a supermarket in 400m and a pharmacy in 500m.

## Location

