



4 ROOM APARTMENT AND MORE, 8402 WERNDORF

## Sorinas Home

Object number: WD 6

[View and rent online](#)

<b>Period</b>	31/01/ - 03/03/2026
<b>Number of persons</b>	2
<b>Total</b> incl. VAT.	€ 4.871,63
Security deposit	€ 3.700,00

Quiet location, but close to the motorway and supermarkets. The accommodation leaves nothing to be desired. I'm always available if you have any questions.



### Living space

75m<sup>2</sup>



### Maximum occupancy

7 Persons



### Complete accommodation <sup>?</sup>

1 Private bathroom 3 Separated bedrooms 1 Living-Sleepingroom



### 1. floor



### Check-in

11:00 - 22:00 Clock



### Check-out

07:00 - 11:00 Clock

## Sleeping options

### **Bedroom 1**



3x Single bed

### **Bedroom 2**



2x Single bed

### **Bedroom 3**



2x Single bed

## Living & Sleeping



1x Sofa bed (1 person)

## Descripton of accommodation

The apartment has 3 separate bedrooms, equipped with single or double beds as desired.

Bathroom is very spacious, equipped with a large rain shower, double sink and a washing machine.

The kitchen-dining rooms are fully equipped. On the balcony you can enjoy the garden view in a very quiet location.

Internet, parking, garden and barbecue area are also available.

## Equipment & Features



### Basic equipment

- Balcony
- TV
- Bedclothes
- Private toilet
- Parking on the road without time limit without any cost
- Iron & ironing board
- Hairdryer
- Internet/Wifi
- Private washing machine
- Towels
- Private parking space
- Vacuum cleaner
- Cleaning utensils



### First supply

- Toilet paper
- Nespresso capsules
- Soap



### Kitchen

- Private kitchen
- Glasses/Tableware
- Filter coffee
- Microwave
- Cooking utensils
- Espresso machine
- Dishwasher

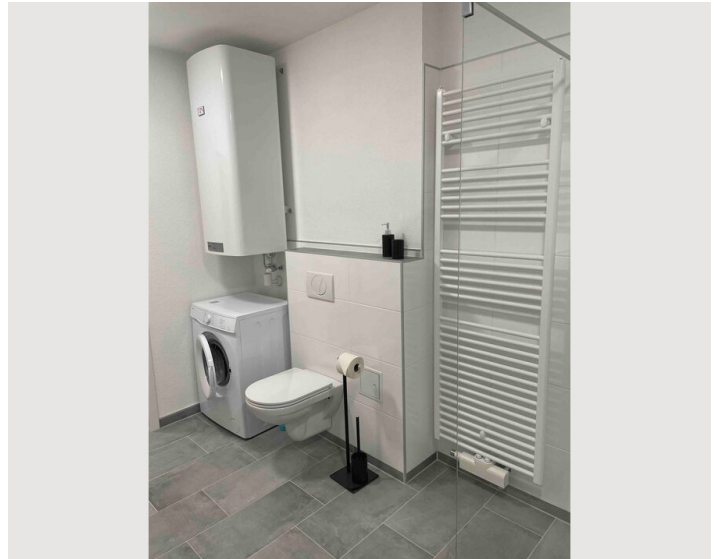
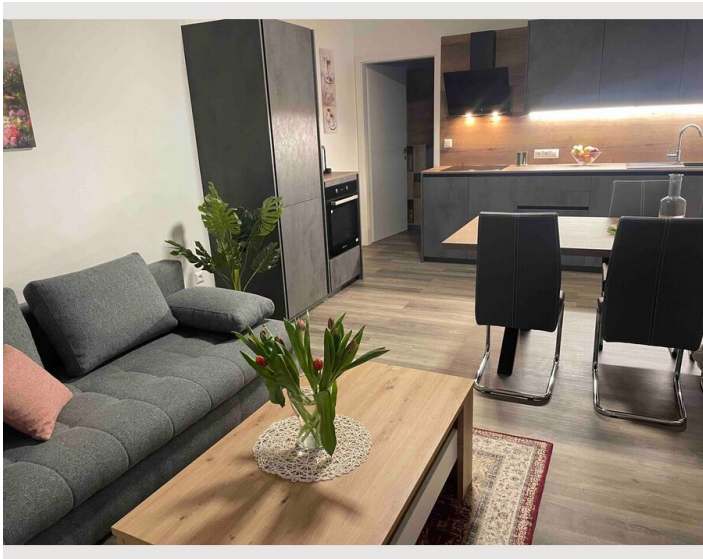
### Informations

- Suitable for construction workers
- Free short-term parking zone
- Private entrance
- Pets forbidden
- Smoking not allowed
- Desk/Workplace
- Pets on request
- Regular cleaning at extra cost

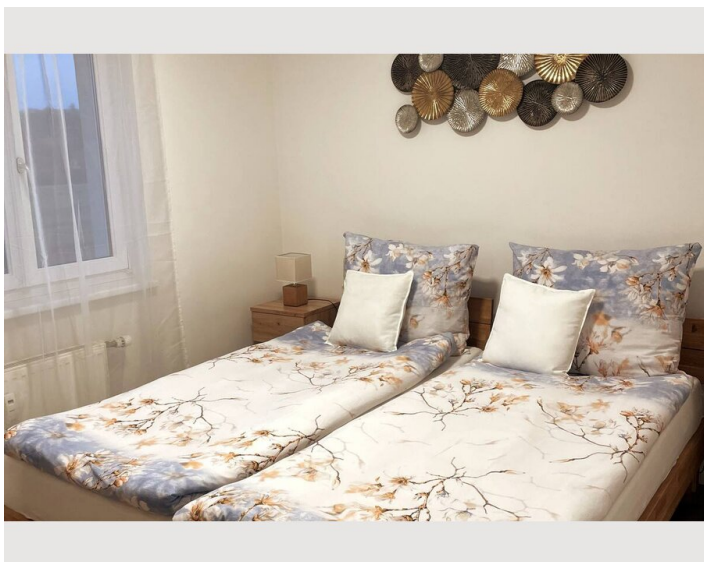
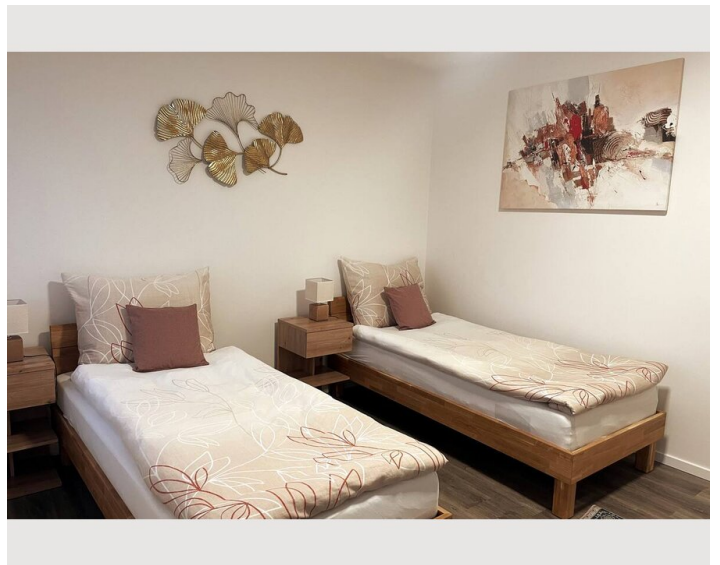
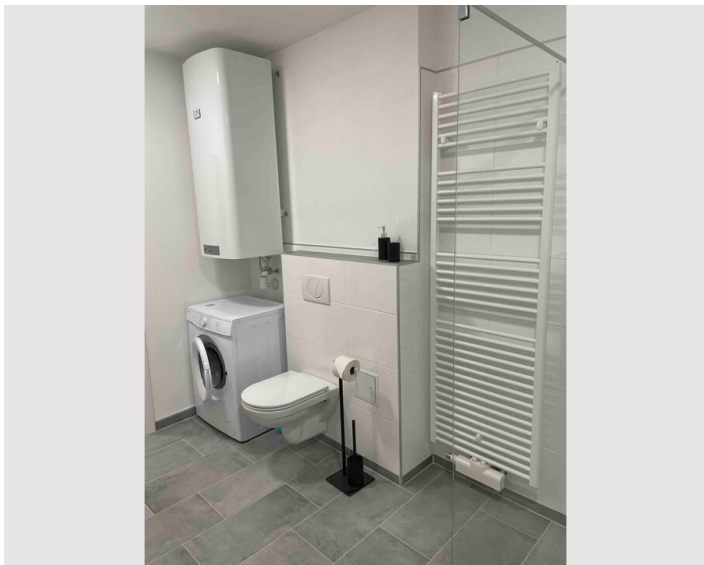
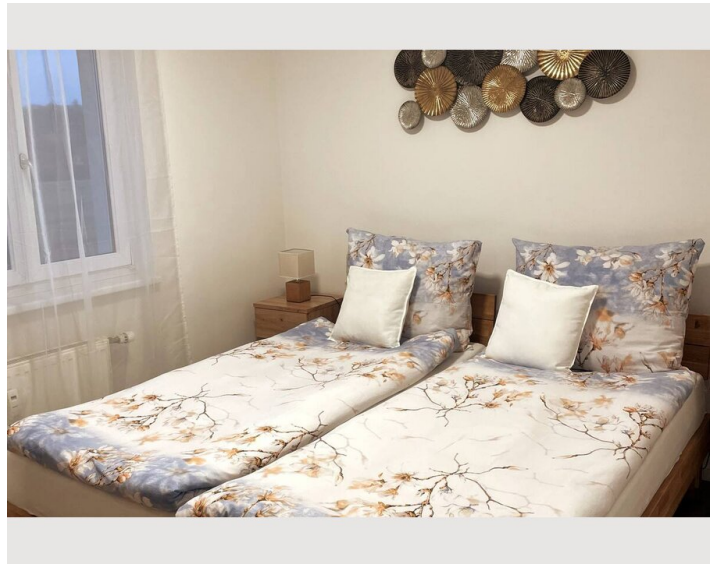
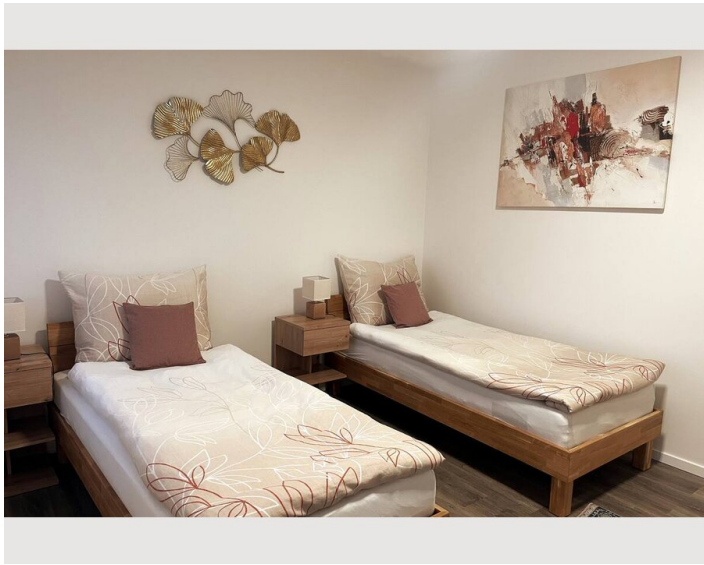
### Additional services

All prices are gross per month - billing is done directly with the lessor.

### Picture gallery







## Infrastructure



Shops, hiking trails and sports fields are in the immediate vicinity.

## Location

