



3 ROOM APARTMENT, 1170 VIENNA

Green Serenity & City Vibes – The Best of Both Worlds in Vienna Neuwaldegg

Object number: LDRF1

[View and rent online](#)

A small apartment is for rent in Neuwaldegg, one of Vienna's most popular neighbourhoods. Nature is right on the doorstep.

Period	10/02/ - 10/03/2026
Number of persons	2
Total incl. VAT.	€ 1.930,23
Security deposit	€ 1.600,00



Living space

67m²



Maximum occupancy

2 Persons



Complete accommodation [?]

1 Private bathroom 1 Separated bedroom



Ground floor



Check-in

11:00 - 15:00 Clock



Check-out

07:00 - 10:00 Clock

Sleeping options

Sleeping room



1x Double bed (1,80 m x 2 m)

Descripton of accommodation

This beautiful 3-room flat combines modern living with charming flair. It has a cosy bedroom, a spacious living room and an inviting eat-in kitchen - ideal for sociable evenings or relaxing hours at home.

The spacious kitchen and a private bathroom with elegant shower and toilet ensure maximum comfort. There is also a separate guest toilet.

An absolute highlight is the view of the neighbour's idyllic garden - a true green oasis. Thanks to the exclusive location in a residential neighbourhood, you can enjoy an exceptional quality of living in a pleasantly quiet and harmonious environment, yet you can quickly reach the inner districts of Vienna with their variety of restaurants, bars, museums and sights.

Welcome to your new home - a perfect symbiosis of style, comfort and nature! 🌿

Equipment & Features



Basic equipment

- Internet/Wifi
 - TV
 - Bedclothes
 - Private toilet
 - Iron & ironing board
 - Hairdryer
 - Music system/docking station
 - Private washing machine
 - Towels
 - Vacuum cleaner
 - Cleaning utensils
-



First supply

- Toilet paper
 - Soap
 - shampoo
-



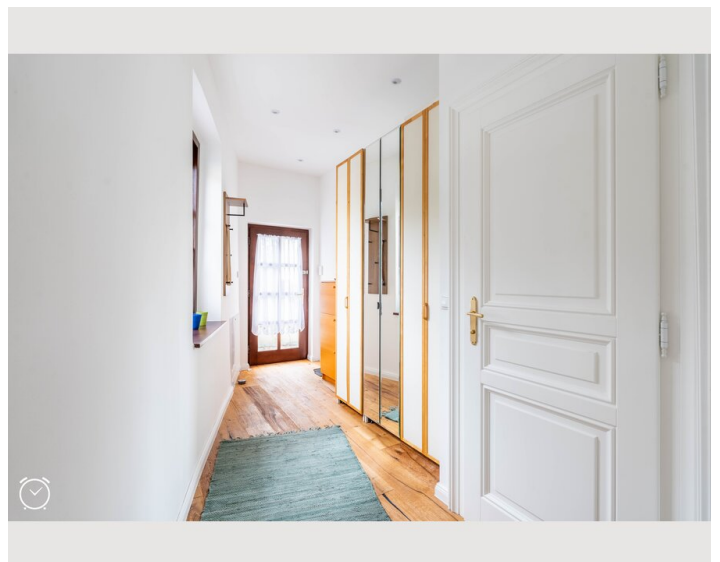
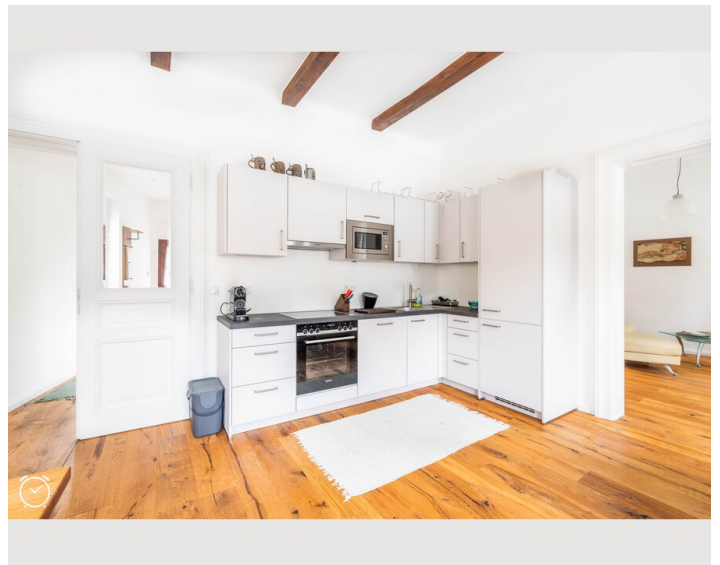
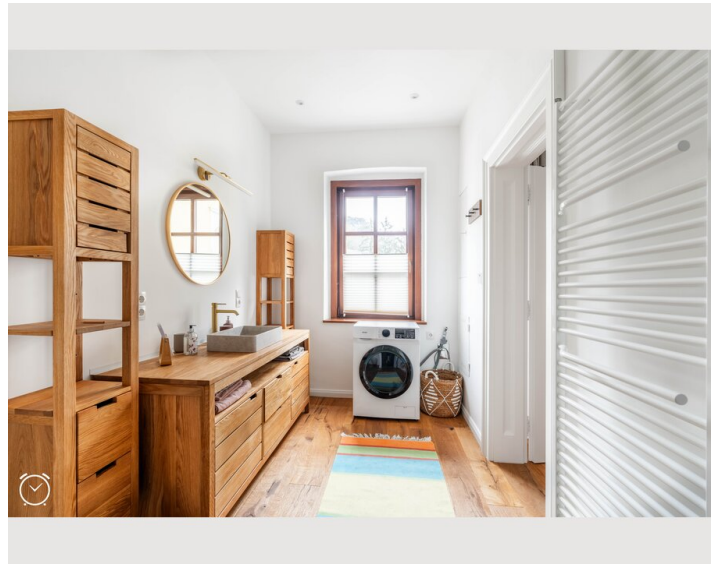
Kitchen

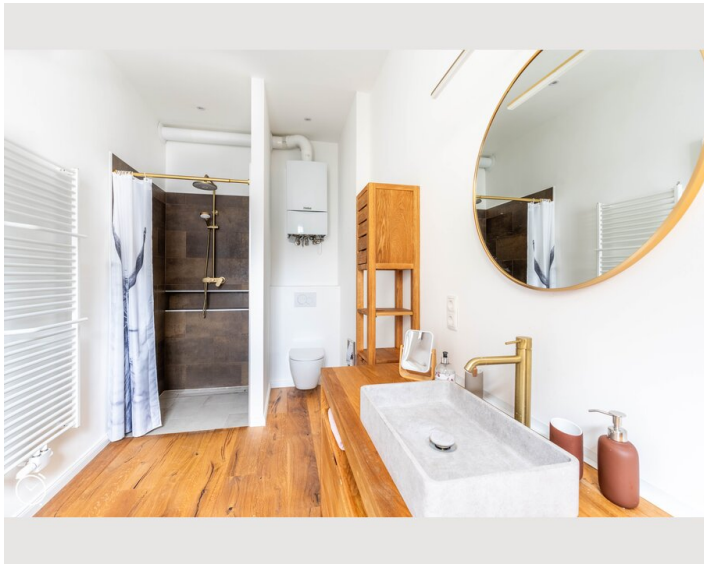
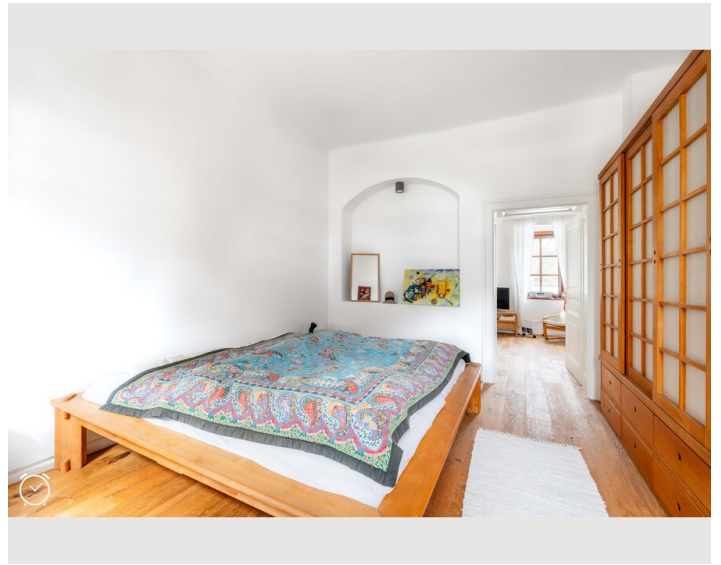
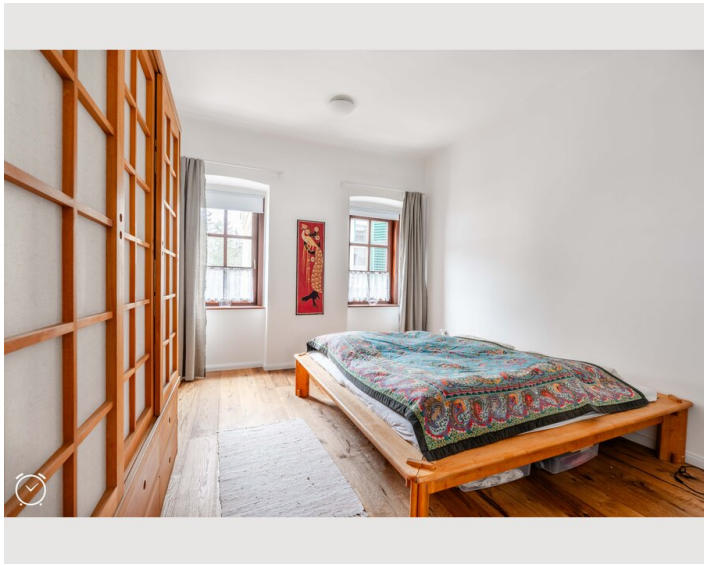
- Private kitchen
- Glasses/Tableware
- Dishwasher
- Cooking utensils
- Espresso machine
- Microwave

Informations

- Suitable for construction workers
- Short-term parking zone subject to a charge
- Private entrance
- Smoking not allowed
- Desk/Workplace
- Pets on request

Picture gallery





Video

[Goto Video](#)



Infrastructure



The nearest supermarket is a 10-minute walk away, but there is also a bus which is 1 minute away. The tram, which takes you to the centre, can be reached by bus in 5 minutes.

Location

