



STUDIO APARTMENT, 4060 LEONDING

Furnished Apartment with Loggia in Leonding – Includes Parking & Bus Stop in Front of the Building

Object number: RFSV1

[View and rent online](#)

Cozy furnished studio apartment with loggia in Leonding. Ideal for temporary stays with quick access to Linz, the main train station (10 min by car, 15-20 min by public transport), and the airport (15 min by car). Includes district heating, a separat

Period	24/07/ - 24/08/2025
Number of persons	2
Total incl. VAT.	€ 1.194,14
Security deposit	€ 800,00



Living space

43m²



Maximum occupancy

2 Persons



Complete accommodation [?]

1 private bathroom 1 Living-Sleepingroom



3. floor



Check-in

07:00 - 22:00 Clock



Check-out

07:00 - 22:00 Clock

Sleeping options

Living and sleeping



1x Single bed



1x Sofa bed (1 person)

Descripton of accommodation

This approx. 43 m² apartment is located on the 3rd floor of a well-maintained residential building and comes fully furnished. The living/sleeping area is functionally equipped and has access to a 6 m² loggia, perfect for relaxation.

The separate kitchen includes essential appliances. The bathroom has a bath tube and a separate toilet. Additionally, the apartment offers a hallway, a storage room, and a basement unit for extra space.

The heating is provided via district heating, ensuring comfortable temperatures. A parking space is available.

This apartment is ideal for business travelers, commuters, or individuals needing a temporary residence, particularly due to the quick access to Linz Central Station and Linz-Hörsching Airport.

Equipment & Features



Basic equipment

- Loggia
- Private washing machine
- Private parking space
- Garden sharing
- Private toilet
- Vacuum cleaner



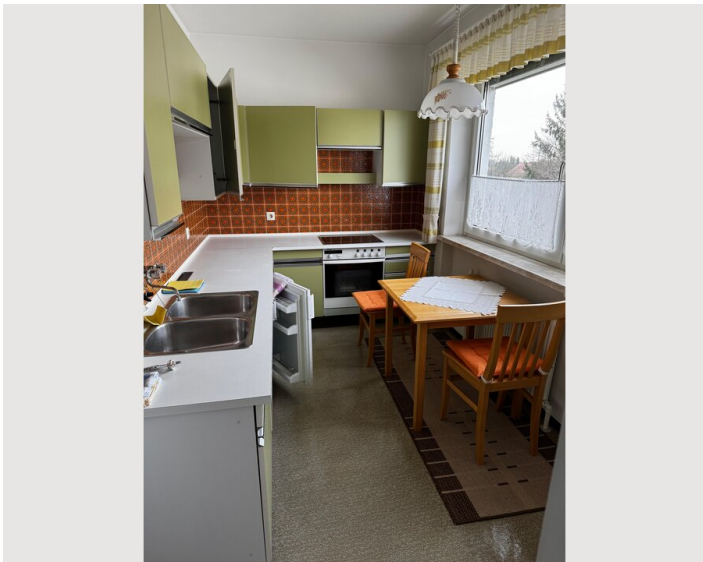
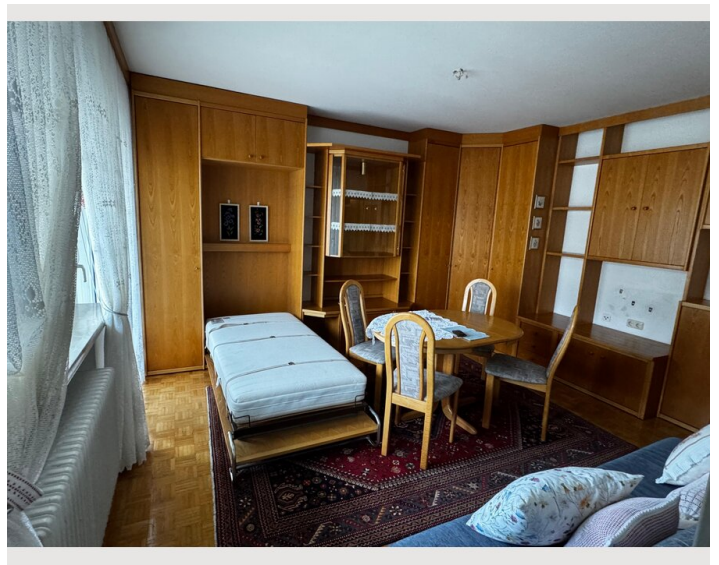
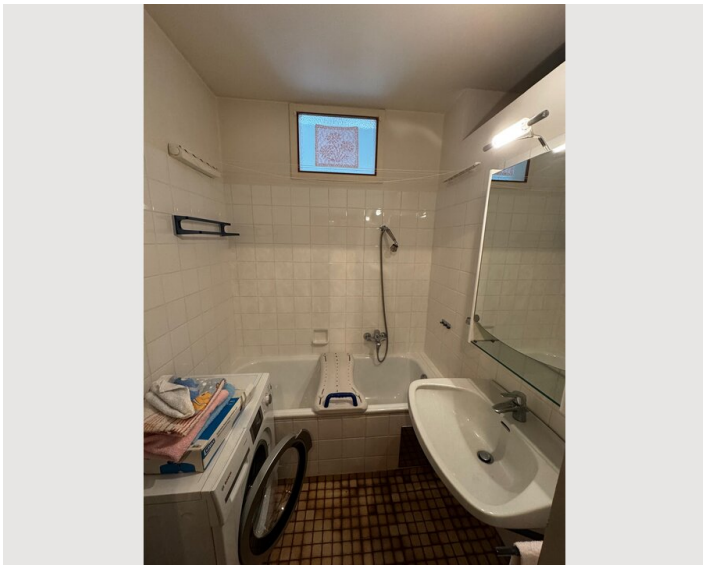
Kitchen

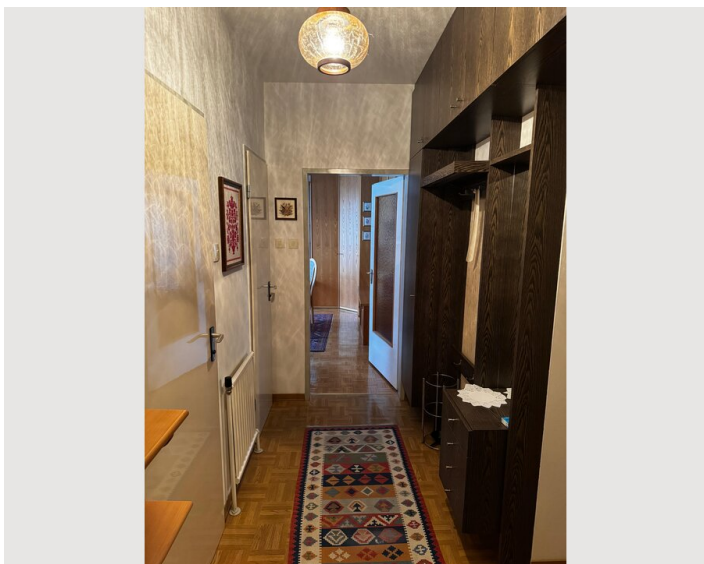
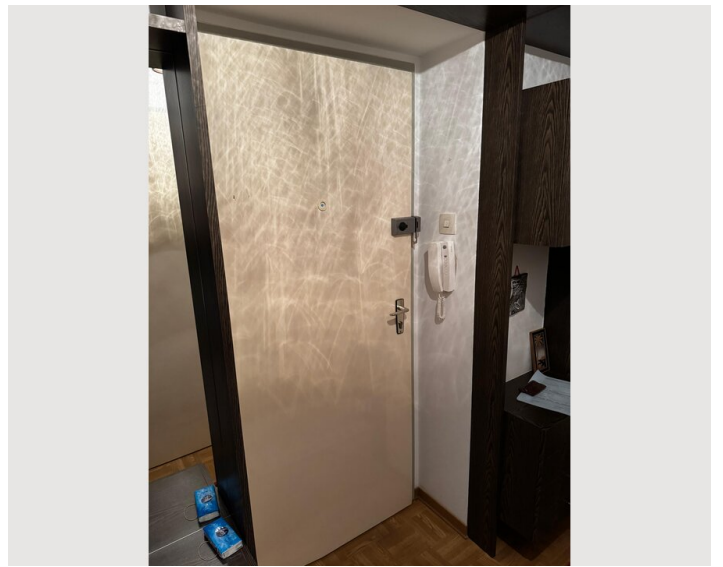
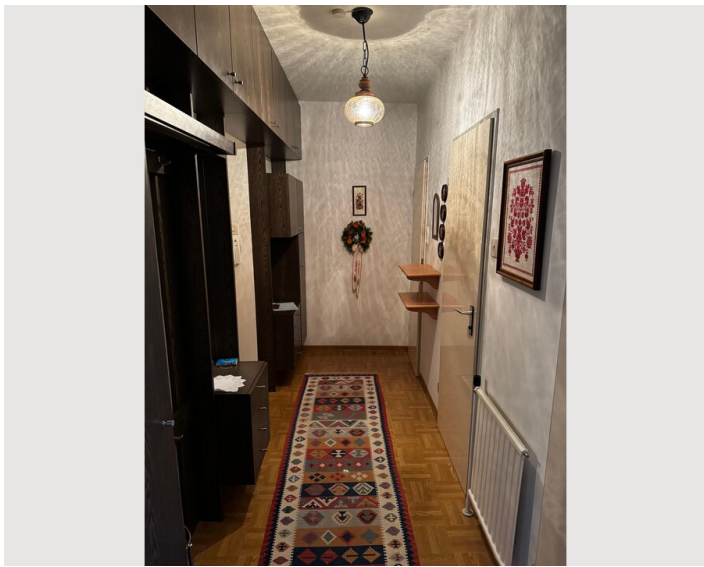
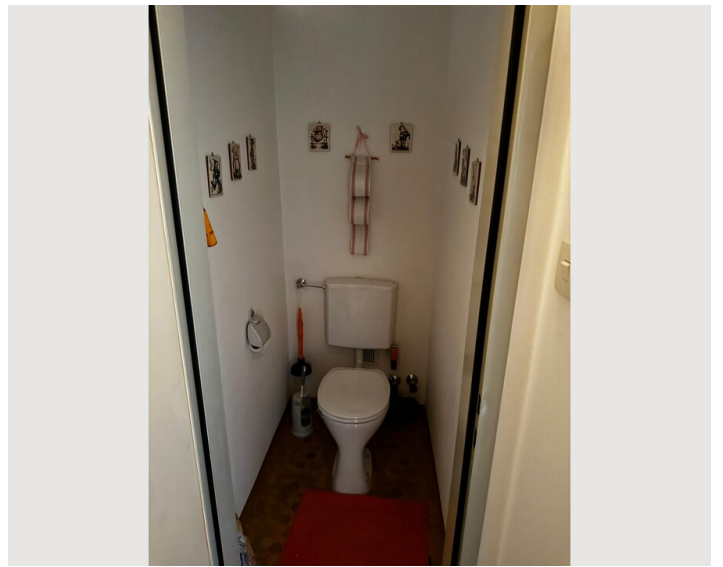
- Private kitchen
- Glasses/Tableware
- Cooking utensils

Informations

- Suitable for construction workers
- Desk/Workplace
- Bicycle room free of charge
- Smoking not allowed
- Pets on request

Picture gallery





Infrastructure



approx. 15 min by public transport; 10 min by car



in front of the building

The apartment is located in a quiet yet central area of Leonding with excellent connections to Linz and Linz-Hörsching Airport.

Public Transport:

Tram and bus stops within walking distance

Linz Central Station (Hauptbahnhof):

By public transport: approx. 15–20 minutes

By car: approx. 10 minutes

Linz-Hörsching Airport (LNZ):

By public transport: approx. 30 minutes

By car: approx. 15 minutes

Shops & Essentials:

Supermarkets (Billa, Hofer) – approx. 5 minutes on foot

Pharmacy & medical center – approx. 10 minutes on foot

Fitness studios & sports facilities – nearby

Parks & recreational areas – within walking distance

Highway access for quick connections to Linz and surrounding areas

Location

