



HOUSE, 5020 SALZBURG

Charming 4 room semi-detached house

Object number: QWOE1

[View and rent online](#)

Stylish semi-detached house, fully furnished, with small garden, terrace and balcony. Excellent infrastructure, bus stop and the local recreation area Hellbrunner Allee within walking distance or with the bicycles provided.

| | |
|--------------------------|---------------------|
| Period | 07/04/ - 07/05/2026 |
| Number of persons | 2 |
| Total incl. VAT. | € 3.365,38 |
| Security deposit | € 2.600,00 |



Living space

130m²



Maximum occupancy

5 Persons



Complete accommodation [?]

2 Private bathrooms 3 Separated bedrooms



2. floor



Check-in

08:45 - 11:46 Clock



Check-out

08:47 - 11:48 Clock

Sleeping options

Bedroom 1



1x Double bed (1,80 m x 2 m)

Bedroom 2



1x Double bed (1,80 m x 2 m)

Bedroom 3



1x Single bed

Descripton of accommodation

The spacious, cozy and southeast-facing half of the house with terrace, balcony and garden is furnished in country house style.

Naturally comfortable with the best equipment.

Equipment & Features



Basic equipment

- Balcony
- Garden
- Internet/Wifi
- Private washing machine
- Towels
- Private parking space
- Iron & ironing board
- Hairdryer
- Terrace
- Garden sharing
- TV
- Bedclothes
- Private toilet
- Vacuum cleaner
- Cleaning utensils



Fireplace

- Sweden Stove



First supply

- Toilet paper
- Soap
- Fridge filling on request
- shampoo
- Nespresso capsules



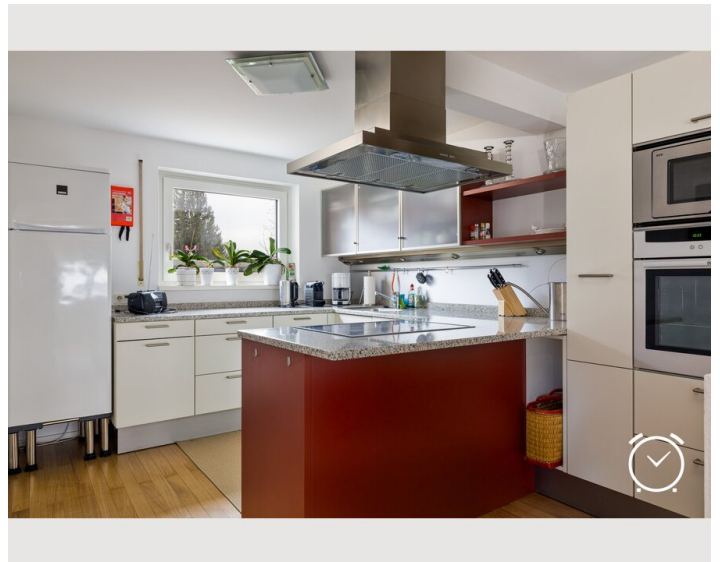
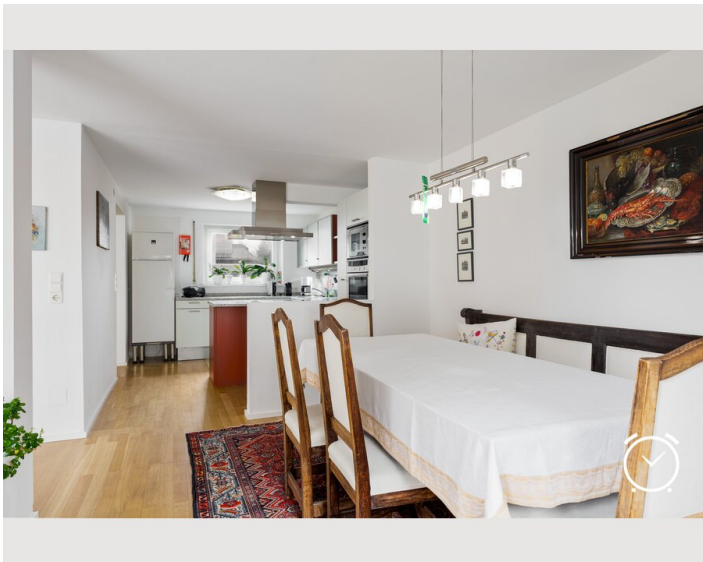
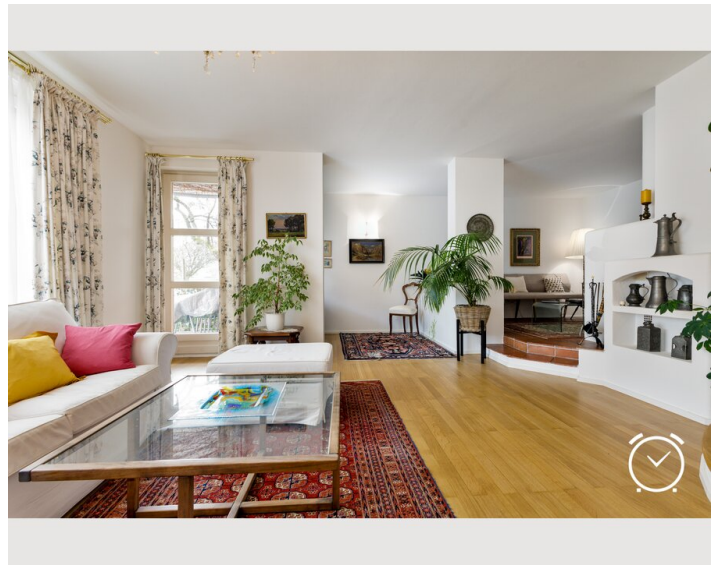
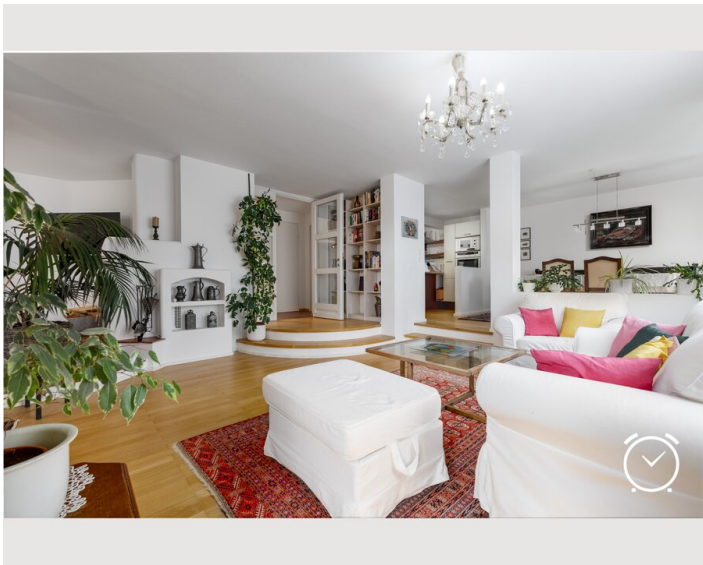
Kitchen

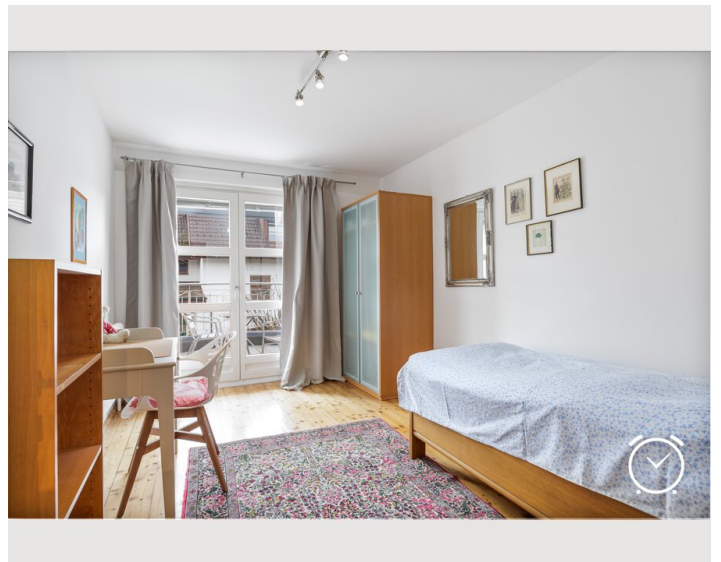
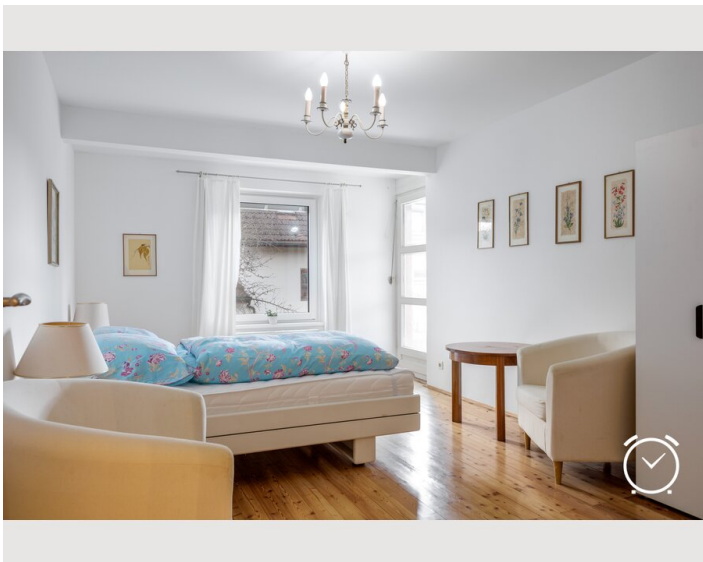
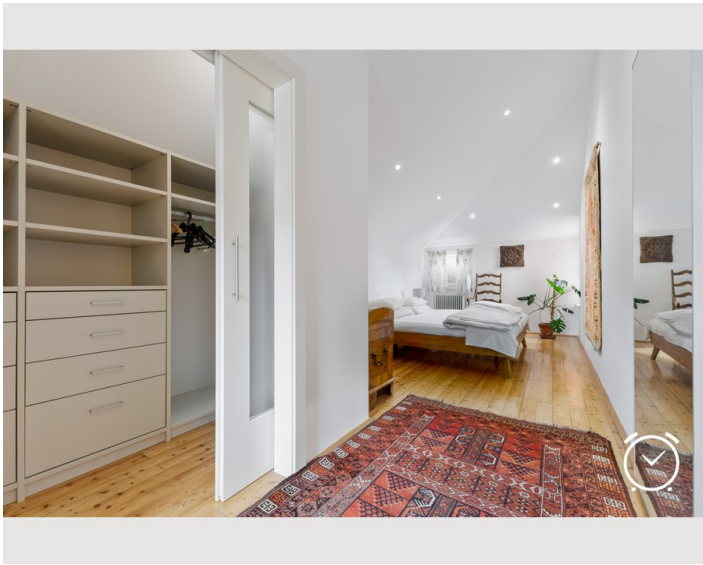
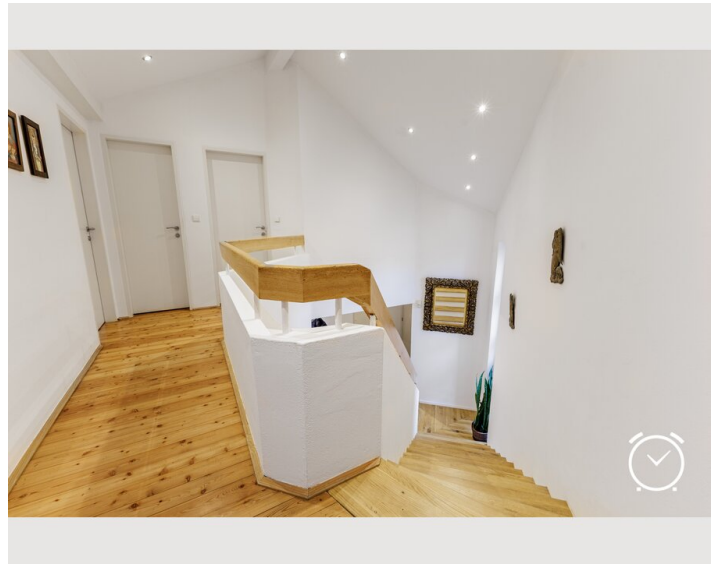
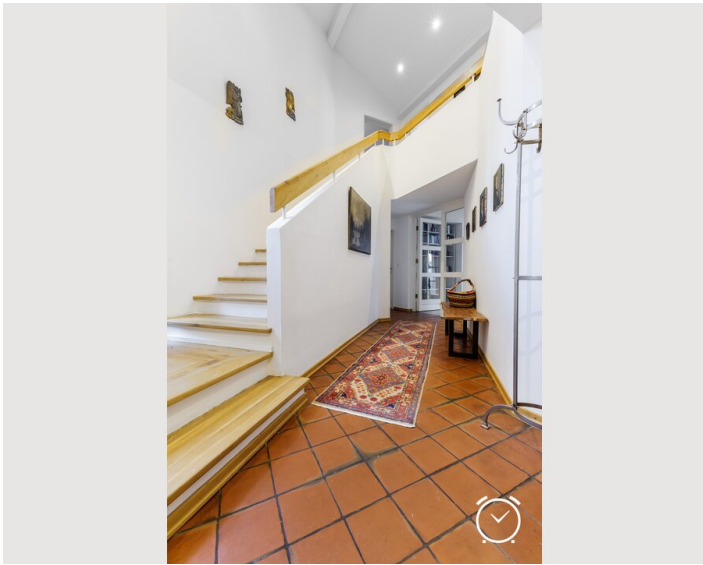
- Private kitchen
- Glasses/Tableware
- Filter coffee
- Microwave
- Cooking utensils
- Espresso machine
- Dishwasher

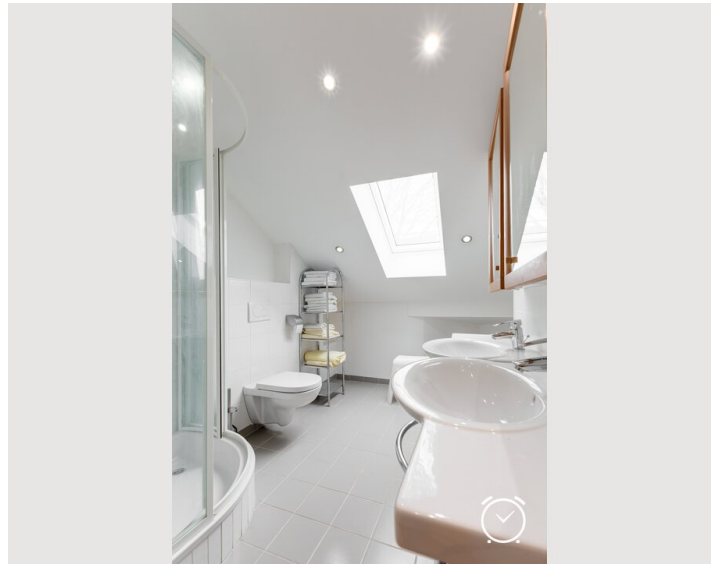
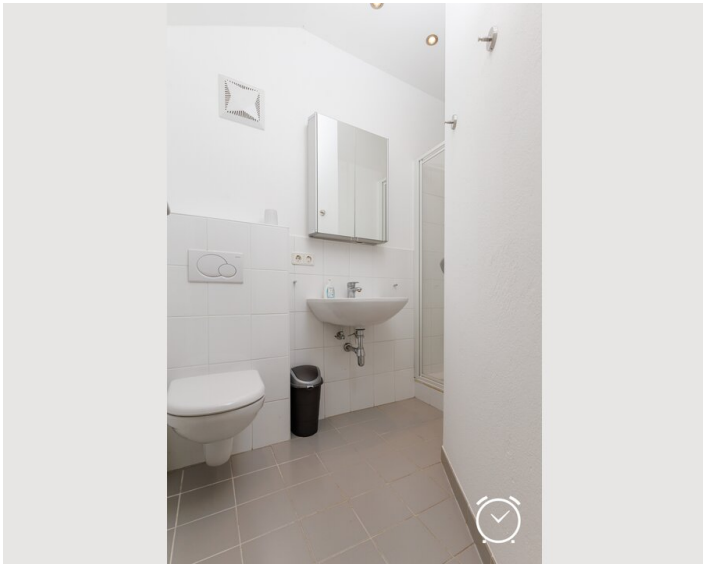
Informations

- Suitable for children
- Private entrance
- Regular cleaning at extra cost
- Smoking not allowed
- Pets on request
- Bicycle room free of charge

Picture gallery








Video


[Goto Video](#)



Infrastructure

 food market in view

 City center in short distance

 bus stop in view

Supermarket and bus stops are within sight. A bakery, café, doctors and pharmacy are just a few minutes' walk away.

Location

