



4 ROOM APARTMENT AND MORE, 5310 MONDSEE

PENTHOUSE Mondsee, within walking distance to the lake

Object number: WESA1

[View and rent online](#)

Period	20/12/2025 - 20/01/2026
Number of persons	2
Total incl. VAT.	€ 8.379,38
Security deposit	€ 6.100,00

NEW BUILD Penthouse with lake view in Mondsee, just a 5-minute walk to the lake



Living space

125m²



Maximum occupancy

6 Persons



Complete accommodation [?]

1 Private bathroom 3 Separated bedrooms



2. floor



Check-in

07:00 - 11:00 Clock



Check-out

08:00 - 11:00 Clock

Sleeping options

Bedroom 1



1x Double bed (1,80 m x 2 m)



1x Children/baby bed

Bedroom 2



2x Single bed

Bedroom 3



1x Double bed (1,40 m x 2 m)

Descripton of accommodation

The apartment is located near Lake Mondsee, just 300 meters from the shore! Only a five-minute walk to the public bathing area Schwarzindien, an ideal spot to enjoy the day and unwind at the bathing buffet while watching the sunset. Almost everything can be done on foot, with a two-minute walk to local shops, the elementary school, and the kindergarten with a toddler group. The market center of Mondsee can be reached on foot in ten minutes or by car in two minutes. Mondsee offers a variety of amenities, including bakeries, restaurants, bars, doctors, local suppliers, as well as museums and art. With breathtaking lake views, a generous living space of 125 m², and high-quality furnishings, this apartment is an oasis of elegance and comfort.

– Location: The penthouse is ideally situated in a quiet residential area, just a few minutes' walk from the idyllic shores of Lake Mondsee. – Living Space: With a spacious living area of 125 m², this apartment offers plenty of room for individual expression. – Panoramic View: Start your day with stunning views of Lake Mondsee and let the rising sun inspire you. – Room Height up to 4.20 m: The generous room design with impressive ceiling height creates a unique living experience. – Rooftop Terrace: Enjoy unforgettable sunsets on the private rooftop terrace. – Rarity in a Small Residential Building: This exclusive apartment is part of a small residential building with only four units, offering the highest level of privacy. – High-Quality Furnishings: Mafi oak parquet flooring, flush doors, and baseboards are a testament to exquisite quality. – Open Fireplace: The open fireplace in the living area creates a cozy atmosphere and invites relaxation. – Designer Kitchen by a Carpenter: The state-of-the-art carpenter kitchen is not only functional but also an aesthetic highlight. – Smart Home Integration: The lighting concept, combined with a smart home system (KNX) controlled via smartphone, allows for customized lighting moods. – Bathroom with Rain Shower: The spacious bathroom features an open shower with a rain showerhead and is complemented by custom-made wooden furniture crafted by a carpenter.

Equipment & Features



Basic equipment

- Roof-terrace
- Private toilet
- Internet/Wifi
- Private parking space



Fireplace

- Open fireplace



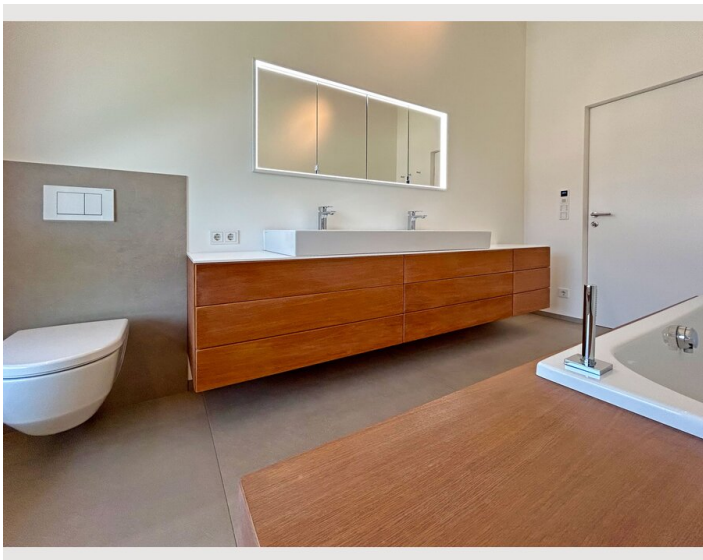
Kitchen

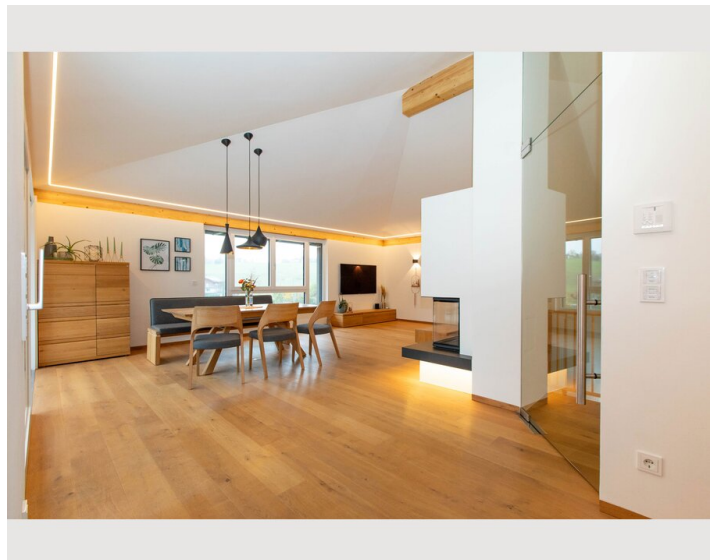
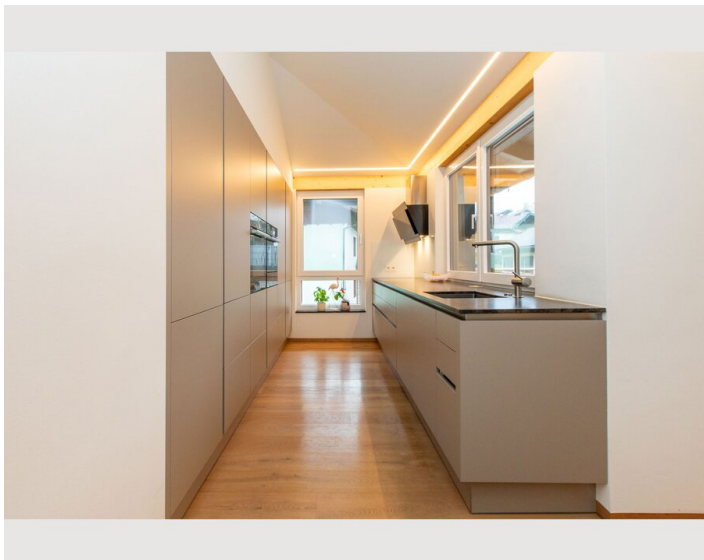
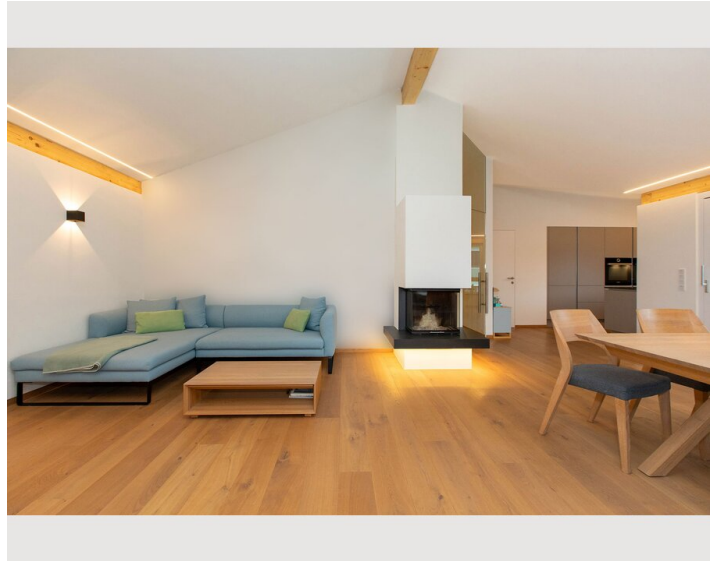
- Private kitchen
- Dishwasher
- Steam cooker

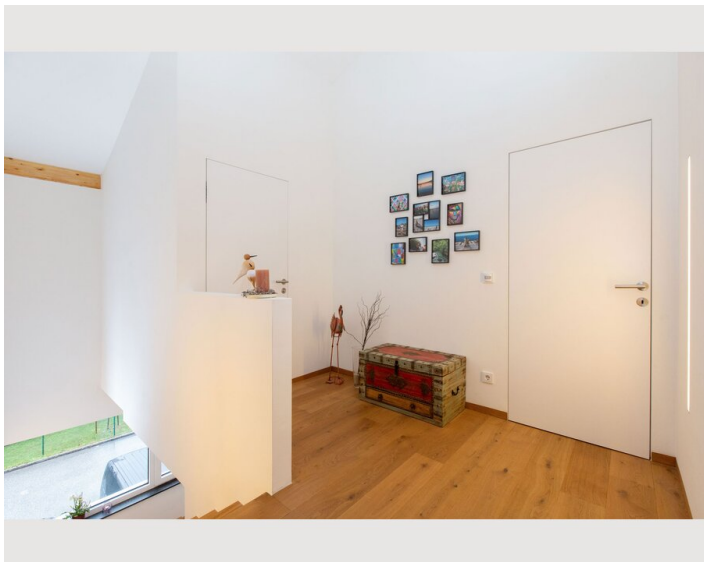
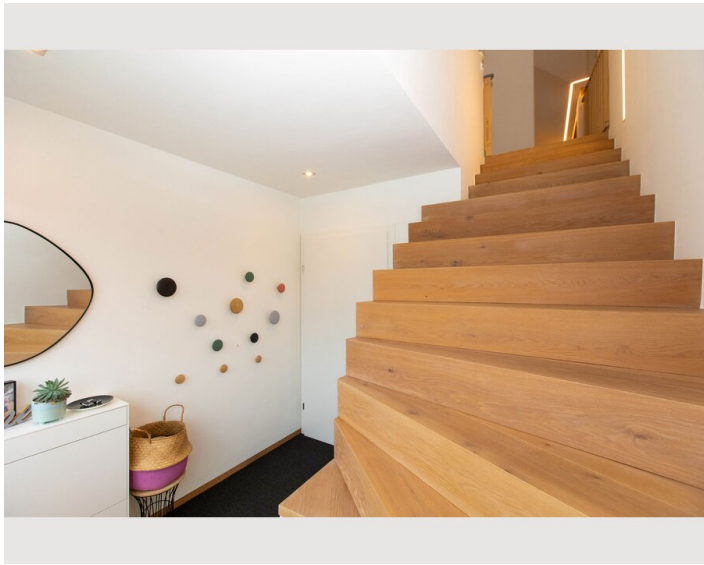
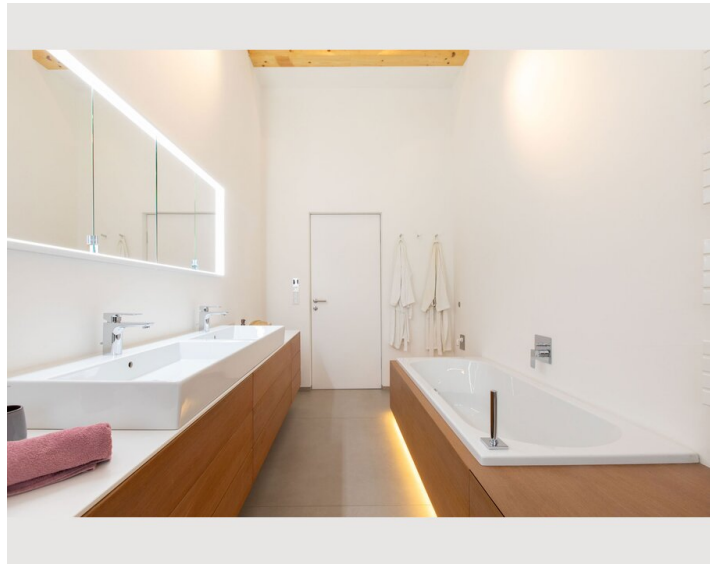
Informations

- Suitable for children
- Desk/Workplace
- Pets forbidden
- Bicycle room free of charge
- Smoking not allowed
- Private entrance
- Regular cleaning at extra cost

Picture gallery







Infrastructure



Almost everything can be done on foot, with just a two-minute walk to local shops, the elementary school, and the kindergarten with a toddler group. The market center of Mondsee can be reached on foot in ten minutes or by car in two minutes.

It's only a five-minute walk to the public bathing area Schwarzindien, an ideal spot to enjoy the day and unwind at the bathing buffet while watching the sunset.

Location

