



2 ROOM APARTMENT, 4020 LINZ

Bright Apartment Above the Rooftops of Linz - Right by the Train Station

Object number: VPSO1

[View and rent online](#)

Enjoy the perfect mix of central location and quiet living with an incomparable view over the city.

| | |
|--------------------------|---------------------|
| Period | 18/04/ - 18/05/2026 |
| Number of persons | 2 |
| Total incl. VAT. | € 2.052,42 |
| Security deposit | € 1.700,00 |



Living space

43m²



Maximum occupancy

2 Persons



Complete accommodation [?]

1 Private bathroom 1 Separated bedroom



16. floor

Elevator available



Check-in

09:00 - 20:00 Clock



Check-out

09:00 - 15:00 Clock

Sleeping options

Sleeping room



1x Double bed (1,80 m x 2 m)

Description of accommodation

Whether you're in town for a project assignment, need to bridge between two apartments, or simply want to enjoy city life in Linz for a while - this beautiful two-room apartment in the modern high-rise "Blickpunkt" offers you the perfect retreat.

Availability: September 1 to April 30

Highlights:

- 43m² living space on the 16th floor
- Breathtaking view over Linz
- Separate bedroom and living kitchen
- Fully equipped kitchen for comfortable cooking and living
- Bright, southwest-facing rooms
- Loggia for relaxing moments outdoors
- Modern air conditioning and ventilation

Equipment & Features



Basic equipment

- Loggia
- TV
- Bedclothes
- Private toilet
- Vacuum cleaner
- Internet/Wifi
- Private washing machine
- Towels
- Garage
- Hairdryer



First supply

- Toilet paper
- Soap
- shampoo
- Nespresso capsules



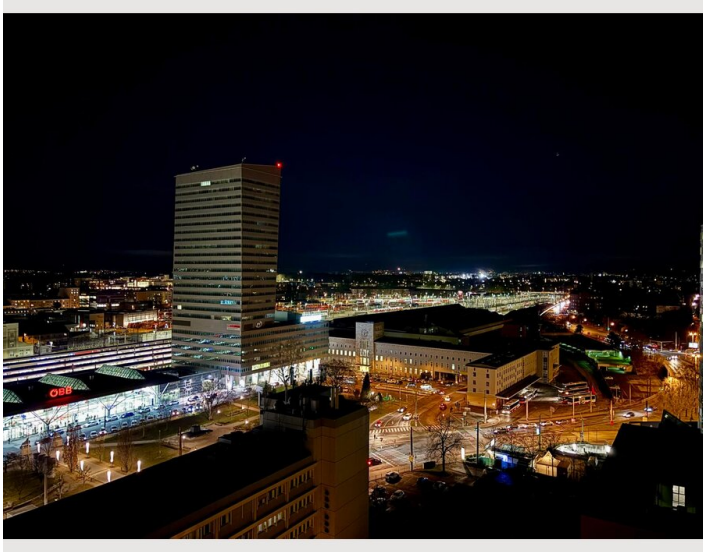
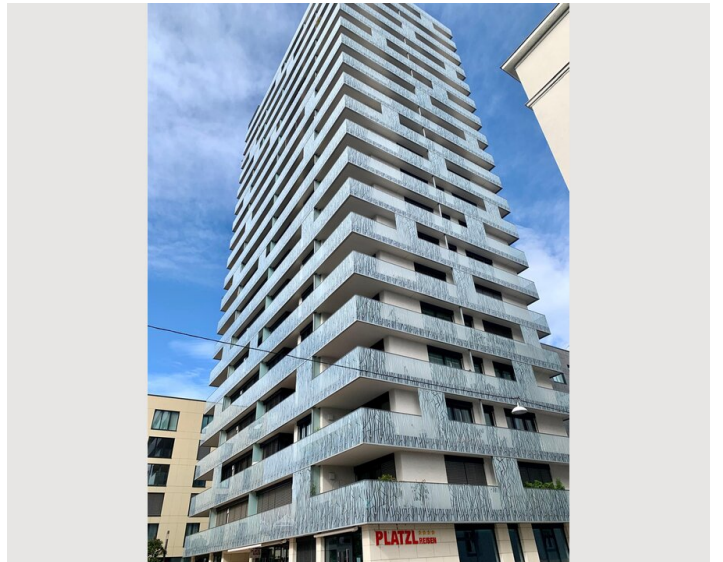
Kitchen

- Private kitchen
- Glasses/Tableware
- Dishwasher
- Cooking utensils
- Espresso machine

Informations

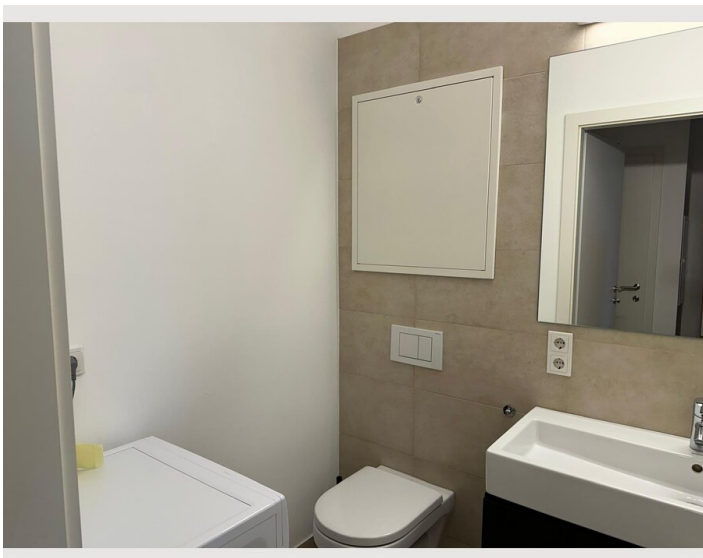
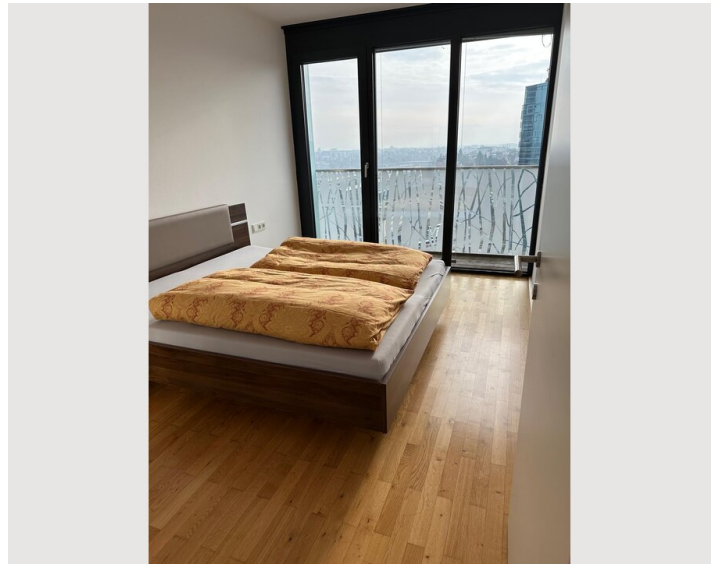
- Smoking not allowed
- Pets forbidden
- Desk/Workplace
- Bicycle room free of charge

Picture gallery



□





Location

