



STUDIO APARTMENT, 9020 KLAGENFURT

## Modernized Studio Apartment in Welzenegg – Quiet & Central

Object number: CGME1

[View and rent online](#)

<b>Period</b>	31/05/ - 01/07/2026
<b>Number of persons</b>	2
<b>Total incl. VAT.</b>	€ 2.435,94
<b>Security deposit</b>	€ 1.900,00

We are renting out a renovated studio apartment (32 m<sup>2</sup>) with a spacious east-facing loggia on the elevated ground floor of a two-story residential building in Welzenegg. The apartment is located in a quiet yet central area and is ideal for short-term



### Living space

32m<sup>2</sup>



### Maximum occupancy

4 Persons



### Complete accommodation <sup>?</sup>

1 Private bathroom 1 Living-Sleepingroom



### 1. floor



### Check-in

13:00 - 23:00 Clock



### Check-out

08:00 - 10:00 Clock

## Sleeping options

### Living & Sleeping



1x Double bed (1,80 m x 2 m)



1x Sofa bed (2 persons)

## Description of accommodation

### Features & Layout:

- Entrance area with modern built-in kitchen:
- Stove, microwave, oven
- Dishwasher & refrigerator
- Bathroom:
- Shower, toilet & washing machine
- Living & sleeping area:
- Accommodates up to 4 people
- Windows and balcony door with shutters & insect screens
- Access to the spacious east-facing loggia with blinds for privacy & weather protection
- Additional amenities:
- High-speed internet & Smart TV with Netflix
- Designated parking space near the entrance

## Equipment & Features



### Basic equipment

- Loggia
  - Internet/Wifi
  - Private washing machine
  - Private parking space
  - Garden sharing
  - TV
  - Private toilet
  - Vacuum cleaner
- 



### First supply

- Toilet paper
  - Fridge filling on request
- 



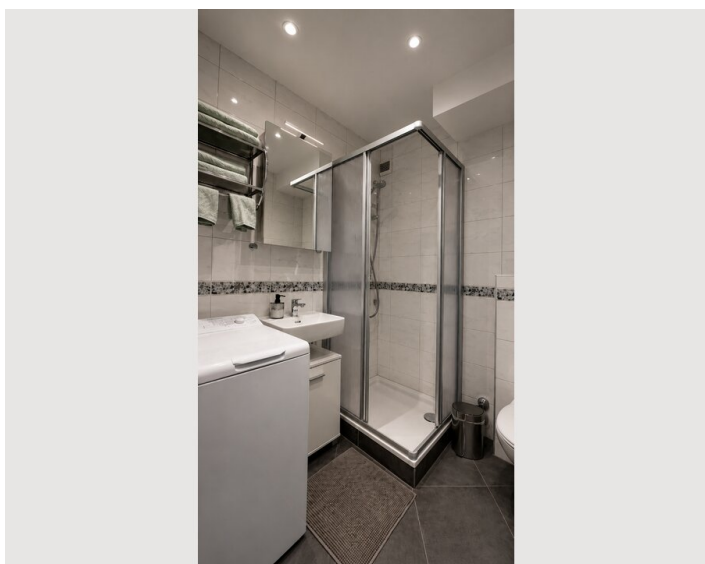
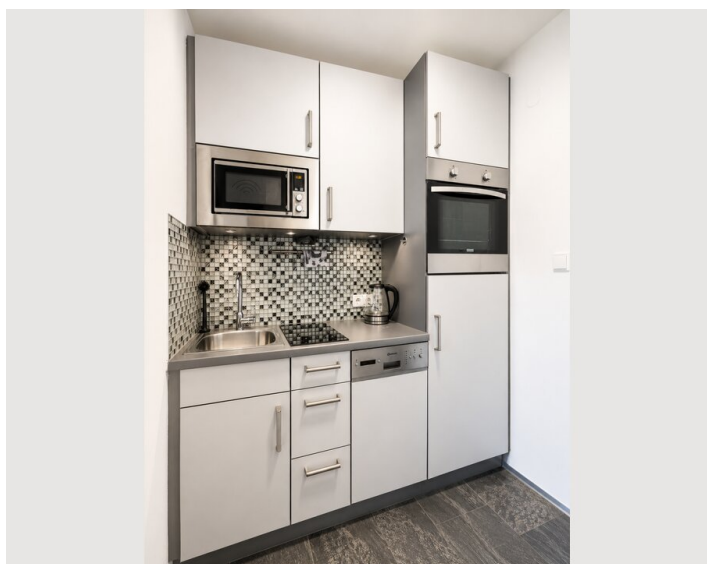
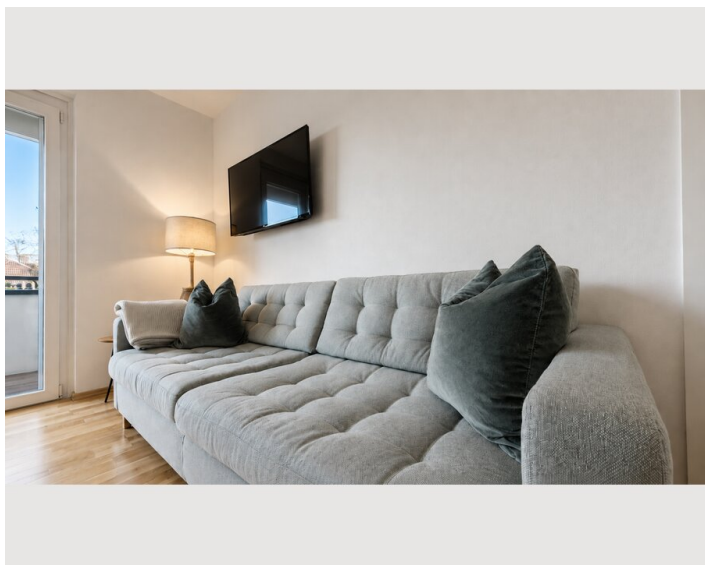
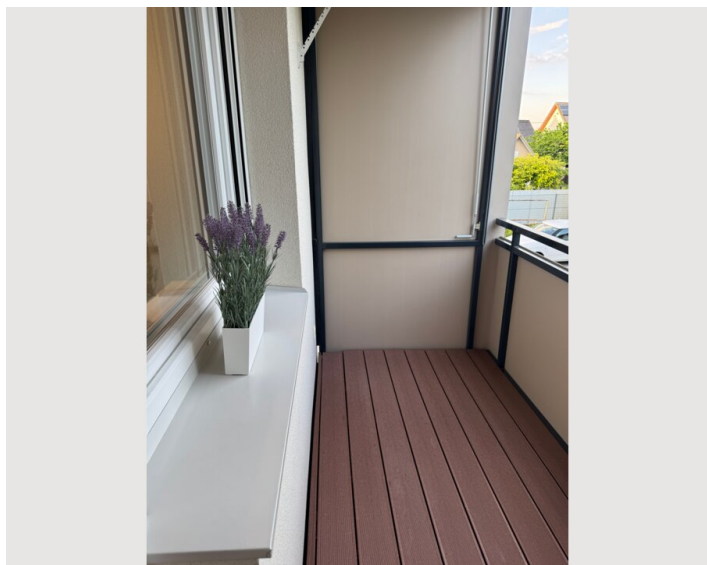
### Kitchen

- Private kitchen
- Glasses/Tableware
- Microwave
- Cooking utensils
- Dishwasher

## Informations

- Suitable for construction workers
- Smoking not allowed
- Bicycle room free of charge
- Suitable for children
- Pets on request

## Picture gallery



## Location

