



HOUSE, 5431 KUCHL

Göllblick

Object number: RTHF1

[View and rent online](#)

This bright, cozy semi-detached house features spacious, newly renovated rooms, and a kitchen equipped with high-quality appliances. It enjoys a green location, with the town center and Golling train station within a 10-minute walk.

| | |
|--------------------------|----------------------------|
| Period | 21/12/2025 - 21/01/2026 |
| Number of persons | 2 |
| Total incl. VAT. | € 3.765,17 |
| Security deposit | € 2.800,00 |



Living space

120m²



Maximum occupancy

5 Persons



Complete accommodation [?]

2 Private bathrooms 3 Separated bedrooms



2. floor



Check-in

13:00 - 20:00 Clock



Check-out

10:00 - 20:00 Clock

Sleeping options

Bedroom 1



1x Double bed (1,80 m x 2 m)

Bedroom 2



1x Double bed (1,80 m x 2 m)

Bedroom 3



1x Single bed

Descriptiton of accommodation

The house consists of two floors, each measuring about 60 m². On the ground floor, there is an entrance hall with a large mirror and a wardrobe. To the right of it is a bathroom with a toilet and shower. From the entrance hall, you reach the staircase. To the left is the kitchen with a bar, and straight ahead is the living-dining room with a large tiled stove. The kitchen and living-dining room are connected and the living room leads to a small terrace with seating possibilities. On the first floor, there is an entrance hall with a built-in closet. From this, you will find two spacious bedrooms, a room with a walk-in closet, and a large bathroom with a bathtub, two sinks, and a toilet. Both bedrooms have private access to the balcony with afternoon sun and beautiful views of the Hoher Goll and Roßfeld mountains. The house was recently renovated. The basement also houses a laundry room with its own washing machine.

Equipment & Features



Basic equipment

- Balcony
- Internet/Wifi
- Private washing machine
- Towels
- Private parking space
- Iron & ironing board
- Hairdryer
- Terrace
- TV
- Bedclothes
- Private toilet
- Vacuum cleaner
- Cleaning utensils



Fireplace

- Tiled stove



First supply

- Toilet paper
- Soap



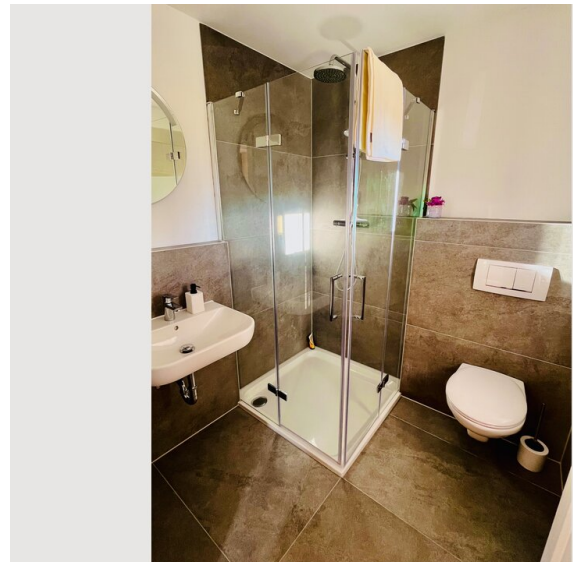
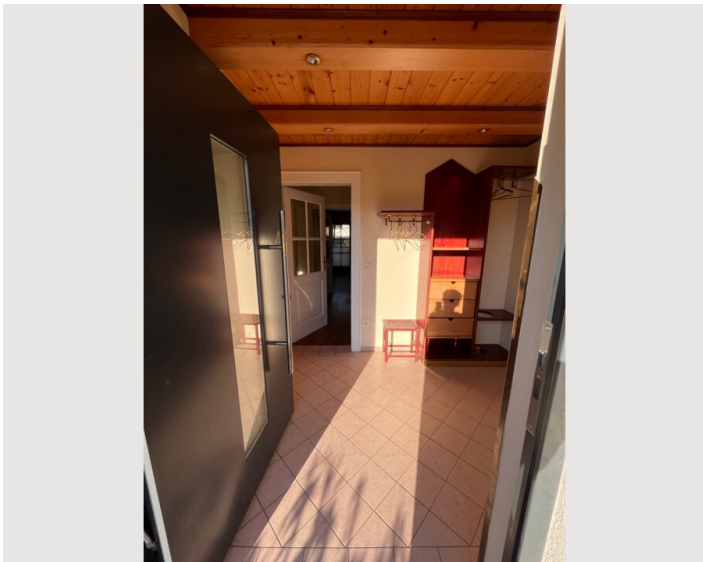
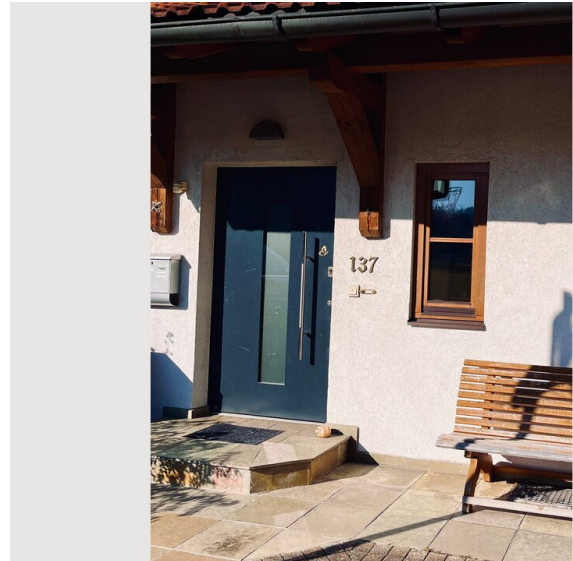
Kitchen

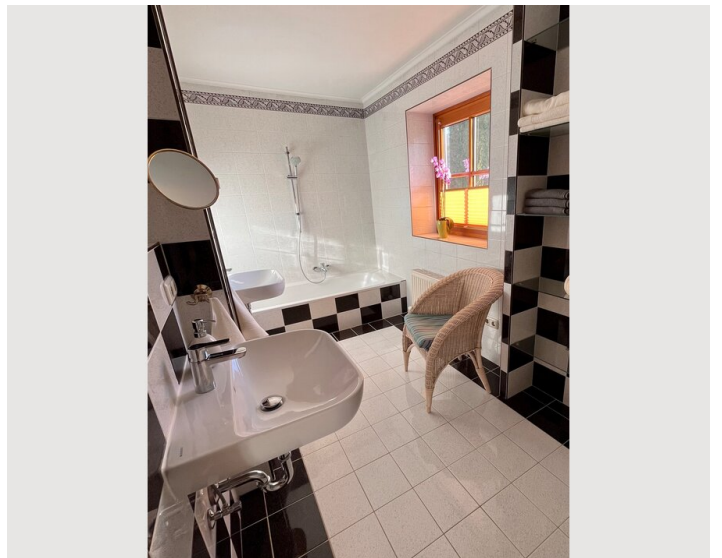
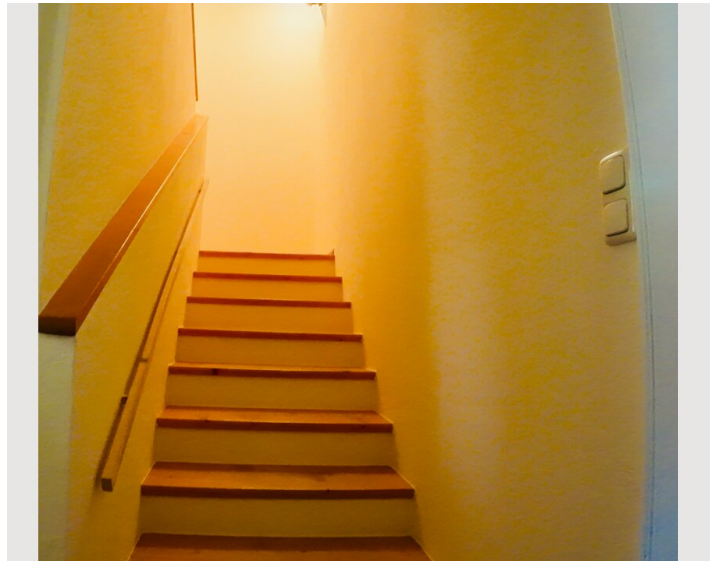
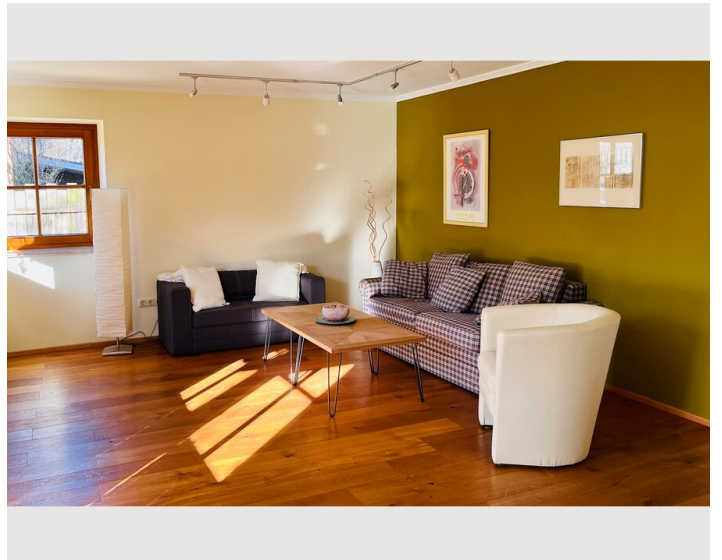
- Private kitchen
- Glasses/Tableware
- Dishwasher
- Cooking utensils
- Filter coffee

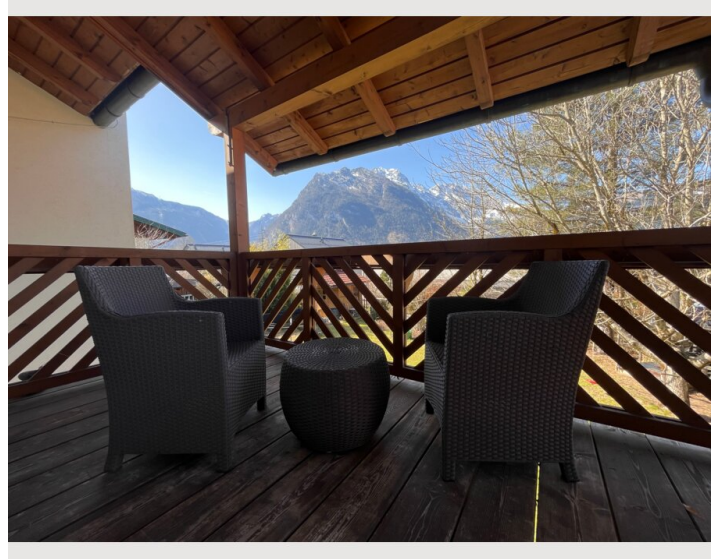
Informations

- Suitable for construction workers
- Smoking not allowed
- Pets forbidden
- Suitable for children
- Private entrance
- Bicycle room free of charge


Picture gallery










Infrastructure

 150m

 10 min. walk

 10 min. walk

 10 min. walk

Although the house is surrounded by greenery and offers numerous opportunities for walks, bike rides, or hikes, the nearest bus stop (towards Hallein/Salzburg) is only 150 meters away. Golling train station is a 10-minute walk away, and from there, Salzburg city center can be reached in no more than 30 minutes. The town center is just a 10-minute walk away (with various restaurants such as the "Restaurant Döllner"), and the nearest supermarket is also within a 10-minute walk. A sports field and skate park are in the immediate vicinity, and attractions such as the Bluntau Valley and the Golling Waterfall are easily accessible by bike.

Location

