



3 ROOM APARTMENT, 5440 GOLLING AN DER SALZACH, SALZBURG

modern appartement in center of Golling

Object number: SOPL1

[View and rent online](#)

Period	16/06/ - 16/07/2025
Number of persons	2
Total incl. VAT.	€ 2.565,52
Security deposit	€ 2.000,00

The furnished, modern appartement is located right in a 2022 erected building in the city of Golling. Every needs are within walking distance. There is an ideal connection either by car or by train in all directions.



Living space

89m²



Maximum occupancy

4 Persons



Complete accommodation [?]

1 private bathroom 2 Separated bedrooms



1. floor

Elevator available



Check-in

09:00 - 11:00 Clock



Check-out

12:00 - 14:00 Clock

Sleeping options

Bedroom 1



1x Double bed (1,80 m x 2 m)

Bedroom 2



2x Single bed

Descripton of accommodation

The 3 room appartement, is located at the first floor. From the anteroom there is the access to a WC and the storeroom. The combined living/dining room has a size of 43m². Furthermore there a 2 bedrooms and a bathroom incl. an additional toilette. The balcony gives you a view of the mountains of the "Tennengau". The apartment is a high luxury one, fully equipped, incl. a working space. Other features: W-Lan, ethernet, cable TV, garage, waching machine incl. a dryer.

Equipment features



Basic equipment

- Balcony
- TV
- Private washing machine
- Bedclothes
- Private toilet
- Vacuum cleaner
- Cleaning utensils
- Internet/Wifi
- Printer
- Private dryer
- Towels
- Garage
- Iron & ironing board



First supply

- Toilet paper
- Soap
- shampoo



Kitchen

- Private kitchen
- Glasses/Tableware
- Dishwasher
- Cooking utensils
- Coffee machine
- Microwave

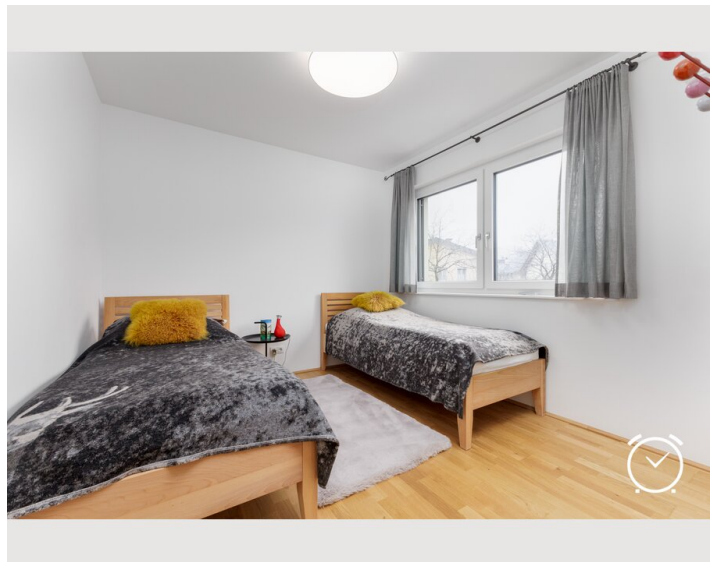
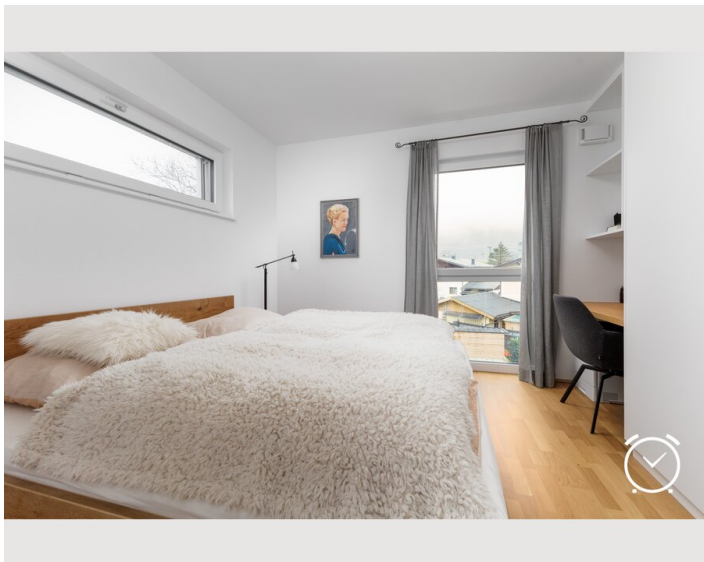
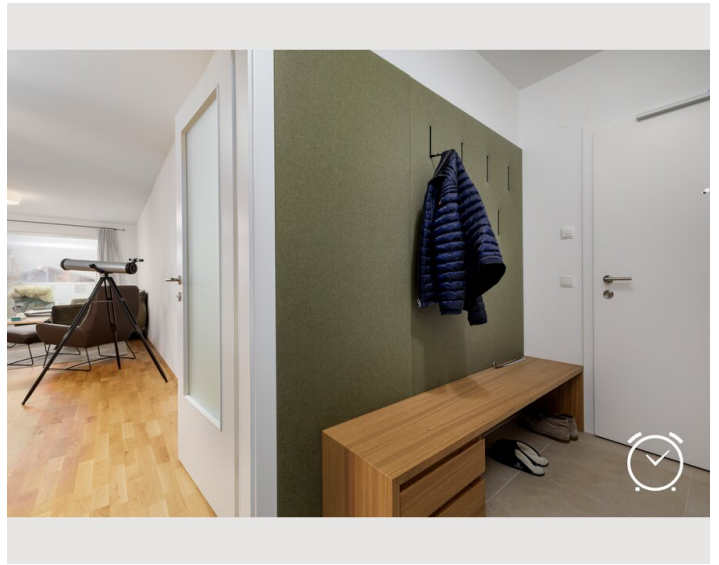
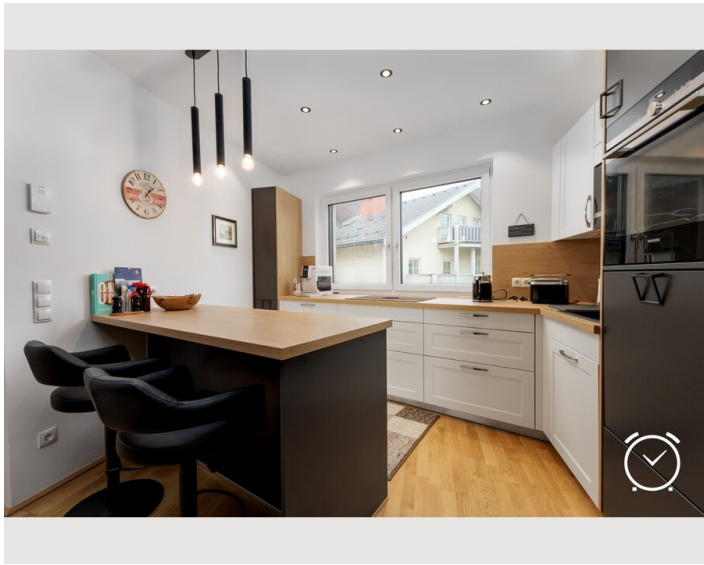
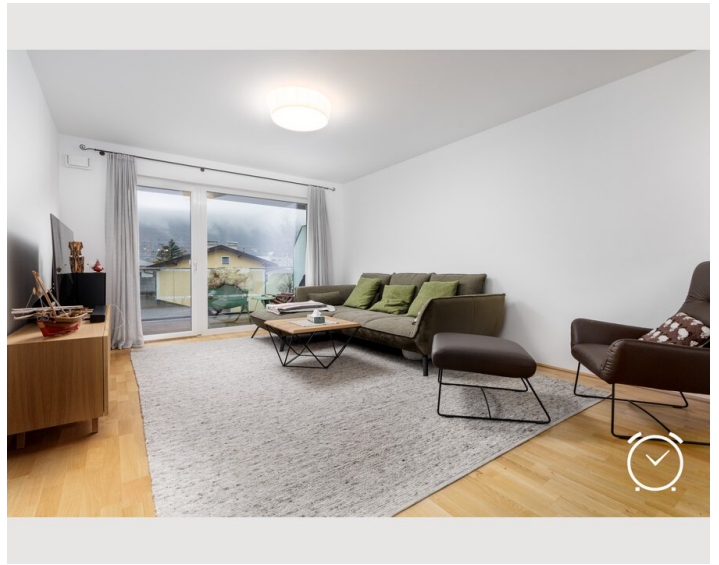
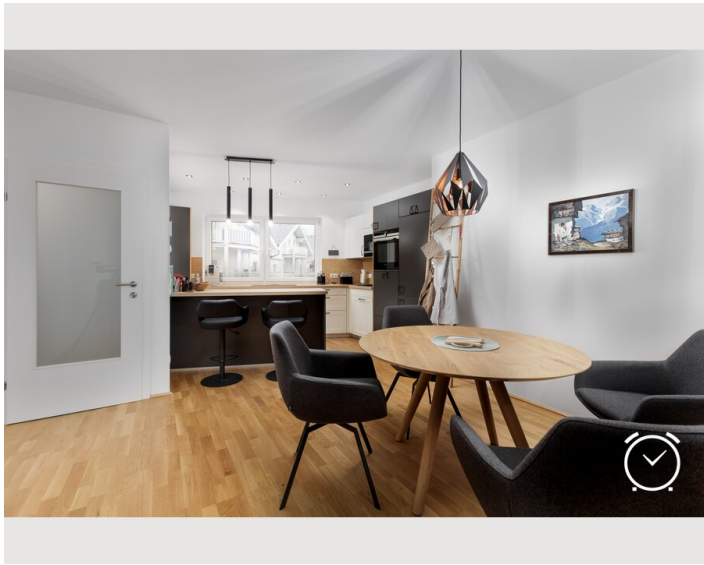
Informations

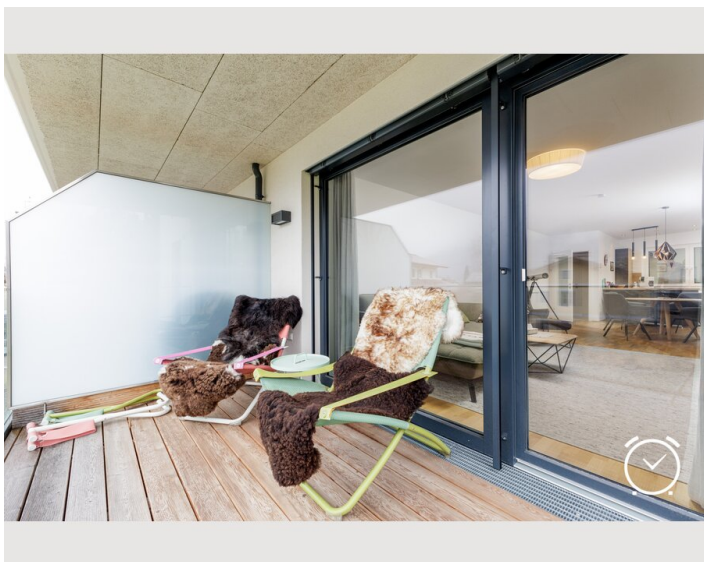
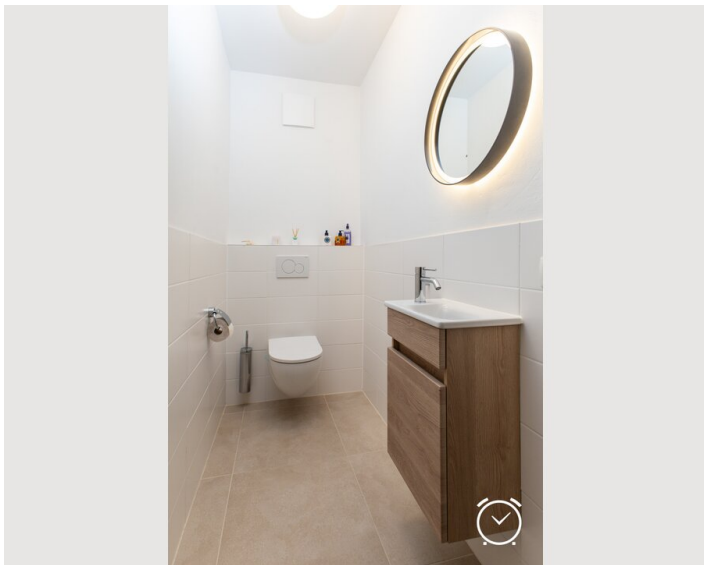
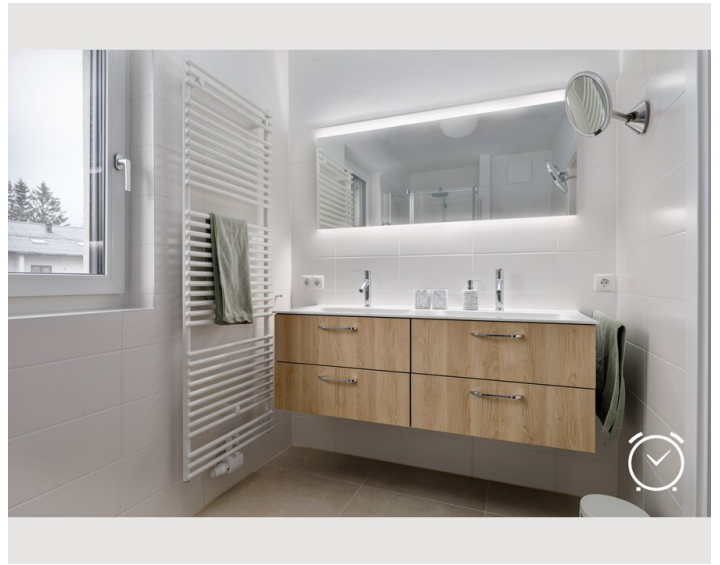
- Smoking not allowed
- Private entrance
- Desk/Workplace
- Pets forbidden

Additional services

All prices are gross per month - billing is done directly with the lessor.

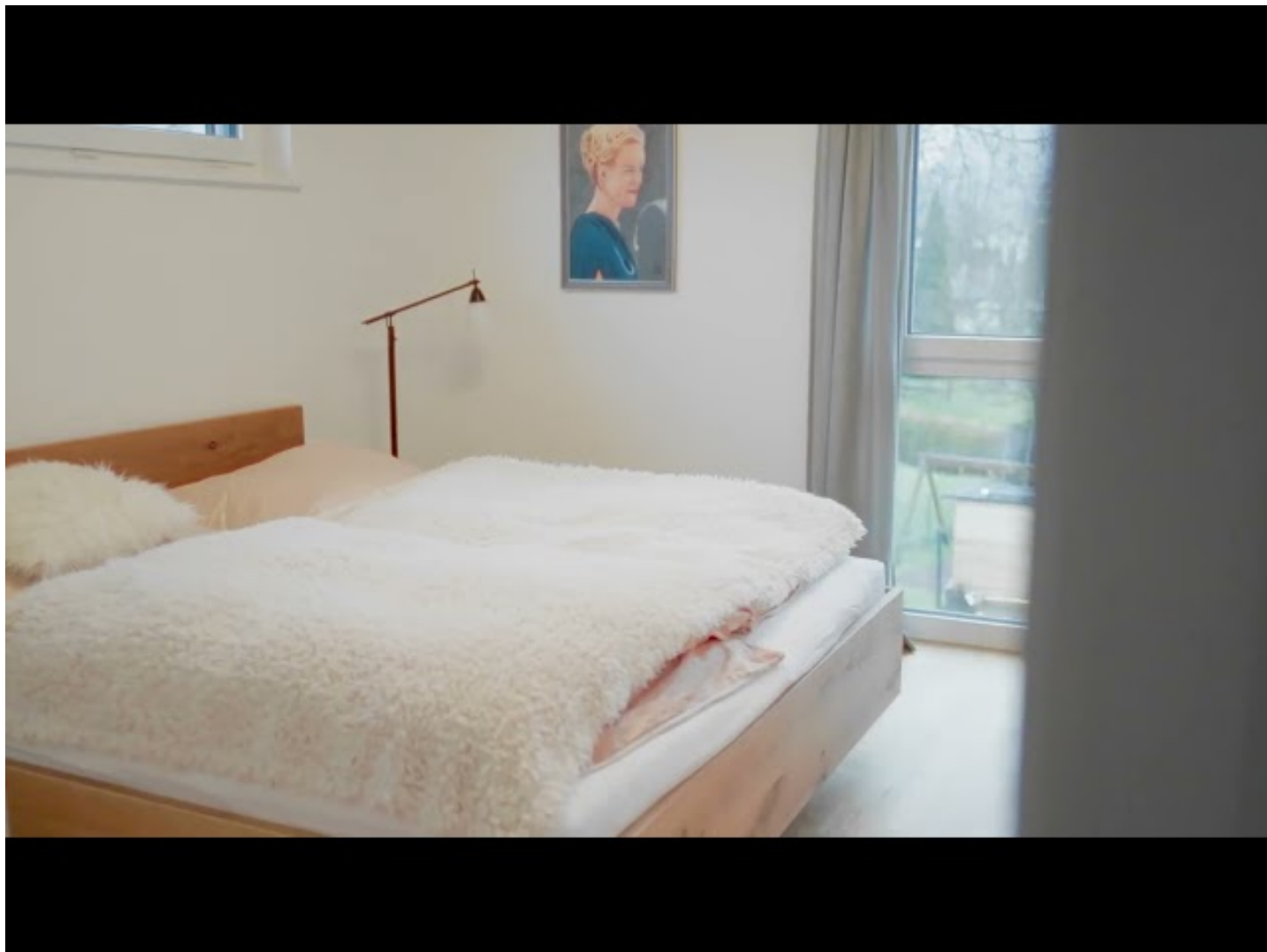
Picture gallery





Video

Goto Video



Infrastructure

📍 center of Golling

🏠 within 1 minutes walking distance

🚶 within 7 minute walking distance

within a few minutes walking distance: supermarketes, bakery, restaurants, pubs & Cafes, hotels, Bank, hair dresser, pharmacy et al.

within two minutes per car: the highway in all directions

within 1 minutes per car: the railway station.

Location

