



STUDIO APARTMENT, 6020 INNSBRUCK

The little bird nest in Innsbruck

Object number: Höttinger Vogelnest

[View and rent online](#)

Little cozy rooftop apartment with a fantastic Mountain View in Innsbruck/Tirol

Period	04/04/ - 04/05/2026
Number of persons	2
Total incl. VAT.	€ 1.781,72
Security deposit	€ 1.400,00



Living space

29m²



Maximum occupancy

2 Persons



Complete accommodation [?]

1 Private bathroom 1 Living-Sleepingroom



2. floor



Check-in

12:00 - 18:00 Clock



Check-out

08:00 - 12:00 Clock

Sleeping options

Living & Sleeping



1x Double bed (1,40 m x 2 m)

Descripton of accommodation

This cosy top floor flat is situated in a quiet location in the Höttinger Au. Strategically ideally located with the Inn cycle path and bus connection right outside the door.

The flat has a large east-facing balcony with spectacular mountain views, ideal for breakfast.

The kitchen is fully equipped and the double bed entices with a high-quality mattress. Grab your toothbrush and move in.

For anyone who needs a parking space: there is the possibility to rent a garage place at the supermarket around the corner for € 80,-/month.

Equipment & Features



Basic equipment

- Balcony
- Private washing machine
- Towels
- Vacuum cleaner
- Cleaning utensils
- Internet/Wifi
- Bedclothes
- Private toilet
- Iron & ironing board
- Hairdryer



First supply

- Toilet paper
- Nespresso capsules
- Soap



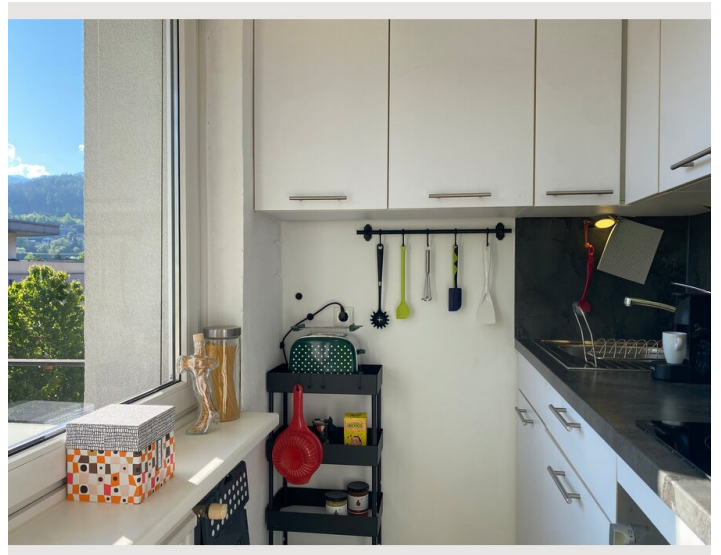
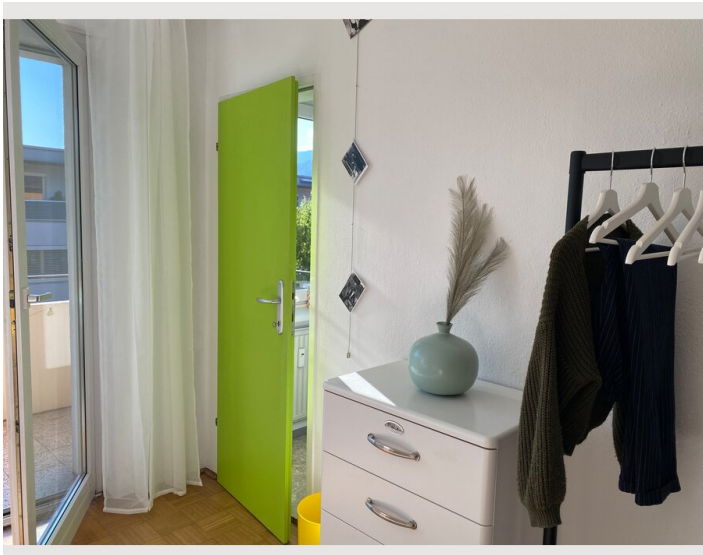
Kitchen

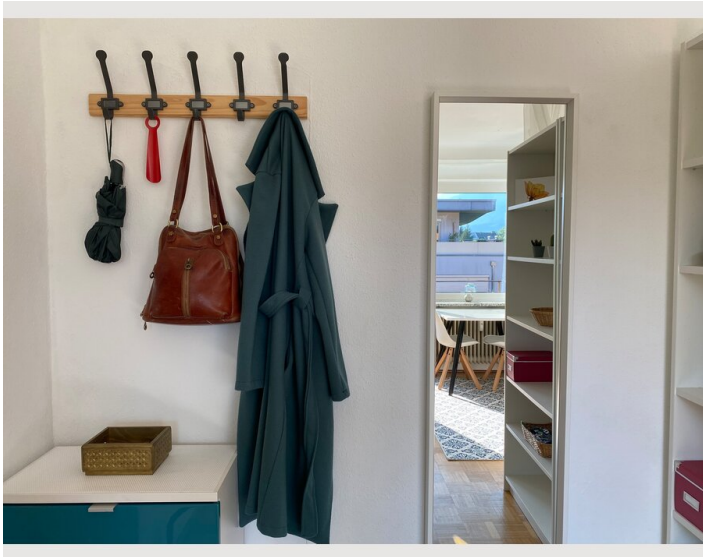
- Private kitchen
- Glasses/Tableware
- Cooking utensils
- Espresso machine

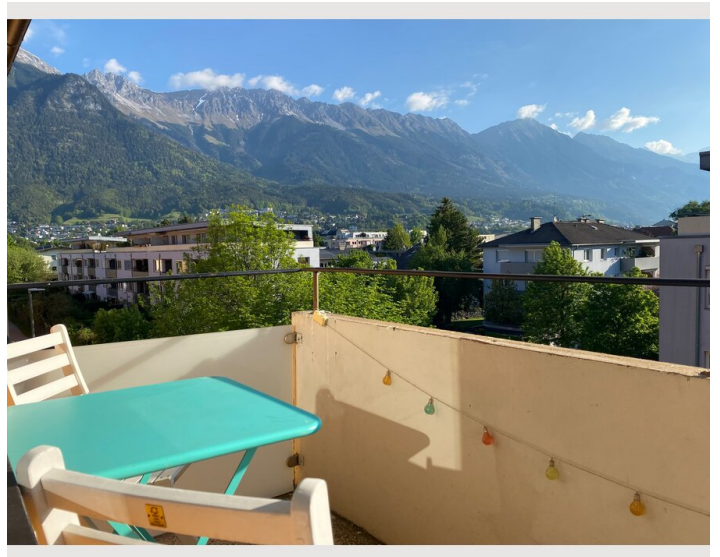
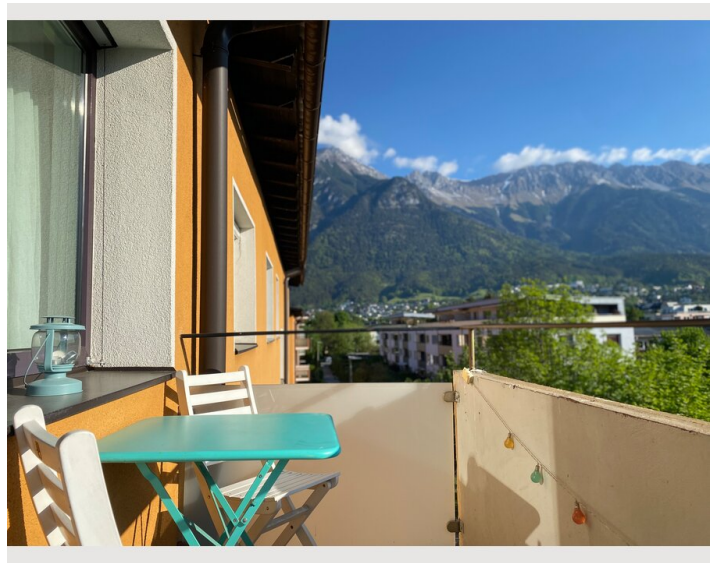
Informations

- Suitable for construction workers
- Smoking not allowed
- Desk/Workplace
- Not suitable for children
- Short-term parking zone subject to a charge
- Pets on request

Picture gallery













Infrastructure

 2 minutes

 1.3 miles

 1.3 miles

 1.9 miles

 2 min

A supermarket, a bank, a chemist and a pharmacy are just a few minutes' walk away. The next bus stop is 2 minutes' walk away, from where you can get directly to the city centre.

The picturesque cycle path along the Inn can be reached just across the road, where you can cycle directly to the centre in a short time without being bothered by traffic.

Next to the flat is a large market garden with direct sales of fresh fruit and vegetables.

Location

