



3 ROOM APARTMENT, 8970 SCHLADMING

das bleibt**** Alpine Suites Schladming

Object number: SOBK1

[View and rent online](#)

You have the freedom to choose from our full-service offerings:
www.dasbleibt.at

Period	30/04/ - 30/05/2026
Number of persons	2
Total incl. VAT.	€ 7.044,07
Security deposit	€ 5.400,00



Living space

65m²



Maximum occupancy

6 Persons



Complete accommodation [?]

2 Private bathrooms 2 Separated bedrooms 1 Living-Sleepingroom



3. floor

Elevator available



Check-in

16:00 - 19:00 Clock



Check-out

08:00 - 10:00 Clock

Sleeping options

Bedroom 1



1x Double bed (1,60 m x 2 m)

Bedroom 2



1x Double bed (1,80 m x 2 m)

Living & Sleeping



1x Sofa bed (2 persons)

Description of accommodation

<https://www.dasbleibt.at/en/rooms/panorama-suite/>

Equipment & Features



Basic equipment

- Loggia
- TV
- Towels
- Private parking space
- Iron & ironing board
- Internet/Wifi
- Bedclothes
- Private toilet
- Vacuum cleaner
- Hairdryer



Wellness

- Sauna



First supply

- Toilet paper
- Soap
- Fridge filling on request
- shampoo
- Nespresso capsules



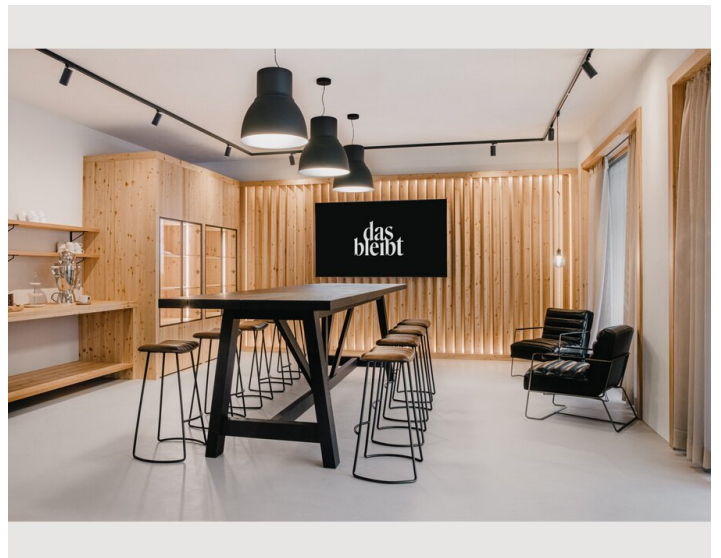
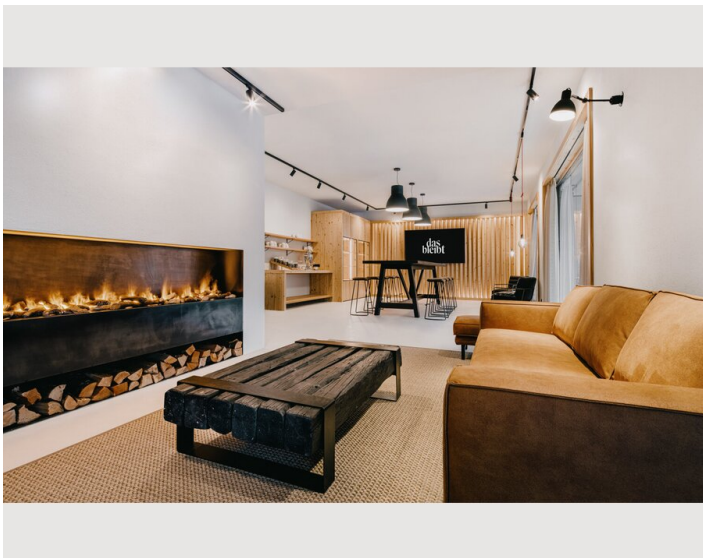
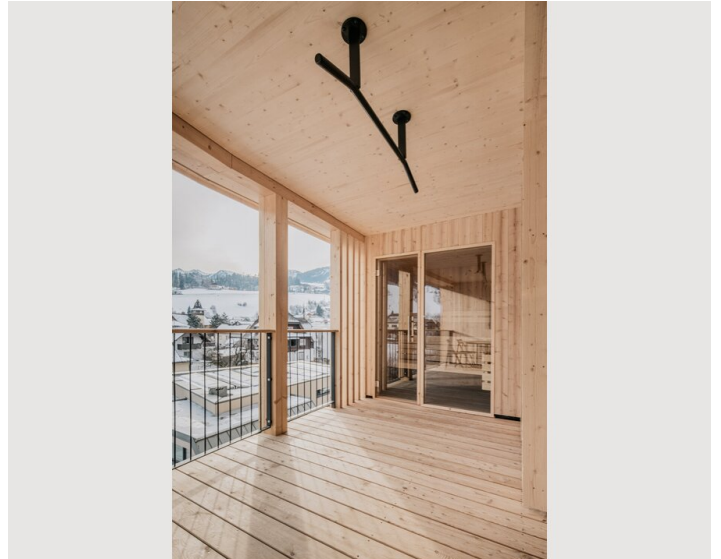
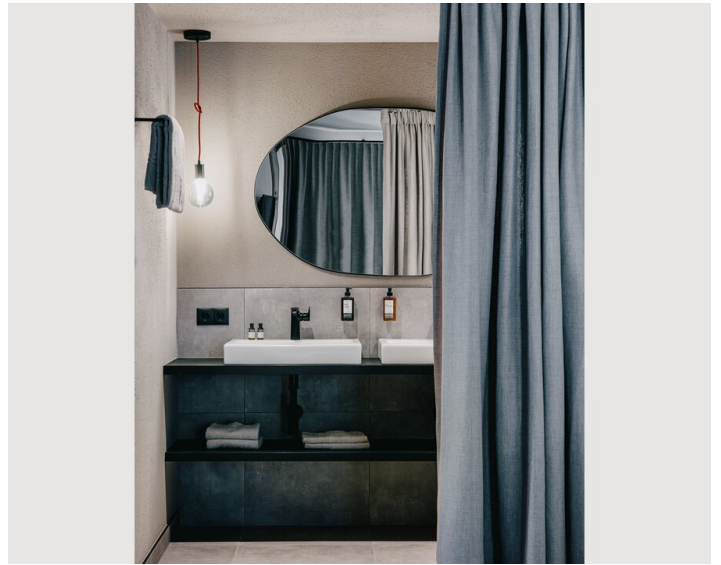
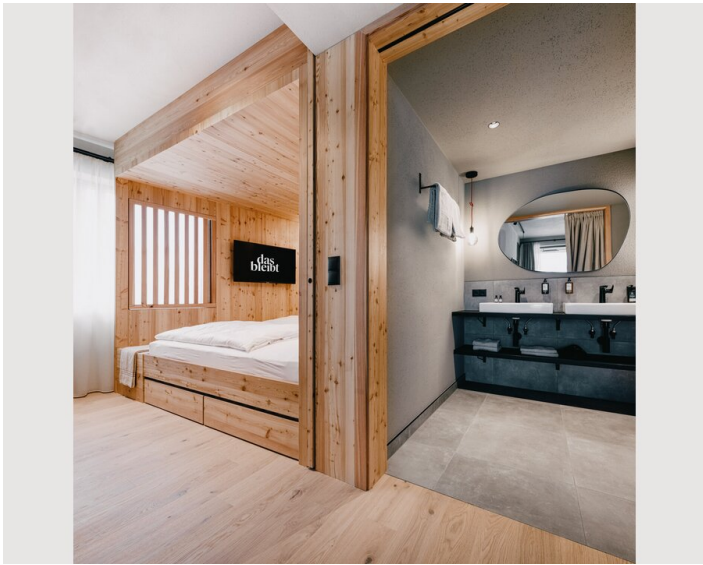
Kitchen

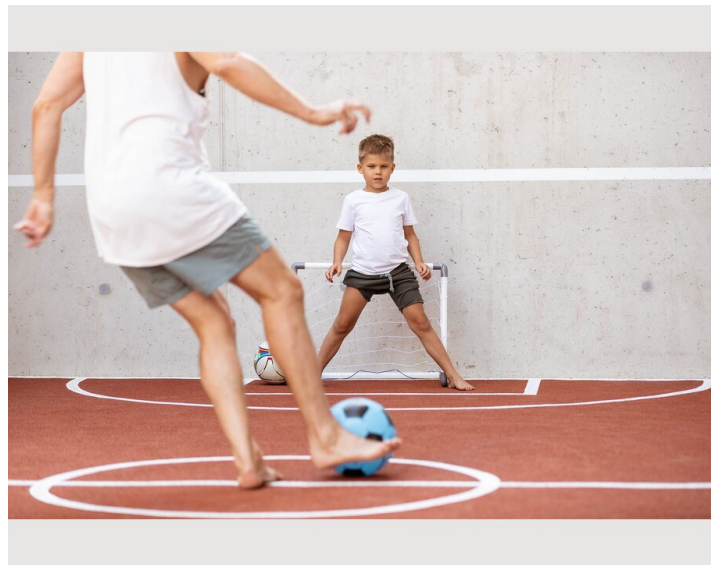
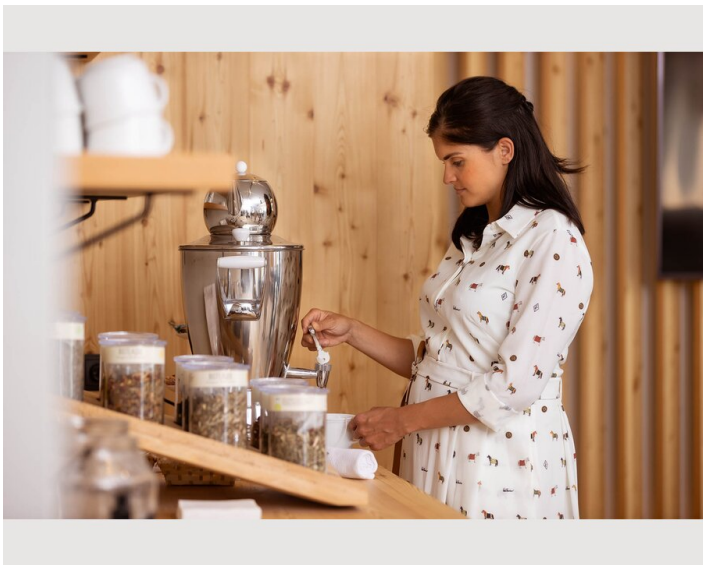
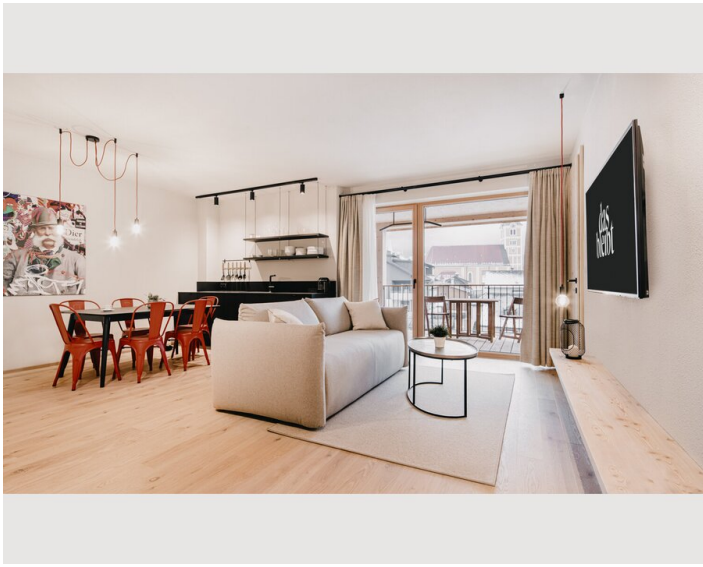
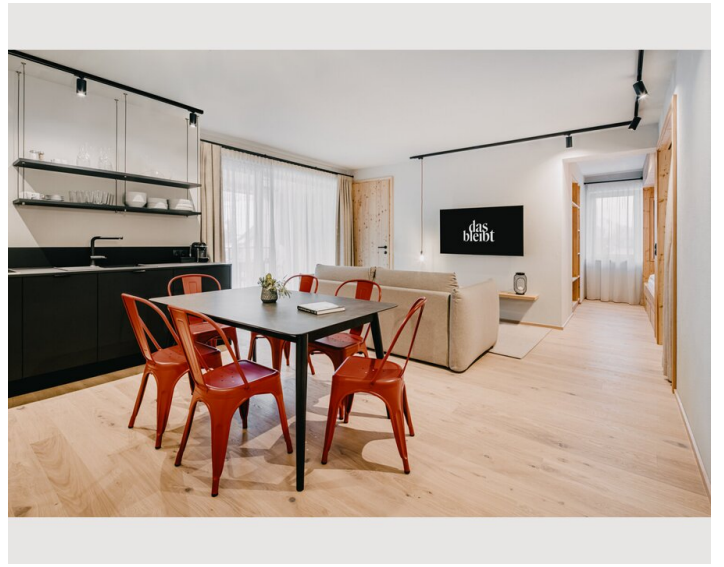
- Private kitchen
- Glasses/Tableware
- Dishwasher
- Cooking utensils
- Espresso machine
- Microwave

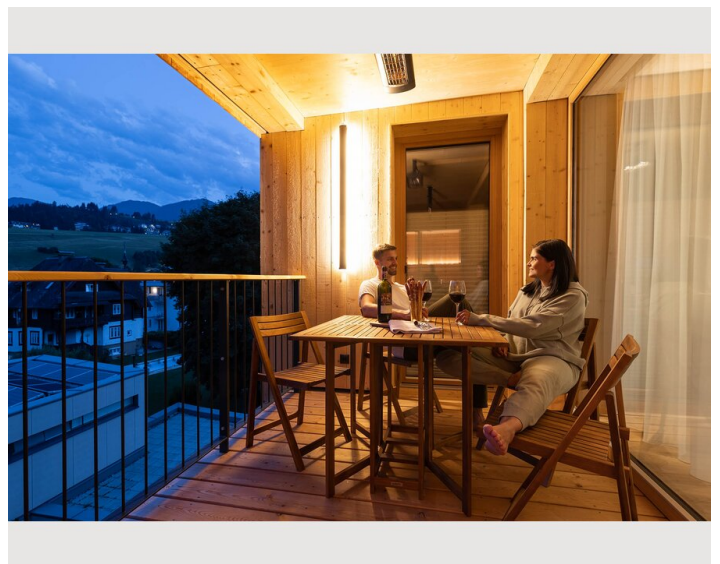
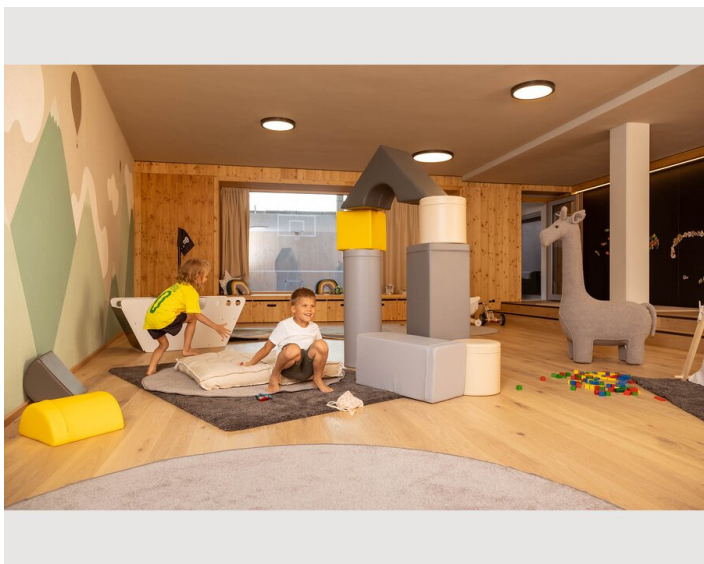
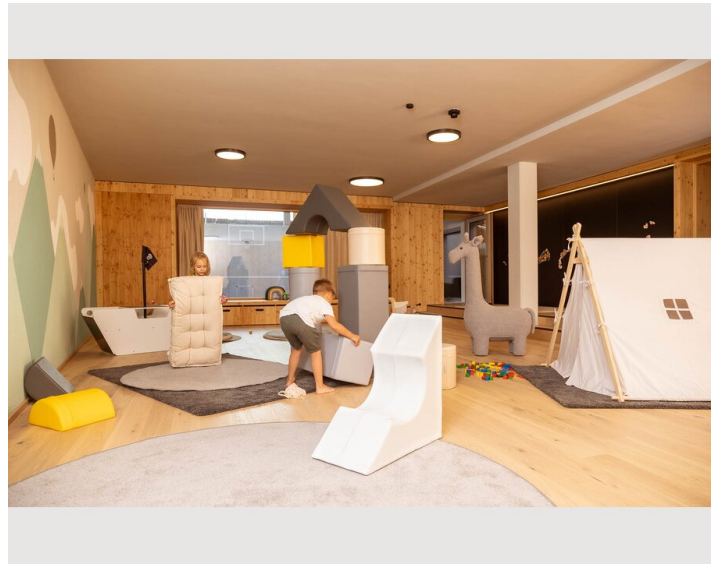
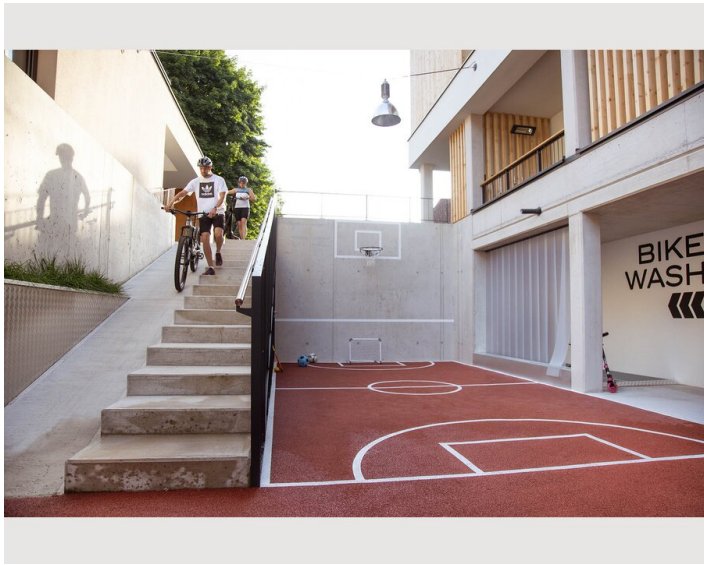
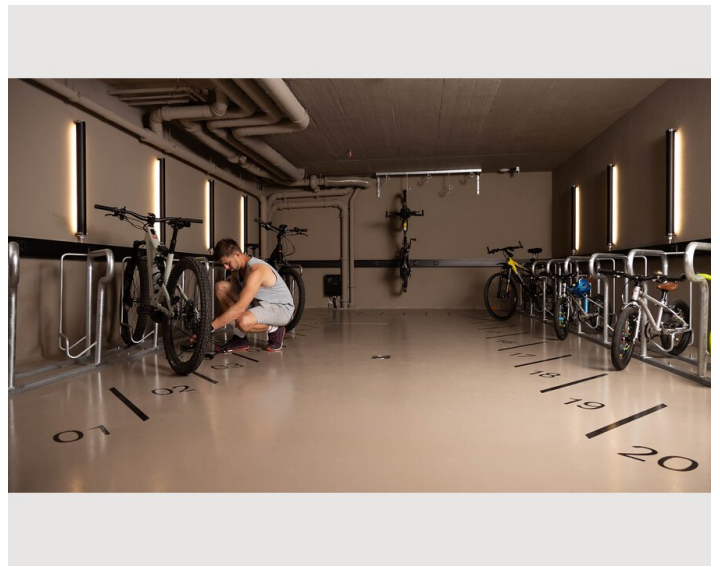
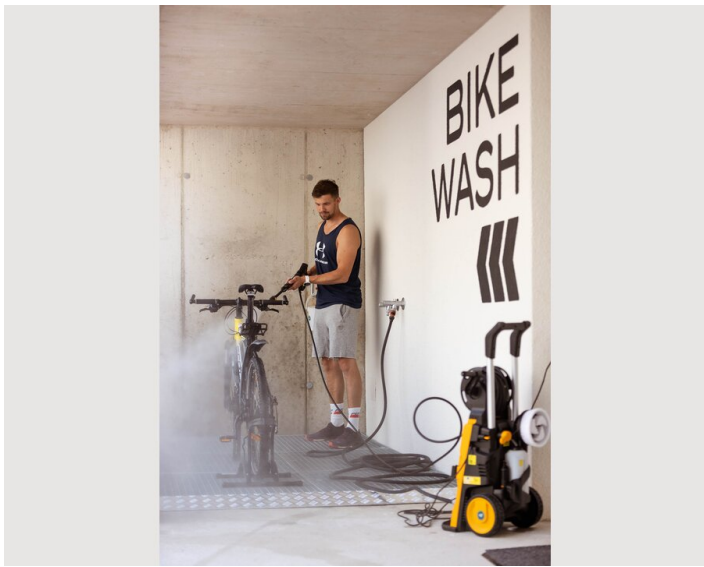
Informations

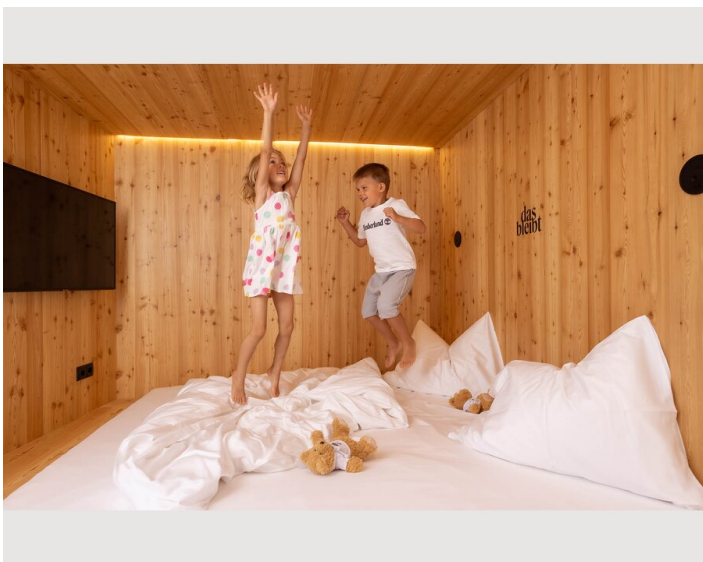
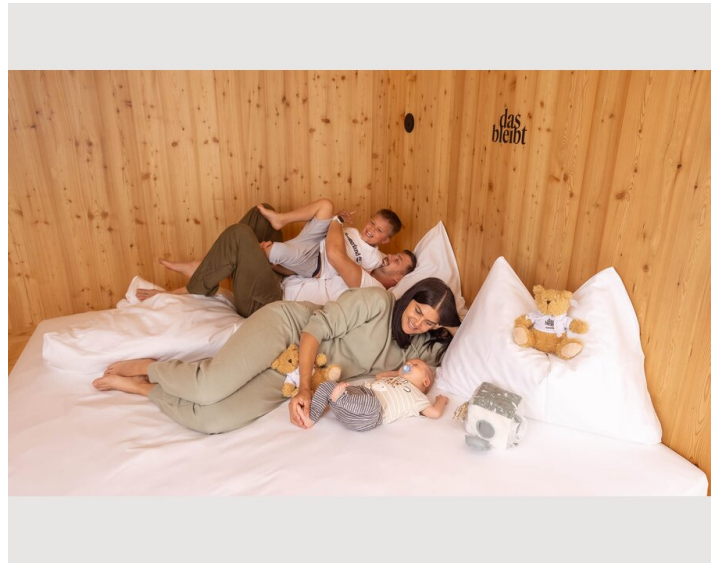
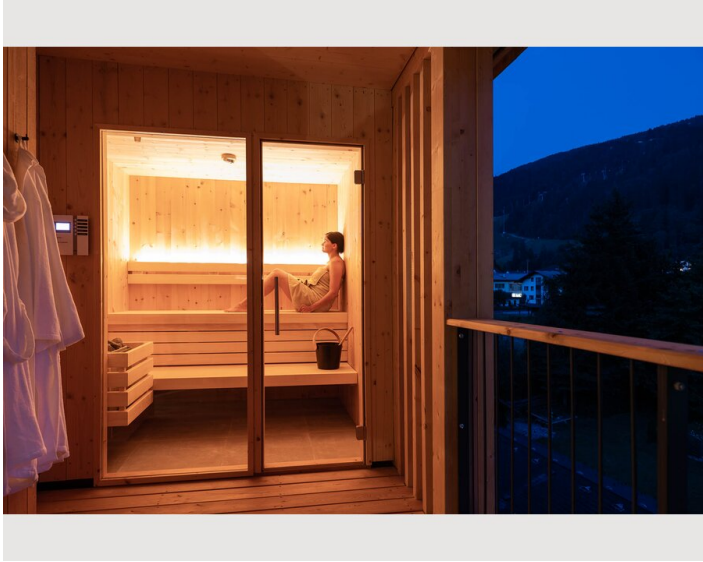
- Suitable for children
- Private entrance
- Regular cleaning at extra cost
- Smoking not allowed
- Pets on request
- Bicycle room free of charge

Picture gallery











Video


Goto Video





Infrastructure

 5 Minutes to walk

 89 km

 5 Minutes to walk

 in front of the house

 5 Minutes to walk

Originally built as the general secretariat for the 1982 FIS World Ski Championships, das bleibt is located in the heart of Schladming, just five minutes from the bottom station of the famous Planai. In every season, our house is a gate to an entire region, with all its mountains, Alpine pastures, huts, lakes and waterfalls.

Location

